

Map 1 - Location

CASE #: CW16-9

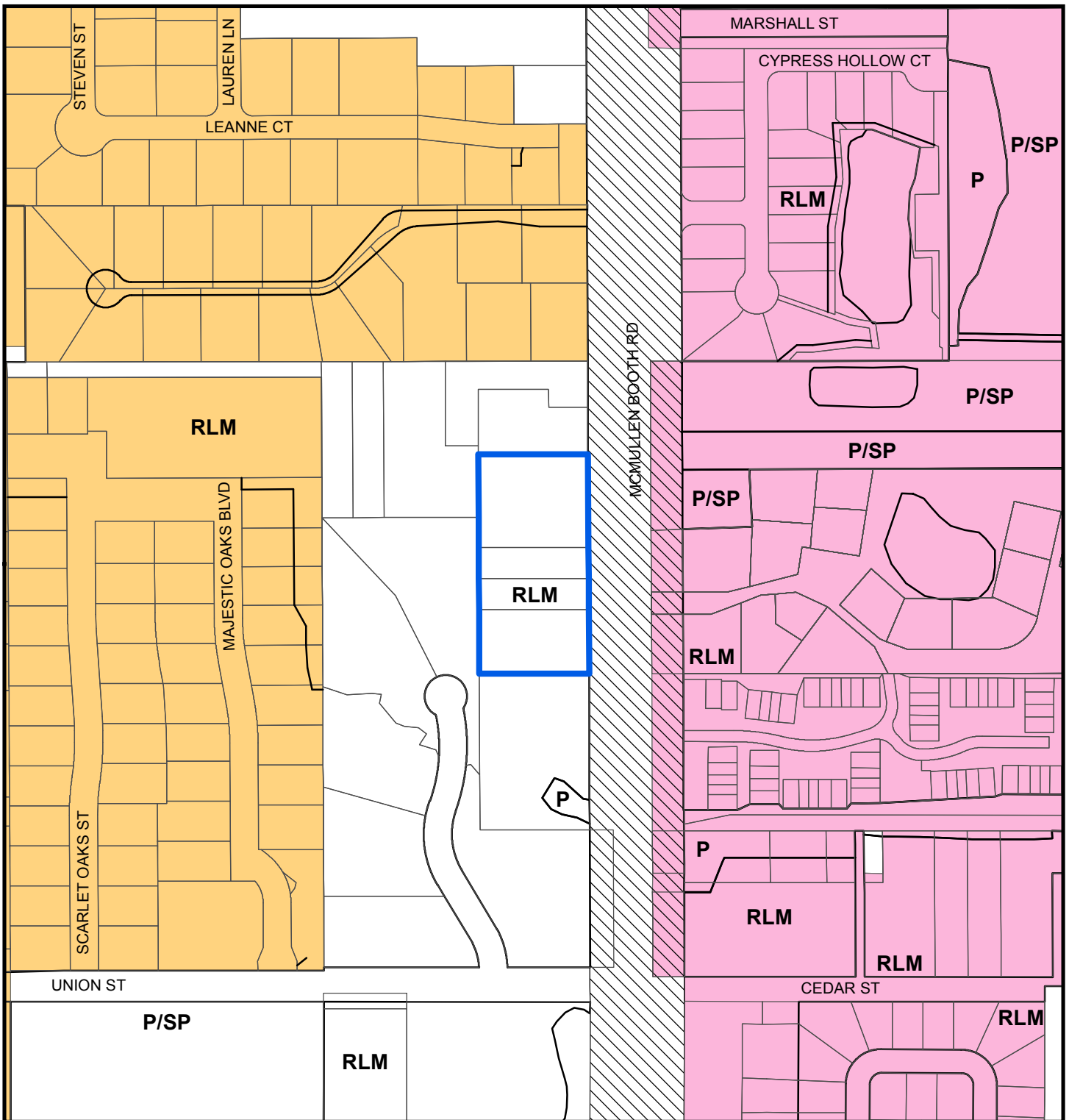
FROM: Residential Low Medium

AREA: 2.5 Acres

JURISDICTION: Pinellas County

TO: Public/Semi-Public





Map 2 - Current Countywide Plan Map & Jurisdictional Map

CASE #: CW16-9

FROM: Residential Low Medium

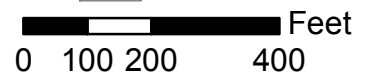
AREA: 2.5 Acres

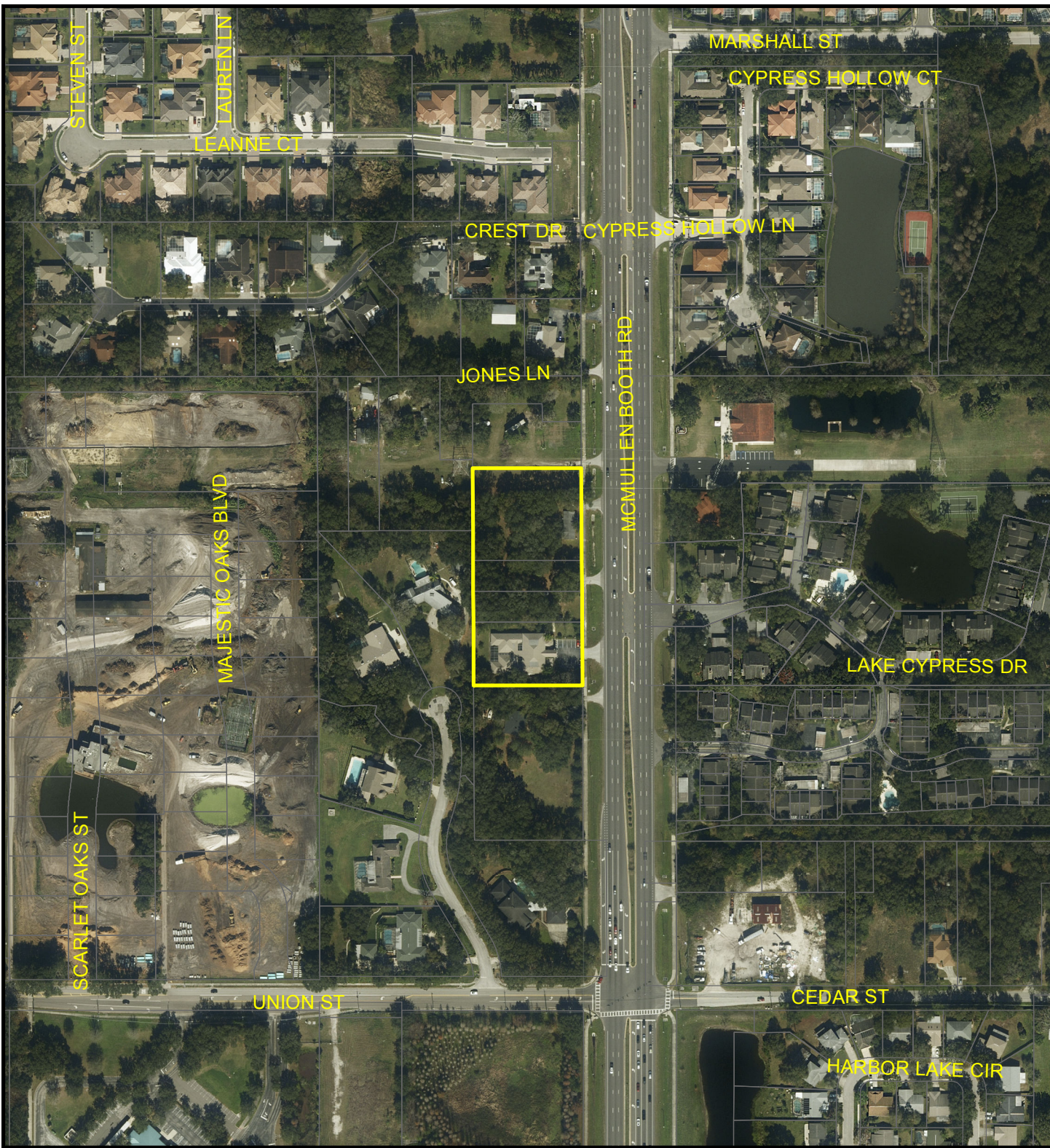
JURISDICTION: Pinellas County

TO: Public/Semi-Public

LEGEND:

- Clearwater
- Safety Harbor
- Unincorporated





Map 3 - Aerial

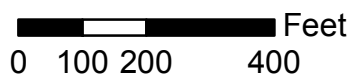
CASE #: CW16-9

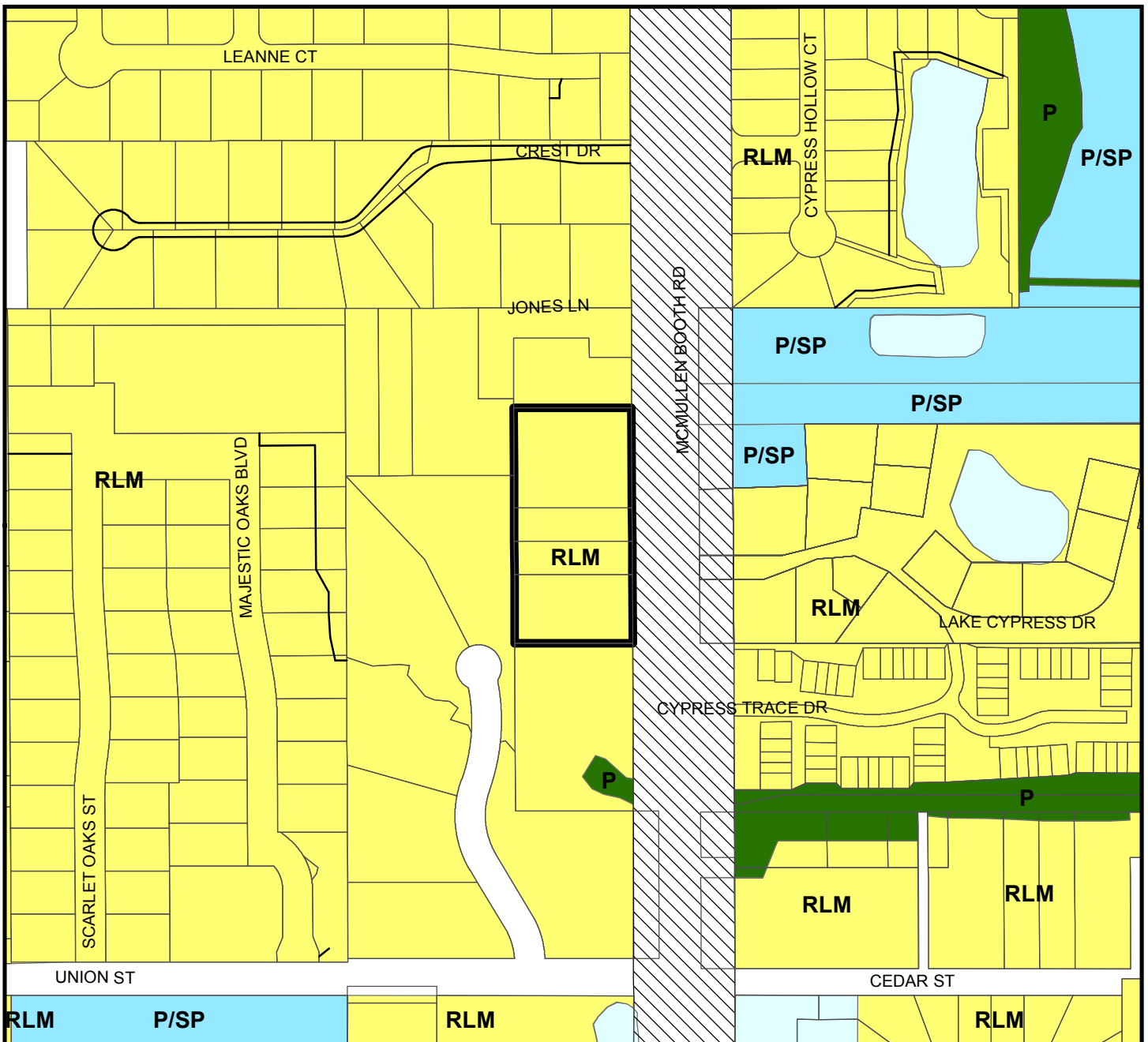
FROM: Residential Low Medium

AREA: 2.5 Acres

JURISDICTION: Pinellas County

TO: Public/Semi-Public





Plan Map Categories

- Residential Low Medium
- Public/Semi-Public
- Preservation
- Scenic/Noncommercial Corridor

Map 4 - Current Countywide Plan Map

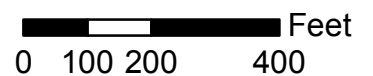
CASE #: CW16-9

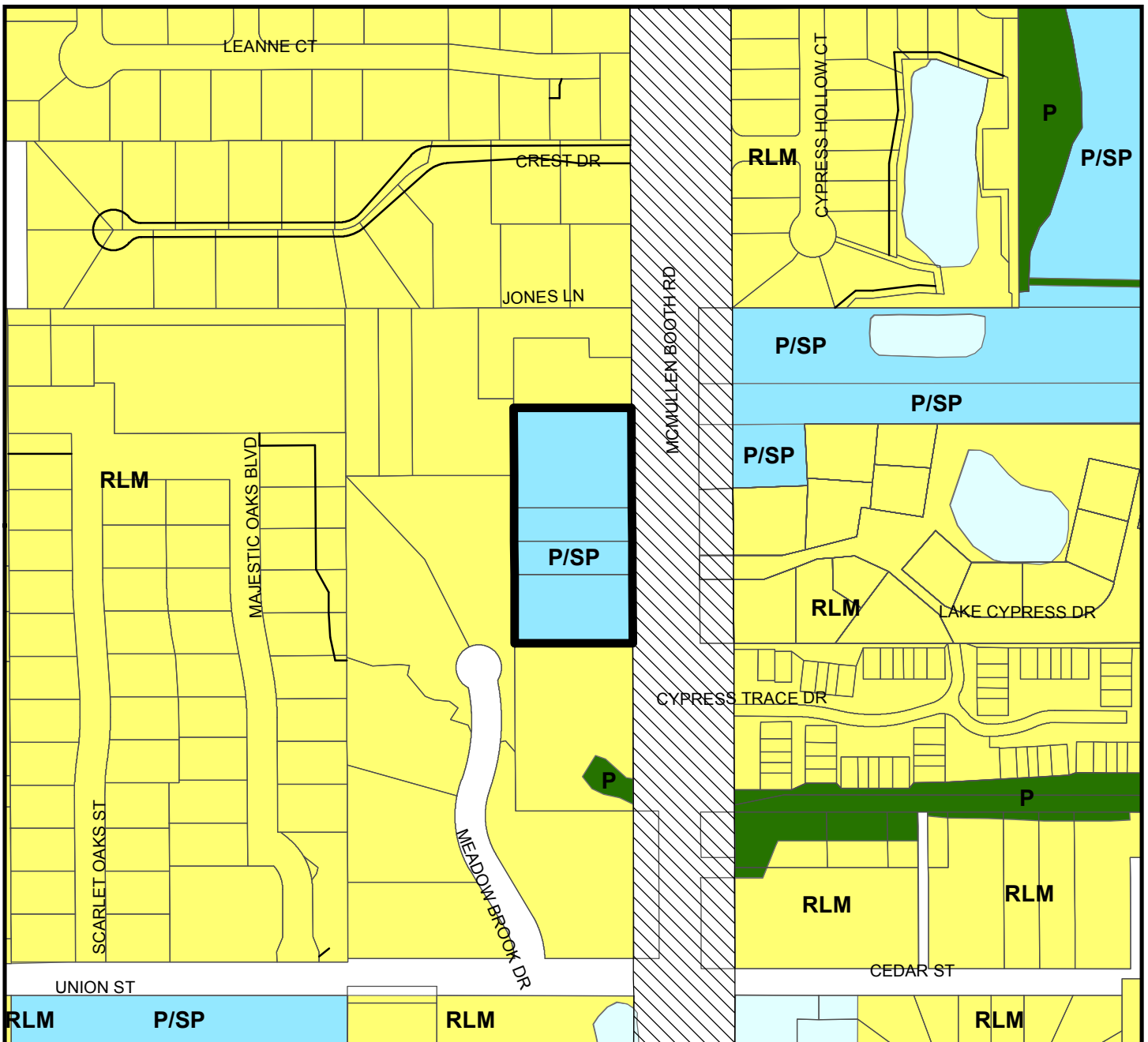
FROM: Residential Low Medium

AREA: 2.5 Acres

JURISDICTION: Pinellas County

TO: Public/Semi-Public





Plan Map Categories

- Residential Low Medium
- Public/Semi-Public
- Preservation
- Scenic/Noncommercial Corridor

Map 5 - Proposed Countywide Plan Map

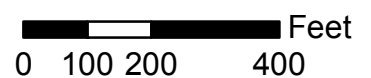
CASE #: CW16-9

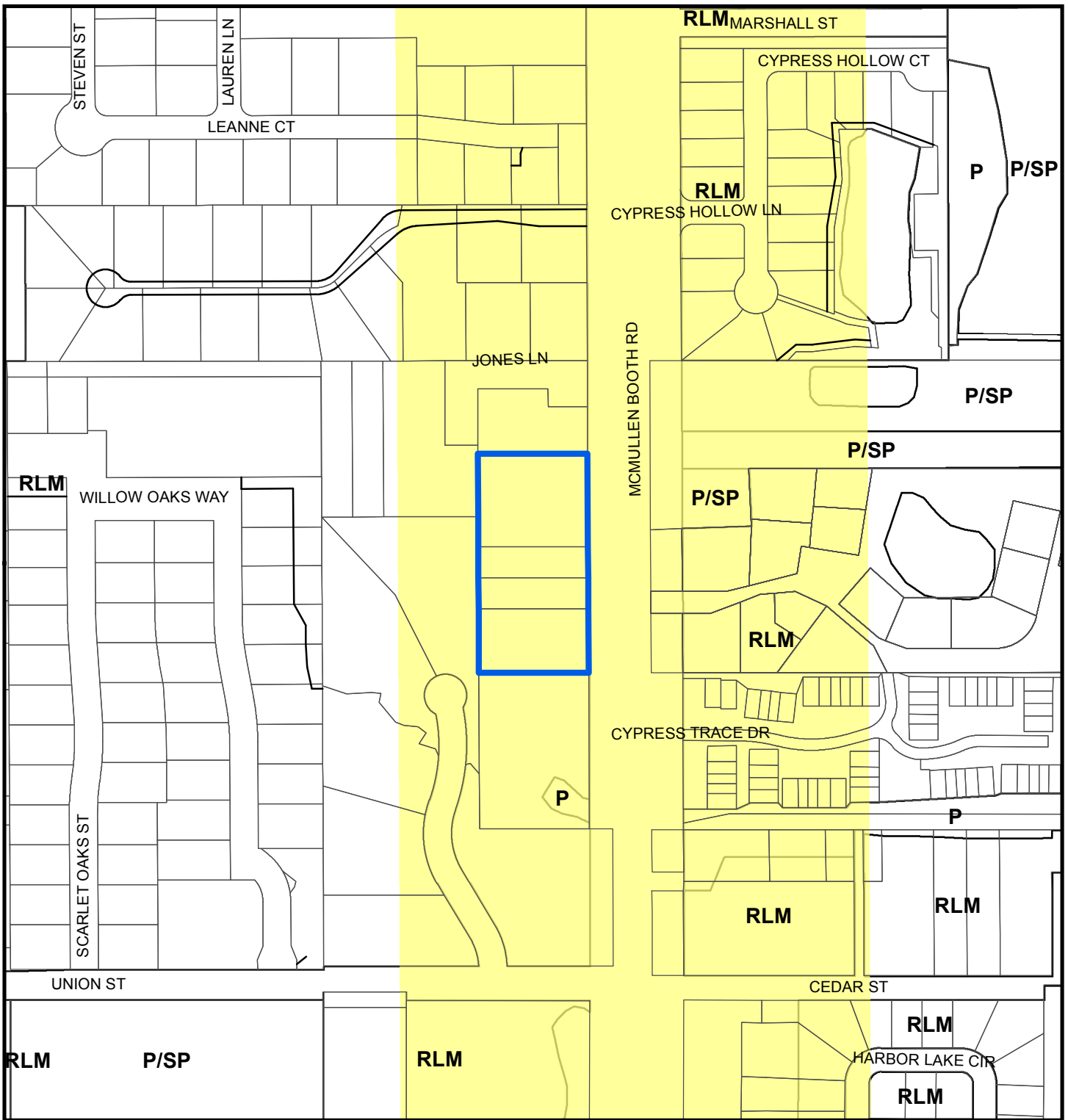
FROM: Residential Low Medium

AREA: 2.5 Acres

JURISDICTION: Pinellas County

TO: Public/Semi-Public





Map 6 - Scenic/Noncommercial Corridor (SNCC)

CASE #: CW16-9

FROM: Residential Low Medium

AREA: 2.5 Acres

JURISDICTION: Pinellas County

TO: Public/Semi-Public

SNCC TYPE:

 Residential

