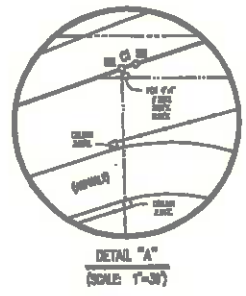
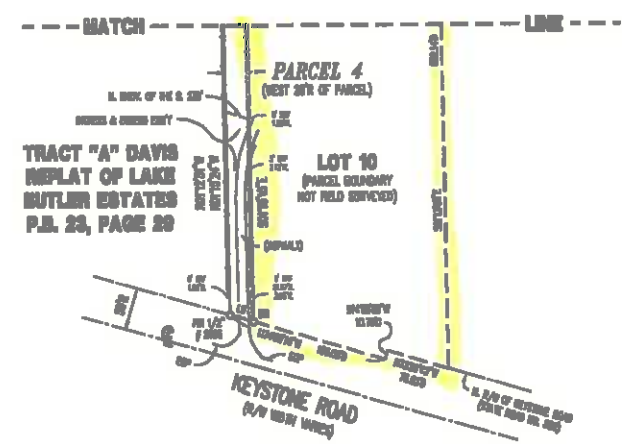
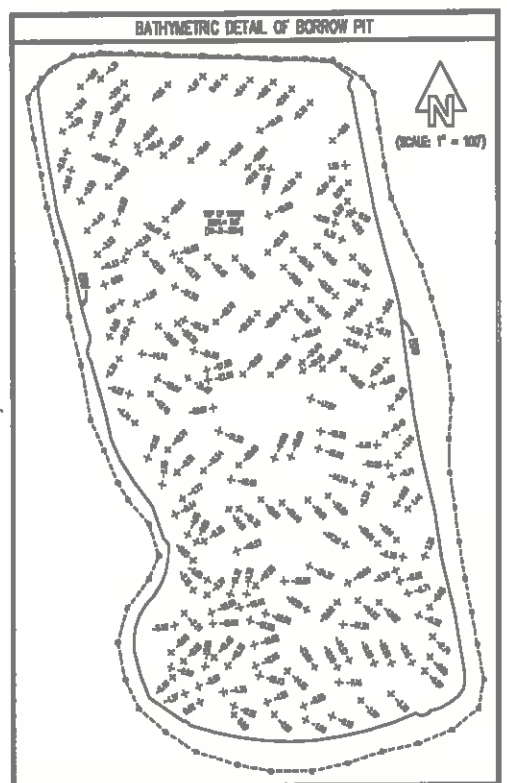
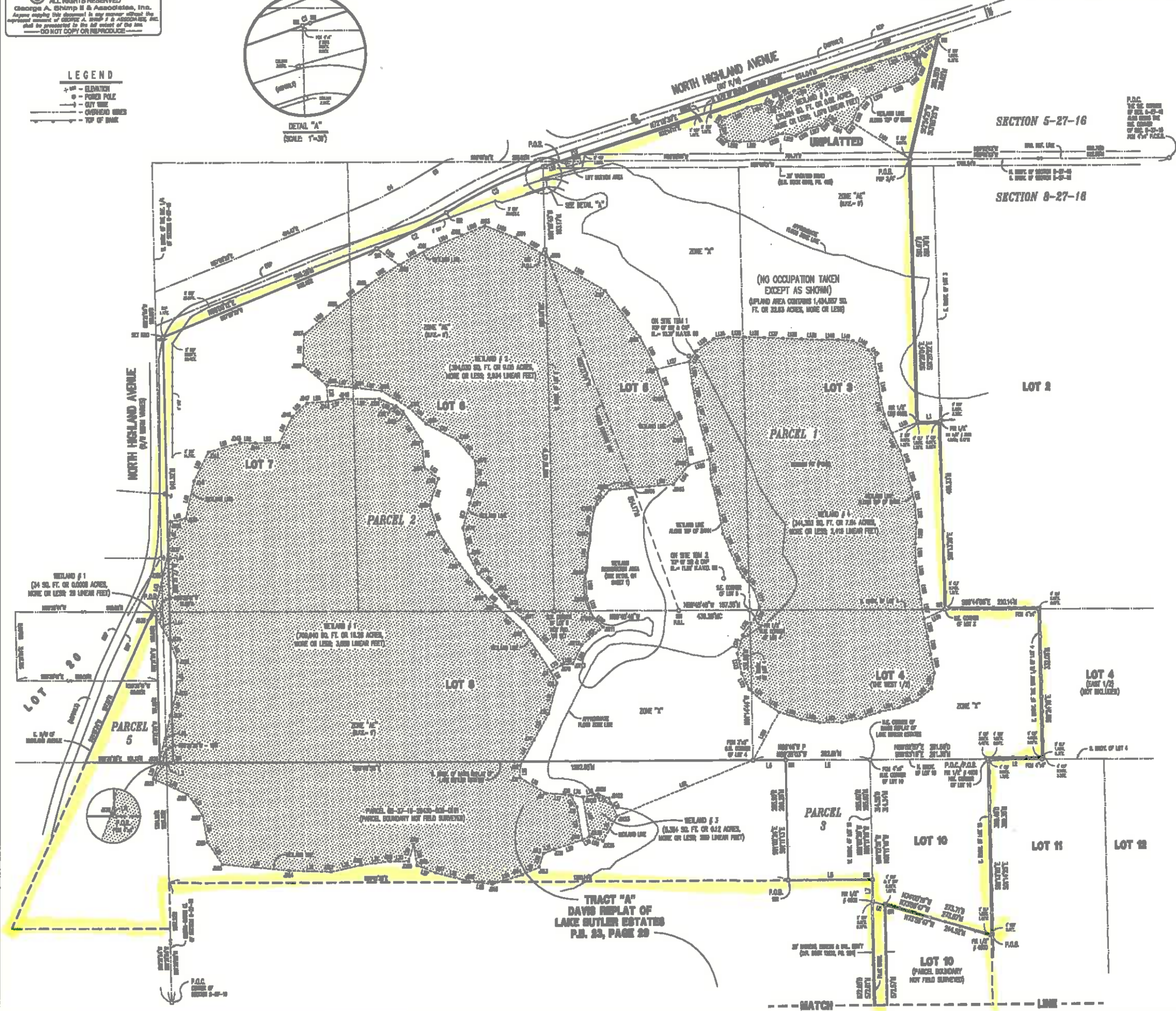
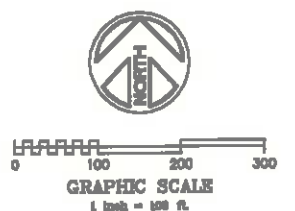


© COPYRIGHT 2016
 ALL RIGHTS RESERVED
 George A. Shimp II & Associates, Inc.
 Anyone copying this document in any manner without the
 expressed consent of George A. Shimp II & Associates, Inc.
 shall be prosecuted to the full extent of the law.
 DO NOT COPY OR REPRODUCE



LEGEND
 + - ELEVATION
 ○ - POINT PAZ
 - - - - - GUT LINE
 --- CHANGED LINES
 --- TOP OF BANK



BOUNDARY SURVEY (SHEET 2 OF 2)

DESCRIPTION: I HEREBY CERTIFY TO THE BEST OF MY KNOWLEDGE AND BELIEF THAT THE CORNER POINTS SHOWN ON THIS SURVEY WERE PLACED BY ME OR UNDER MY CLOSE PERSONAL SUPERVISION AND THAT THE MEASUREMENTS WERE MADE BY ME OR UNDER MY CLOSE PERSONAL SUPERVISION AND THAT THE CALCULATIONS WERE MADE BY ME OR UNDER MY CLOSE PERSONAL SUPERVISION AND THAT THE INSTRUMENTS WERE CALIBRATED AND FOUND TO BE ACCURATE AND THAT THE SURVEY WAS MADE IN ACCORDANCE WITH THE FLORIDA SURVEYING AND MAPPING ACT.

JOB NUMBER: 03041 DATE SURVEYED: 8-13-2016
 DRAWING FILE: 0304101 DATE DRAWING: 8-17-2016
 LARRY BROWN: 3-26-2016 X REFERENCE: 1070

GEORGE A. SHIMP II AND ASSOCIATES, INCORPORATED
 LAND SURVEYORS LAND PLANNERS
 3001 BAYVIEW AVENUE, SUITE 200
 ST. PETERSBURG, FLORIDA 33706
 PHONE: (813) 762-2000 FAX: (813) 762-2001

U.S. 10754