

Sheriff

Pinellas County Sheriff: Bob Gualtieri, Sheriff
OMB Budget Analyst: Jim Abernathy

Department Purpose

Pursuant to Florida Statutes, the Sheriff is the chief law enforcement officer within the County. The Pinellas County Sheriff's Office (PCSO) is required to provide basic services to all citizens residing within Pinellas County. These include law enforcement, jail operations, and court security. The Sheriff also tracks sexual predators/offenders, conducts flight operations, serves civil process, manages pre-trial services, administers the misdemeanor probation program, and conducts joint operations with state and federal law enforcement agencies. The Sheriff serves as the primary law enforcement officer to the unincorporated areas of Pinellas County and to 13 of the county's 24 municipalities pursuant to contract. Additionally, the Sheriff provides a variety of law enforcement services to the other 11 municipalities and contracts with many of these cities for specialized services.

Budget Summary

All Funds

	FY23 Actual	FY24 Actual	FY25 Actual	FY26 Budget	FY27 Budget
Constitutional Officers Transfers	\$375,511,451	\$421,048,235	\$463,095,728	\$478,757,400	\$504,965,530
Reserves	\$0	\$0	\$0	\$224,560	\$294,600
Grand Total	\$375,511,451	\$421,048,235	\$463,095,728	\$478,981,960	\$505,260,130

	FY23 Actual	FY24 Actual	FY25 Actual	FY26 Budget	FY27 Budget
FTE	2,444.0	2,468.0	2,485.0	2,486.0	2,513.0

0001- General Fund

	FY23 Actual	FY24 Actual	FY25 Actual	FY26 Budget	FY27 Budget
Constitutional Officers Transfers	\$375,501,451	\$421,038,235	\$463,085,728	\$478,747,400	\$504,955,530
Grand Total	\$375,501,451	\$421,038,235	\$463,085,728	\$478,747,400	\$504,955,530

	FY23 Actual	FY24 Actual	FY25 Actual	FY26 Budget	FY27 Budget
FTE	2,444.0	2,468.0	2,485.0	2,486.0	2,513.0

1016-School Crossng Guard Trst

	FY23 Actual	FY24 Actual	FY25 Actual	FY26 Budget	FY27 Budget
Constitutional Officers Transfers	\$10,000	\$10,000	\$10,000	\$10,000	\$10,000
Reserves	\$0	\$0	\$0	\$224,560	\$294,600

	FY23 Actual	FY24 Actual	FY25 Actual	FY26 Budget	FY27 Budget
Grand Total	\$10,000	\$10,000	\$10,000	\$234,560	\$304,600

	FY23 Actual	FY24 Actual	FY25 Actual	FY26 Budget	FY27 Budget
FTE	0.0	0.0	0.0	0.0	0.0

Budget Drivers

The Sheriff's Office's FY27 budget increases \$26.208M (5.5%) from the Adopted Budget to \$504.956M.

- Law Enforcement Operations increase \$15.756M (6.1%) to \$273.531M.
- Detention and Corrections Operations increase \$9.054M (5.1%) to \$185.589M.
- Judicial Operations increase \$1.398M (3.3%) to \$43.585M.
- FY27 includes \$2.250M for anticipated grants and transfers from the Law Enforcement Trust Funds, done each year to allow for quick distribution of funds when requested by the Sheriff's Office.
- The FY27 Budget Request includes a 3.0% increase for both sworn and non-sworn personnel.
- Including the FY26 amendment of \$1.370M for medical staff in Detention, budget increases \$24.838M (5.2%) in FY26.

Staffing increases by 27.0 FTE

- Law Enforcement Operations decrease 11.0 to 1,171.0 FTE.
- Detention and Corrections Operations increase 16.0 FTE to 1,057.0 FTE.
- Judicial Operations increase 22.0 FTE to 285.0 FTE.

The increase in FTE is due to the conversion of the Naphcare medical services contract to PCSO personnel at the Pinellas County Jail.

Personnel Services increase \$21.620M (5.5%) to \$417.094M.

- Salaries increase \$12.827M (5.5%) to \$246.943M and include a 3.0% salary increase for both sworn and non-sworn positions.
- FRS increases \$979,000 (1.4%) to \$68.838M.
- Health benefits increase \$6.833M (9.3%) to \$80.065M.

Operating Expenses increase \$2.615M (4.0%) to \$67.208M, including the following changes:

- \$342,000 increase in Fleet Operations for repair and maintenance services;
- \$202,000 decrease in Detention and Corrections contracts; and
- \$802,000 increase in the Medical Division's professional services.

Capital Outlay increases \$1.973M (12.0%) to \$18.403M.

- FY27 includes 189 vehicles for replacement, including 109 Tahoes.

Revenue from municipal law enforcement and other contracts, fees, and charges increases \$139,315 (0.3%) to \$54.640M.

- Revenue from municipal contracts increases \$1.408M (6.0%) to \$24.867M.
- Revenue from the U.S. Marshal/ICE/BOP decreases \$2.107M (11.1%) to \$16.863M.

FY27 Decision Packages

The Sheriff's Office did not submit decision packages.

Budget Summary by Program and Fund

Sheriff: Detention and Corrections

Oversees the care and custody of about 3,000 inmates on a daily basis as they await trial or as they serve their county sentences in the Pinellas County Jail that includes the Medical Division. The Department is committed to providing a safe and secure environment for inmates and staff, implementing jail programs to help inmates with their reorientation to society, and enhancing professionalism of the staff through training and educational programs.

	FY23 Actual	FY24 Actual	FY25 Actual	FY26 Budget	FY27 Budget
General Fund	\$141,779,016	\$159,831,380	\$171,777,510	\$176,796,420	\$185,589,320
Grand Total	\$141,779,016	\$159,831,380	\$171,777,510	\$176,796,420	\$185,589,320

	FY23 Actual	FY24 Actual	FY25 Actual	FY26 Budget	FY27 Budget
FTE	1,043.0	1,038.0	1,041.0	1,041.0	1,057.0

Sheriff: Judicial Operations

Judicial Operations provides security and support to the Circuit and County court system. Sheriff's deputies are at the front doors and at the judges' sides at five courthouses in Pinellas County. They ensure the security of hundreds of courthouse employees and thousands of citizens who come to the courthouses every day to conduct business, appear for proceedings or serve on a jury. Florida State Statutes also require the Sheriff's Office to serve all enforceable civil processes (writs, warrants, subpoenas, and other legal documents). Judicial Operations is also responsible for the operation of the misdemeanor/probation program which handles over 2,500 cases at any given time.

	FY23 Actual	FY24 Actual	FY25 Actual	FY26 Budget	FY27 Budget
General Fund	\$30,582,824	\$34,181,512	\$37,875,493	\$39,767,940	\$43,584,800
Grand Total	\$30,582,824	\$34,181,512	\$37,875,493	\$39,767,940	\$43,584,800

	FY23 Actual	FY24 Actual	FY25 Actual	FY26 Budget	FY27 Budget
FTE	252.0	255.0	252.0	263.0	285.0
Grand Total	252.0	255.0	252.0	263.0	285.0

Sheriff: Law Enforcement

Full primary law enforcement services in the unincorporated area of the County as well as 13 cities. The cities currently under contract with the Sheriff's office to provide full services are Belleair Beach, Belleair Bluffs, Belleair Shore, Dunedin, Indian Rocks Beach, Madeira Beach, North Redington Beach, Redington Beach, South Pasadena, Oldsmar, Safety Harbor, Seminole, and St. Pete Beach. The Sheriff's Office also has contractual agreements with other cities in the county for specific services, which includes a wide range of countywide services, including SWAT, canine, the Sexual Predator and Offender Tracking (SPOT) unit, and the airborne Flight Unit. This also includes supporting services, such as fleet maintenance, training, records, and evidence.

	FY23 Actual	FY24 Actual	FY25 Actual	FY26 Budget	FY27 Budget
General Fund	\$203,139,610	\$227,025,343	\$253,432,724	\$262,183,040	\$275,781,410
Grand Total	\$203,139,610	\$227,025,343	\$253,432,724	\$262,183,040	\$275,781,410

	FY23 Actual	FY24 Actual	FY25 Actual	FY26 Budget	FY27 Budget
FTE	1,149.0	1,175.0	1,192.0	1,182.0	1,171.0

School Crossing Guard Fund

Accounts for collection and distribution of a surcharge on parking fines assessed under Pinellas County Code Section 122-32(6) for funding training programs for school crossing guards. This program is administered by the Sheriff.

	FY23 Actual	FY24 Actual	FY25 Actual	FY26 Budget	FY27 Budget
School Crossng Guard Trst	\$10,000	\$10,000	\$10,000	\$10,000	\$10,000
Grand Total	\$10,000	\$10,000	\$10,000	\$10,000	\$10,000

	FY23 Actual	FY24 Actual	FY25 Actual	FY26 Budget	FY27 Budget
FTE	0.0	0.0	0.0	0.0	0.0

Reserves

Oversees the management and allocation of the County's financial reserves.

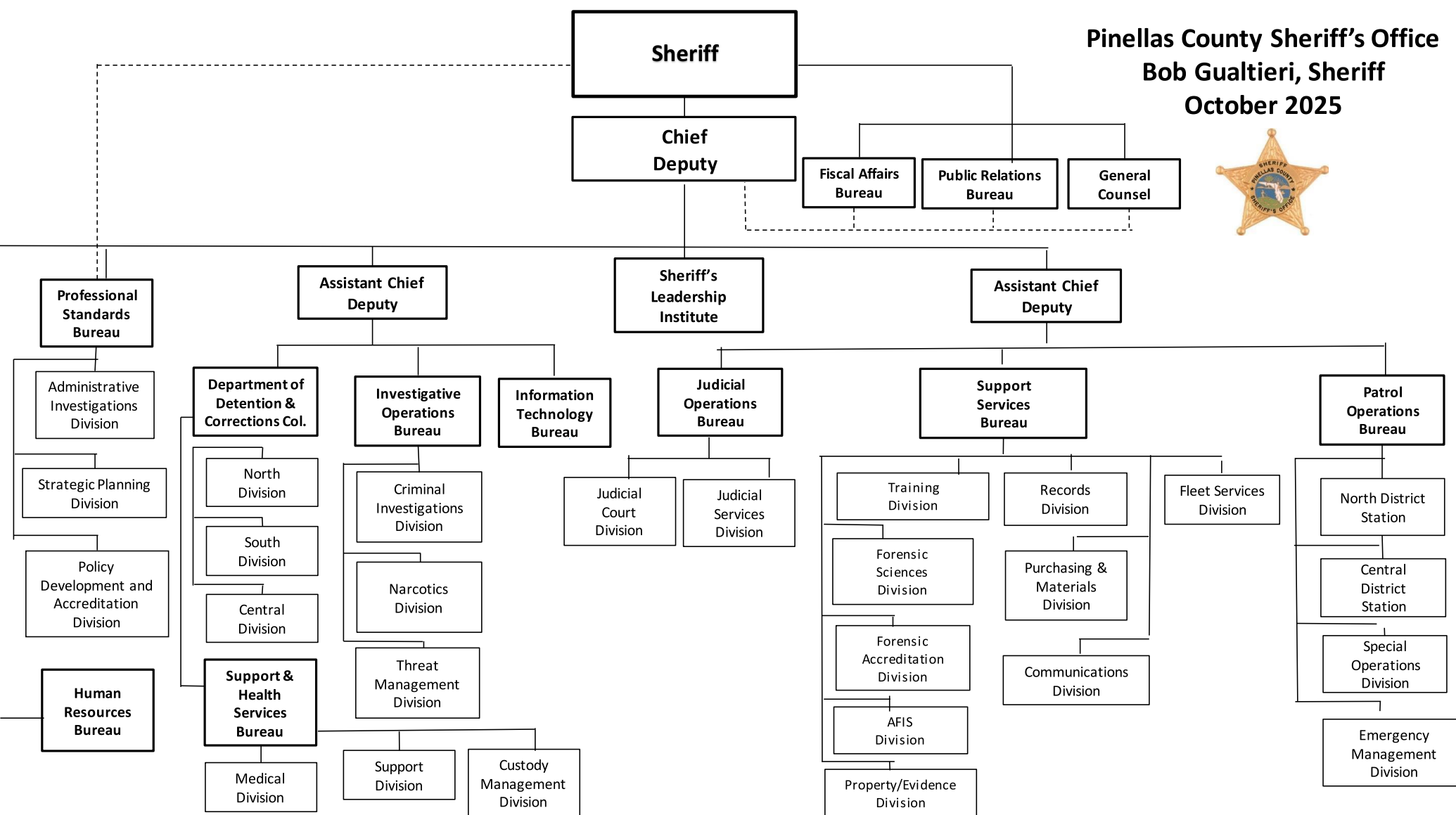
	FY23 Actual	FY24 Actual	FY25 Actual	FY26 Budget	FY27 Budget
School Crossng Guard Trst	\$0	\$0	\$0	\$224,560	\$294,600
Grand Total	\$0	\$0	\$0	\$224,560	\$294,600

	FY23 Actual	FY24 Actual	FY25 Actual	FY26 Budget	FY27 Budget
FTE	0.0	0.0	0.0	0.0	0.0

Attachments:

1. Organizational Chart (pg. 5)
2. Budget Report - General Fund (pg. 6)
3. Budget Report - School Crossing Guard Fund (pg. 7)

Pinellas County Sheriff's Office
Bob Gaultieri, Sheriff
October 2025



General Fund

Expenditures	FY23 Actual	FY24 Actual	FY25 Actual	FY26 Budget	FY27 Request	Budget to Budget Change	Budget to Budget % Change
Trans To Shf-Personal Services	308,695,518	338,574,190	366,182,839	396,599,080	418,218,980	21,619,900	5.5%
Trans To Shf-Operating	43,867,705	52,761,185	62,222,419	65,717,510	68,333,210	2,615,700	4.0%
Trans To Shf-Capital	18,626,328	27,578,010	34,680,470	16,430,810	18,403,340	1,972,530	12.0%
Trans To Shf-Debt Service	4,311,900	2,124,850	0	0	0	0	-
Total Expenditures	375,501,451	421,038,235	463,085,728	478,747,400	504,955,530	26,208,130	5.5%

School Crossing Guard Trust Fund

Expenditures	FY23 Actual	FY24 Actual	FY25 Actual	FY26 Budget	FY27 Request	Budget to Budget Change	Budget to Budget % Change
Trans To Shf-Operating	10,000	10,000	10,000	10,000	10,000	0	0.0%
Reserve-Contingencies	0	0	0	22,980	29,850	6,870	29.9%
Reserve-Fund Balance	0	0	0	46,440	60,310	13,870	29.9%
Reserve-Future Years	0	0	0	155,140	204,440	49,300	31.8%
Total Requirements	10,000	10,000	10,000	234,560	304,600	70,040	29.9%