

**Map 1 - Location**

**CASE #:** CW19-03

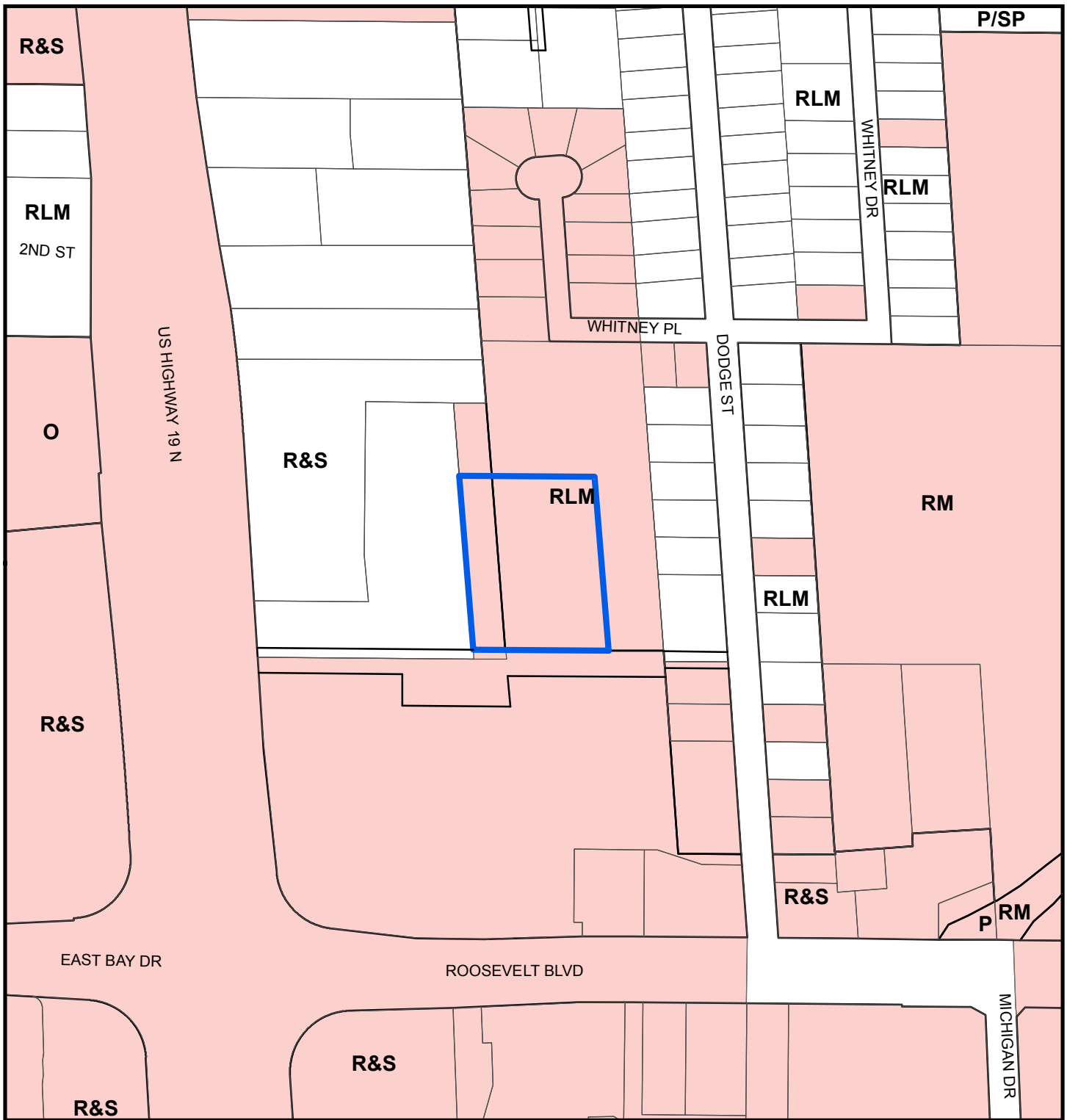
**FROM:** Residential Low Medium and Retail and Services

**AREA:** 2.45 Acres

**JURISDICTION:** Largo

**TO:** Retail and Services





### Map 2 - Current Countywide Plan Map & Jurisdictional Map

**CASE #:** CW19-03

**FROM:** Residential Low Medium and Retail and Services

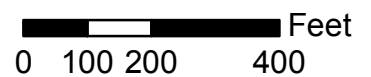
**AREA:** 2.45 Acres

**JURISDICTION:** Largo

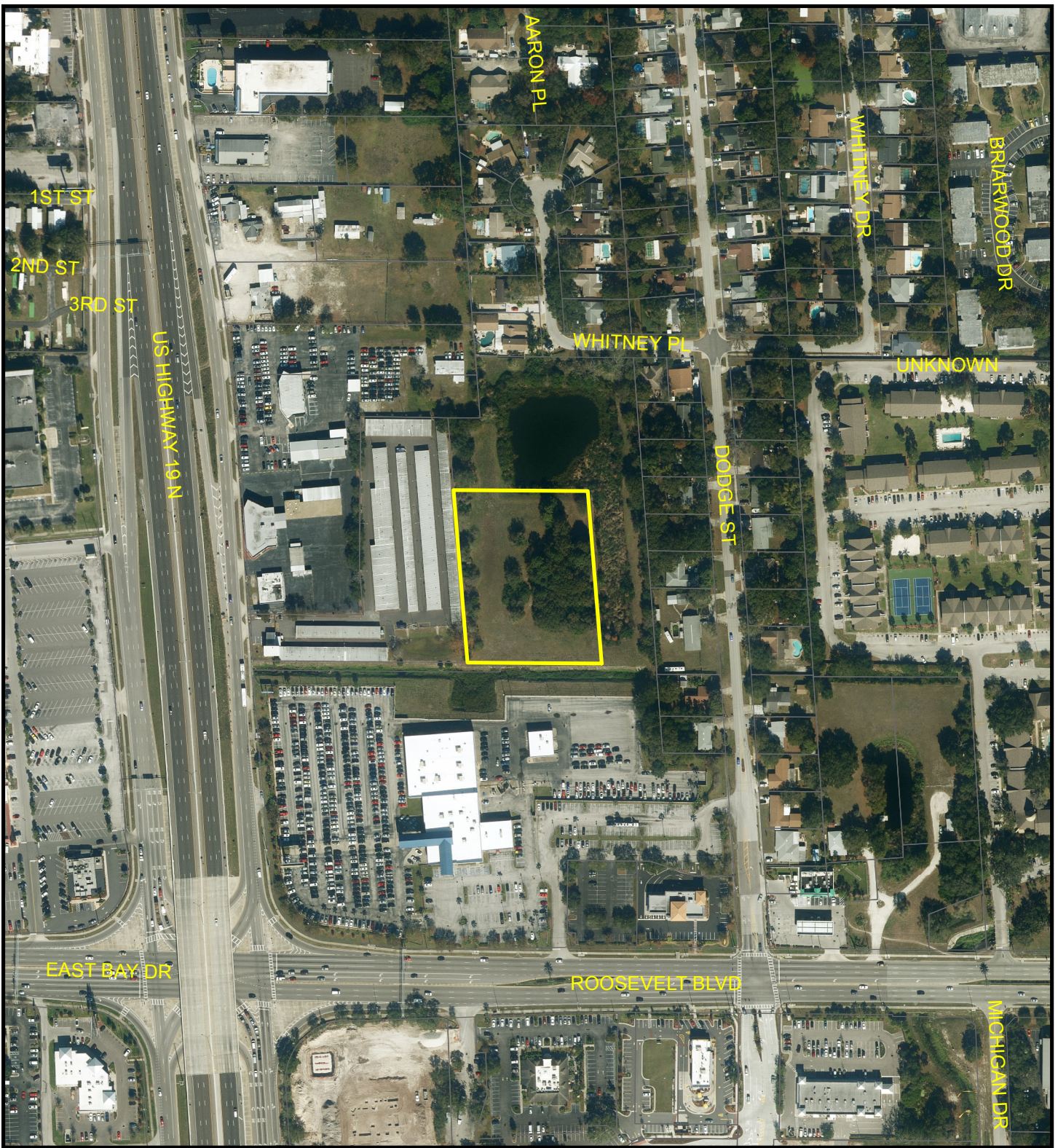
**TO:** Retail and Services

**LEGEND:**

- Largo
- Unincorporated







### Map 3 - Aerial

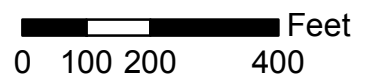
**CASE #:** CW19-03

**FROM:** Residential Low Medium and  
Retail and Services

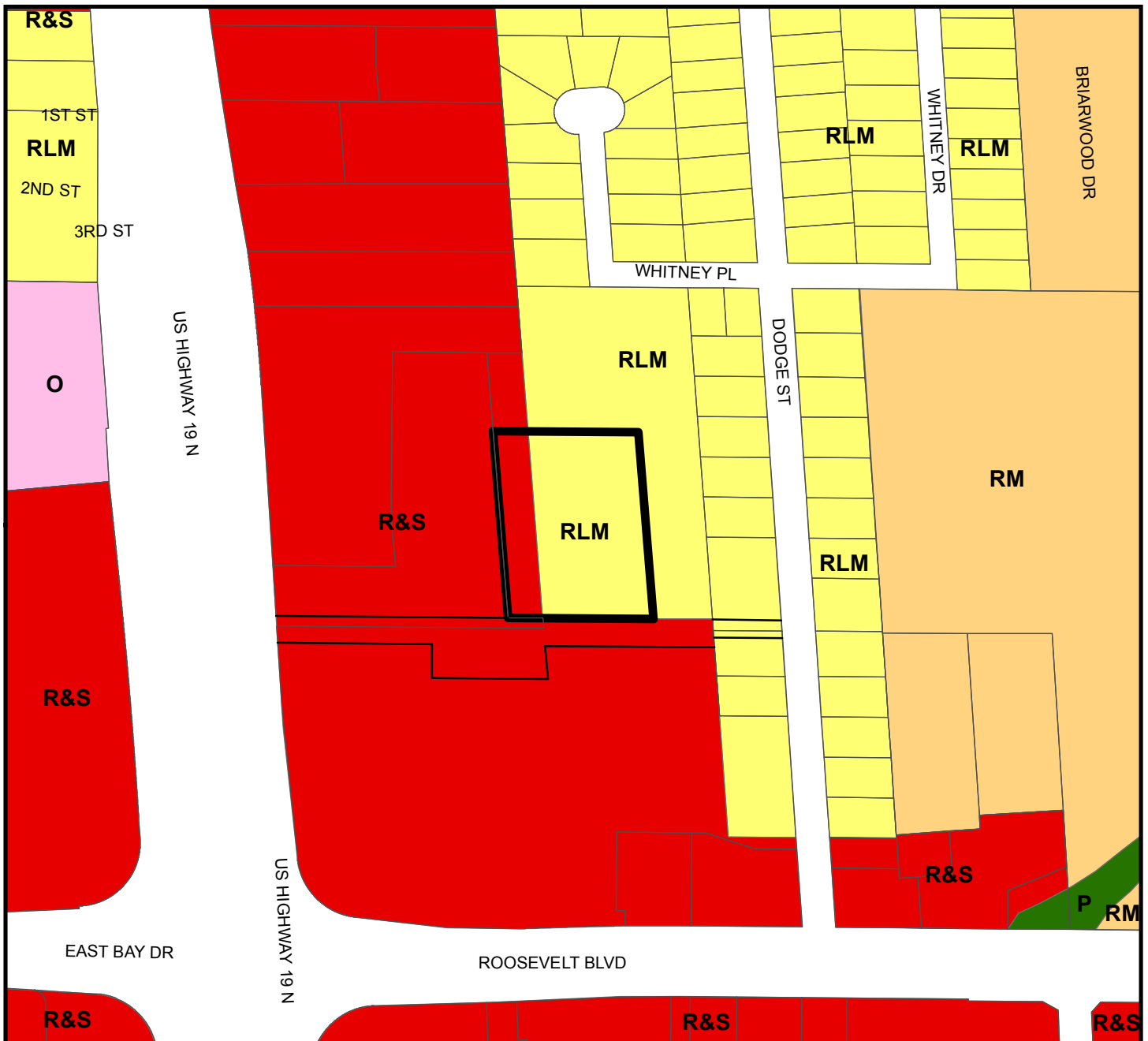
**AREA:** 2.45 Acres

**JURISDICTION:** Largo

**TO:** Retail and Services







### Countywide Plan Map Categories

- Residential Low Medium
- Residential Medium
- Office
- Retail & Services
- Preservation

### Map 4 - Current Countywide Plan Map

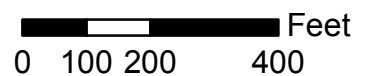
**CASE #:** CW19-03

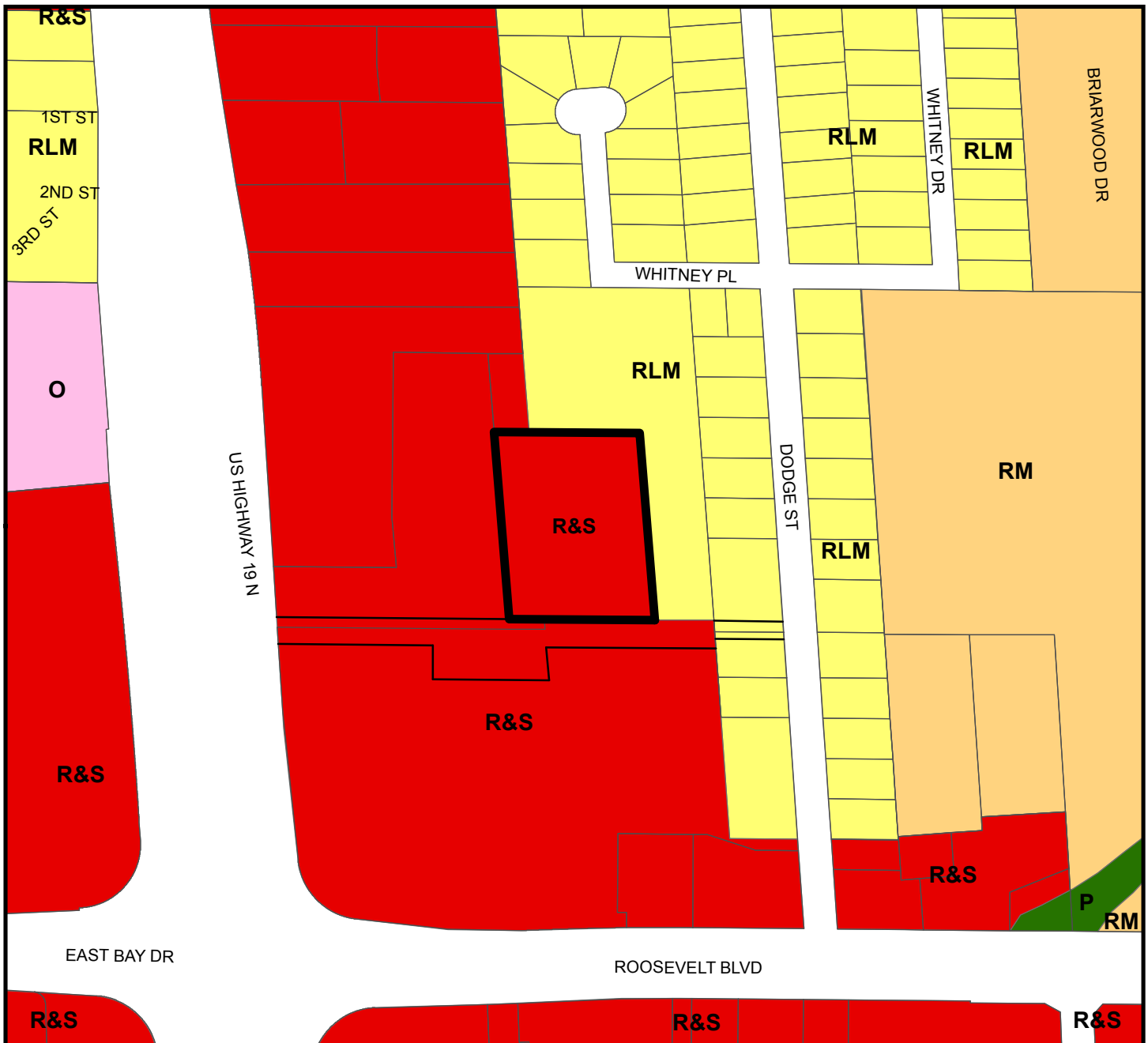
**FROM:** Residential Low Medium and  
Retail and Services

**AREA:** 2.45 Acres

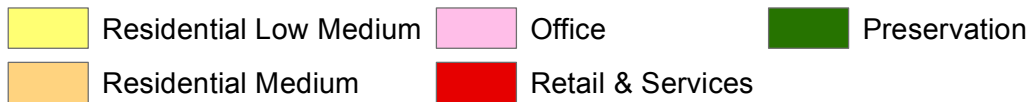
**JURISDICTION:** Largo

**TO:** Retail and Services





### Countywide Plan Map Categories



### Map 5 - Proposed Countywide Plan Map

**CASE #:** CW19-03

**FROM:** Residential Low Medium and Retail and Services

**AREA:** 2.45 Acres

**JURISDICTION:** Largo

**TO:** Retail and Services

