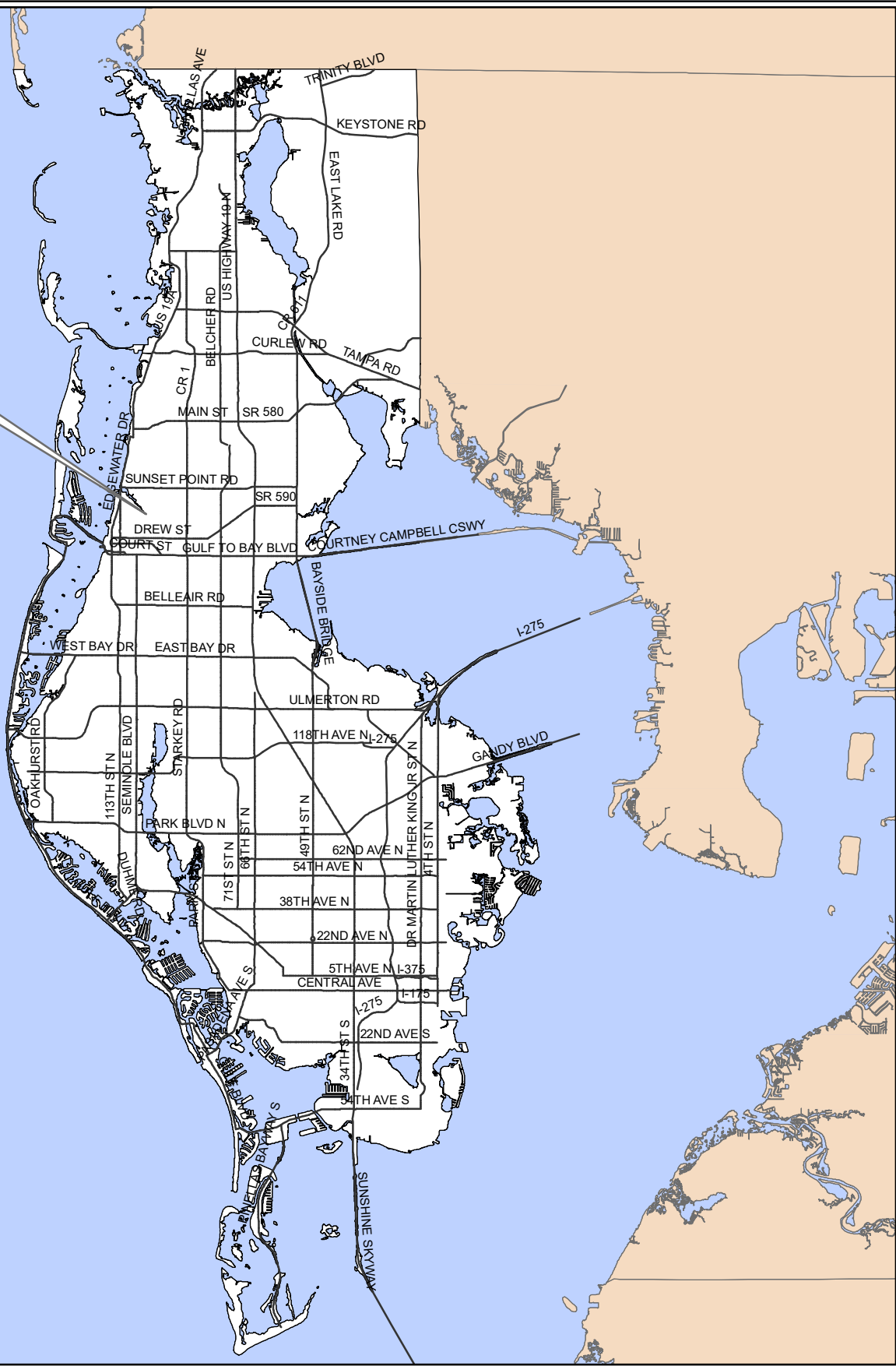


LU-30-12-18



Surrounding Counties

LU-30-12-18
Location Map

Land Use

From: RL, Residential Low and P, Preservation

To: CG, Commercial General and P, Preservation



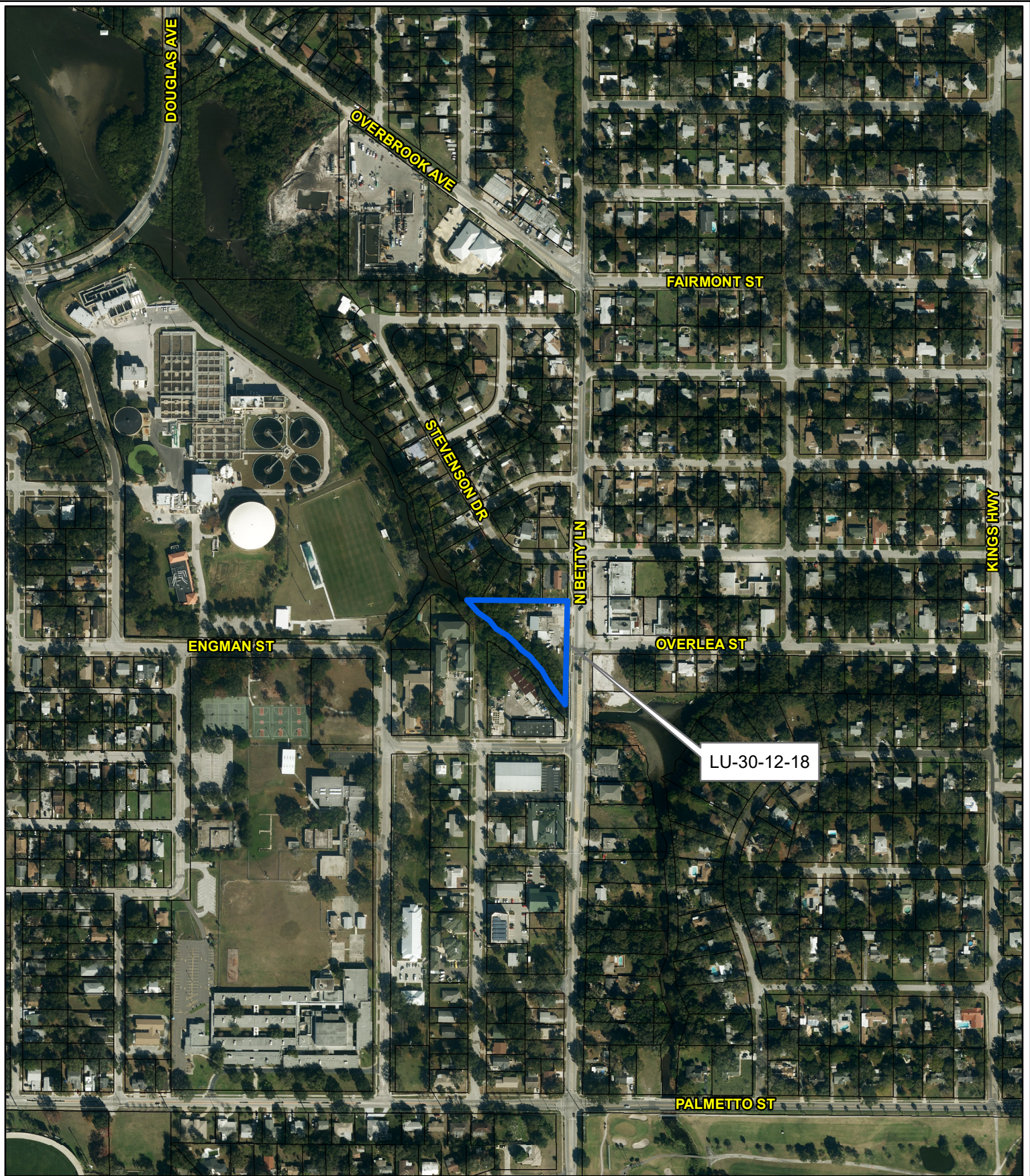
10/29/15/00000/120/0400

Prepared by: Pinellas County Planning Department



Date: 10/30/2018

1 inch = 4.5 miles



LU-30-12-18
Aerial Map

Land Use

From: RL, Residential Low and
P, Preservation
To: CG, Commercial General and
P, Preservation



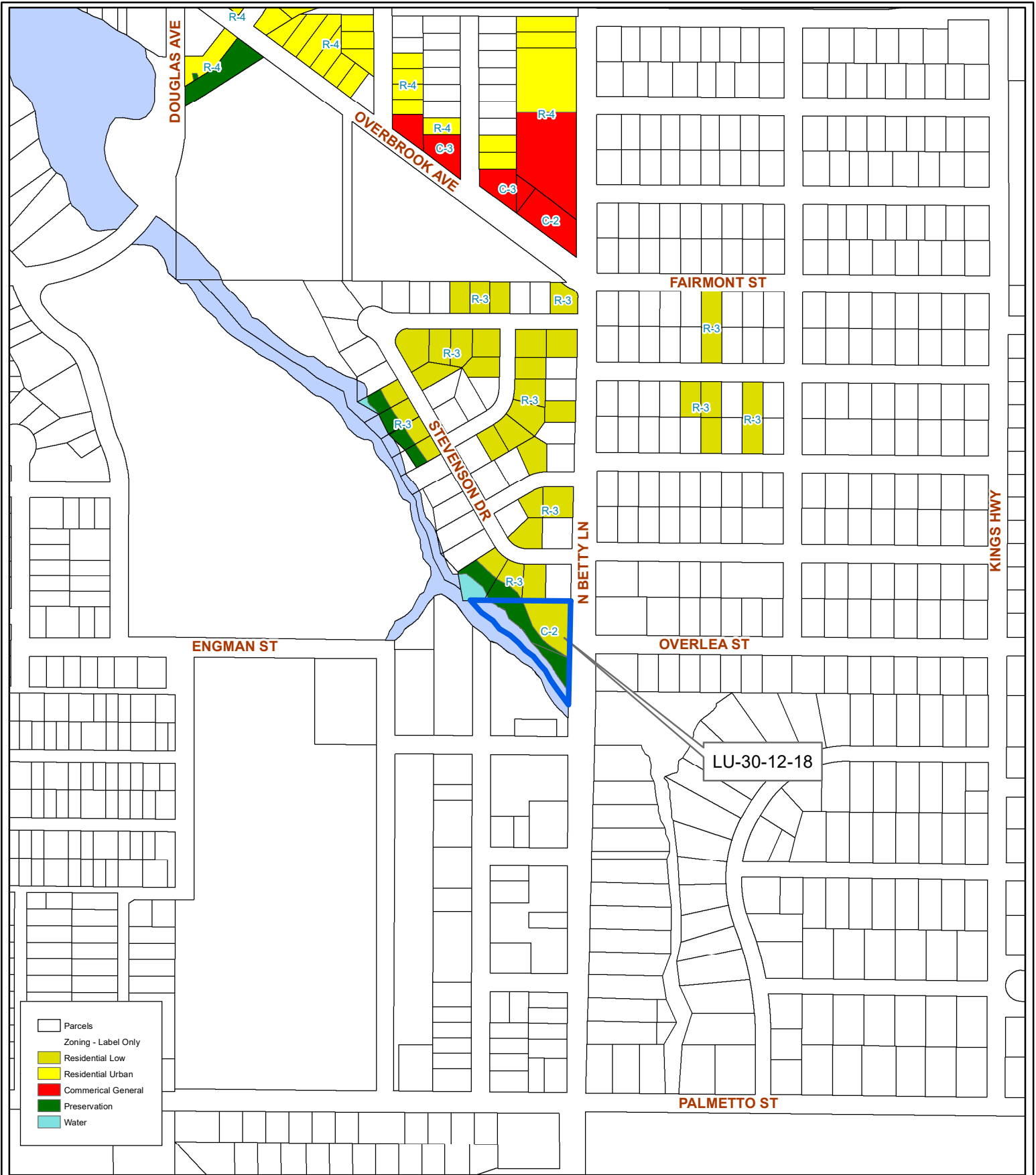
10/29/15/00000/120/0400

Prepared by: Pinellas County Planning Department



Date: 10/30/2018

1 inch = 0.08 miles



- Parcels
- Zoning - Label Only
- Residential Low
- Residential Urban
- Commercial General
- Preservation
- Water

LU-30-12-18
Current Land Use & Zoning

Land Use

From: RL, Residential Low and P, Preservation
To: CG, Commercial General and P, Preservation

10/29/15/00000/120/0400

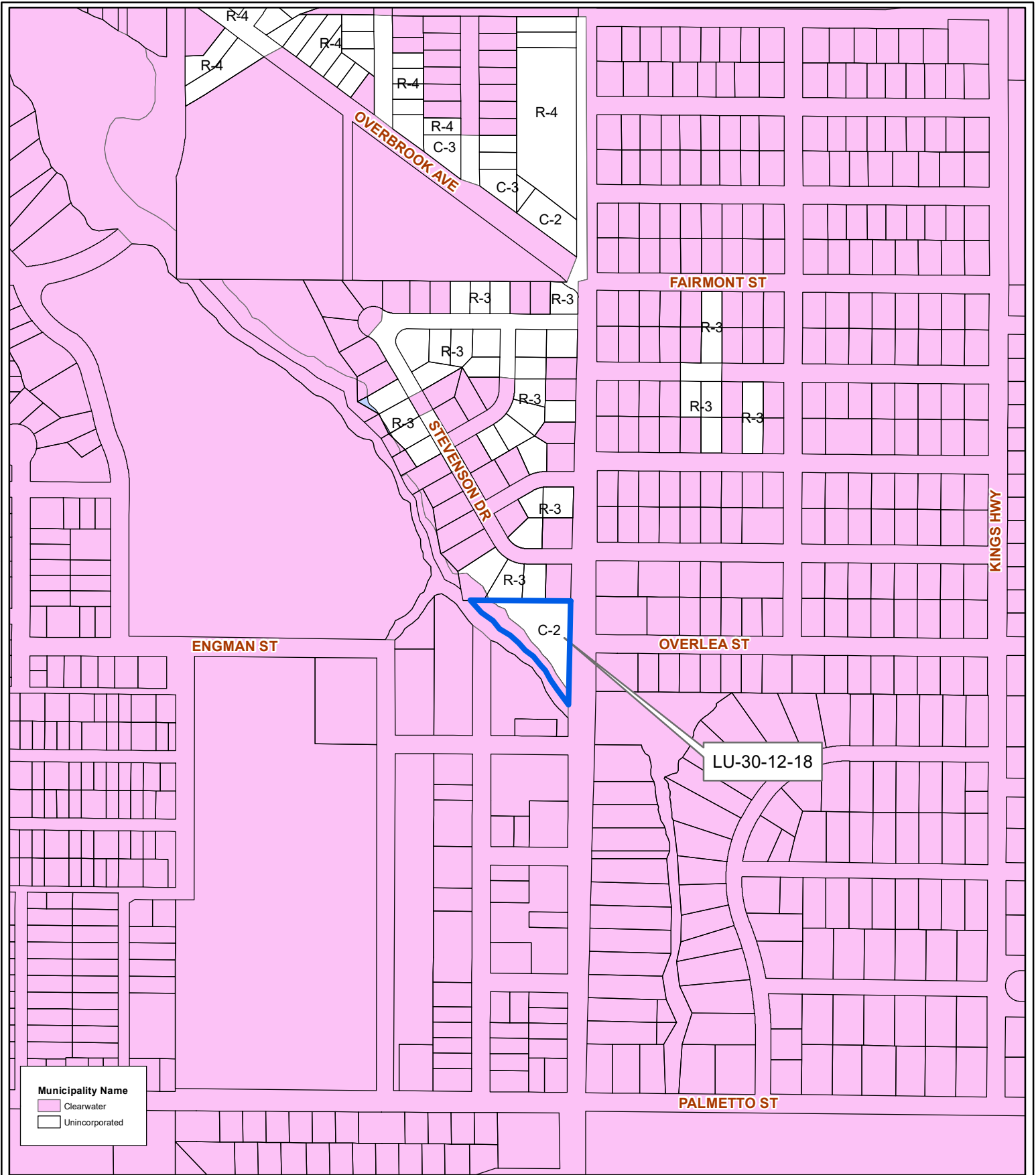
Prepared by: Pinellas County Planning Department



Date: 10/30/2018



1 inch = 0.08 miles



LU-30-12-18

Municipal Map

Land Use

From: RL, Residential Low and
P, Preservation

To: CG, Commercial General and
P, Preservation

10/29/15/00000/120/0400

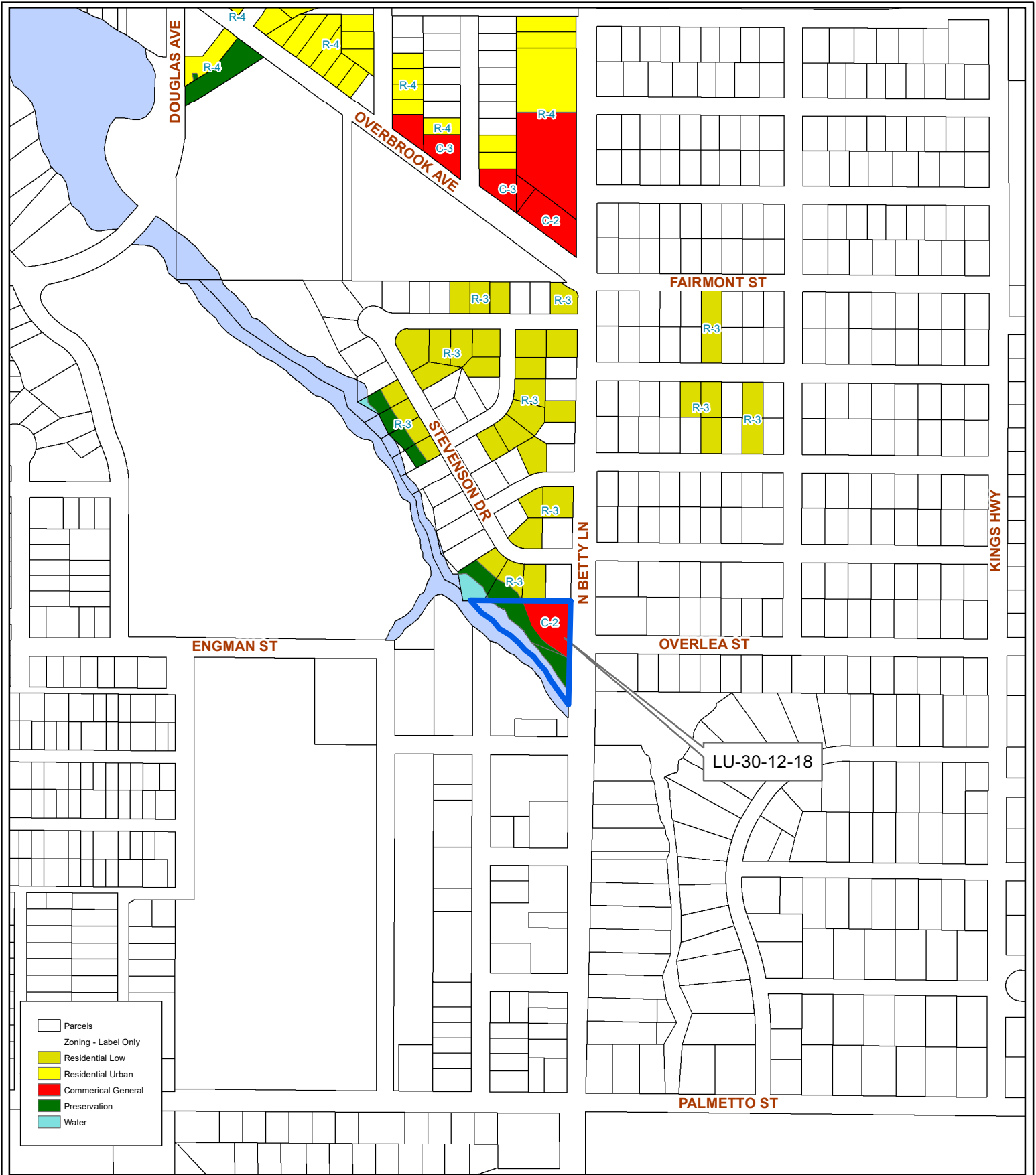
Prepared by: Pinellas County Planning Department



Date: 10/30/2018



1 inch = 0.08 miles



LU-30-12-18
Proposed Land Use & Zoning

Land Use

From: RL, Residential Low and P, Preservation
To: CG, Commercial General and P, Preservation

10/29/15/00000/120/0400

Prepared by: Pinellas County Planning Department



Date: 10/30/2018



1 inch = 0.08 miles