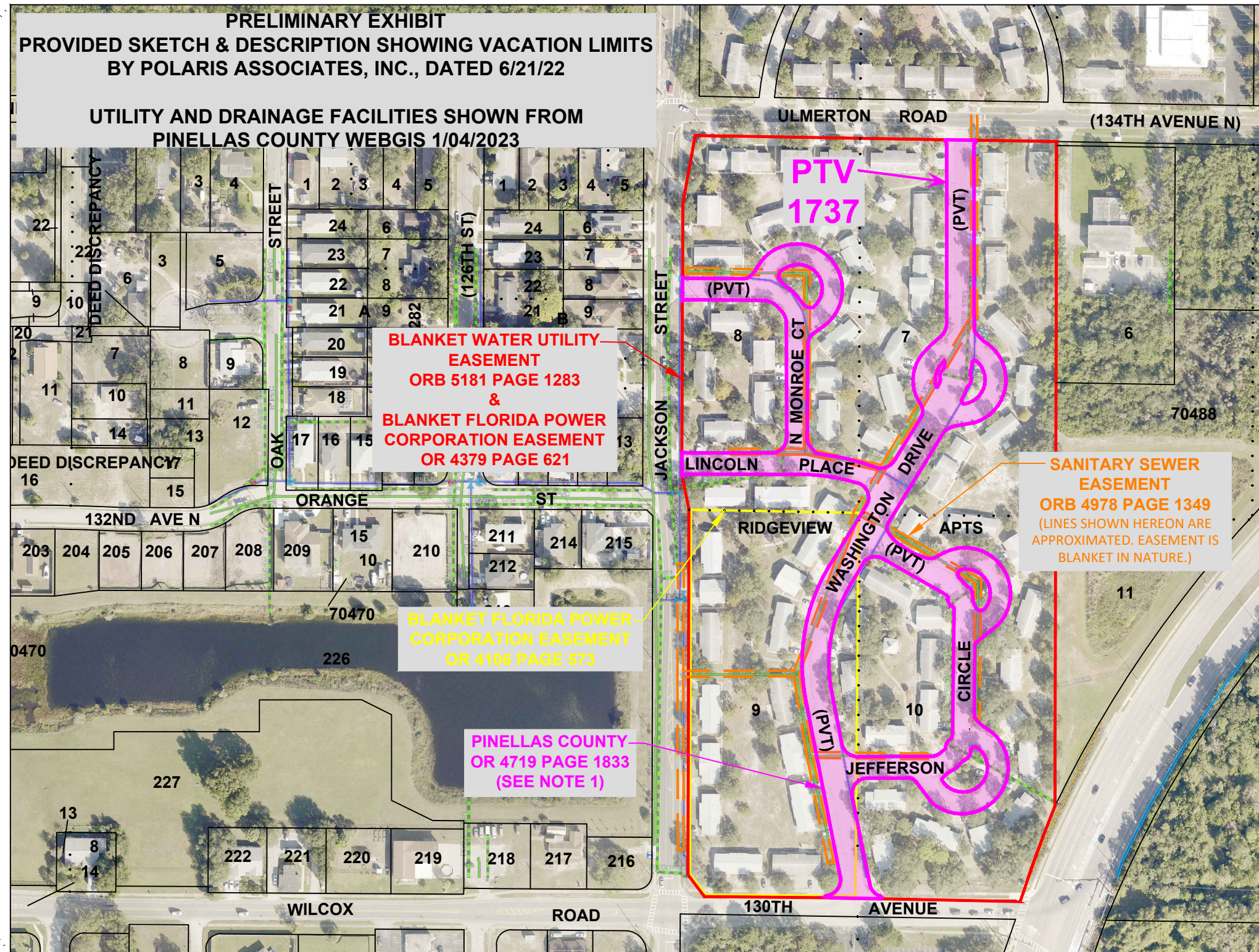
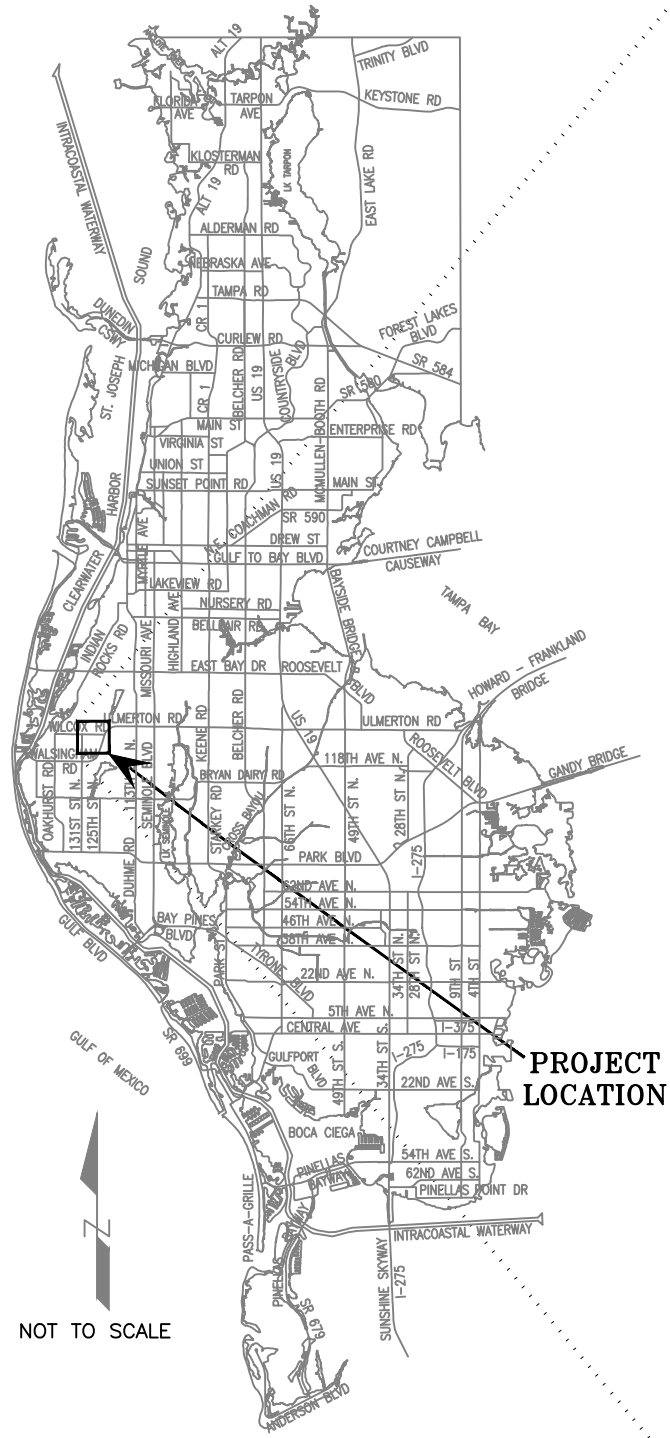


PINELLAS COUNTY MAP

SECTION(S) 09, TOWNSHIP 30 SOUTH, RANGE 15 EAST



**PRELIMINARY EXHIBIT
PROVIDED SKETCH & DESCRIPTION SHOWING VACATION LIMITS
BY POLARIS ASSOCIATES, INC., DATED 6/21/22**

**UTILITY AND DRAINAGE FACILITIES SHOWN FROM
PINELLAS COUNTY WEBGIS 1/04/2023**

**BLANKET WATER UTILITY
EASEMENT
ORB 5181 PAGE 1283
&
BLANKET FLORIDA POWER
CORPORATION EASEMENT
OR 4379 PAGE 621**

**BLANKET FLORIDA POWER
CORPORATION EASEMENT
OR 4106 PAGE 573**

**PINELLAS COUNTY
OR 4719 PAGE 1833
(SEE NOTE 1)**

**SANITARY SEWER
EASEMENT
ORB 4978 PAGE 1349
(LINES SHOWN HEREON ARE
APPROXIMATED. EASEMENT IS
BLANKET IN NATURE.)**

**NOTE 1: OR 4719 PAGE 1833 CONTAINS ADDITIONAL
LANDS BEYOND THE LIMITS SHOWN HEREON.**

SCALE IN FEET 1" = 200'

SURVEY SECTION	BY	DATE
SURVEYED	.	.
TECHNICIAN	AZ	12/22
CHECKED	.	.
SURVEY BOOK NO(S): .		

PINELLAS COUNTY, FLORIDA
PUBLIC WORKS

SURVEY AND MAPPING DIVISION
22211 U.S. HWY, 19 NORTH
CLEARWATER, FLORIDA 33765-2328
PHONE (727) 464-8904



PTV 1737
ACCELA: PVM-22-0017
PINELLAS COUNTY HOUSING AUTHORITY
HERITAGE OAKS

EXHIBIT
NOT A SURVEY

PID: 001851B

501_01737_Exhibit.dwg

DATE: January 4, 2023
PHOTOGRAPHY DATE: 01/22
SURVEY FILE NO.: 0501_01737
SHEET: 01 of 01