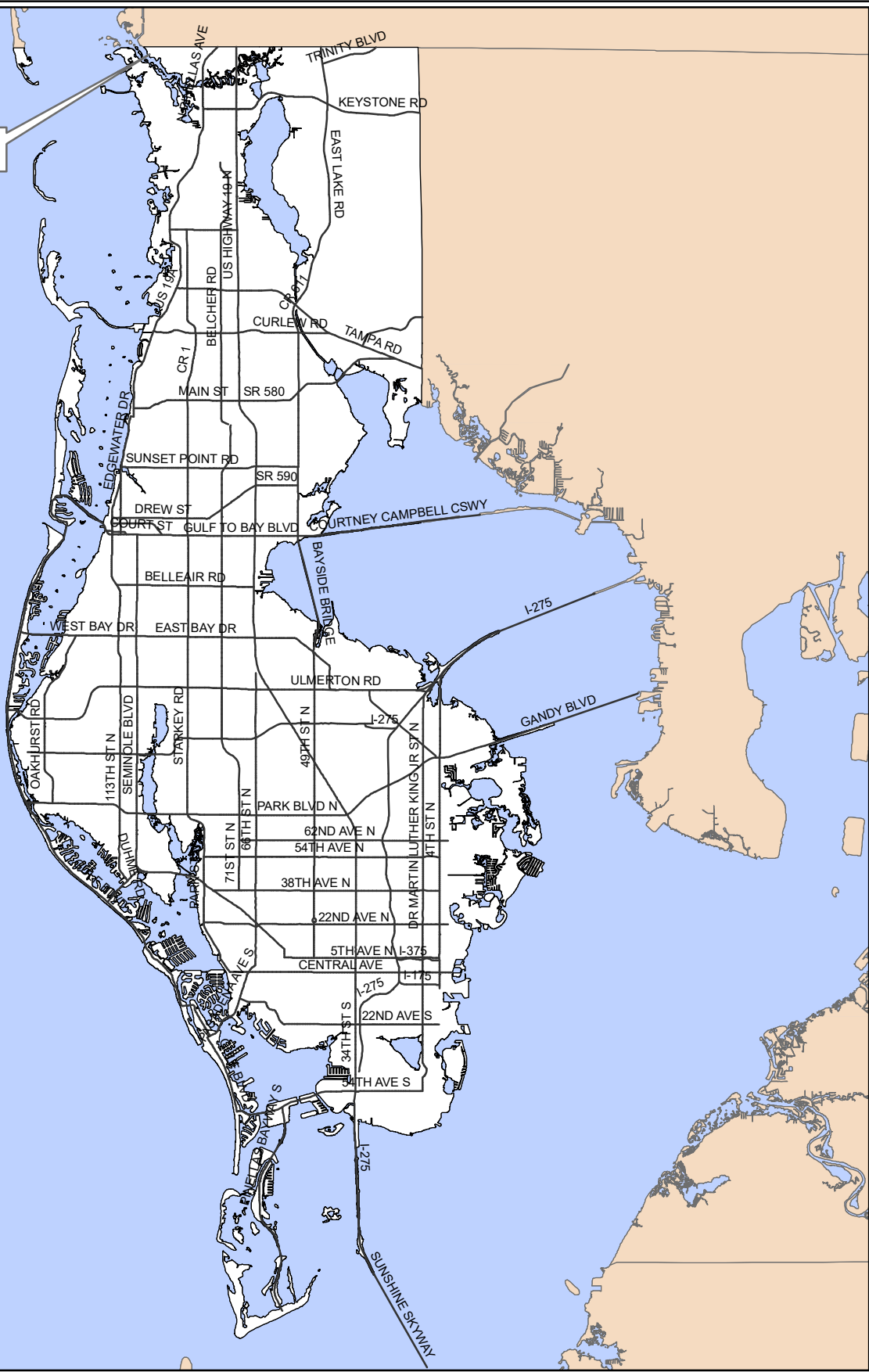


Z/LU-21-10-19



Surrounding Counties

**Z/LU-21-10-19**

**Location Map**

**Zoning**

**From:** R-E, Residential Estate & R-A, Residential Agriculture & R-4, One, Two & Three Family Residential

**To:** CR, Commercial Recreation

**Land Use**

**From:** Residential Low

**To:** Commercial Recreation

02/27/15/00954/003/0010, 0020 & 0040

Prepared by: Pinellas County Planning Department

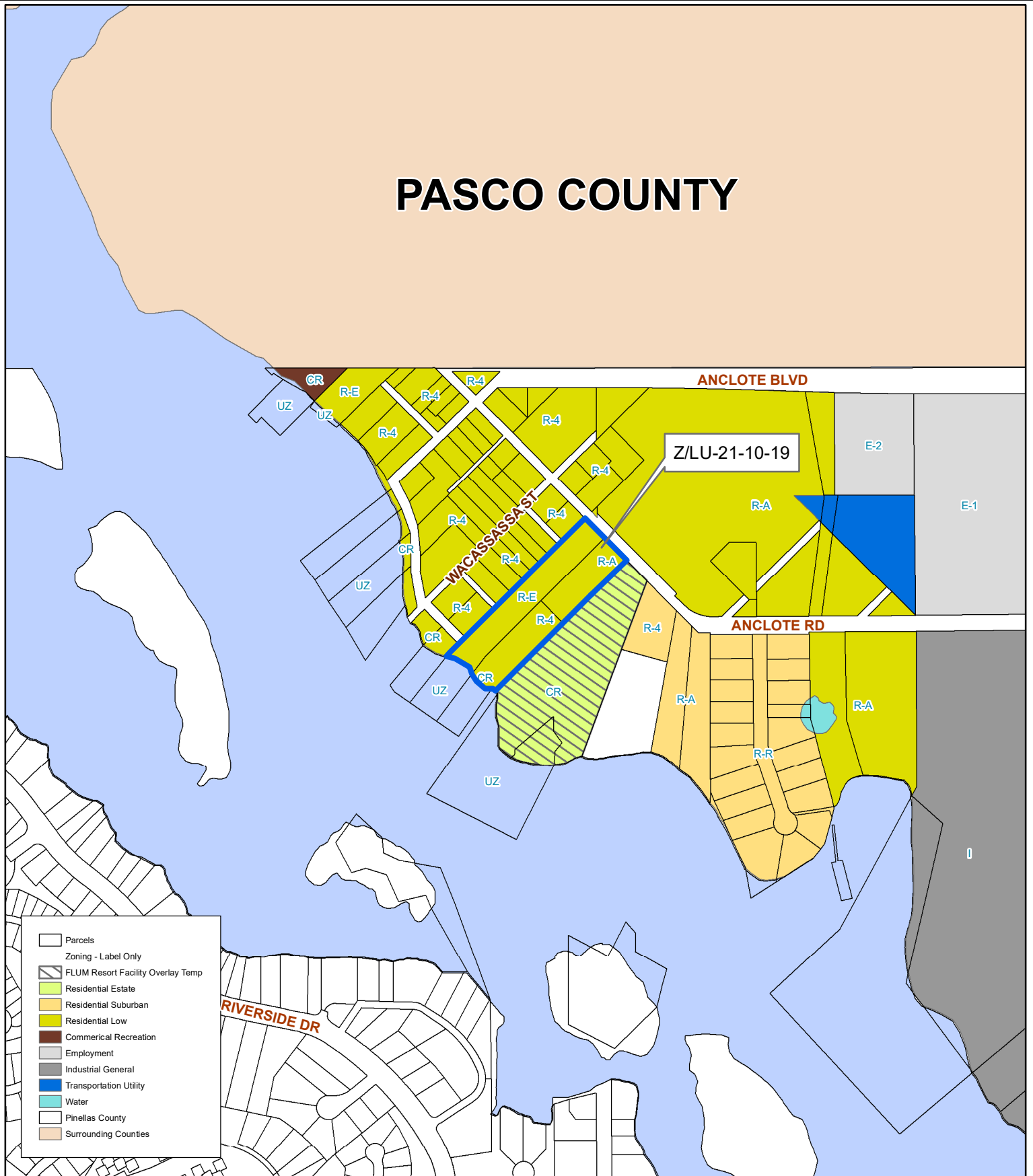


Date: 08/28/2019



1 inch = 4.5 miles

# PASCO COUNTY



**Z/LU-21-10-19**

**Current Land Use & Zoning**

**Zoning**

**From:** R-E, Residential Estate & R-A, Residential Agriculture & R-4, One, Two & Three Family Residential

**To:** CR, Commercial Recreation

**Land Use**

**From:** Residential Low

**To:** Commercial Recreation

02/27/15/00954/003/0010, 0020 & 0040

Prepared by: Pinellas County Planning Department

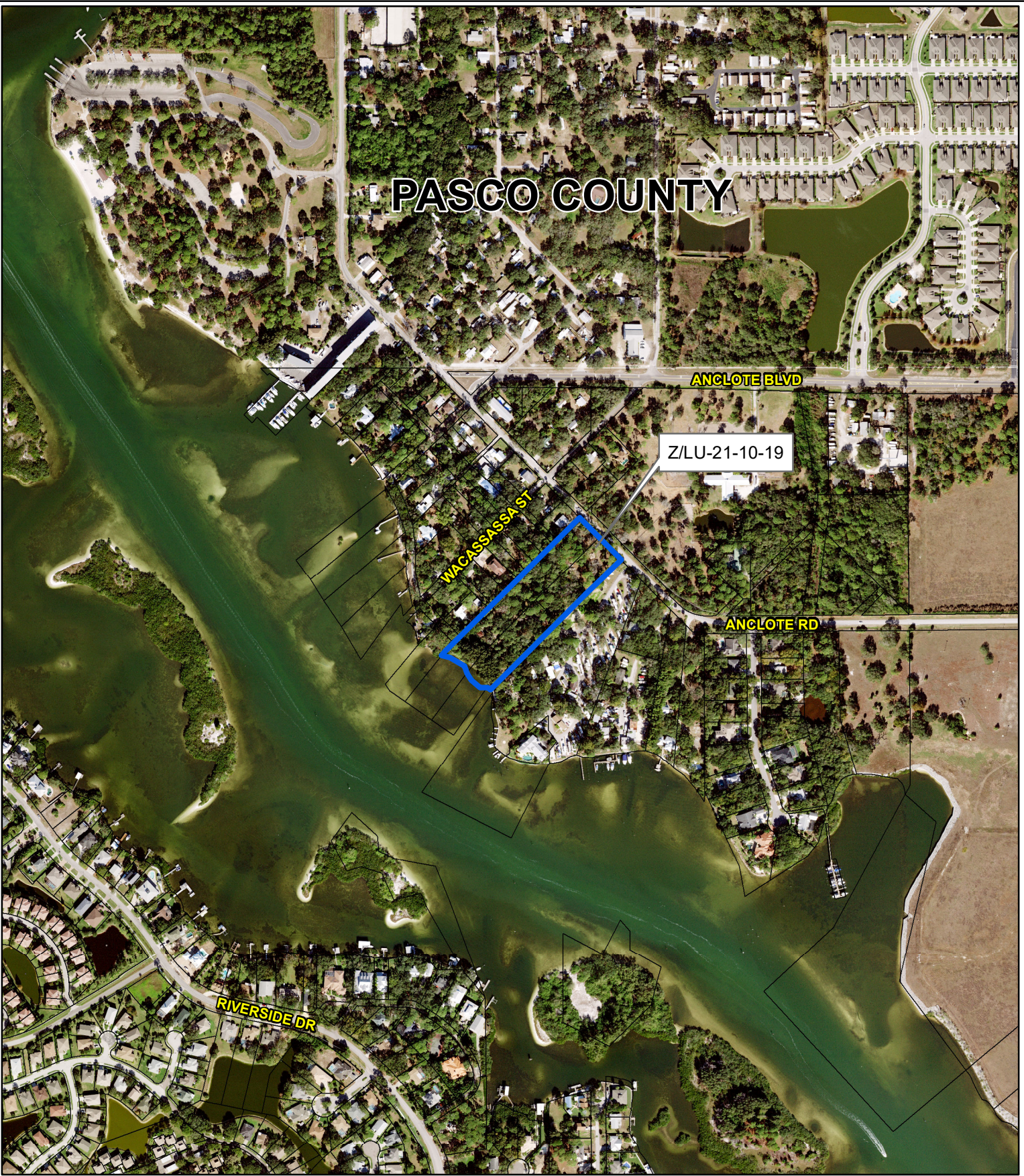


Date: 09/11/2019



1 inch = 0.1 miles

# PASCO COUNTY



**Z/LU-21-10-19**  
**Aerial Map**

**Zoning** From: R-E, Residential Estate & R-A, Residential Agriculture & R-4, One, Two & Three Family Residential  
To: CR, Commercial Recreation

**Land Use** From: Residential Low  
To: Commercial Recreation



02/27/15/00954/003/0010, 0020 & 0040

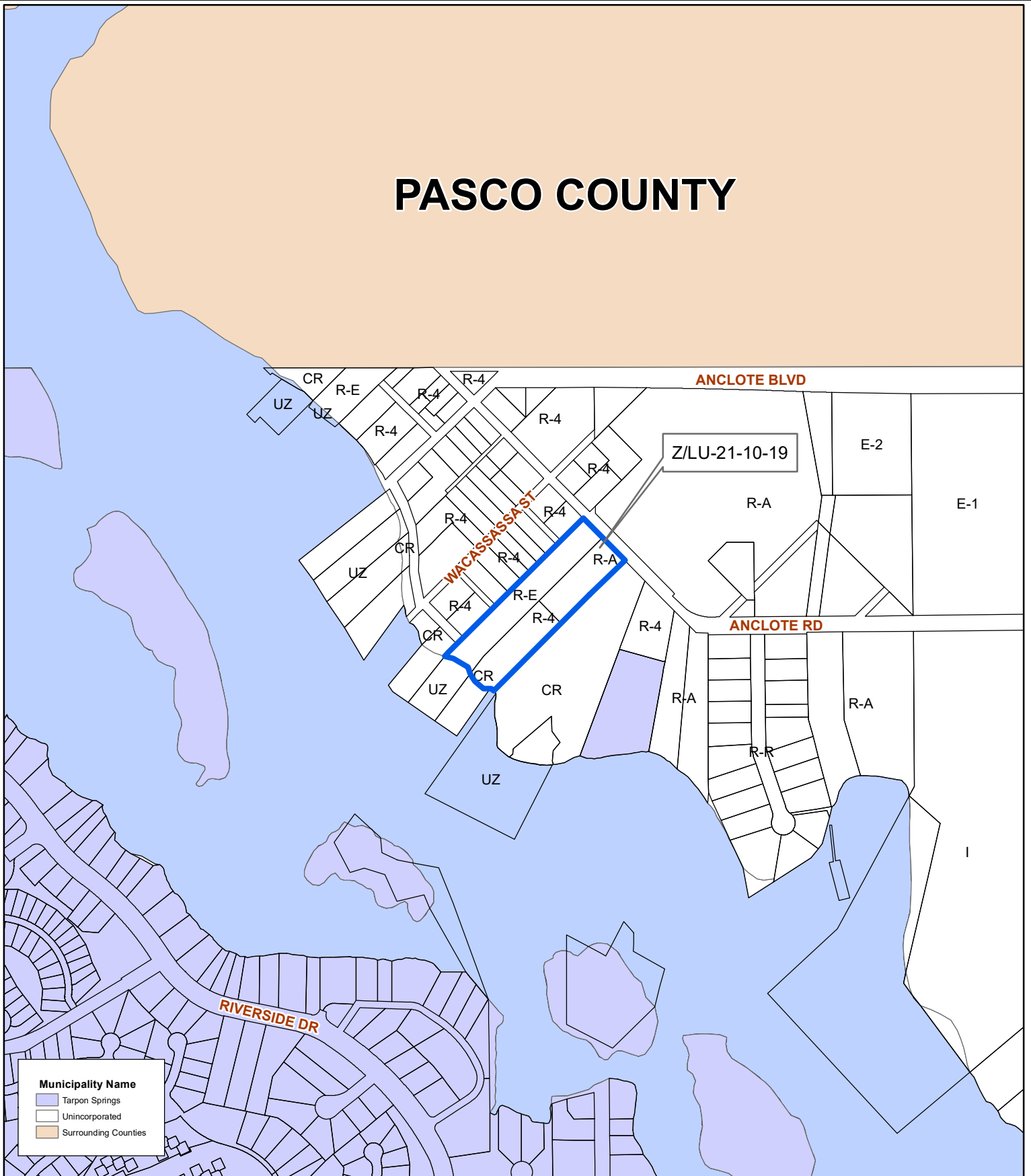
Prepared by: Pinellas County Planning Department



Date: 08/28/2019

1 inch = 0.1 miles

# PASCO COUNTY



**Municipality Name**

- Tarpon Springs
- Unincorporated
- Surrounding Counties

**Z/LU-21-10-19**

**Municipal Map**

**Zoning**

**From:** R-E, Residential Estate & R-A, Residential Agriculture & R-4, One, Two & Three Family Residential

**To:** CR, Commercial Recreation

**Land Use**

**From:** Residential Low

**To:** Commercial Recreation

02/27/15/00954/003/0010, 0020 & 0040

Prepared by: Pinellas County Planning Department

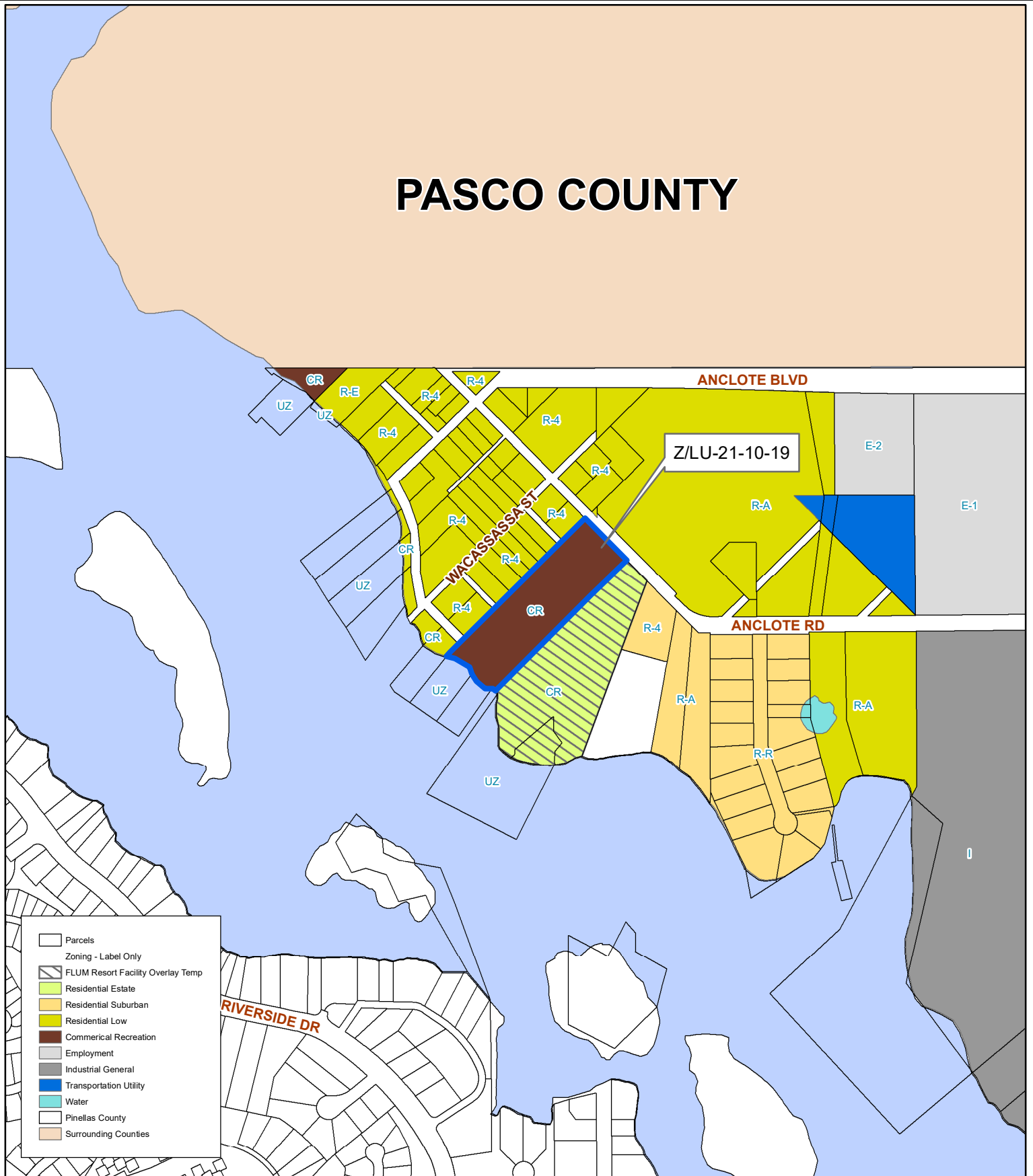


Date: 08/28/2019



1 inch = 0.1 miles

# PASCO COUNTY



**Z/LU-21-10-19**

**Proposed Land Use & Zoning**

**Zoning**

**From:** R-E, Residential Estate & R-A, Residential Agriculture & R-4, One, Two & Three Family Residential

**To:** CR, Commercial Recreation

**Land Use**

**From:** Residential Low

**To:** Commercial Recreation

02/27/15/00954/003/0010, 0020 & 0040

Prepared by: Pinellas County Planning Department



Date: 09/11/2019



1 inch = 0.1 miles