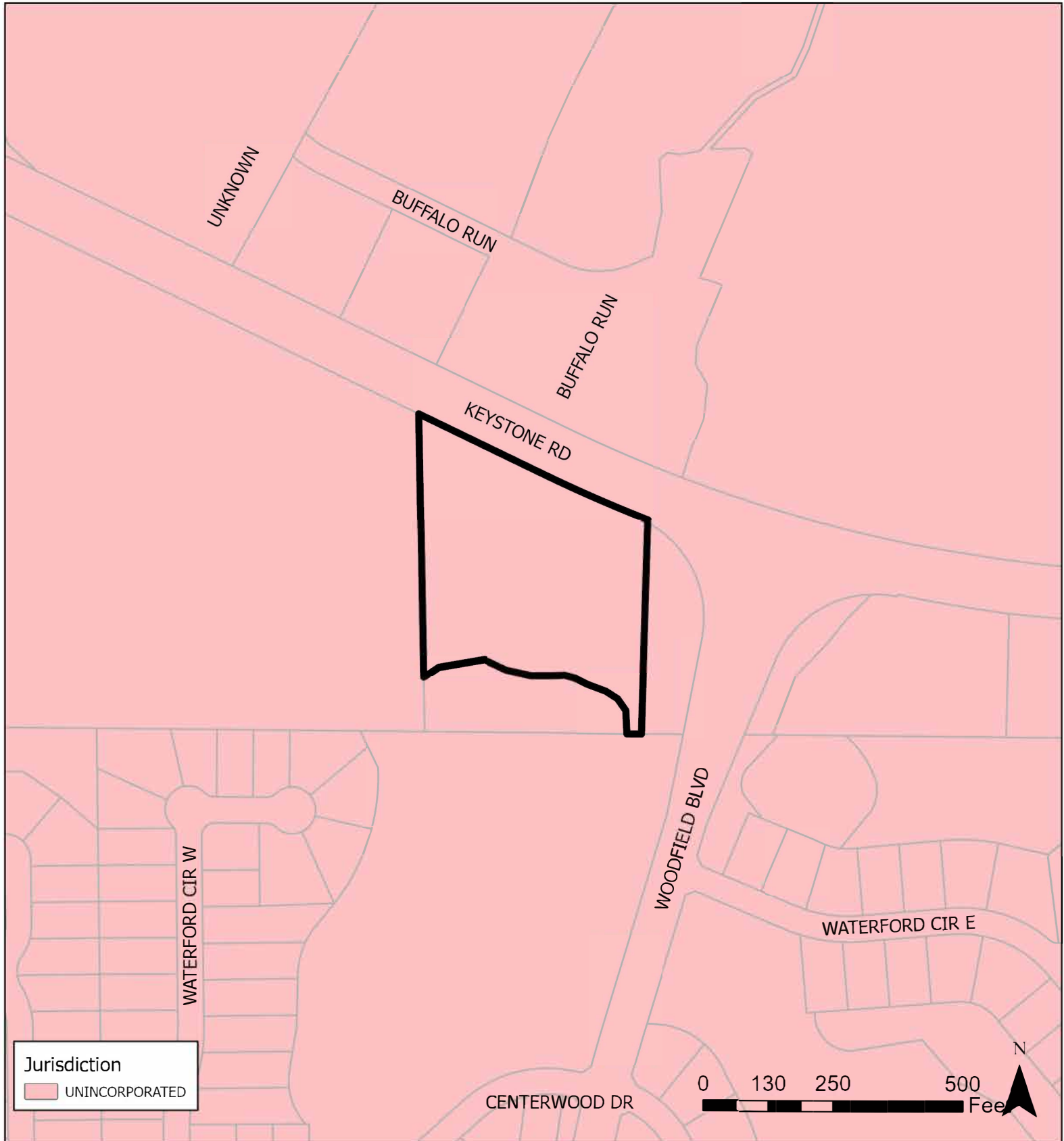




# Case CW26-02

## Map 2: Jurisdictional Map



**JURISDICTION:** Pinellas County      **FROM:** Public/Semi-Public and Preservation  
**AREA:** 4.02 acres m.o.l.      **TO:** Residential Rural and Preservation

# Case CW26-02

## Map 3: Aerial Map



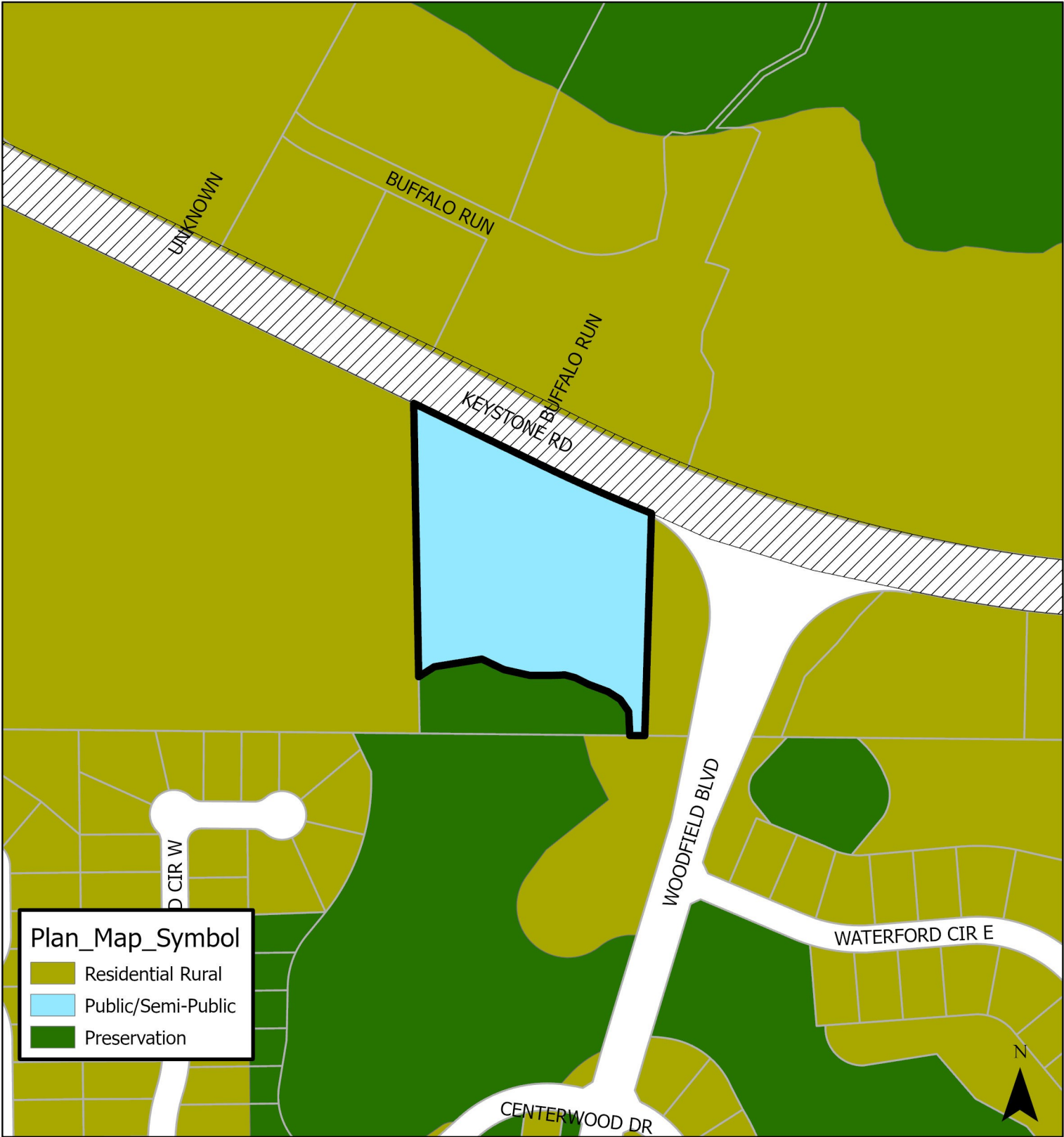
0 125 250 500 Feet

**JURISDICTION:** Pinellas County    **FROM:** Public/Semi-Public and Preservation

**AREA:** 4.02 acres m.o.l.    **TO:** Residential Rural and Preservation

Case CW26-02

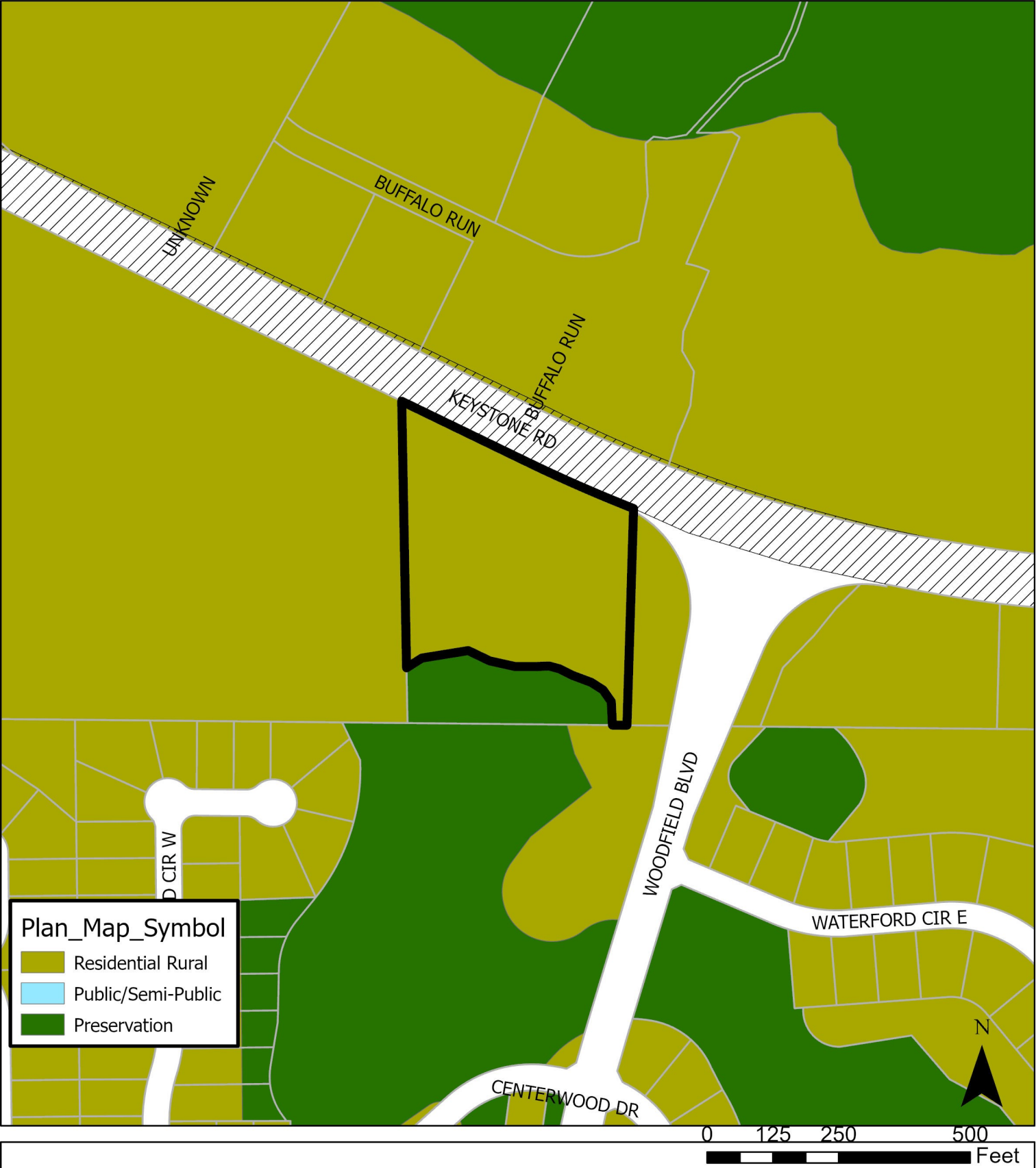
Map 4: Current Countywide Plan Map



Plan_Map_Symbol	
	Residential Rural
	Public/Semi-Public
	Preservation

**JURISDICTION:** Pinellas County    **FROM:** Public/Semi-public and Preservation

**AREA:** 4.02 acres m.o.l                      **TO:** Residential Rural and Preservation

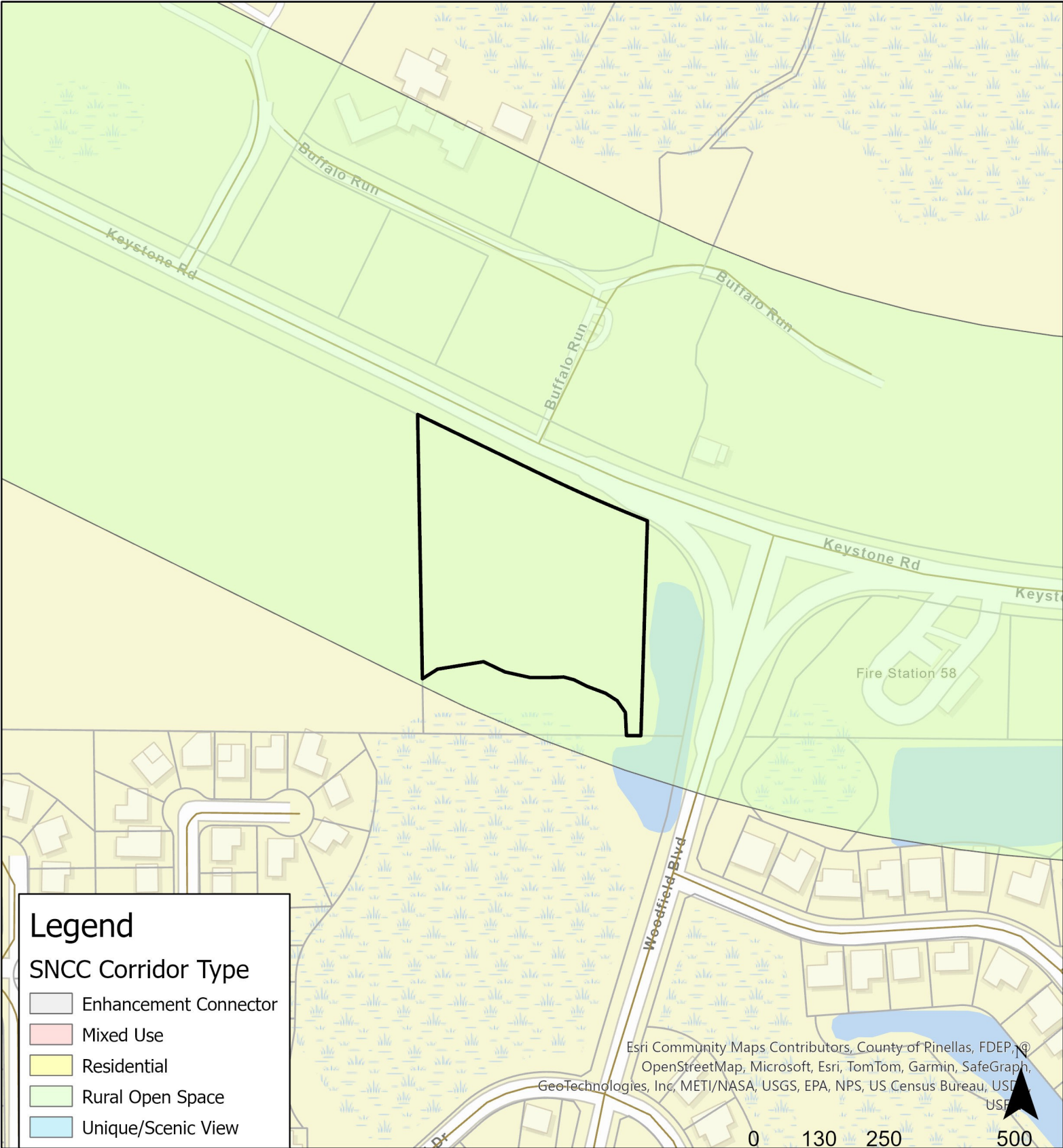


**JURISDICTION:** Pinellas County

**AREA:** 4.02 acres m.o.l.

**FROM:** Public/Semi-Public and Preservation

**TO:** Residential Rural and Preservation



**JURISDICTION:** Pinellas County **FROM:** Public/Semi-Public and Preservation

**AREA:** 4.02 acres m.o.l. **TO:** Residential Rural and Preservation