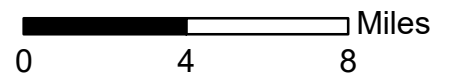


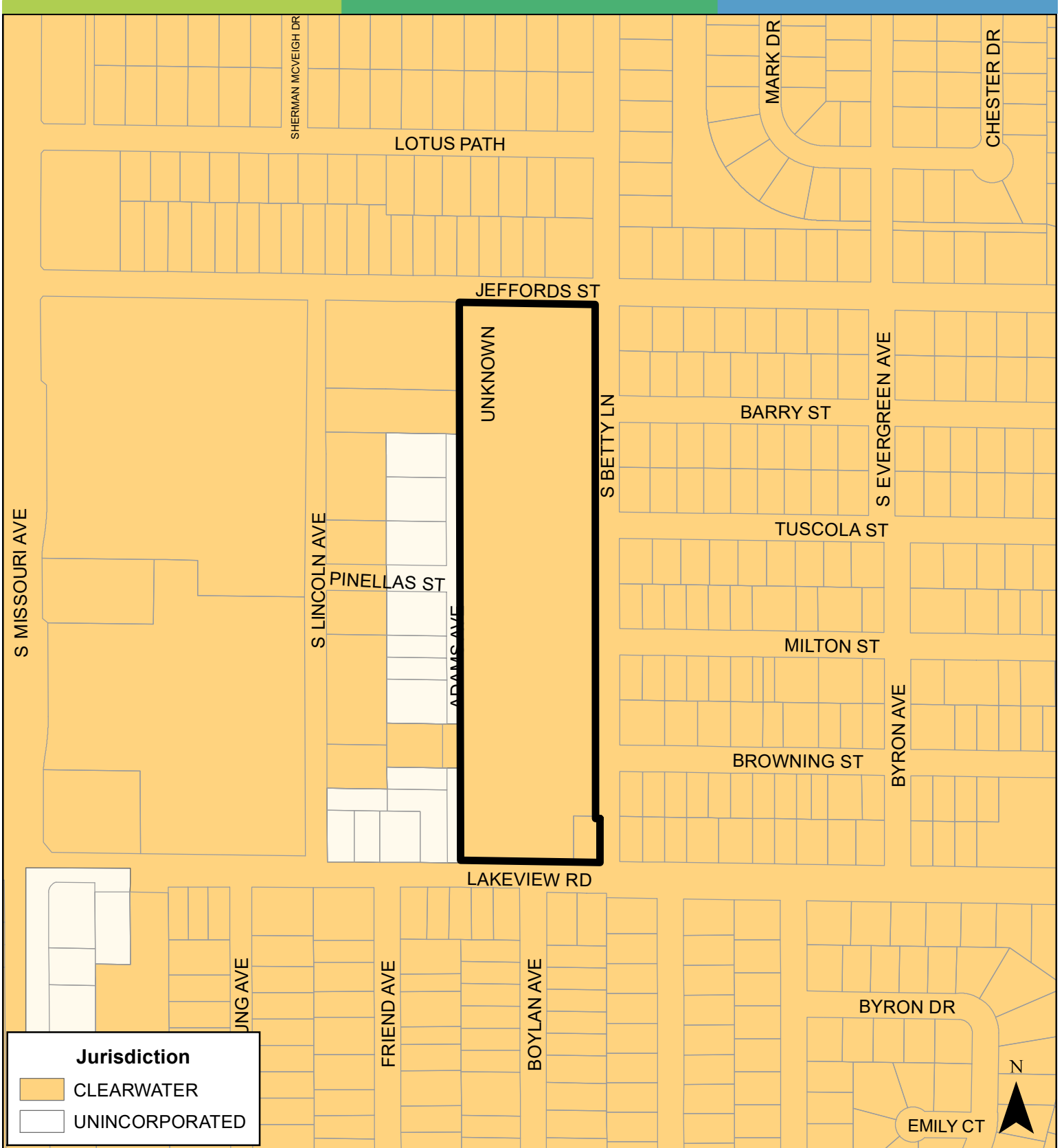
JURISDICTION: Clearwater

AREA: 9.00 Acres

FROM: Residential Medium and
Residential Low Medium

TO: Residential Low Medium

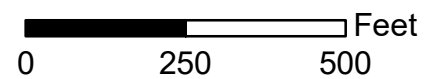




JURISDICTION: Clearwater

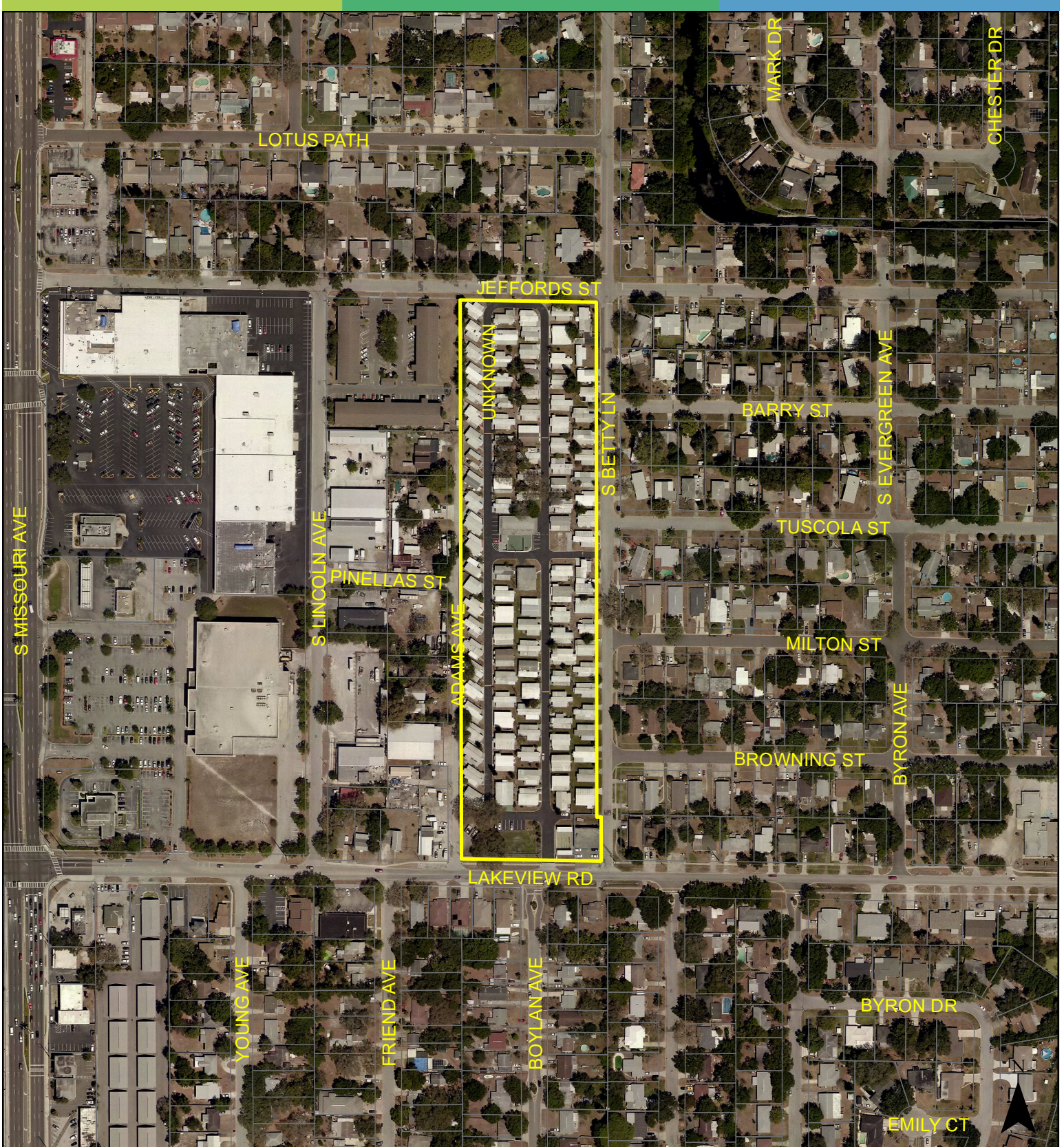
AREA: 9.00 Acres

FROM: Residential Medium and
Residential Low Medium
TO: Residential Low Medium



Case CW21-05

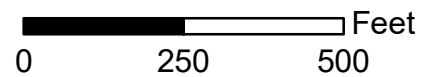
Map 3: Aerial Map

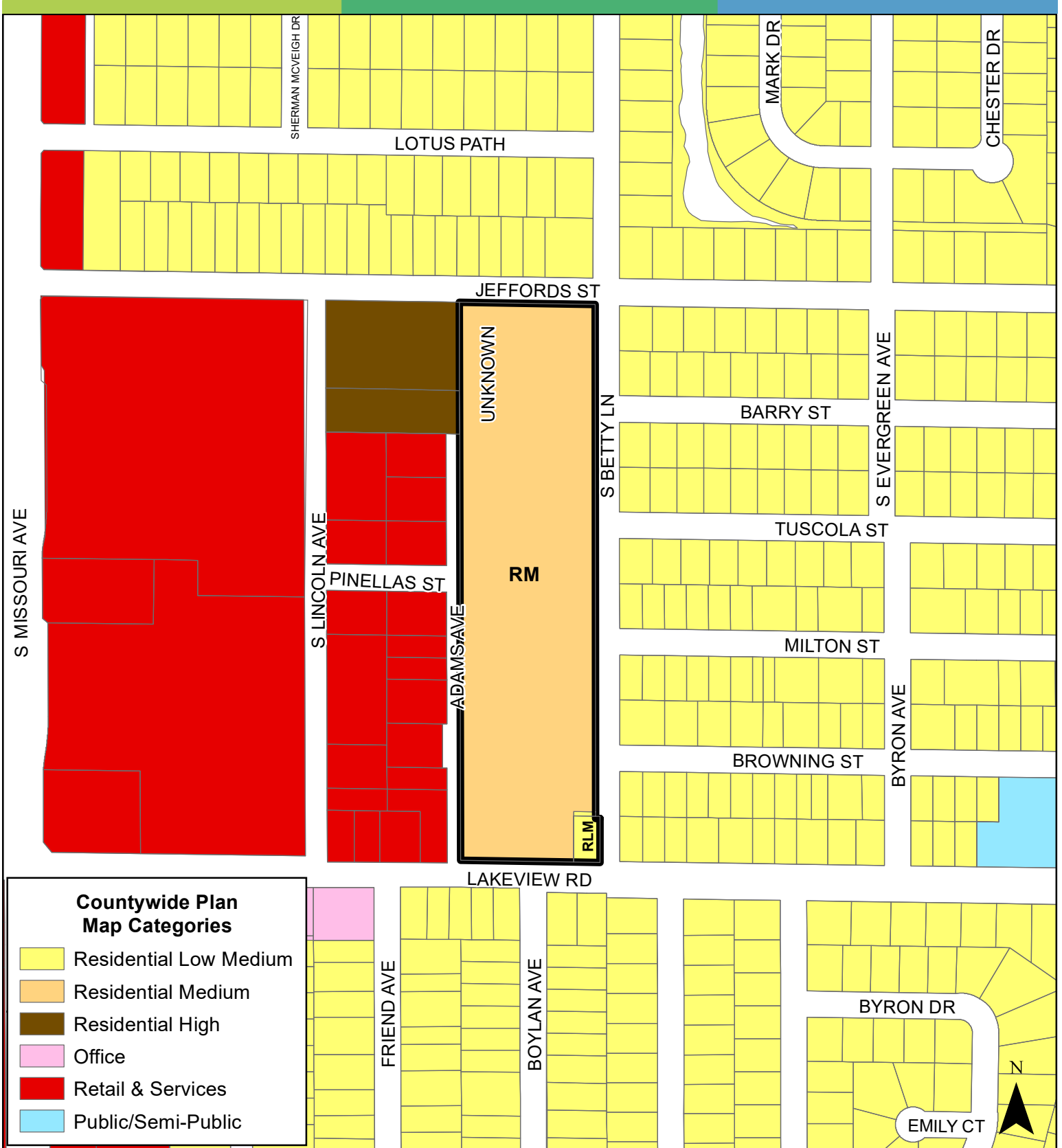


JURISDICTION: Clearwater

AREA: 9.00 Acres

FROM: Residential Medium and
Residential Low Medium
TO: Residential Low Medium

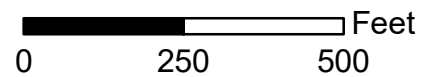


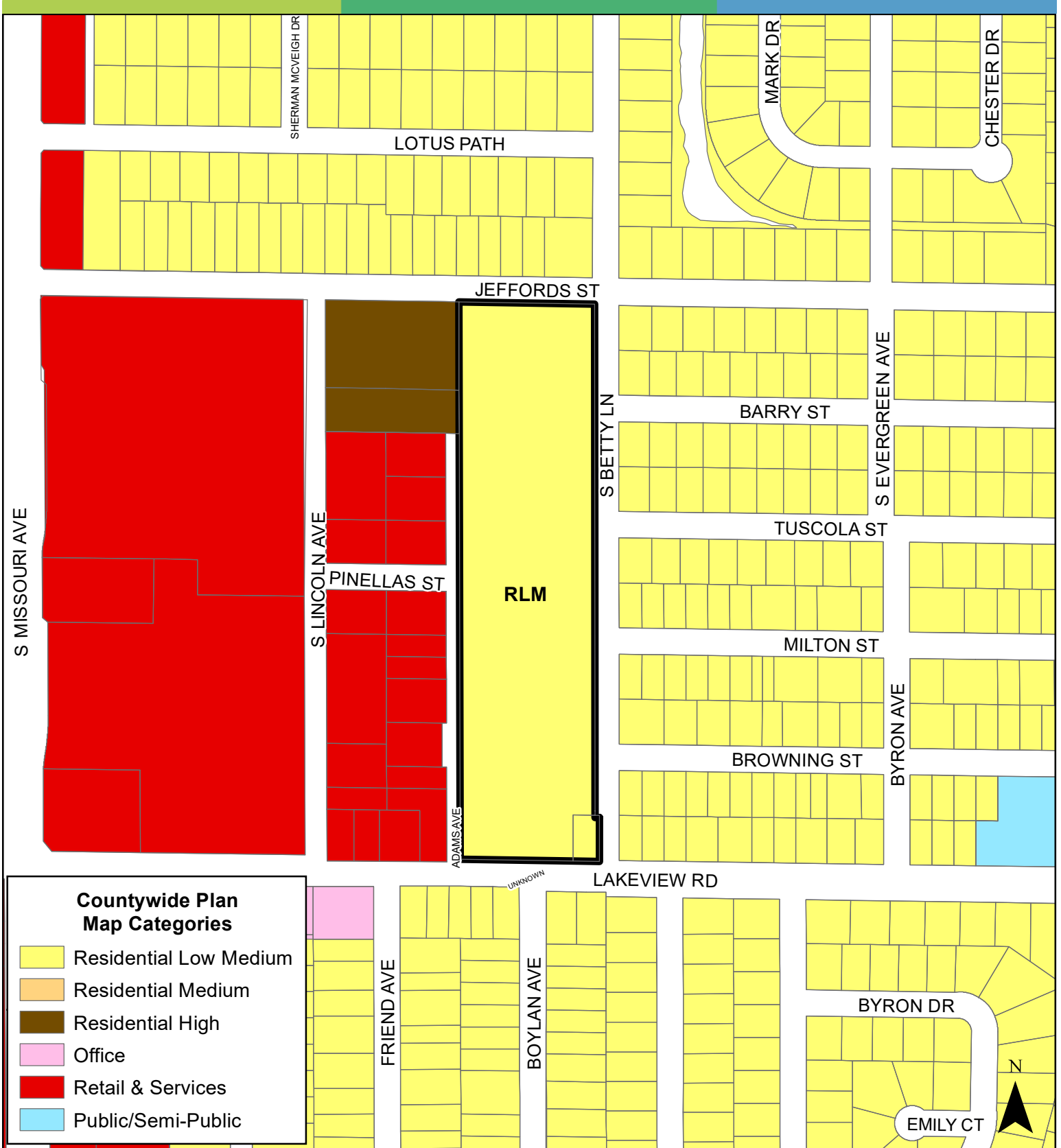


JURISDICTION: Clearwater

AREA: 9.00 Acres

FROM: Residential Medium and Residential Low Medium
TO: Residential Low Medium





JURISDICTION: Clearwater

AREA: 9.00 Acres

FROM: Residential Medium and Residential Low Medium
TO: Residential Low Medium

