

ZON-24-06

Location Map

Zoning

From: GO, General office, NE corner of property
(majority of property zoned C-2)

To: C-2, General Commercial and Services



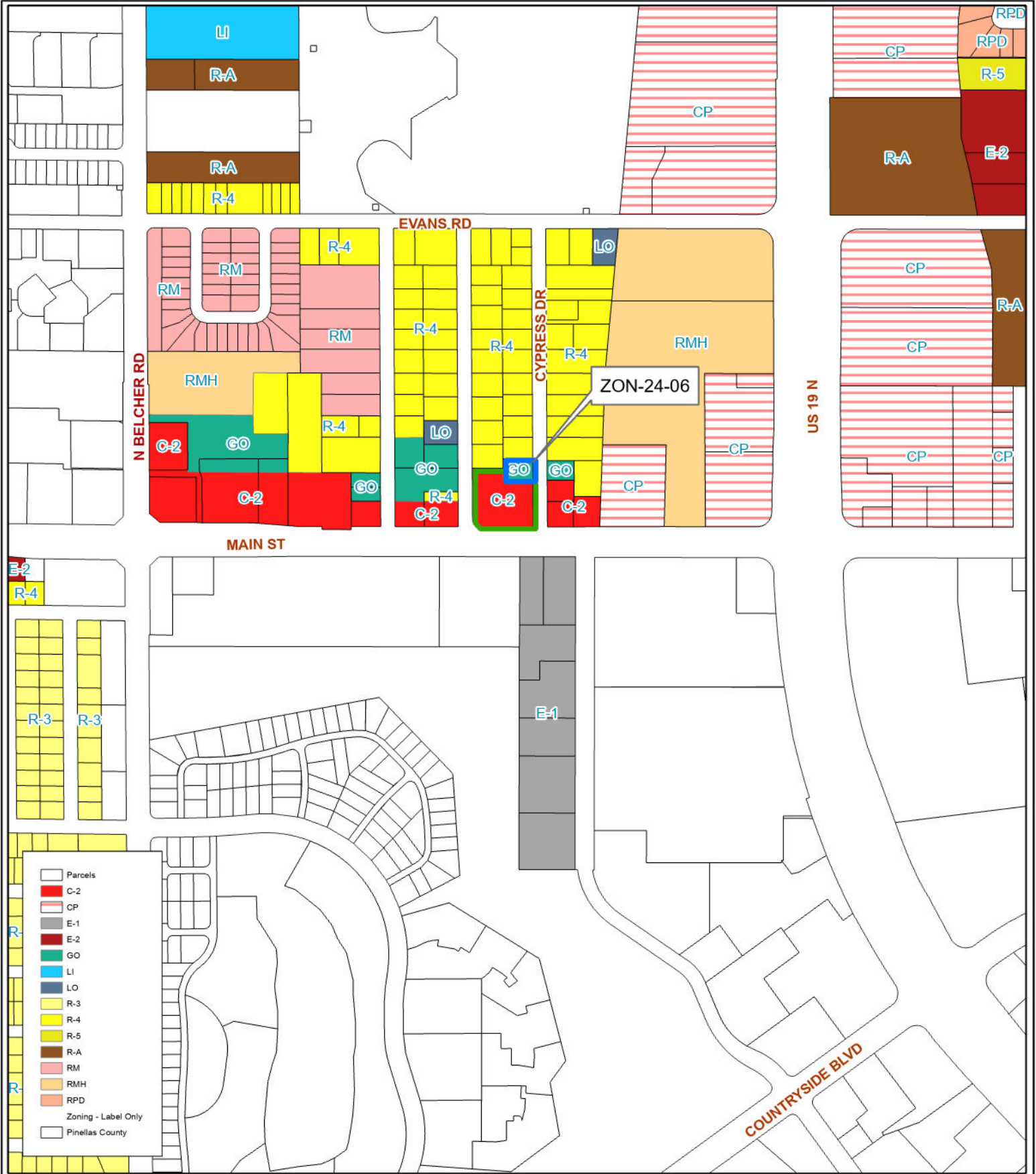
30/28/16/07254/000/2002

Prepared by: Housing & Community Development Department



Date: 11/7/2024

1:285,000



- Parcels
- C-2
- CP
- E-1
- E-2
- GO
- LI
- LO
- R-3
- R-4
- R-5
- R-A
- RM
- RMH
- RPD
- Zoning - Label Only
- Pinellas County

ZON-24-06

Current Zoning

Zoning

From: GO, General office, NE corner of property
(majority of property zoned C-2)

To: C-2, General Commercial and Services

30/28/16/07254/000/2002

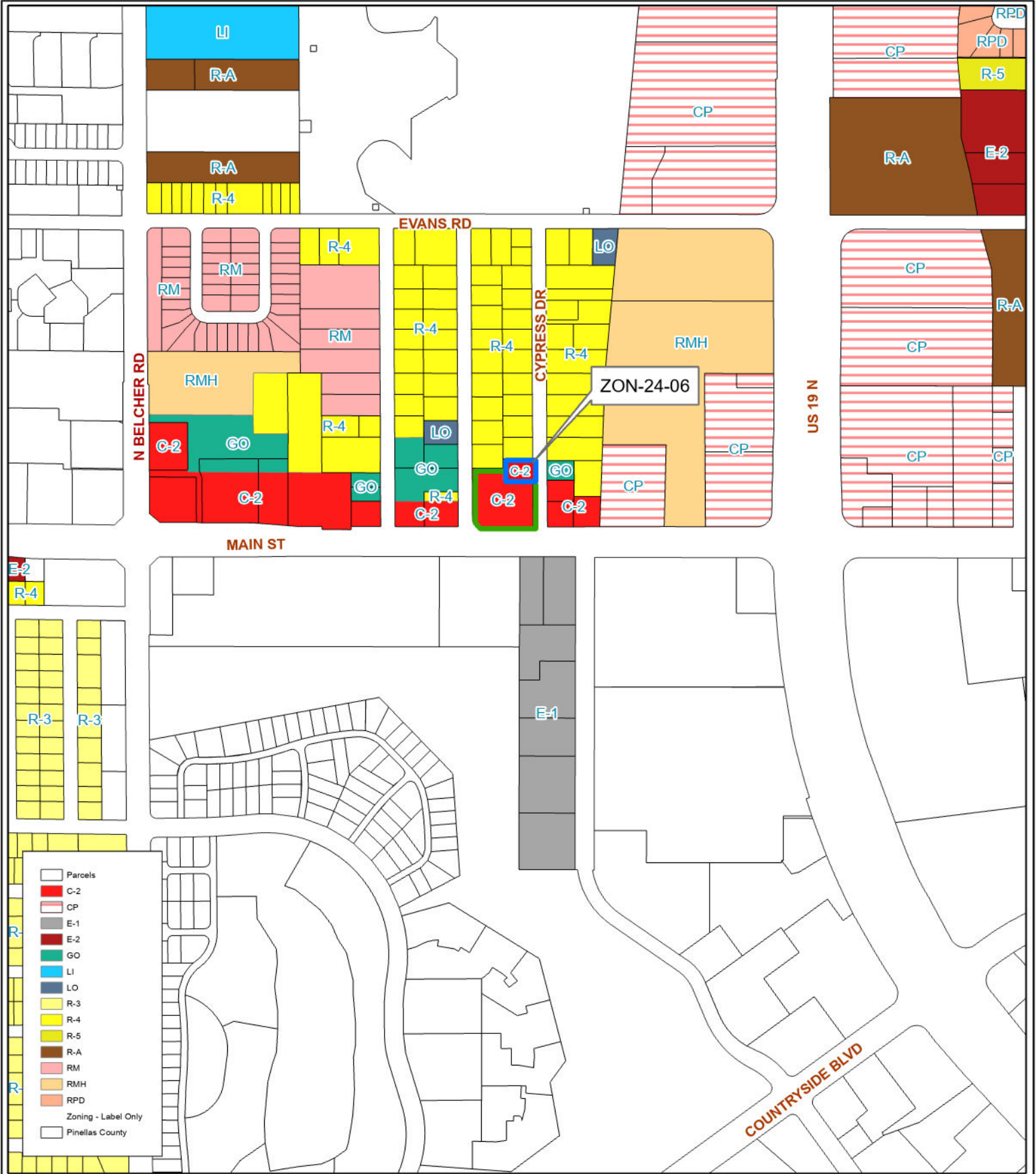
Prepared by: Housing & Community Development Department



Date: 11/7/2024



1:6,500



ZON-24-06

Proposed Zoning

Zoning

From: GO, General office, NE corner of property (majority of property zoned C-2)
To: C-2, General Commercial and Services



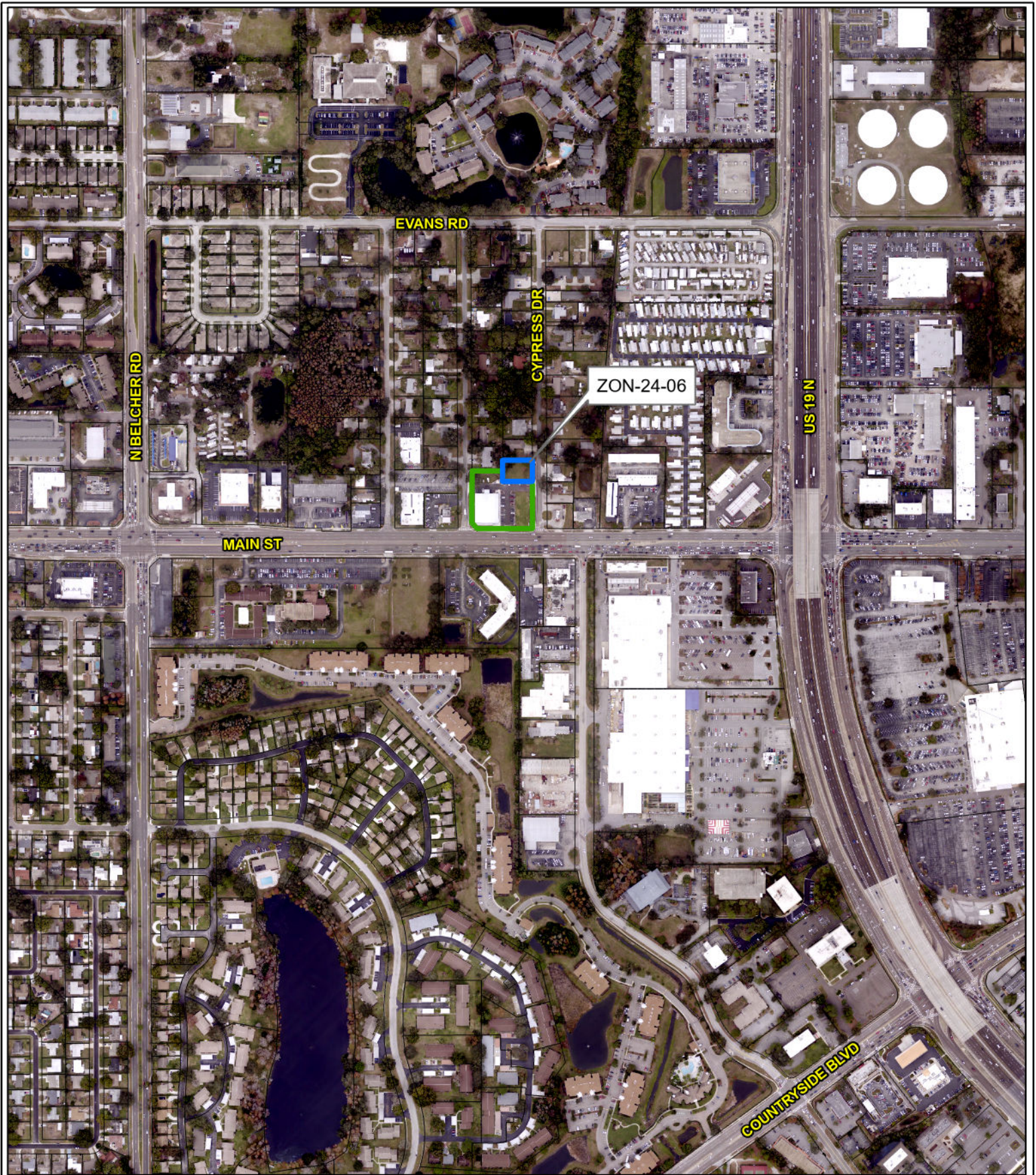
30/28/16/07254/000/2002

Prepared by: Housing & Community Development Department



Date: 11/7/2024

1:6,500



ZON-24-06

Aerial Map

Zoning

From: GO, General office, NE corner of property
(majority of property zoned C-2)
To: C-2, General Commercial and Services



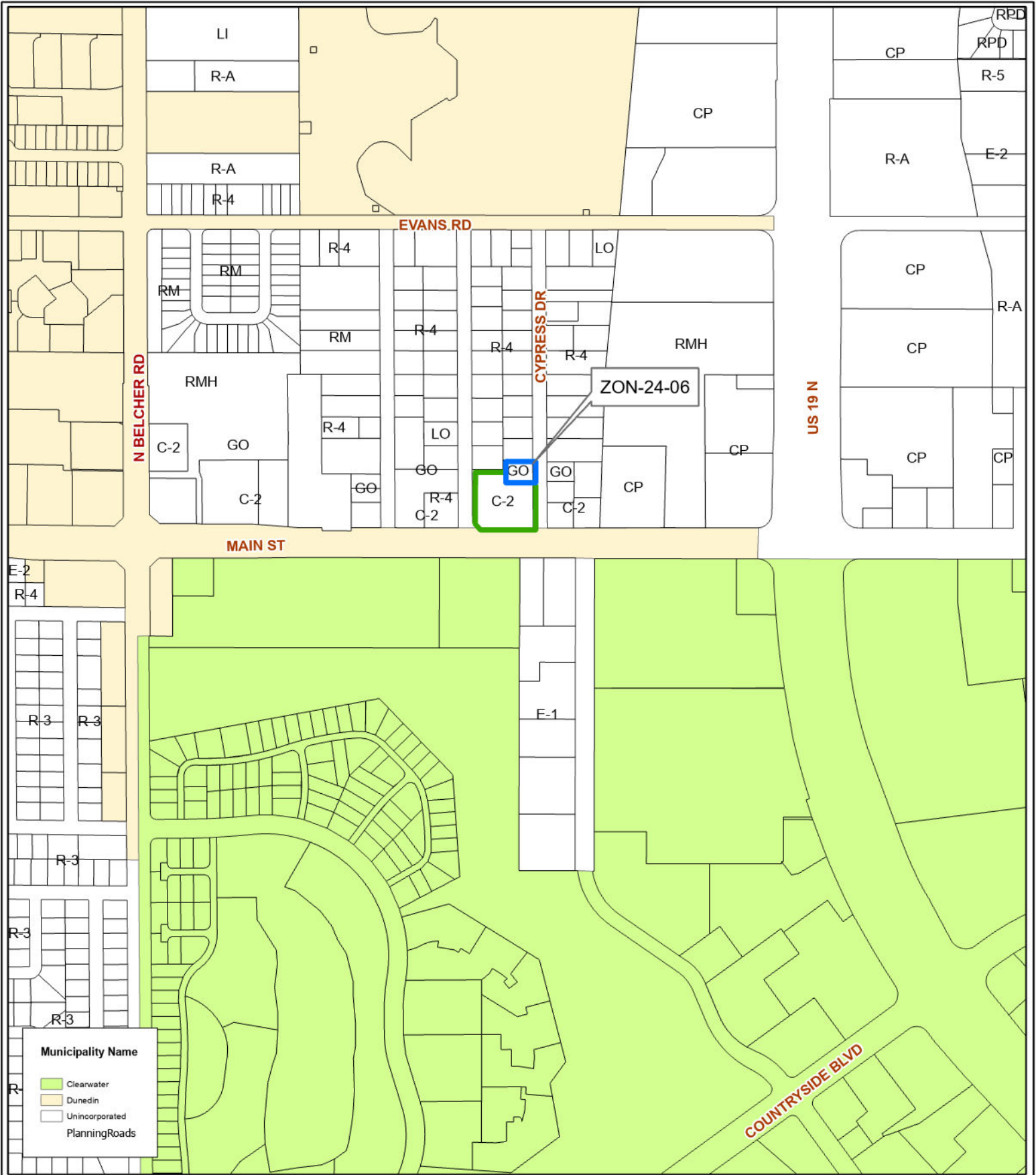
30/28/16/07254/000/2002

Prepared by: Housing & Community Development Department



Date: 11/7/2024

1:6,500



Municipality Name

- Clearwater
- Dunedin
- Unincorporated
- Planning Roads

ZON-24-06

Municipal Map

Zoning

From: GO, General office, NE corner of property (majority of property zoned C-2)

To: C-2, General Commercial and Services



30/28/16/07254/000/2002

Prepared by: Housing & Community Development Department



Date: 11/7/2024

1:6,500