

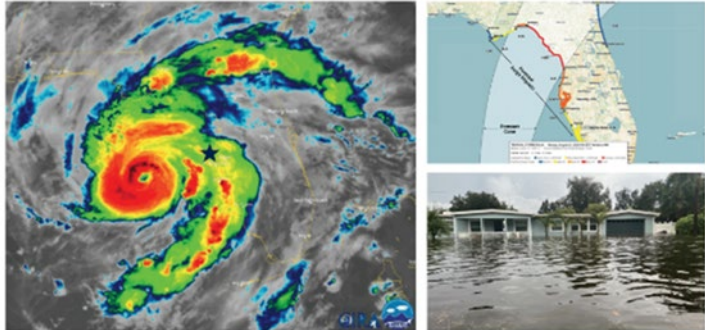


Hurricane Season 2024



Cathie Perkins – Director -Emergency Management
Paul Dean – Deputy Director - Public Works

PINELLAS COUNTY HURRICANE GUIDE

- Storm impacts extend far beyond the forecast cone you see on the news or social media.
- Hurricane Idalia flooded more than 1,500 homes in Pinellas County in 2023.
- The center of the storm was 100 miles offshore.



READY , SET , PROTECT

 The 2024 Pinellas County Hurricane Guide includes activities for kids to encourage active learning about hurricane risks and ways to prepare. 

Shelters

- **Assessment with State**
- **Installation of Antennas**
- **Mitigation Projects**
 - Clearwater High
 - Lealman Exchange Kitchen
 - Exeter Screens
- **Step Down Locations**
- **Staff Training**
- **Phased Approach to opening**



Communications

- **Communications Exercises**
- **Cross Agency Training and Exercises**
- **Starlink**
 - Permanent mount at Emergency Operations Center and Emergency Response Building
 - 2 portable units



Partnerships



St. Petersburg
Free Clinic



Hurricane Season
is No Joke!

1. Know the Facts

June 1

Hurricane season
lasts from June 1 -
November 30

Hurricanes can
cause billions of
dollars in damages



2. Make a plan

Make sure you know
your evacuation
route

Have a hurricane kit

Have access to clean
water/food



3. Stay Prepared

Bring outdoor furniture
inside

Make sure any animals
are safe

Keep away from
windows



FAIRGROUNDS

St. Pete

Increased Messaging

- Evacuation
- Mariner Brochure
- Sandbags/Flood Barriers



ALERT PINELLAS
 Tuesday, August 29th, 2023 - 9:46 A.M.

Storm surge flooding of four to seven feet, heavy rainfall, and full moon tides are expected to cause flooding in low lying and coastal areas. Mandatory evacuation orders for Evacuation Zone A and mobile homes remain in effect.

Drawbridge schedule changes

When a hurricane approaches, Pinellas County drawbridges will open less often so that vehicles can evacuate over the bridge. Eventually, bridges will be kept in the down position and will not respond until it's safe to do so.

The U.S. Coast Guard will issue a special marine advisory on Channel 16 before the drawbridge schedule changes.

Tune in to emergency information

- U.S. Coast Guard Special Marine Advisory, Channel 16
- U.S. Coast Guard www.uscg.mil
- Pinellas County emergency information pinellas.gov/emergency
- County Information Center (during emergencies), (272) 464-4333
- Pinellas County Emergency Management, (272) 464-3600
- NOAA Weather Alert Radio (SAME code 01233) or frequency 162.400
- RadioOne Hurricane Center hurricane.radioone.com
- National Weather Service Tampa Bay www.weather.gov/tmb

Get alerts

- Sign up for Alert Pinellas: pinellas.gov/alertpinellas
- Download the Ready Pinellas app from the App Store or Google Play: pinellas.gov/readypinellas

If you live on a boat

Never consider riding out a storm on a boat. No matter how valuable your boat is to you, it's not worth your life. If possible, stay with friends or family outside of the area ordered to evacuate. Pinellas County has three types of public shelters: general population, special needs and pet-friendly. Shelter locations will be announced through emergency notification systems, online and by local media outlets. For more information at disaster.pinellas.gov.

Learn more at pinellas.gov or the Transit mobile app.

Preparing Your Boat for Hurricane Season

Self-Serve Sandbag Pickup
 2855 109th Ave N, St. Petersburg, FL 33716

Self-Serve Sandbag Pickup site guidelines:

- Limit 10 per household
- Hours: Mon - Fri, 6-6; Sat., 7-5. Closed Sun.
- This site will NOT be re-stocked when Pinellas is in the path of a hurricane
- Visit <https://pinellas.gov/sandbags> for more information

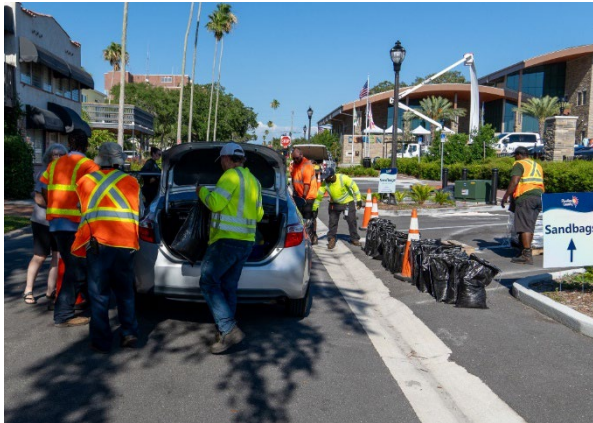
Sandbag pickup site (next to recycle bins)

Enter at 28th St. N and 109th Ave.

Enter Here

Public Works Planning

- Preseason Sandbag Events
- Debris Management Preparation



Actions to Take

- **Know Your Risk**
 - **Assess your vulnerabilities**
- **Make a Plan**
 - **Family**
 - **Business/Employees**
 - **Clients**
- **Stay Informed**
 - **Alert Pinellas**
 - **Ready Pinellas**

Know Your Risk



Make a Plan



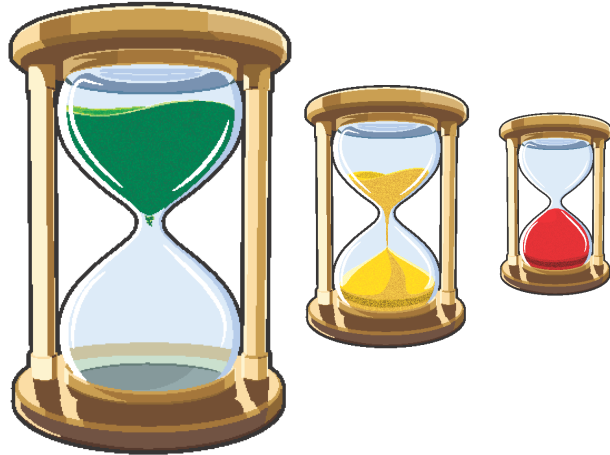
Sign up for emergency notifications through Alert Pinellas



Time is the one resource you cannot get more of



Are you ready?



 **ALERTPinellas**
In emergencies, stay informed.
Sign up for emergency notifications through Alert Pinellas

READY , SET , PROTECT