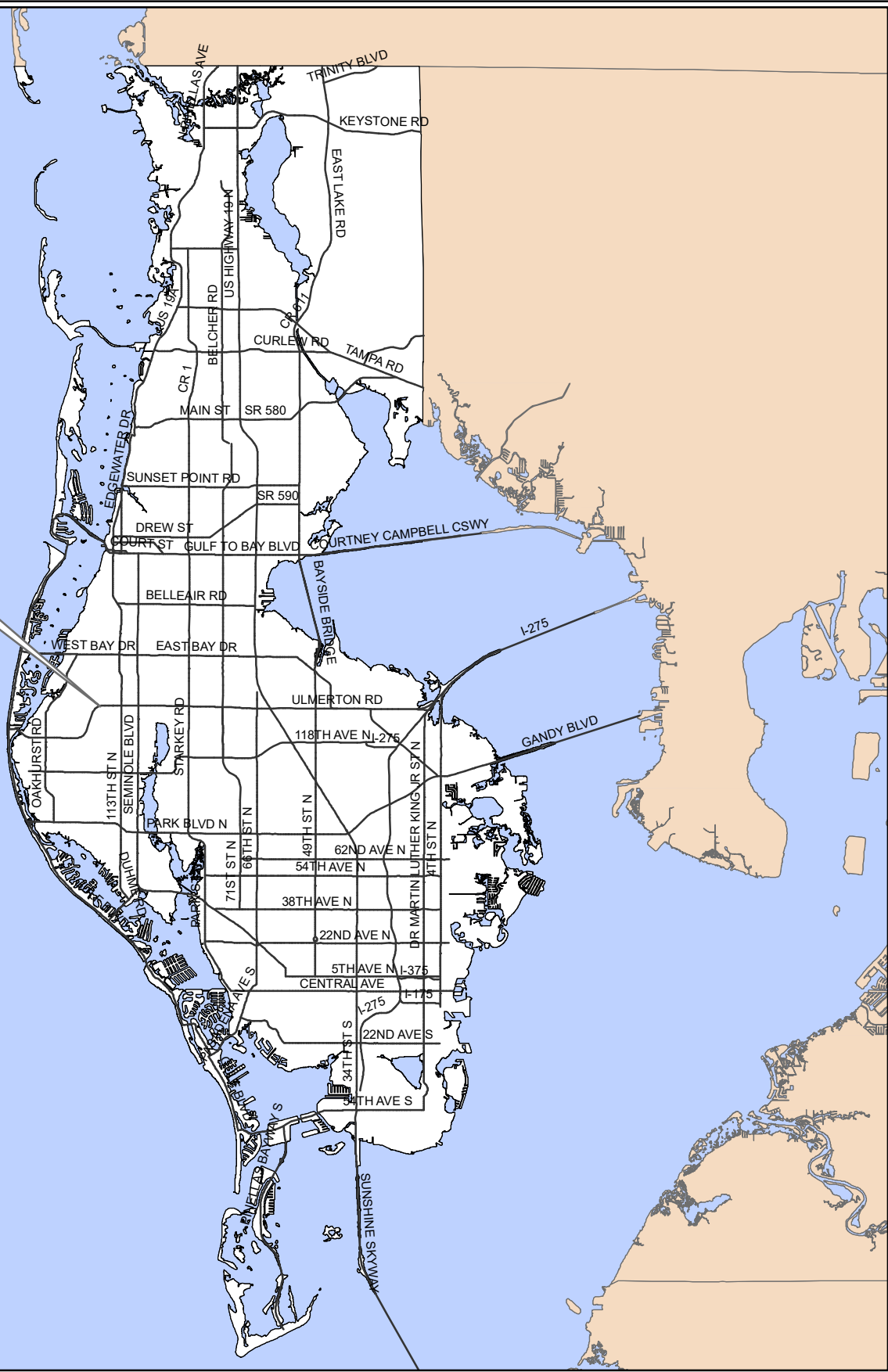


ZLU-20-10



Surrounding Counties

### ZLU-20-10

### Location Map

**Zoning** From: R-3, Single Family Residential (0.11 acre) and R-4, One, Two & Three Family Residential (0.44 acre)  
 To: RM, Multiple-Family Residential (0.55 acre)

**Land Use** From: Residential Low  
 To: Residential Low Medium (0.55 acre)



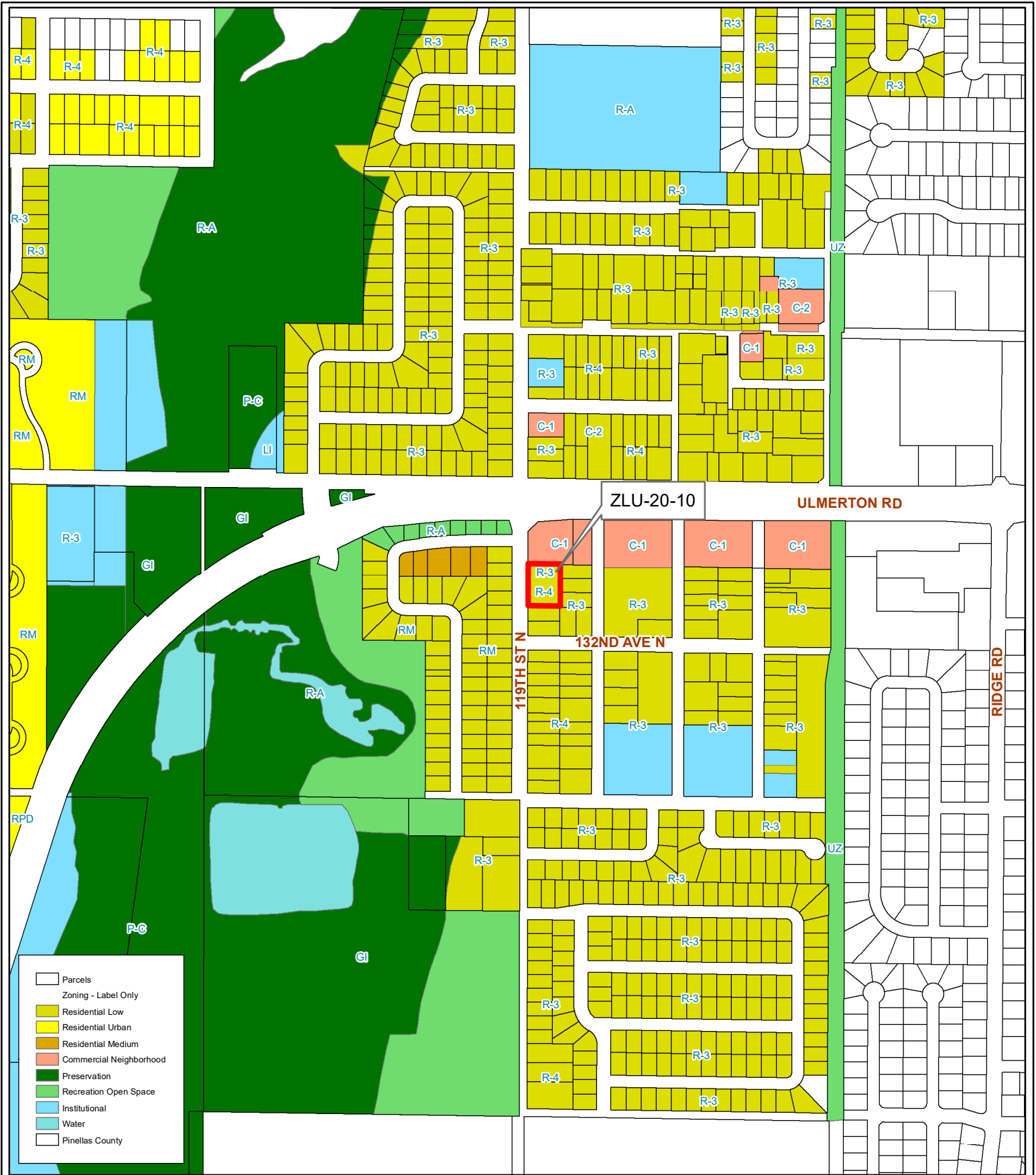
09/30/15/00000/120/2200

Prepared by: Pinellas County Planning Department



Date: 9/23/2020

1 inch = 4.5 miles



**ZLU-20-10**  
**Current Land Use & Zoning**

**Zoning** From: R-3, Single Family Residential (0.11 acre) and R-4, One, Two & Three Family Residential (0.44 acre)  
 To: RM, Multiple-Family Residential (0.55 acre)

**Land Use** From: Residential Low  
 To: Residential Low Medium (0.55 acre)



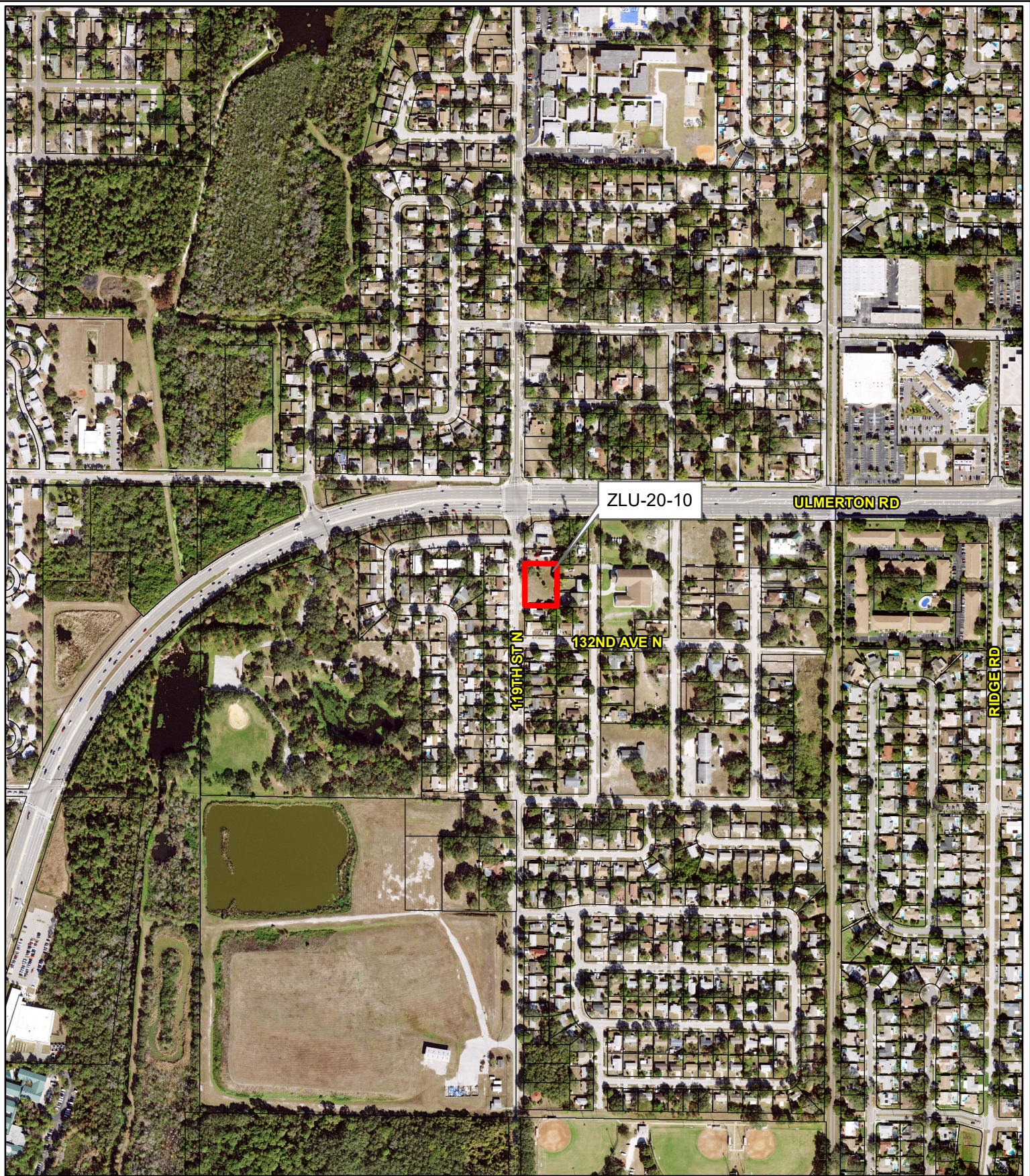
09/30/15/00000/120/2200

Prepared by: Pinellas County Planning Department



Date: 9/23/2020

1 inch = 0.1 miles



**ZLU-20-10**

**Aerial Map**

**Zoning** From: R-3, Single Family Residential (0.11 acre) and R-4, One, Two & Three Family Residential (0.44 acre)  
 To: RM, Multiple-Family Residential (0.55 acre)

**Land Use** From: Residential Low  
 To: Residential Low Medium (0.55 acre)

09/30/15/00000/120/2200

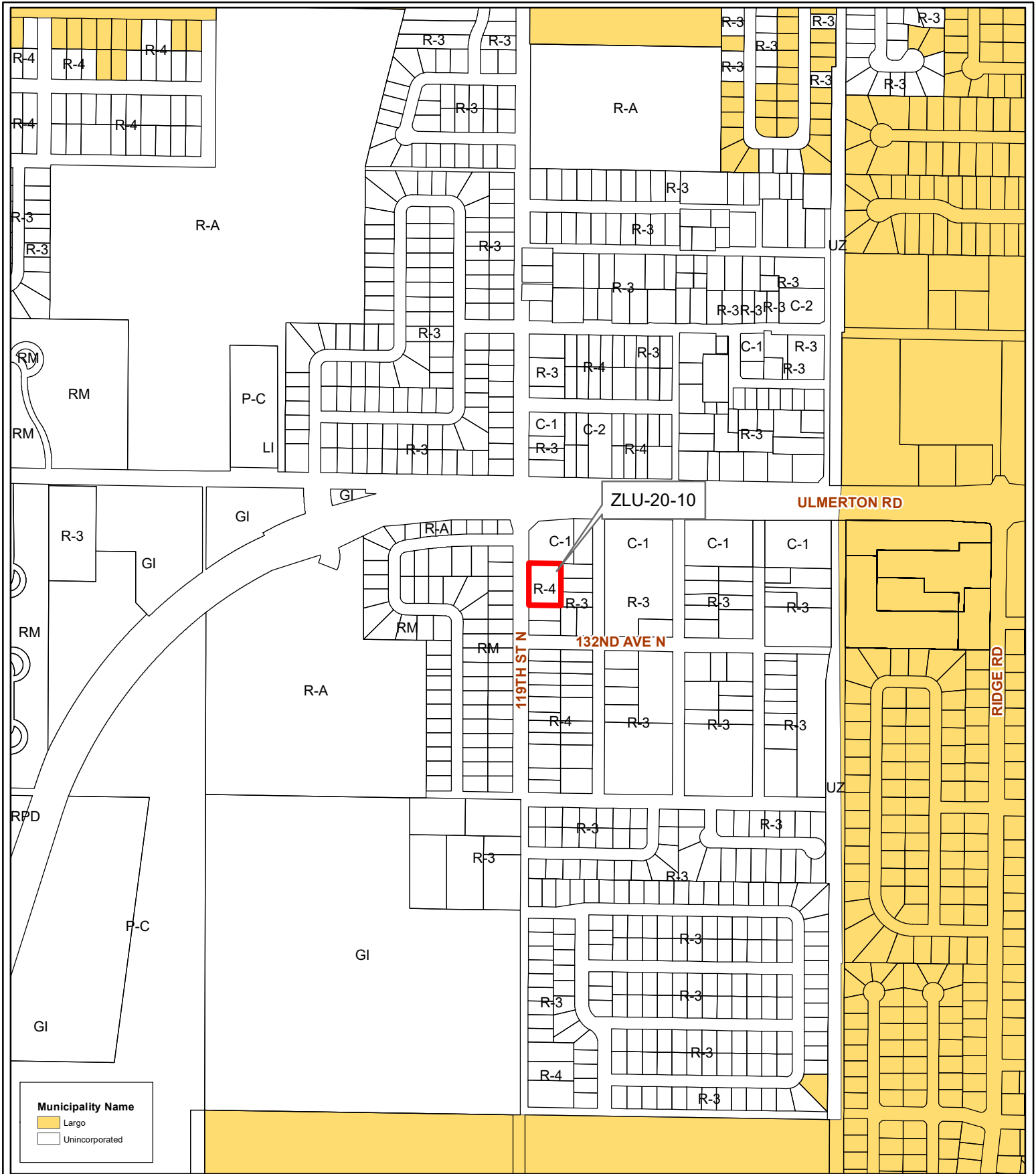
Prepared by: Pinellas County Planning Department



Date: 9/23/2020



1 inch = 0.1 miles



# ZLU-20-10

## Municipal Map

**Zoning**  
**From:** R-3, Single Family Residential (0.11 acre) and R-4, One, Two & Three Family Residential (0.44 acre)  
**To:** RM, Multiple-Family Residential (0.55 acre)

**Land Use**  
**From:** Residential Low  
**To:** Residential Low Medium (0.55 acre)

09/30/15/00000/120/2200

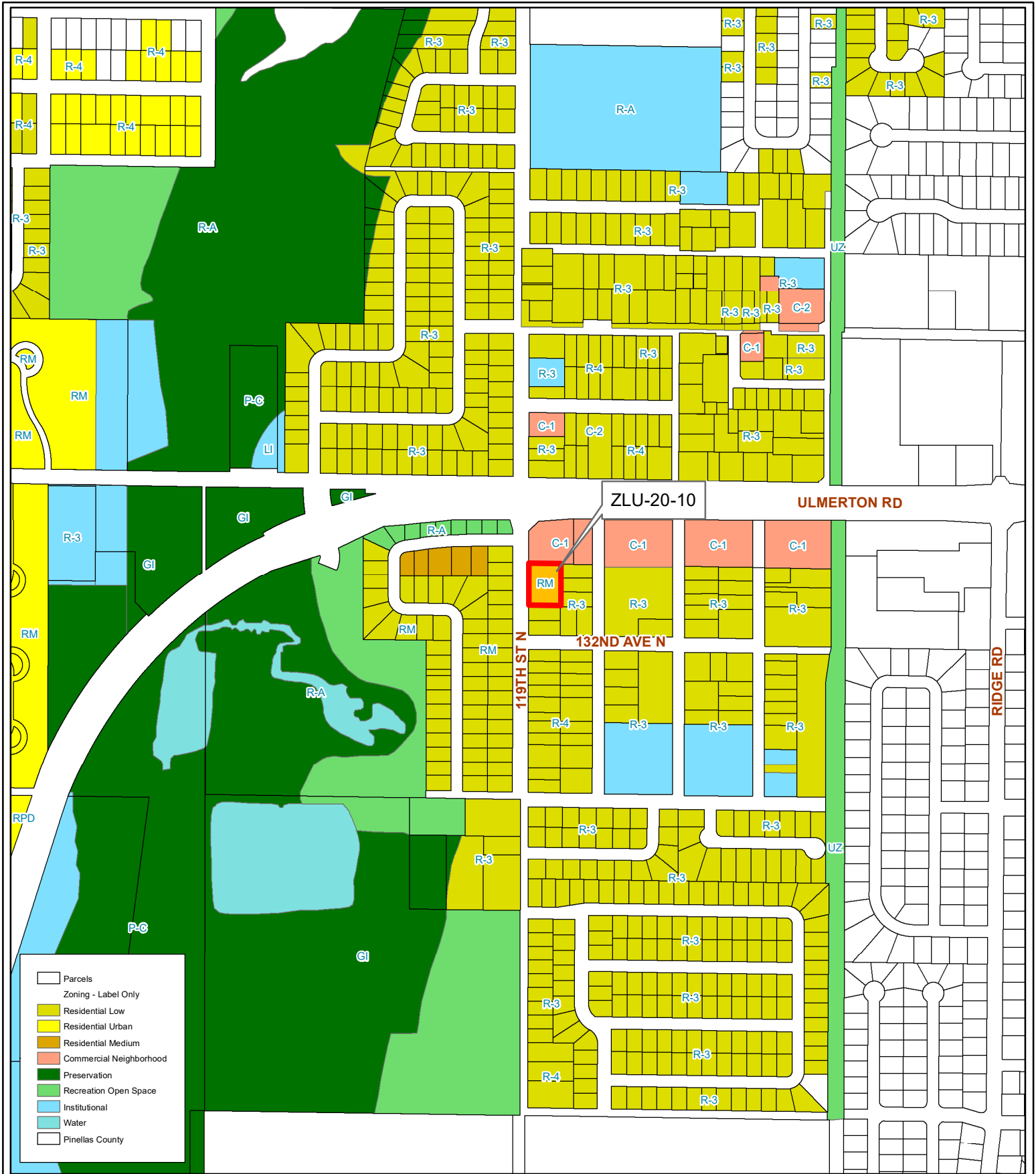
Prepared by: Pinellas County Planning Department



Date: 9/23/2020



1 inch = 0.1 miles



□ Parcels  
 Zoning - Label Only  
 ■ Residential Low  
 ■ Residential Urban  
 ■ Residential Medium  
 ■ Commercial Neighborhood  
 ■ Preservation  
 ■ Recreation Open Space  
 ■ Institutional  
 ■ Water  
 ■ Pinellas County

**ZLU-20-10**  
**Proposed Land Use & Zoning**

**Zoning** From: R-3, Single Family Residential (0.11 acre) and R-4, One, Two & Three Family Residential (0.44 acre)  
 To: RM, Multiple-Family Residential (0.55 acre)  
**Land Use** From: Residential Low  
 To: Residential Low Medium (0.55 acre)



09/30/15/00000/120/2200

Prepared by: Pinellas County Planning Department



Date: 9/23/2020

1 inch = 0.1 miles