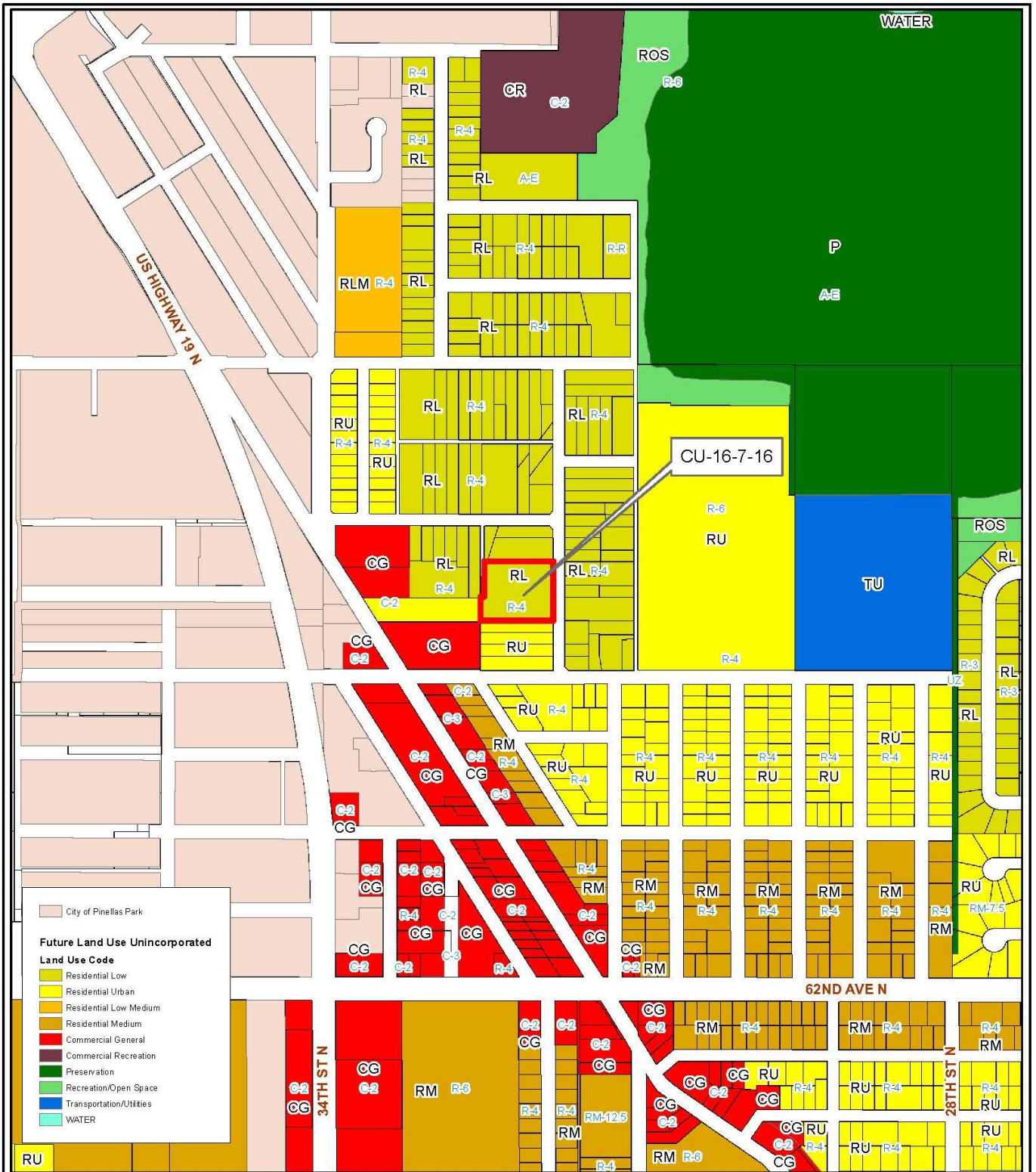


Proposed Conditional Use (CU-16-7-16)

Board of County Commissioners
August 23, 2016

Request

- Conditional Use to allow for the expansion of a utility substation in an R-4 zone
- Applicant:
 - Duke Energy
- Location:
 - 6700 32nd Street North in Lealman
- Size:
 - 1.7 acres
- Future Land Use Map:
 - Residential Low
- Existing substation constructed in 1987
 - Approved via a Special Exception



City of Pinellas Park

Future Land Use Unincorporated Land Use Code

- Residential Low
- Residential Urban
- Residential Low Medium
- Residential Medium
- Commercial General
- Commercial Recreation
- Preservation
- Recreation/Open Space
- Transportation/Utilities
- WATER

LAND USE & ZONING
CU-16-7-16

A Conditional Use for the expansion of a utility substation.

35/30/16/03240/000/0300

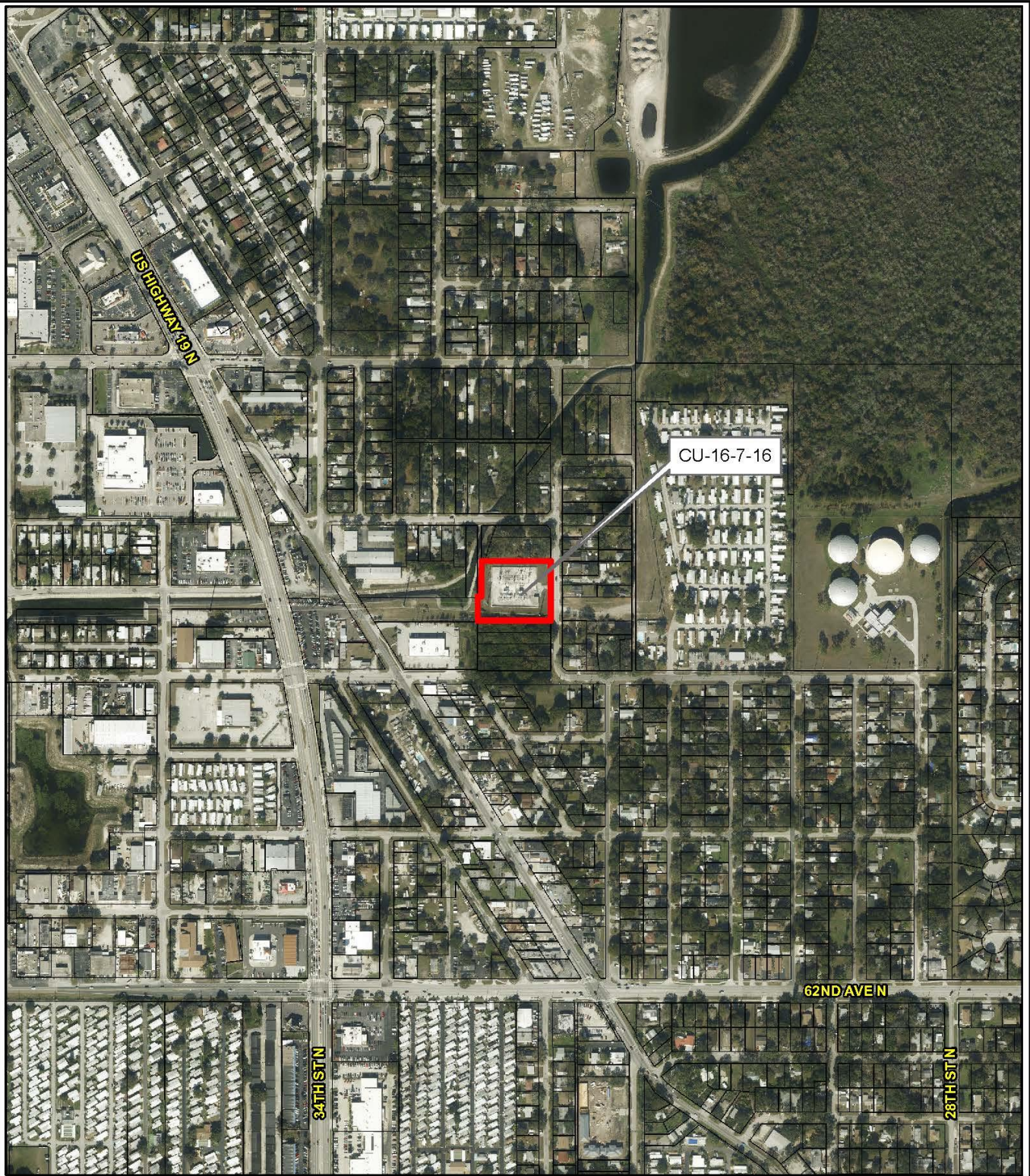
Prepared by: Pinellas County Planning Department



Date: 5/31/2016



1 inch = 0.1 miles



AERIAL

CU-16-7-16

A Conditional Use for the expansion of a utility substation.

35/30/16/03240/000/0300

Prepared by: Pinellas County Planning Department



Date: 5/27/2016



1 inch = 0.1 miles

Staff Findings

- Existing substation has been in place for almost 30 years
- The proposal meets the General Standards for conditional uses
- The proposal is consistent with the Pinellas County Comprehensive Plan



Staff Recommendation

- Approval, with the following conditions:
 1. Site plan review, as deemed appropriate by staff.
 2. Site development shall be in general conformance with the associated concept plan.
 3. Any substantial changes to the conditions listed shall require approval of the Board of County Commissioners.
 4. In the event any of the above conditions are not met or the conditional use becomes a nuisance, the Board of County Commissioners may rescind approval of the conditional use.
- Local Planning Agency
 - Recommended approval (6-0 vote)