

March 16, 2026

Tom Washburn, P.E.
Transportation Division Director

Hazard Mitigation Grant Program
ID# 4828-PID-150688
Pinellas County, Barrier Islands Traffic Signals, Infrastructure Retrofit
Budget Narrative

To prevent future flooding, the proposal recommends permanently mounting the traffic signal cabinet at a higher, yet practical, elevation. The suggested foundation height is 4 feet 6 inches (reinforced concrete), and the pole mounting height is 6 feet (prestressed concrete). Three cabinet mounting options are being proposed:

- **Option 1: Tall Foundation (4'6") for Base-Mounted Traffic Signal and UPS Cabinets**

This option references FDOT Index 676-010, Sheet 4 for tall base mounts.

https://fdotwww.blob.core.windows.net/sitefinity/docs/default-source/design/standardplans/2026/idx/676-010.pdf?sfvrsn=a7389c83_1

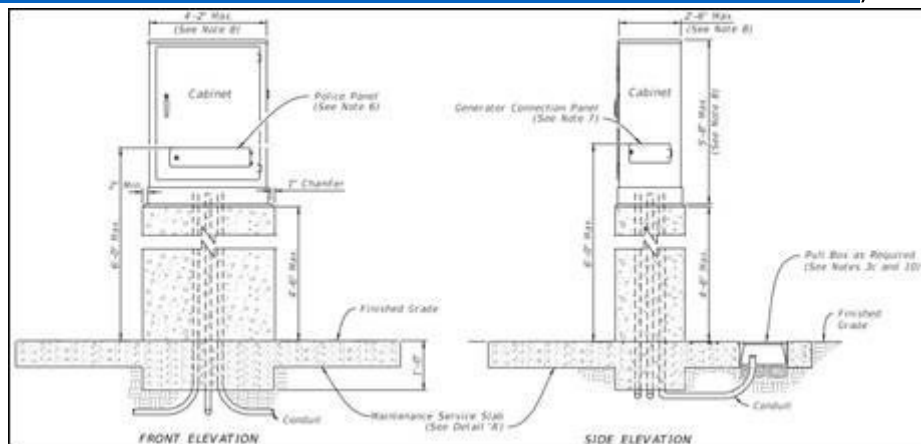


Figure 1. FDOT Index 676-010

To ensure technician accessibility, a landing/work area adjacent to the cabinet is proposed. Plan and elevation views are shown in Figures 2 and 3. *Note: The UPS cabinet is shown for illustrative purposes only and is not included in the estimate.*

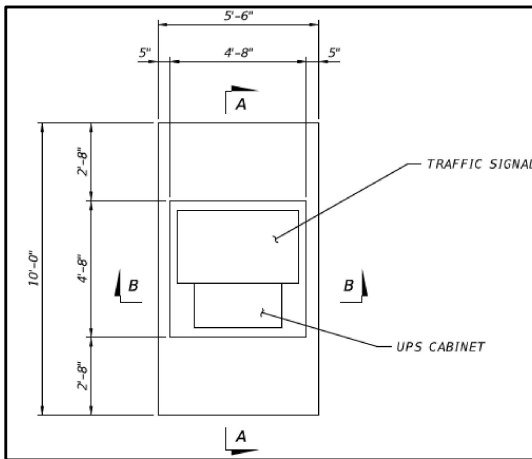


Figure 2. Option 1 Plan View

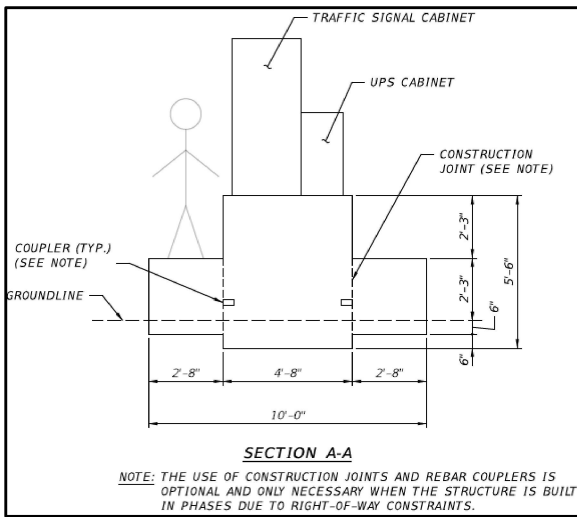


Figure 3. Option 1 Elevation View

- **Option 2: “Taj Mahal” Foundation for Base-Mounted Cabinets**

This option is modeled after the installation at US 19 and MLK in Tarpon Springs.



Figure 4. US 19 at MLK Tarpon Springs Taj Mahal

Plan and elevation views are shown in Figures 5 and 6. Note: The UPS cabinet is shown for illustrative purposes only and is not included in the estimate.

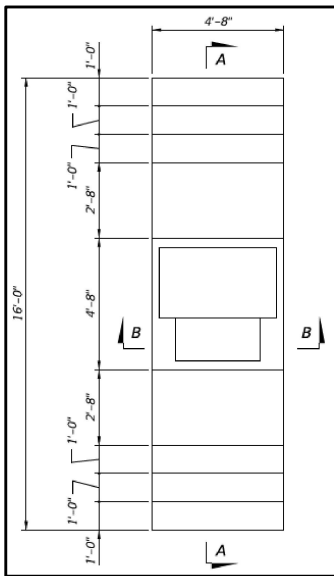


Figure 5. Option 2 Plan View

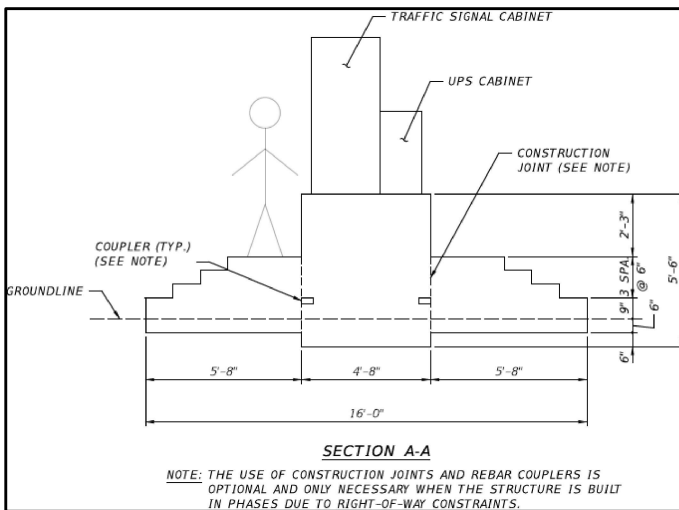


Figure 6. Option 2 Elevation View

- **Option 3: Pole-Mounted Cabinet**

Although there is no FDOT Approved Product List (APL) pole-mounted traffic signal cabinets, FDOT Index 676-010 illustrates a pole-mounted installation.

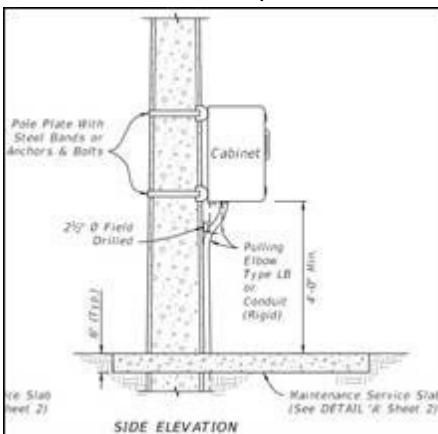


Figure 7. FDOT Index 676-010 Pole Mount

- See Index 676-010, Sheet 1 for pole mount. (https://fdotwww.blob.core.windows.net/sitefinity/docs/default-source/design/standardplans/2026/idx/676-010.pdf?sfvrsn=a7389c83_1).
- See Index 641-010 for strain poles. (https://fdotwww.blob.core.windows.net/sitefinity/docs/default-source/design/standardplans/2026/idx/641-010.pdf?sfvrsn=58b68976_1).
- See SPI 641-010 for minimum pole height (20 FEET). (https://fdotwww.blob.core.windows.net/sitefinity/docs/default-source/design/standardplans/2026/spi/spi-641-010.pdf?sfvrsn=6c5f4ca4_3)

The traffic signal cabinet will be mounted on one side of the pole using stainless steel straps, with the UPS cabinet on the opposite side. Since the cabinet bottom will be 6 feet above grade, the maintenance service slab must be raised by 3 feet. Plan and elevation views are shown in Figures 8 and 9. *Note: The UPS cabinet is shown for illustrative purposes only and is not included in the estimate.*

Pinellas County proposes using a pole-mounted cabinet manufactured by Econolite, weighing approximately 80 lbs. and costing \$21,000.

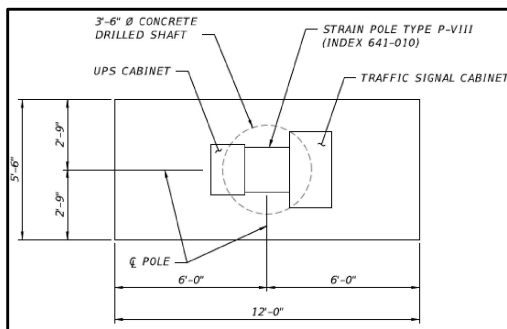


Figure 8. Option 3 Plan View

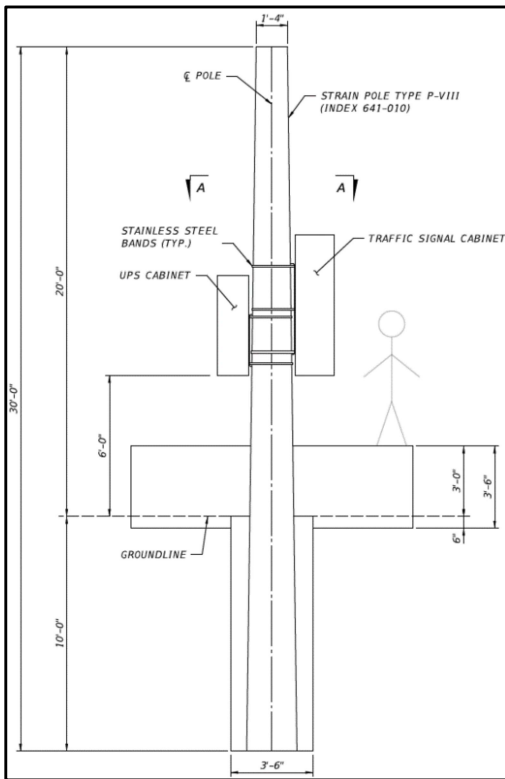


Figure 9. Option 3 Elevation View

Project Estimate and Assumptions

The estimate is based on the latest FDOT Area 08 historical costs. Key constructability assumptions include:

- A preliminary design document guided the selection of the preferred option at each intersection, based on right-of-way, accessibility, and cost.
- New cabinets will be installed at all intersections. The existing cabinet will remain operational during installation.
- The existing controller will be relocated to the new cabinet, and intersection rewiring will connect existing signal heads and roadside equipment to the new cabinet.
- The existing cabinet and foundation will be removed.
- All signal, Opticom, video detector, CCTV/RSU Cat-6, power service, and fiber optic cables will be replaced due to insufficient length for the new cabinet location/elevation.
- Controller timings will remain unchanged.
- Pull boxes encased in sidewalks will be replaced, with sidewalk repairs as needed. Pull boxes in grass or dirt will be reused.

All three options use Concrete Class IV (8.3–8.8 cubic yards) and reinforcing steel (1,235–1,284 lbs). Option 3 includes a Type P-VIII prestressed concrete pole.

Note: Survey, mobilization, maintenance of traffic (MOT), contingency, and unknowns are not included in the estimate.

Site Specific Budgets

1. Alt 19 and MLK Dr, Tarpon Springs

Materials (furnish and install)

- Concrete sidewalk and driveways, 6" thick: 5 SY @ \$678.38
- Conduit, F&I, open trench: 200 LF @ \$4,862.50
- Signal cable – new or reconstructed intersection, F&I: 1 EA @ \$15,713.66
- Multi-Conductor Communication Cable, Furnish & Install, Composite: 400 LF @ \$4,500.00
- Electrical Service Wire, F&I: 50 LF @ \$1,376.25
- Option 1: Traffic Signal Controller Cabinet, F&I W/Riser, Cabinet W/O Controller, NEMA Type/Size 6, 44" W X 52" H X 24" D: 1 EA @ \$72,104.10

Labor

- Traffic Control Officer: 8 hours @ \$890.80
- Removal of existing concrete: 6 SY @ \$325.35
- Pavers, architectural, removal existing and reinstall: 4 SY @ \$669.30
- ITSFM Location documentation - intersection: 1 EA @ \$3,383.75
- Signal cable, remove – intersection: 1 EA @ \$2,676.70
- Multi-Conductor Communication Cable, Remove: 400 LF @ \$415.00
- Pull & Splice Vault, Modify: 4 EA @ \$3,653.94
- Signal Priority & Preemption System, Relocate: 1 EA @ \$2,696.63
- Traffic Controller, Relocate - Without Cabinet: 1 EA @ \$3,809.41
- Traffic Signal Controller Cabinet, Remove: 1 EA @ \$2,368.76

Fees

- Design, Survey, and Post Design Fees: 1 EA @ \$18,060

2. Alt 19 and Palm Blvd, Dunedin

Materials (furnish and install)

- Conduit, F&I, open trench: 250 LF @ \$6,078.13
- Fiber optic cable, F&I, underground, 2-12 fibers: 100 LF @ \$631.25
- Fiber Optic Connection Hardware, F&I, Buffer Tube Fan-Out Kit: 1 EA @ \$132.44
- Fiber Optic Connection Hardware, F&I, Preterminated Patch Panel: 1 EA @ \$3,124.34
- Fiber Optic Connection Hardware, F&I, Connector Panel: 1 EA @ \$275.71
- Fiber Optic Connection Hardware, Adjust/Modify Splice Enclosure: 1 EA @ \$1,365.50
- Multi-Conductor Communication Cable, Furnish & Install, Composite: 200 LF @ \$2,250.00
- Electrical Service Wire, F&I: 50 LF @ \$1,376.25
- Option 1: Traffic Signal Controller Cabinet, F&I W/Riser, Cabinet W/O Controller, NEMA Type/Size 6, 44" W X 52" H X 24" D: 1 EA @ \$72,104.10

Labor

- Traffic Control Officer: 8 HR @ \$890.80
- Removal of existing concrete: 2 SY @ \$108.45
- ITSFM Location documentation – intersection: 1 EA @ \$3,383.75
- Replace route marker for existing conduit: 1 EA @ \$367.28
- Signal cable, remove – intersection: 1 PI @ \$2,676.70
- Fiber optic connection, install, splice: 4 EA @ \$330.15

Fiber Optic Cable locator: 1 DA @ \$372.28
Multi-Conductor Communication Cable, Remove: 200 LF @ \$207.50
Pull & Splice Vault, Modify: 5 EA @ \$4,567.42
Signal Priority & Preemption System, Relocate: 1 EA @ \$2,696.63
Traffic Controller, Relocate - Without Cabinet: 1 EA @ \$3,809.41
Traffic Signal Controller Cabinet, Remove: 1 EA @ \$2,368.76
Managed Ethernet Field Switch, Relocate: 1 EA @ \$885.88

Fees

Design, Survey, and Post Design Fees: 1 EA @ \$18,456

3. Alt 19 and Michigan Blvd, Dunedin

Materials (furnish and install)

Conduit, F&I, open trench: 250 LF @ \$6,078.13
Signal cable – new or reconstructed intersection, F&I: 1 PI @ \$2,676.70
Fiber optic cable, F&I, underground, 2-12 fibers: 100 LF @ \$631.25
Fiber Optic Connection Hardware, F&I, Buffer Tube Fan-Out Kit: 1 EA @ \$132.44
Fiber Optic Connection Hardware, F&I, Preterminated Patch Panel: 1 EA @ \$3,124.34
Fiber Optic Connection Hardware, F&I, Connector Panel: 1 EA @ \$275.71
Fiber Optic Connection Hardware, Adjust/Modify Splice Enclosure: 1 EA @ \$1,365.50
Multi-Conductor Communication Cable, Furnish & Install, Composite: 200 LF @ \$2,250.00
Electrical Service Wire, F&I: 50 LF @ \$1,376.25
Option 1: Traffic Signal Controller Cabinet, F&I W/Riser, Cabinet W/O Controller, NEMA Type/Size 6, 44" W X 52" H X 24" D: 1 EA @ \$72,104.10

Labor

Traffic Control Officer: 8 HR @ \$890,80
Removal of existing concrete: 2 SY @ \$108.45
ITSFM Location documentation – intersection: 1 EA @ \$3,383.75
Replace route marker for existing conduit: 1 EA @ \$367.28
Signal cable, remove – intersection: 1 PI @ \$2,676.70
Fiber optic connection, install, splice: 4 EA @ \$330.15
Fiber Optic Cable locator: 1 EA @ \$372.28
Multi-Conductor Communication Cable, Remove: 200 LF @ \$207.50
Pull & Splice Vault, Modify: 5 EA @ \$4,567.42
Signal Priority & Preemption System, Relocate: 1 EA @ \$2,696.63
Traffic Controller, Relocate - Without Cabinet: 1 EA @ \$3,809.41
Traffic Signal Controller Cabinet, Remove: 1 EA @ \$2,368.76
Managed Ethernet Field Switch, Relocate: 1 EA @ \$885.88
Uninterruptible Power Supply, Remove - Pole/Cabinet Remains: 1 EA @ \$839.75
Traffic Signal Controller Cabinet, Remove: 1 EA @ \$2,368.76

Fees

Design, Survey, and Post Design Fees: 1 EA @ \$19,339

4. Gulf Blvd and Belleair Beach Cswy, Belleair Beach

Materials (furnish and install)

Conduit, F&I, open trench: 150 LF @ \$3,646.88
Signal cable – new or reconstructed intersection, F&I: 1 PI @ \$15,713.66
Fiber optic cable, F&I, underground, 2-12 fibers: 100 LF @ \$631.25
Fiber Optic Connection Hardware, F&I, Buffer Tube Fan-Out Kit: 1 EA @ \$132.44
Fiber Optic Connection Hardware, F&I, Preterminated Patch Panel: 1 EA @ \$3,124.34
Fiber Optic Connection Hardware, F&I, Connector Panel: 1 EA @ \$275.71
Fiber Optic Connection Hardware, Adjust/Modify Splice Enclosure: 1 EA @ \$1,365.50
Multi-Conductor Communication Cable, Furnish & Install, Composite: 1,000 LF @ \$11,250.00
Electrical Service Wire, F&I: 50 LF @ \$1,376.25
Option 1: Traffic Signal Controller Cabinet, F&I W/Riser, Cabinet W/O Controller, NEMA Type/Size 6, 44" W X 52" H X 24" D: 1 EA @ \$72,104.10

Labor

Traffic Control Officer: 8 HR @ \$890.80
Removal of existing concrete: 2 SY @ \$108.45
ITSFM Location documentation – intersection: 1 EA @ \$3,383.75
Replace route marker for existing conduit: 1 EA @ \$367.28
Signal cable, remove – intersection: 1 EA @ \$2,676.70
Fiber optic connection, install, splice: 4 EA @ \$330.15
Fiber Optic Cable locator: 1 DA @ \$372.28
Multi-Conductor Communication Cable, Remove: 500 LF @ \$518.75
Pull & Splice Vault, Modify: 3 EA @ \$2,740.45
Vehicle Detection System - Microwave, Relocate Cabinet Equipment: 1 EA @ \$2,695.31
Signal Priority & Preemption System, Relocate: 1 EA @ \$2,696.63
Traffic Controller, Relocate - Without Cabinet: 1 EA @ \$3,809.41
Traffic Signal Controller Cabinet, Remove: 1 EA @ \$2,368.76
Managed Ethernet Field Switch, Relocate: 1 EA @ \$885.88
Uninterruptible Power Supply, Remove - Pole/Cabinet Remains: 1 EA @ \$839.75
Traffic Signal Controller Cabinet, Remove: 1 EA @ \$2,368.76

Fees

Design, Survey, and Post Design Fees: 1 EA @ \$20,650

5. Gulf Blvd and Walsingham Rd, Indian Rocks Beach

Materials (furnish and install)

Conduit, F&I, open trench: 150 LF @ \$3,646.88
Signal cable – new or reconstructed intersection, F&I: 1 PI @ \$15,713.66
Fiber optic cable, F&I, underground, 2-12 fibers: 100 LF @ \$631.25
Fiber Optic Connection Hardware, F&I, Buffer Tube Fan-Out Kit: 1 EA @ \$132.44
Fiber Optic Connection Hardware, F&I, Preterminated Patch Panel: 1 EA @ \$3,124.34
Fiber Optic Connection Hardware, F&I, Connector Panel: 1 EA @ \$275.71
Fiber Optic Connection Hardware, Adjust/Modify Splice Enclosure: 1 EA @ \$1,365.50
Multi-Conductor Communication Cable, Furnish & Install, Cat 6: 150 LF @ \$765.00

Electrical Service Wire, F&I: 50 LF @ \$1,376.25

Option 1: Traffic Signal Controller Cabinet, F&I W/Riser, Cabinet W/O Controller, NEMA Type/Size 6, 44" W X 52" H X 24" D: 1 EA @ \$72,104.10

Labor

Traffic Control Officer: 8 HR @ \$890.80

Removal of existing concrete: 2 SY @ \$108.45

ITSFM Location documentation – intersection: 1 EA @ \$3,383.75

Replace route marker for existing conduit: 1 EA @ \$367.28

Signal cable, remove – intersection: 1 PI @ \$2,676.70

Fiber optic connection, install, splice: 4 EA @ \$330.15

Fiber Optic Cable locator: 1 DA @ \$372.28

Multi-Conductor Communication Cable, Remove: 100 LF @ \$103.75

Pull & Splice Vault, Modify: 3 EA @ \$2,740.45

Vehicle Detection System - Video, Relocate Cabinet Equipment: 1 EA @ \$2,695.31

Signal Priority & Preemption System, Relocate: 1 EA @ \$2,696.63

Traffic Controller, Relocate - Without Cabinet: 1 EA @ \$3,809.41

Traffic Signal Controller Cabinet, Remove: 1 EA @ \$2,368.76

Managed Ethernet Field Switch, Relocate: 1 EA @ \$885.88

Uninterruptible Power Supply, Remove - Pole/Cabinet Remains: 1 EA @ \$839.75

Traffic Signal Controller Cabinet, Remove: 1 EA @ \$2,368.76

Fees

Design, Survey, and Post Design Fees: 1 EA @ \$18,866

6. Gulf Blvd and Park Blvd, Indian Shores

Materials (furnish and install)

Conduit, F&I, open trench: 200 LF @ \$4,862.50

Signal cable – new or reconstructed intersection, F&I: 1 PI @ \$15,713.66

Fiber optic cable, F&I, underground, 2-12 fibers: 100 LF @ \$631.25

Fiber Optic Connection Hardware, F&I, Buffer Tube Fan-Out Kit: 1 EA @ \$132.44

Fiber Optic Connection Hardware, F&I, Preterminated Patch Panel: 1 EA @ \$3,124.34

Fiber Optic Connection Hardware, F&I, Connector Panel: 1 EA @ \$275.71

Fiber Optic Connection Hardware, Adjust/Modify Splice Enclosure: 1 EA @ \$1,365.50

Electrical Service Wire, F&I: 50 LF @ \$1,376.25

Option 2: Traffic Signal Controller Cabinet, F&I W/Taj Mahal, Cabinet W/O Controller, NEMA Type/Size 6, 44" W X 52" H X 24" D: 1 EA @ \$74,138.95

Labor

Traffic Control Officer: 8 HR @ \$890.80

Removal of existing concrete: 2 SY @ \$108.45

ITSFM Location documentation – intersection: 1 EA @ \$3,383.75

Replace route marker for existing conduit: 1 EA @ \$367.28

Signal cable, remove – intersection: 1 PI @ \$2,676.70

Fiber optic connection, install, splice: 4 EA @ \$330.15

Fiber Optic Cable locator: 1 DA @ \$372.28
Pull & Splice Vault, Modify: 5 EA @ \$4,567.42
Vehicle Detection System - Video, Relocate Cabinet Equipment: 1 EA @ \$2,695.31
Traffic Controller, Relocate - Without Cabinet: 1 EA @ \$3,809.41
Traffic Signal Controller Cabinet, Remove: 1 EA @ \$2,368.76
Managed Ethernet Field Switch, Relocate: 1 EA @ \$885.88
Uninterruptible Power Supply, Remove - Pole/Cabinet Remains: 1 EA @ \$839.75
Traffic Signal Controller Cabinet, Remove: 1 EA @ \$2,368.76

Fees

Design, Survey, and Post Design Fees: 1 EA @ \$19,093

7. Gulf Blvd and 153rd Ave, Madeira Beach

Materials (furnish and install)

Concrete sidewalk and driveways, 6" thick: 8 SY @ \$1,085.40
Conduit, F&I, open trench: 150 LF @ \$3,646.88
Signal cable – new or reconstructed intersection, F&I: 1 PI @ \$15,713.66
Fiber optic cable, F&I, underground, 2-12 fibers: 50 LF @ \$1,376.25
Electrical Service Wire, F&I: 1 EA @ \$608.63
Loop Detector, Inductive, F&I, Type 10: 1 EA @ \$608.63
Option 3: Traffic Signal Controller Cabinet, Furnish & Install Without Controller, NEMA Cabinet - 334 W/Sunshield, 30" W X 30" H X 16" D, Pole Mount: 1 EA @ \$117,539.45

Labor

Traffic Control Officer: 8 HR @ \$890.80
Removal of existing concrete: 2 SY @ \$108.45
ITSFM Location documentation – intersection: 1 EA @ \$3,383.75
Signal cable, remove – intersection: 1 PI @ \$2,676.70
Pull & Splice Vault, Modify: 5 EA @ \$4,567.42
Signal Priority & Preemption System, Relocate: 1 EA @ \$2,696.63
Traffic Controller, Relocate - Without Cabinet: 1 EA @ \$3,809.41
Traffic Signal Controller Cabinet, Remove: 1 EA @ \$2,368.76
Uninterruptible Power Supply, Remove - Pole/Cabinet Remains: 1 EA @ \$839.75
Traffic Signal Controller Cabinet, Remove: 1 EA @ \$2,368.76

Fees

Design, Survey, and Post Design Fees: 1 EA @ \$24,643

8. Tom Stuart Cswy and Duhme Rd, Madeira Beach

Materials (furnish and install)

Concrete sidewalk and driveways, 6" thick: 4 SY @ \$542.70
Conduit, F&I, open trench: 160 LF @ \$3,890.00
Signal cable – new or reconstructed intersection, F&I: 1 PI @ \$15,713.66
Fiber optic cable, F&I, underground, 2-12 fibers: 100 LF @ \$631.25
Fiber Optic Connection Hardware, F&I, Buffer Tube Fan-Out Kit: 1 EA @ \$132.44
Fiber Optic Connection Hardware, F&I, Preterminated Patch Panel: 1 EA @ \$3,124.34

Fiber Optic Connection Hardware, F&I, Connector Panel: 1 EA @ \$275.71
Fiber Optic Connection Hardware, Adjust/Modify Splice Enclosure: 1 EA @ \$1,365.50
Multi-Conductor Communication Cable, Furnish & Install, Cat 6: 100 LF @ \$510.00
Multi-Conductor Communication Cable, Furnish & Install, Composite: 200 LF @ \$2,250.00
Pull & Splice Box, F&I, 13" X 24" Cover Size: 3 EA @ \$6,208.69
Electrical Service Wire, F&I: 50 LF @ \$1,376.25
Loop Detector, Inductive, F&I, Type 10: 5 EA @ \$3,043.13
Option 1: Traffic Signal Controller Cabinet, F&I W/Riser, Cabinet W/O Controller, NEMA Type/Size 6, 44" W X 52" H X 24" D: 1 EA @ \$72,104.10

Labor

Traffic Control Officer: 8 HR @ \$890.80
Removal of existing concrete: 8 SY @ \$433.80
ITSFM Location documentation – intersection: 1 EA @ \$3,383.75
Replace route marker for existing conduit: 1 EA @ \$367.28
Signal cable, remove – intersection: 1 PI @ \$2,676.70
Fiber optic connection, install, splice: 4 EA @ \$330.15
Fiber Optic Cable locator 1 DA: 1 EA @ \$372.28
Multi-Conductor Communication Cable, Remove: 300 LF @ \$311.25
Pull & Splice Vault, Remove: 3 EA @ \$1,696.88
Pull & Splice Vault, Modify: 1 EA @ \$913.48
Vehicle Detection System - AVI, Bluetooth Relocate, Cabinet Equipment: 1 EA @ \$825.00
Signal Priority & Preemption System, Relocate: 1 EA @ \$2,696.63
Traffic Controller, Relocate - Without Cabinet: 1 EA @ \$3,809.41
Traffic Signal Controller Cabinet, Remove: 1 EA @ \$2,368.76
Managed Ethernet Field Switch, Relocate: 1 EA @ \$885.88
Uninterruptible Power Supply, Remove - Pole/Cabinet Remains: 1 EA @ \$839.75
Traffic Signal Controller Cabinet, Remove: 1 EA @ \$2,368.76

Fees

Design, Survey, and Post Design Fees: 1 EA @ \$20,451

9. Gulf Blvd and Madeira Way, Madeira Beach

Materials (furnish and install)

Conduit, F&I, open trench: 150 LF @ \$3,646.88
Signal cable – new or reconstructed intersection, F&I: 1 PI @ \$15,713.66
Multi-Conductor Communication Cable, Furnish & Install, Composite: 200 LF @ \$2,250.00
Electrical Service Wire, F&I: 50 LF @ \$1,376.25
Loop Detector, Inductive, F&I, Type 10: 5 EA @ \$3,043.13
Option 2: Traffic Signal Controller Cabinet, F&I W/Taj Mahal, Cabinet W/O Controller, NEMA Type/Size 6, 44" W X 52" H X 24" D: 1 EA @ \$74,138.95

Labor

Traffic Control Officer: 8 HR @ \$890.80
Removal of existing concrete: 2 SY @ \$108.45
ITSFM Location documentation – intersection: 1 EA @ \$3,383.75
Signal cable, remove – intersection: 1 PI @ \$2,676.70

Multi-Conductor Communication Cable, Remove: 200 LF @ \$207.50
Pull & Splice Vault, Modify: 3 EA @ \$2,740.45
Signal Priority & Preemption System, Relocate: 1 EA @ \$2,696.63
Traffic Controller, Relocate - Without Cabinet: 1 EA @ \$3,809.41
Traffic Signal Controller Cabinet, Remove: 1 EA @ \$2,368.76

Fees

Design, Survey, and Post Design Fees: 1 EA @ \$17,858

10. 150th Ave and Madeira Way, Madeira Beach

Materials (furnish and install) @ \$124,540.86

Conduit, F&I, open trench: 200 LF @ \$4,862.50
Signal cable – new or reconstructed intersection, F&I: 1 PI @ \$15,713.66
Fiber optic cable, F&I, underground, 2-12 fibers: 100 LF @ \$631.25
Fiber Optic Connection Hardware, F&I, Buffer Tube Fan-Out Kit: 1 EA @ \$134.44
Fiber Optic Connection Hardware, F&I, Preterminated Patch Panel: 1 EA @ \$3,124.34
Fiber Optic Connection Hardware, F&I, Connector Panel: 1 EA @ \$275.71
Fiber Optic Connection Hardware, Adjust/Modify Splice Enclosure: 1 EA @ \$1,365.50
Multi-Conductor Communication Cable, Furnish & Install, Composite: 200 LF @ \$2,250.00
Pull & Splice Box, F&I, 13" X 24" Cover Size: 3 EA @ \$6,208.69
Pull & Splice Vault, F&I, 30" X 60" Rectangular Cover Size: 1 EA @ \$8,663.26
Electrical Service Wire, F&I: 50 LF @ \$1,376.25
Loop Detector, Inductive, F&I, Type 10: 5 EA @ \$3,043.13
Option 1: Traffic Signal Controller Cabinet, F&I W/Riser, Cabinet W/O Controller, NEMA Type/Size 6, 44" W X 52" H X 24" D: 1 EA @ \$72,104.10

Labor

Traffic Control Officer: 8 HR @ \$890.80
Removal of existing concrete: 8 SY @ \$433.80
Pavers, architectural, removal existing and reinstall: 2 SY @ \$334.65
ITSFM Location documentation – intersection: 1 EA @ \$3,383.75
Replace route marker for existing conduit: 1 EA @ \$367.28
Signal cable, remove – intersection: 1 PI @ \$2,676.70
Fiber optic connection, install, splice: 4 EA @ \$330.15
Fiber Optic Cable locator: 1 DA \$ 372.28
Multi-Conductor Communication Cable, Remove: 200 LF @ \$207.50
Pull & Splice Vault, Modify: 2 EA @ \$1,826.97
Signal Priority & Preemption System, Relocate: 1 EA @ \$2,696.63
Traffic Controller, Relocate - Without Cabinet: 1 EA @ \$3,809.41
Traffic Signal Controller Cabinet, Remove: 1 EA @ \$2,368.76
Managed Ethernet Field Switch, Relocate: 1 EA @ \$885.88

Fees

Design, Survey, and Post Design Fees: 1 EA @ \$21,051

11. Gulf Blvd and Welch Cswy, Madeira Beach

Materials (furnish and install) @

Concrete sidewalk and driveways, 6" thick: 6 SY @ \$814.05
Conduit, F&I, open trench: 200 LF @ \$4,862.50
Signal cable – new or reconstructed intersection, F&I: 1 PI @ \$15,713.66
Fiber optic cable, F&I, underground, 2-12 fibers: 100 LF @ \$631.25
Fiber Optic Connection Hardware, F&I, Buffer Tube Fan-Out Kit: 1 EA @ \$132.44
Fiber Optic Connection Hardware, F&I, Preterminated Patch Panel: 1 EA @ \$3,124.34
Fiber Optic Connection Hardware, F&I, Connector Panel: 1 EA @ \$275.71
Fiber Optic Connection Hardware, Adjust/Modify Splice Enclosure: 1 EA @ \$1,365.50
Multi-Conductor Communication Cable, Furnish & Install, Cat 6: 100 LF @ \$510.00
Multi-Conductor Communication Cable, Furnish & Install, Composite: 400 LF @ \$4,500
Pull & Splice Box, F&I, 13" X 24" Cover Size: 2 EA @ \$4,139.13
Pull & Splice Vault, F&I, 30" X 60" Rectangular Cover Size: 1 EA @ \$8,663.26
Electrical Service Wire, F&I: 50 LF @ \$1,376.25
Option 3: Traffic Signal Controller Cabinet, Furnish & Install Without Controller, NEMA Cabinet - 334 W/Sunshield, 30" W X 30" H X 16" D, Pole Mount: 1 EA @ \$117,539.45

Labor

Traffic Control Officer: 8 HR @ \$890.80
Removal of existing concrete: 8 SY @ \$433.80
ITSFM Location documentation – intersection: 1 EA @ \$3,383.75
Replace route marker for existing conduit: 1 EA @ \$367.28
Signal cable, remove – intersection: 1 PI @ \$2,676.70
Fiber optic connection, install, splice: 4 EA @ \$330.15
Fiber Optic Cable locator: 1 DA @ \$372.28
Multi-Conductor Communication Cable, Remove: 400 LF @ \$415
Vehicle Detection System - Video, Relocate Cabinet Equipment: 1 EA @ \$2,695.31
Signal Priority & Preemption System, Relocate: 1 EA @ \$2,696.63
Traffic Controller, Relocate - Without Cabinet: 1 EA @ \$3,809.41
Traffic Signal Controller Cabinet, Remove: 1 EA @ \$2,368.76
Managed Ethernet Field Switch, Relocate: 1 EA @ \$885.88
Uninterruptible Power Supply, Remove - Pole/Cabinet Remains: 1 EA @ \$839.75
Traffic Signal Controller Cabinet, Remove: 1 EA @ \$2,368.76

Fees

Design, Survey, and Post Design Fees: 1 EA @ \$28,227

12. Gulf Blvd and 140th Ave, Madeira Beach

Materials (furnish and install)

Concrete sidewalk and driveways, 6" thick: 8 SY @ \$1,085.40
Conduit, F&I, open trench: 150 LF @ \$3,646.88
Signal cable – new or reconstructed intersection, F&I: 1 PI @ \$15,713.66
Multi-Conductor Communication Cable, Furnish & Install, Composite: 100 LF @ \$1,125.00
Pull & Splice Box, F&I, 13" X 24" Cover Size: 3 EA @ \$6,208.69

Electrical Service Wire, F&I: 50 LF @ \$1,376.25

Option 1: Traffic Signal Controller Cabinet, F&I W/Riser, Cabinet W/O Controller, NEMA Type/Size 6, 44" W X 52" H X 24" D: 1 EA @ \$72,104.10

Labor

Traffic Control Officer: 8 HR @ \$890.80

Removal of existing concrete: 10 SY @ \$542.25

ITSFM Location documentation – intersection: 1 EA @ \$3,383.75

Signal cable, remove – intersection: 1 PI @ \$2,676.70

Multi-Conductor Communication Cable, Remove: 100 LF @ \$103.75

Pull & Splice Vault, Remove: 3 EA @ \$1,696.88

Vehicle Detection System - Video, Relocate Cabinet Equipment: 1 EA @ \$2,695.31

Signal Priority & Preemption System, Relocate: 1 EA @ \$2,696.63

Traffic Controller, Relocate - Without Cabinet: 1 EA @ 3,809.41

Traffic Signal Controller Cabinet, Remove: 1 EA @ \$2,368.76

Uninterruptible Power Supply, Remove - Pole/Cabinet Remains: 1 EA @ \$839.75

Traffic Signal Controller Cabinet, Remove: 1 EA @ \$2,368.76

Fees

Design, Survey, and Post Design Fees: 1 EA @ \$18,800

13. Gulf Blvd and 117th Ave N, Treasure Island

Materials (furnish and install)

Concrete sidewalk and driveways, 6" thick: 8 SY @ \$1,085.40

Conduit, F&I, open trench: 150 LF @ \$3,646.88

Signal cable – new or reconstructed intersection, F&I: 1 PI @ \$15,713.66

Multi-Conductor Communication Cable, Furnish & Install, Cat 6: 100 LF @ \$510.00

Multi-Conductor Communication Cable, Furnish & Install, Composite: 500 LF @ \$5,625.00

Pull & Splice Box, F&I, 13" X 24" Cover Size: 3 EA @ \$6,208.69

Electrical Service Wire, F&I: 50 LF @ \$1,376.25

Option 1: Traffic Signal Controller Cabinet, F&I W/Riser, Cabinet W/O Controller, NEMA Type/Size 6, 44" W X 52" H X 24" D: 1 EA @ \$72,104.10

Labor

Traffic Control Officer: 8 HR @ \$890.80

Removal of existing concrete: 10 SY @ \$542.25

ITSFM Location documentation – intersection: 1 EA @ \$3,383.75

Signal cable, remove – intersection: 1 PI @ \$2,676.70

Multi-Conductor Communication Cable, Remove: 600 LF @ \$622.50

Pull & Splice Vault, Remove: 3 EA @ \$1,696.88

Vehicle Detection System - Video, Relocate Cabinet Equipment: 1 EA @ \$2,695.31

Signal Priority & Preemption System, Relocate: 1 EA @ \$2,696.63

Traffic Controller, Relocate - Without Cabinet: 1 EA @ \$3,809.41

Traffic Signal Controller Cabinet, Remove: 1 EA @ \$2,368.76

Fees

Design, Survey, and Post Design Fees: 1 EA @ \$19,148

14. Gulf Blvd and 112th Ave N, Treasure Island

Materials (furnish and install)

Conduit, F&I, open trench: 150 LF @ \$3,646.88
Signal cable – new or reconstructed intersection, F&I: 1 PI @ \$15,713.66
Multi-Conductor Communication Cable, Furnish & Install, Cat 6: 100 LF @ \$510.00
Multi-Conductor Communication Cable, Furnish & Install, Composite: 800 LF @ \$9,000.00
Electrical Service Wire, F&I: 50 LF @ \$1,376.25
Option 1: Traffic Signal Controller Cabinet, F&I W/Riser, Cabinet W/O Controller, NEMA Type/Size 6, 44" W X 52" H X 24" D: 1 EA @ \$72,104.10

Labor

Traffic Control Officer: 8 HR @ \$890.80
Removal of existing concrete: 2 SY @ \$108.45
ITSFM Location documentation - intersection: 1 EA @ \$3,383.75
Signal cable, remove - intersection: 1 PI @ \$2,676.70
Multi-Conductor Communication Cable, Remove: 900 LF @ \$933.75
Pull & Splice Vault, Modify: 3 EA @ \$2,740.45
Vehicle Detection System - Video, Relocate Cabinet Equipment: 1 EA @ \$2,695.31
Signal Priority & Preemption System, Relocate: 1 EA @ \$2,696.63
Traffic Controller, Relocate - Without Cabinet: 1 EA @ \$3,809.41
Traffic Signal Controller Cabinet, Remove: 1 EA @ \$2,368.76

Fees

Design, Survey, and Post Design Fees: 1 EA @ \$18,698

15. Gulf Blvd and 104th Ave, Treasure Island

Materials (furnish and install)

Conduit, F&I, open trench: 300 LF @ \$7,293.75
Signal cable – new or reconstructed intersection, F&I: 1 PI @ \$15,713.66
Multi-Conductor Communication Cable, Furnish & Install, Composite: 700 LF @ \$7,875.00
Electrical Service Wire, F&I: 50 LF @ \$1,376.25
Option 1: Traffic Signal Controller Cabinet, F&I W/Riser, Cabinet W/O Controller, NEMA Type/Size 6, 44" W X 52" H X 24" D: 1 EA @ \$72,104.10

Labor

Traffic Control Officer: 8 HR @ \$890.80
Removal of existing concrete: 2 SY @ \$108.45
ITSFM Location documentation – intersection: 1 EA @ \$3,383.75
Signal cable, remove – intersection: 1 PI @ \$2,676.70
Multi-Conductor Communication Cable, Remove: 700 LF @ \$726.25
Pull & Splice Vault, Modify: 6 EA @ \$5,480.91
Vehicle Detection System - Video, Relocate Cabinet Equipment: 1 EA @ \$2,695.31
Signal Priority & Preemption System, Relocate: 1 EA @ \$2,696.63
Traffic Controller, Relocate - Without Cabinet: 1 EA @ \$3,809.41
Traffic Signal Controller Cabinet, Remove: 1 EA @ \$2,368.76

Uninterruptible Power Supply, Remove - Pole/Cabinet Remains: 1 EA @ \$839.75

Traffic Signal Controller Cabinet, Remove: 1 EA @ \$2,368.76

Fees

Design, Survey, and Post Design Fees: 1 EA @ \$19,506

16. Pasadena Ave and Park St, South Pasadena @ \$133,682.77

Materials (furnish and install)

Conduit, F&I, open trench: 200 LF @ \$4,862.50

Signal cable – new or reconstructed intersection, F&I: 1 PI @ \$15,713.66

Fiber optic cable, F&I, underground, 2-12 fibers: 100 LF @ \$631.25

Fiber Optic Connection Hardware, F&I, Buffer Tube Fan-Out Kit: 1 EA @ \$132.44

Fiber Optic Connection Hardware, F&I, Preterminated Patch Panel: 1 EA @ \$3,124.34

Fiber Optic Connection Hardware, F&I, Connector Panel: 1 EA @ \$275.71

Fiber Optic Connection Hardware, Adjust/Modify Splice Enclosure: 1 EA @ \$1,365.50

Multi-Conductor Communication Cable, Furnish & Install, Cat 6: 100 LF @ \$510.00

Multi-Conductor Communication Cable, Furnish & Install, Composite: 400 LF @ \$4,500.00

Electrical Service Wire, F&I: 50 LF @ \$1,376.25

Option 1: Traffic Signal Controller Cabinet, F&I W/Riser, Cabinet W/O Controller, NEMA Type/Size 6, 44" W X 52" H X 24" D: 1 EA @ \$72,104.10

Labor

Traffic Control Officer: 8 HR @ \$890.80

Removal of existing concrete: 2 SY @ \$108.45

ITSFM Location documentation – intersection: 1 EA @ \$3,383.75

Signal cable, remove – intersection: 1 PI @ \$2,676.70

Fiber optic connection, install, splice: 4 EA @ \$330.15

Fiber Optic Cable locator: 1 DA @ \$372.28

Multi-Conductor Communication Cable, Remove: 500 LF @ \$518.75

Vehicle Detection System - Video, Relocate Cabinet Equipment: 1 EA \$2,695.31

Signal Priority & Preemption System, Relocate: 1 EA @ \$2,696.63

Traffic Controller, Relocate - Without Cabinet: 1 EA @ \$3,809.41

Traffic Signal Controller Cabinet, Remove: 1 EA @ \$2,368.76

Managed Ethernet Field Switch, Relocate: 1 EA @ \$885.88

Uninterruptible Power Supply, Remove - Pole/Cabinet Remains: 1 EA @ \$839.75

Traffic Signal Controller Cabinet, Remove: 1 EA @ \$2,368.76

Fees

Design, Survey, and Post Design Fees: 1 EA @ \$19,281

17. Pasadena Ave and Gulfport Blvd, South Pasadena

Materials (furnish and install)

Concrete sidewalk and driveways, 6" thick: 8 EA @ \$1,085.40

Conduit, F&I, open trench: 150 LF @ \$3,646.88

Signal cable – new or reconstructed intersection, F&I: 1 PI @ \$15,713.66

Fiber optic cable, F&I, underground, 2-12 fibers: 100 LF @ \$631.25
Fiber Optic Connection Hardware, F&I, Buffer Tube Fan-Out Kit: 1 EA @ \$132.44
Fiber Optic Connection Hardware, F&I, Preterminated Patch Panel: 1 EA @ \$3,124.34
Fiber Optic Connection Hardware, F&I, Connector Panel: 1 EA @ \$275.71
Fiber Optic Connection Hardware, Adjust/Modify Splice Enclosure: 1 EA @ \$1,365.50
Multi-Conductor Communication Cable, Furnish & Install, Cat 6: 100 LF @ \$510.00
Multi-Conductor Communication Cable, Furnish & Install, Composite: 400 LF @ \$4,500.00
Pull & Splice Box, F&I, 13" X 24" Cover Size: 2 EA @ \$4,139.13
Electrical Service Wire, F&I: 50 LF @ \$1,376.25
Option 1: Traffic Signal Controller Cabinet, F&I W/Riser, Cabinet W/O Controller, NEMA Type/Size 6, 44" W X 52" H X 24" D: 1 EA @ \$72,104.10

Labor

Traffic Control Officer: 8 HR @ \$890.80
Removal of existing concrete: 8 SY @ \$433.80
ITSFM Location documentation – intersection: 1 EA @ \$3,383.75
Signal cable, remove – intersection: 1 PI @ \$2,676.70
Fiber optic connection, install, splice: 4 EA @ \$330.15
Fiber Optic Cable locator: 1 DA @ \$372.28
Multi-Conductor Communication Cable, Remove: 500 LF @ \$518.75
Pull & Splice Vault, Remove: 2 EA @ \$1,131.25
Vehicle Detection System - Video, Relocate Cabinet Equipment: 1 EA @ \$2,695.31
Traffic Controller, Relocate - Without Cabinet: 1 EA @ \$3,809.41
Traffic Signal Controller Cabinet, Remove: 1 EA @ \$2,368.76
Managed Ethernet Field Switch, Relocate: 1 EA @ \$885.88
Uninterruptible Power Supply, Remove - Pole/Cabinet Remains: 1 EA @ \$839.75
Traffic Signal Controller Cabinet, Remove: 1 EA @ \$2,368.76

Fees

Design, Survey, and Post Design Fees: 1 EA @ \$19,696

18. Gulfport Blvd and Oleander Way, South Pasadena

Materials (furnish and install)

Conduit, F&I, open trench: 150 LF @ \$3,646.88
Signal cable – new or reconstructed intersection, F&I: 1 PI @ \$15,713.66
Electrical Service Wire, F&I: 50 LF @ \$1,376.25
Option 2: Traffic Signal Controller Cabinet, F&I W/Taj Mahal, Cabinet W/O Controller, NEMA Type/Size 6, 44" W X 52" H X 24" D: 1 EA @ 74,138.95

Labor

Traffic Control Officer: 8 HR @ \$890.80
Signal cable, remove – intersection: 1 PI @ \$2,676.70
Removal of existing concrete: 2 SY @ \$108.45
Signal Cable, Remove – Intersection: 1 EA @ \$2,676.70
Pull & Splice Vault, Modify: 3 EA @ \$2,740.45
Traffic Controller, Relocate - Without Cabinet: 1 EA @ \$3,809.41

Traffic Signal Controller Cabinet, Remove: 1 EA @ \$2,368.76
Uninterruptible Power Supply, Remove - Pole/Cabinet Remains: 1 EA @ \$839.75
Traffic Signal Controller Cabinet, Remove: 1 EA @ \$2,368.76

Fees

Design, Survey, and Post Design Fees: 1 EA @ \$16,200

19. Gulf Blvd and West Gulf, Treasure Island

Materials (furnish and install)

Conduit, F&I, open trench: 100 LF @ \$2,431.25
Signal cable – new or reconstructed intersection, F&I: 1 PI @ \$15,713.66
Multi-Conductor Communication Cable, Furnish & Install, Cat 6: 100 LF @ \$510.00
Electrical Service Wire, F&I: 50 LF @ \$1,376.25
Option 1: Traffic Signal Controller Cabinet, F&I W/Riser, Cabinet W/O Controller, NEMA Type/Size 6, 44" W X 52" H X 24" D: 1 EA @ \$72,104.10

Labor

Traffic Control Officer: 8 HR @ \$890.80
Removal of existing concrete: 2 SY @ \$108.45
ITSFM Location documentation - intersection: 1 EA @ \$3,383.75
Signal cable, remove - intersection: 1 PI @ \$2,676.70
Multi-Conductor Communication Cable, Remove: 100 LF @ \$103.75
Pull & Splice Vault, Modify: 2 EA @ \$1,826.97
Traffic Controller, Relocate - Without Cabinet: 1 EA @ \$3,809.41
Traffic Signal Controller Cabinet, Remove: 1 EA @ \$2,368.76

Fees

Design, Survey, and Post Design Fees: 1 EA @ \$16,096

20. Pasadena Ave and Majestic Way, South Pasadena

Materials (furnish and install)

Concrete sidewalk and driveways, 6" thick: 8 SY @ \$1,085.40
Conduit, F&I, open trench: 200 LF @ \$4,862.50
Signal cable – new or reconstructed intersection, F&I: 1 PI @ \$15,713.66
Fiber optic cable, F&I, underground, 2-12 fibers: 100 LF @ \$631.25
Fiber Optic Connection Hardware, F&I, Buffer Tube Fan-Out Kit: 1 EA @ \$132.44
Fiber Optic Connection Hardware, F&I, Preterminated Patch Panel: 1 EA @ \$3,124.34
Fiber Optic Connection Hardware, F&I, Connector Panel: 1 EA @ \$275.71
Fiber Optic Connection Hardware, Adjust/Modify Splice Enclosure: 1 EA @ \$1,365.50
Multi-Conductor Communication Cable, Furnish & Install, Composite: 400 LF @ \$4,500.00
Pull & Splice Box, F&I, 13" X 24" Cover Size: 2 EA @ \$4,139.13
Electrical Service Wire, F&I: 50 LF @ \$1,376.25
Option 1: Traffic Signal Controller Cabinet, F&I W/Riser, Cabinet W/O Controller, NEMA Type/Size 6, 44" W X 52" H X 24" D: 1 EA @ \$72,104.10

Labor

Traffic Control Officer: 8 HR @ \$890.80

Removal of existing concrete: 8 SY @ \$433.80
ITSFM Location documentation - intersection: 1 EA @ \$3,383.75
Signal cable, remove - intersection: 1 PI @ \$2,676.70
Fiber optic connection, install, splice: 4 EA @ \$330.15
Fiber Optic Cable locator: 1 DA @ \$372.28
Multi-Conductor Communication Cable, Remove: 400 LF @ \$415.00
Pull & Splice Vault, Remove: 2 EA @ \$1,131.25
Vehicle Detection System - Video, Relocate Cabinet Equipment: 1 EA @ \$2,695.31
Traffic Controller, Relocate - Without Cabinet: 1 EA @ \$3,809.41
Traffic Signal Controller Cabinet, Remove: 1 EA @ \$2,368.76
Managed Ethernet Field Switch, Relocate: 1 EA @ \$885.88
Uninterruptible Power Supply, Remove - Pole/Cabinet Remains: 1 EA @ \$839.75
Traffic Signal Controller Cabinet, Remove: 1 EA @ \$2,368.76

Fees

Design, Survey, and Post Design Fees: 1 EA @ \$19,787

21. Blind Pass Rd and 84th Ave N, St Pete Beach

Materials (furnish and install)

Concrete sidewalk and driveways, 6" thick: 2 SY @ \$271.35
Conduit, F&I, open trench: 50 LF @ \$1,215.63
Signal cable – new or reconstructed intersection, F&I: 1 PI @ \$15,713.66
Pull & Splice Box, F&I, 13" X 24" Cover Size: 1 EA @ \$2,069.56
Electrical Service Wire, F&I: 50 LF @ \$1,376.25
Option 2: Traffic Signal Controller Cabinet, F&I W/Taj Mahal, Cabinet W/O Controller, NEMA Type/Size 6, 44" W X 52" H X 24" D: 1 EA @ \$74,138.95

Labor

Traffic Control Officer: 8 HR @ \$890.80
Removal of existing concrete: 4 SY @ \$216.90
ITSFM Location documentation - intersection: 1 EA @ \$3,383.75
Signal cable, remove - intersection: 1 PI @ \$2,676.70
Traffic Controller, Relocate - Without Cabinet: 1 EA @ \$3,809.41
Traffic Signal Controller Cabinet, Remove: 1 EA @ \$2,368.76

Fees

Design, Survey, and Post Design Fees: 1 EA @ \$16,220

22. 75th Ave and Boca Ciega Dr, St Pete Beach

Materials (furnish and install)

Conduit, F&I, open trench: 150 LF @ \$3,646.88
Signal cable – new or reconstructed intersection, F&I: 1 PI @ \$15,713.66
Multi-Conductor Communication Cable, Furnish & Install, Composite: 400 LF @ \$4,500.00
Electrical Service Wire, F&I: 50 LF @ \$1,376.25
Prestressed Concrete Pole, F&I, Type P-VIII: 1 EA @ \$31,500.00

Option 3: Traffic Signal Controller Cabinet, Furnish & Install Without Controller, NEMA Cabinet - 334 W/Sunshield, 30" W X 30" H X 16" D, Pole Mount: 1 EA @ \$117,539.45

Labor

Traffic Control Officer: 8 HR @ \$890.80
Removal of existing concrete: 2 SY @ \$108.45
ITSFM Location documentation - intersection: 1 EA @ \$3,383.75
Signal cable, remove - intersection: 1 PI @ \$2,676.70
Multi-Conductor Communication Cable, Remove: 400 LF @ \$415.00
Pull & Splice Vault, Modify: 3 EA @ \$2,740.45
Vehicle Detection System - Video, Relocate Cabinet Equipment: 1 EA @ \$2,695.31
Traffic Controller, Relocate - Without Cabinet: 1 EA @ \$3,809.41
Traffic Signal Controller Cabinet, Remove: 1 EA @ \$2,368.76
Uninterruptible Power Supply, Remove - Pole/Cabinet Remains: 1 EA @ \$839.75
Traffic Signal Controller Cabinet, Remove: 1 EA @ \$2,368.76

Fees

Design, Survey, and Post Design Fees: 1 EA @ \$29,486

23. 75th Ave and Blind Pass Rd, St Pete Beach

Materials (furnish and install)

Concrete sidewalk and driveways, 6" thick: 6 SY @ \$814.05
Conduit, F&I, open trench: 150 LF @ \$3,646.88
Signal cable – new or reconstructed intersection, F&I: 1 PI @ \$15,713.66
Fiber optic cable, F&I, underground, 2-12 fibers: 100 LF @ \$631.25
Fiber Optic Connection Hardware, F&I, Buffer Tube Fan-Out Kit: 1 EA @ \$132.44
Fiber Optic Connection Hardware, F&I, Preterminated Patch Panel: 1 EA @ \$3,124.34
Fiber Optic Connection Hardware, F&I, Connector Panel: 1 EA @ \$275.71
Fiber Optic Connection Hardware, Adjust/Modify Splice Enclosure: 1 EA @ \$1,365.50
Multi-Conductor Communication Cable, Furnish & Install, Cat 6: 100 LF @ \$510.00
Multi-Conductor Communication Cable, Furnish & Install, Composite: 400 LF @ \$4,500.00
Pull & Splice Box, F&I, 13" X 24" Cover Size: 2 EA @ \$4,139.13
Electrical Service Wire, F&I: 50 LF @ \$1,376.25
Option 1: Traffic Signal Controller Cabinet, F&I W/Riser, Cabinet W/O Controller, NEMA Type/Size 6, 44" W X 52" H X 24" D: 1 EA @ \$72,104.10

Labor

Traffic Control Officer: 8 HR @ \$890.80
Removal of existing concrete: 8 SY @ \$433.80
ITSFM Location documentation - intersection: 1 EA @ \$3,383.75
Replace route marker for existing conduit: 1 EA @ \$367.28
Signal cable, remove - intersection: 1 PI @ \$2,676.70
Fiber optic connection, install, splice: 4 EA @ \$330.15
Fiber Optic Cable locator: 1 DA @ \$372.28
Multi-Conductor Communication Cable, Remove: 500 LF @ \$518.75
Pull & Splice Vault, Remove: 2 EA @ \$1,131.25

Vehicle Detection System - Video, Relocate Cabinet Equipment: 1 EA @ \$2,695.31
Traffic Controller, Relocate - Without Cabinet: 1 EA @ \$3,809.41
Traffic Signal Controller Cabinet, Remove: 1 EA @ \$2,3968.76
Managed Ethernet Field Switch, Relocate: 1 EA @ \$885.88
Uninterruptible Power Supply, Remove - Pole/Cabinet Remains: 1 EA @ \$839.75
Traffic Signal Controller Cabinet, Remove: 1 EA @ \$2,368.76

Fees

Design, Survey, and Post Design Fees: 1 EA @ \$19,711

24. 75th Ave and Gulf Blvd, St Pete Beach

Materials (furnish and install)

Conduit, F&I, open trench: 250 LF @ \$6,078.13
Signal cable – new or reconstructed intersection, F&I: 1 PI @ \$15,713.66
Fiber optic cable, F&I, underground, 2-12 fibers: 100 LF @ \$631.25
Fiber Optic Connection Hardware, F&I, Buffer Tube Fan-Out Kit: 1 EA @ \$132.44
Fiber Optic Connection Hardware, F&I, Preterminated Patch Panel: 1 EA @ \$3,124.34
Fiber Optic Connection Hardware, F&I, Connector Panel: 1 EA @ \$275.71
Fiber Optic Connection Hardware, Adjust/Modify Splice Enclosure: 1 EA @ \$1,365.50
Multi-Conductor Communication Cable, Furnish & Install, Composite: 400 LF @ \$4,500.00
Electrical Service Wire, F&I: 50 LF @ \$1,376.25
Option 2: Traffic Signal Controller Cabinet, F&I W/Taj Mahal, Cabinet W/O Controller, NEMA Type/Size 6, 44" W X 52" H X 24" D: 1 EA @ \$74,138.95

Labor

Traffic Control Officer: 8 HR @ \$890.80
ITSFM Location documentation - intersection: 1 EA @ \$3,383.75
Replace route marker for existing conduit: 1 EA @ \$367.28
Signal cable, remove - intersection: 1 PI @ \$2,676.70
Fiber optic connection, install, splice: 4 EA @ \$330.15
Fiber Optic Cable locator: 1 DA @ \$372.28
Multi-Conductor Communication Cable, Remove: 400 LF @ \$415.00
Vehicle Detection System - Video, Relocate Cabinet Equipment: 1 EA @ \$2,695.31
Traffic Controller, Relocate - Without Cabinet: 1 EA @ \$3,809.41
Traffic Signal Controller Cabinet, Remove: 1 EA @ \$2,368.76
Managed Ethernet Field Switch, Relocate: 1 EA @ \$885.88
Uninterruptible Power Supply, Remove - Pole/Cabinet Remains: 1 EA @ \$839.75
Traffic Signal Controller Cabinet, Remove: 1 EA @ \$2,368.76

Fees

Design, Survey, and Post Design Fees: 1 EA @ \$19,311

25. Gulf Blvd and Corey Ave, St Pete Beach

Materials (furnish and install)

Conduit, F&I, open trench: 350 LF @ \$8,509.38
Signal cable – new or reconstructed intersection, F&I: 1 PI @ \$15,713.66

Fiber optic cable, F&I, underground, 2-12 fibers: 100 LF @ \$631.25
Fiber Optic Connection Hardware, F&I, Buffer Tube Fan-Out Kit: 1 EA @ \$132.44
Fiber Optic Connection Hardware, F&I, Preterminated Patch Panel: 1 EA @ \$3,124.34
Fiber Optic Connection Hardware, F&I, Connector Panel: 1 EA @ \$275.71
Fiber Optic Connection Hardware, Adjust/Modify Splice Enclosure: 1 EA @ \$1,365.50
Multi-Conductor Communication Cable, Furnish & Install, Composite: 400 LF @ \$4,500.00
Electrical Service Wire, F&I: 50 LF @ \$1,376.25
Option 1: Traffic Signal Controller Cabinet, F&I W/Riser, Cabinet W/O Controller, NEMA Type/Size 6, 44" W X 52" H X 24" D: 1 EA @ \$72,104.10

Labor

Traffic Control Officer: 8 HR @ \$890.80
ITSFM Location documentation - intersection: 1 EA @ \$3,383.75
Replace route marker for existing conduit: 1 EA @ \$367.28
Signal cable, remove - intersection: 1 PI @ \$2,676.70
Fiber optic connection, install, splice: 4 EA @ \$330.15
Fiber Optic Cable locator: 1 DA @ \$372.28
Multi-Conductor Communication Cable, Remove: 400 LF @ \$415.00
Pull & Splice Vault, Modify: 7 EA @ \$6,394.39
Vehicle Detection System - Video, Relocate Cabinet Equipment: 1 EA @ \$2,685.31
Traffic Controller, Relocate - Without Cabinet: 1 EA @ \$3,809.41
Traffic Signal Controller Cabinet, Remove: 1 EA @ \$2,368.76
Managed Ethernet Field Switch, Relocate: 1 EA @ \$885.88
Uninterruptible Power Supply, Remove - Pole/Cabinet Remains: 1 EA @ \$839.75
Traffic Signal Controller Cabinet, Remove: 1 EA @ \$2,368.76

Fees

Design, Survey, and Post Design Fees: 1 EA @ \$20,328

26. Gulf Blvd and Gulf Winds, St Pete Beach

Materials (furnish and install)

Conduit, F&I, open trench: 250 EA @ \$6,078.13
Signal cable – new or reconstructed intersection, F&I: 1 PI @ \$15,713.66
Fiber optic cable, F&I, underground, 2-12 fibers: 100 LF @ \$631.25
Fiber Optic Connection Hardware, F&I, Buffer Tube Fan-Out Kit: 1 EA @ \$132.44
Fiber Optic Connection Hardware, F&I, Preterminated Patch Panel: 1 EA @ \$3,124.34
Fiber Optic Connection Hardware, F&I, Connector Panel: 1 EA @ \$275.71
Fiber Optic Connection Hardware, Adjust/Modify Splice Enclosure: 1 EA @ \$1,365.50
Multi-Conductor Communication Cable, Furnish & Install, Composite: 400 LF @ \$4,500.00
Electrical Service Wire, F&I: 50 LF @ \$1,376.25
Option 1: Traffic Signal Controller Cabinet, F&I W/Riser, Cabinet W/O Controller, NEMA Type/Size 6, 44" W X 52" H X 24" D: 1 EA @ \$72,104.10

Labor

Traffic Control Officer: 8 HR @ \$890.80
ITSFM Location documentation - intersection: 1 EA @ \$3,383.75

Replace route marker for existing conduit: 1 EA @ \$367.28
Signal cable, remove - intersection: 1 PI @ \$2,676.70
Fiber optic connection, install, splice: 4 EA @ \$330.15
Fiber Optic Cable locator: 1 DA @ \$372.28
Multi-Conductor Communication Cable, Remove: 400 LF @ \$415.00
Pull & Splice Vault, Modify: 5 EA @ \$4,567.42
Vehicle Detection System - Video, Relocate Cabinet Equipment: 1 EA @ \$2,695.31
Traffic Controller, Relocate - Without Cabinet: 1 EA @ \$3,809.41
Traffic Signal Controller Cabinet, Remove: 1 EA @ \$2,368.76
Managed Ethernet Field Switch, Relocate: 1 EA @ \$885.88
Uninterruptible Power Supply, Remove - Pole/Cabinet Remains: 1 EA @ \$839.75
Traffic Signal Controller Cabinet, Remove: 1 EA @ \$2,368.76

Fees

Design, Survey, and Post Design Fees: 1 EA @ \$19,689

27. Gulf Blvd and 55th Ave N, St Pete Beach

Materials (furnish and install)

Conduit, F&I, open trench: 250 LF @ \$6,078.13
Signal cable – new or reconstructed intersection, F&I: 1 PI @ \$15,713.66
Fiber optic cable, F&I, underground, 2-12 fibers: 100 LF @ \$631.25
Fiber Optic Connection Hardware, F&I, Buffer Tube Fan-Out Kit: 1 EA @ \$132.44
Fiber Optic Connection Hardware, F&I, Preterminated Patch Panel: 1 EA @ \$3,124.34
Fiber Optic Connection Hardware, F&I, Connector Panel: 1 EA @ \$275.71
Fiber Optic Connection Hardware, Adjust/Modify Splice Enclosure: 1 EA @ \$1,365.50
Multi-Conductor Communication Cable, Furnish & Install, Cat 6: 100 LF @ \$510.00
Multi-Conductor Communication Cable, Furnish & Install, Composite: 400 LF @ \$4,500.00
Electrical Service Wire, F&I: 50 LF @ \$1,376.25
Option 1: Traffic Signal Controller Cabinet, F&I W/Riser, Cabinet W/O Controller, NEMA Type/Size 6, 44" W X 52" H X 24" D: 1 EA @ \$72,104.10

Labor

Traffic Control Officer: 8 HR @ \$890.80
Removal of existing concrete: 2 SY @ \$108.45
ITSFM Location documentation - intersection: 1 EA @ \$3,383.75
Replace route marker for existing conduit: 1 EA @ \$367.28
Signal cable, remove - intersection: 1 PI @ \$2,676.70
Fiber optic connection, install, splice: 4 EA @ \$330.15
Fiber Optic Cable locator: 1 DA @ \$372.28
Multi-Conductor Communication Cable, Remove: 500 LF @ \$418.75
Pull & Splice Vault, Modify: 5 EA @ \$4,567.42
Vehicle Detection System - Video, Relocate Cabinet Equipment: 1 EA @ \$2,695.31
Traffic Controller, Relocate - Without Cabinet: 1 EA @ \$3,809.41
Traffic Signal Controller Cabinet, Remove: 1 EA @ \$2,368.76
Managed Ethernet Field Switch, Relocate: 1 EA @ \$885.88

Fees

Design, Survey, and Post Design Fees: 1 EA @ \$19,303

28. Gulf Blvd and Dolphin Village, St Pete Beach

Materials (furnish and install)

Concrete sidewalk and driveways, 6" thick: 10 SY @ \$1,356.75
Conduit, F&I, open trench: 250 LF @ \$6,078.13
Signal cable – new or reconstructed intersection, F&I: 1 PI @ \$15,713.66
Fiber optic cable, F&I, underground, 2-12 fibers: 100 LF @ \$631.25
Fiber Optic Connection Hardware, F&I, Buffer Tube Fan-Out Kit: 1 EA @ \$132.44
Fiber Optic Connection Hardware, F&I, Preterminated Patch Panel: 1 EA @ \$3,124.34
Fiber Optic Connection Hardware, F&I, Connector Panel: 1 EA @ \$275.71
Fiber Optic Connection Hardware, Adjust/Modify Splice Enclosure: 1 EA @ \$1,365.50
Multi-Conductor Communication Cable, Furnish & Install, Cat 6: 100 LF @ \$510.00
Multi-Conductor Communication Cable, Furnish & Install, Composite: 400 LF @ \$4,500.00
Electrical Service Wire, F&I: 50 LF @ \$1,376.25
Option 1: Traffic Signal Controller Cabinet, F&I W/Riser, Cabinet W/O Controller, NEMA Type/Size 6, 44" W X 52" H X 24" D: 1 EA @ \$72,104.10

Labor

Traffic Control Officer: 8 HR @ \$890.80
Removal of existing concrete: 10 SY @ \$542.25
ITSFM Location documentation - intersection: 1 EA @ \$3,383.75
Replace route marker for existing conduit: 1 EA @ \$367.28
Signal cable, remove - intersection: 1 PI @ \$2,676.70
Fiber optic connection, install, splice: 4 EA @ \$330.15
Fiber Optic Cable locator: 1 DA @ \$372.28
Multi-Conductor Communication Cable, Remove: 500 LF @ \$518.75
Pull & Splice Vault, Modify: 5 EA @ \$4,567.42
Vehicle Detection System - Video, Relocate Cabinet Equipment: 1 EA @ \$2,695.31
Traffic Controller, Relocate - Without Cabinet: 1 EA @ \$3,809.41
Traffic Signal Controller Cabinet, Remove: 1 EA @ \$2,368.76
Managed Ethernet Field Switch, Relocate: 1 EA @ \$885.88

Fees

Design, Survey, and Post Design Fees: 1 EA @ \$19,587

29. Gulf Blvd and 44th Ave N, St Pete Beach

Materials (furnish and install)

Concrete sidewalk and driveways, 6" thick: 3 SY @ \$407.03
Conduit, F&I, open trench: 200 LF @ \$4,862.50
Signal cable – new or reconstructed intersection, F&I: 1 PI @ \$15,713.66
Fiber optic cable, F&I, underground, 2-12 fibers: 100 LF @ \$631.25
Fiber Optic Connection Hardware, F&I, Buffer Tube Fan-Out Kit: 1 EA @ \$132.44
Fiber Optic Connection Hardware, F&I, Preterminated Patch Panel: 1 EA @ \$3,124.34

Fiber Optic Connection Hardware, F&I, Connector Panel: 1 EA @ \$275.71
Fiber Optic Connection Hardware, Adjust/Modify Splice Enclosure: 1 EA @ \$1,365.50
Multi-Conductor Communication Cable, Furnish & Install, Composite: 400 LF @ \$4,500.00
Pull & Splice Box, F&I, 13" X 24" Cover Size: 2 EA @ \$4,139.13
Electrical Service Wire, F&I: 50 LF @ \$1,376.25
Option 1: Traffic Signal Controller Cabinet, F&I W/Riser, Cabinet W/O Controller, NEMA Type/Size 6, 44" W X 52" H X 24" D: 1 EA @ \$72,104.10

Labor

Traffic Control Officer: 8 HR @ \$890.80
Removal of existing concrete: 5 SY @ \$271.13
ITSFM Location documentation - intersection: 1 EA @ \$3,383.75
Replace route marker for existing conduit: 1 EA @ \$367.28
Signal cable, remove - intersection: 1 PI @ \$2,676.70
Fiber optic connection, install, splice: 4 EA @ \$330.15
Fiber Optic Cable locator: 1 DA @ \$372.28
Multi-Conductor Communication Cable, Remove: 400 LF @ \$415.00
Pull & Splice Vault, Modify: 2 EA @ \$1,826.97
Vehicle Detection System - Video, Relocate Cabinet Equipment: 1 EA @ \$2,695.31
Traffic Controller, Relocate - Without Cabinet: 1 EA @ \$3,809.41
Traffic Signal Controller Cabinet, Remove: 1 EA @ \$2,368.76
Managed Ethernet Field Switch, Relocate: 1 EA @ \$885.88

Fees

Design, Survey, and Post Design Fees: 1 EA @ \$19,339

30. Gulf Blvd and Pinellas Bayway, St Pete Beach

Materials (furnish and install)

Conduit, F&I, open trench: 250 LF @ \$6,078.13
Signal cable – new or reconstructed intersection, F&I: 1 PI @ \$15,713.66
Fiber optic cable, F&I, underground, 2-12 fibers: 100 LF @ \$631.25
Fiber Optic Connection Hardware, F&I, Buffer Tube Fan-Out Kit: 1 EA @ \$132.44
Fiber Optic Connection Hardware, F&I, Preterminated Patch Panel: 1 EA @ \$3,124.34
Fiber Optic Connection Hardware, F&I, Connector Panel: 1 EA @ \$275.71
Fiber Optic Connection Hardware, Adjust/Modify Splice Enclosure: 1 EA @ \$1,365.50
Multi-Conductor Communication Cable, Furnish & Install, Cat 6: 200 LF @ \$1,020.00
Multi-Conductor Communication Cable, Furnish & Install, Composite: 400 LF @ \$4,500.00
Electrical Service Wire, F&I: 50 LF @ \$1,376.25
Option 1: Traffic Signal Controller Cabinet, F&I W/Riser, Cabinet W/O Controller, NEMA Type/Size 6, 44" W X 52" H X 24" D: 1 EA @ \$72,104.10

Labor

Traffic Control Officer: 8 HR @ \$890.80
Removal of existing concrete: 2 SY @ \$108.45
ITSFM Location documentation - intersection: 1 EA @ \$3,383.75
Signal cable, remove - intersection: 1 PI @ \$2,676.70

Fiber optic connection, install, splice: 4 EA @ \$330.15
Fiber Optic Cable locator: 1 DA @ \$372.28
Multi-Conductor Communication Cable, Remove: 600 LF @ \$622.50
Pull & Splice Vault, Modify: 5 EA @ \$4,567.42
Vehicle Detection System - Video, Relocate Cabinet Equipment: 1 EA @ \$2,695.31
Vehicle Detection System - AVI, Bluetooth Relocate, Cabinet Equipment: 1 EA @ \$825.00
Traffic Controller, Relocate - Without Cabinet: 1 EA @ \$3,809.41
Traffic Signal Controller Cabinet, Remove: 1 EA @ \$2,368.76
Managed Ethernet Field Switch, Relocate: 1 EA @ \$885.88

Fees

Design, Survey, and Post Design Fees: 1 EA @ \$19,479

31. Gulf Blvd and 73rd Ave, St Pete Beach

Materials (furnish and install)

Conduit, F&I, open trench: 100 LF @ \$2,431.25
Signal cable – new or reconstructed intersection, F&I: 1 PI @ \$15,713.66
Fiber optic cable, F&I, underground, 2-12 fibers: 100 LF @ \$631.25
Fiber Optic Connection Hardware, F&I, Buffer Tube Fan-Out Kit: 1 EA @ \$132.44
Fiber Optic Connection Hardware, F&I, Preterminated Patch Panel: 1 EA @ \$3,124.34
Fiber Optic Connection Hardware, F&I, Connector Panel: 1 EA @ \$275.71
Fiber Optic Connection Hardware, Adjust/Modify Splice Enclosure: 1 EA @ \$1,365.50
Electrical Service Wire, F&I: 50 LF @ \$1,376.25
Option 1: Traffic Signal Controller Cabinet, F&I W/Riser, Cabinet W/O Controller, NEMA Type/Size 6, 44" W X 52" H X 24" D: 1 EA @ \$72,104.10

Labor

Traffic Control Officer: 8 HR @ \$890.80
Removal of existing concrete: 2 SY @ \$108.45
ITSFM Location documentation - intersection: 1 EA @ \$3,383.75
Signal cable, remove - intersection: 1 PI @ \$2,676.70
Fiber optic connection, install, splice: 4 EA @ \$330.15
Fiber Optic Cable locator: 1 DA @ \$372.28
Pull & Splice Vault, Modify: 3 EA @ \$2,740.45
Traffic Controller, Relocate - Without Cabinet: 1 EA @ \$3,809.41
Traffic Signal Controller Cabinet, Remove: 1 EA @ \$2,368.76
Managed Ethernet Field Switch, Relocate: 1 EA @ \$885.88

Fees

Design, Survey, and Post Design Fees: 1 EA @ \$15,943