

RESOLUTION NO. 20-9

RESOLUTION REAFFIRMING THE INTENT OF THE EAST LAKE OVERLAY AND SPECIFIC POLICIES OF THE PINELLAS COUNTY COMPREHENSIVE PLAN RESTRICTING DENSITY TO .5 UNITS PER ACRE IN THE NORTH PORTION OF PLANNING SECTOR TWO; REQUESTING THAT THE PINELLAS PLANNING COUNCIL AMEND THE COUNTYWIDE PLAN RULES TO ESTABLISH A RESIDENTIAL RURAL LAND USE MAP CATEGORY LIMITING DENSITY TO .5 UNITS PER ACRE; AND REQUESTING THAT UPON COMPLETION OF THE AMENDMENT TO THE COUNTYWIDE PLAN RULES THAT THE COUNTYWIDE PLAN MAP FOR THE AREA IDENTIFIED IN ATTACHEMNT "A" BE AMENDED FROM 1 UNIT PER ACRE TO .5 UNITS PER ACRE

WHEREAS, the Goals, Objectives and Policies of the Pinellas County Comprehensive Plan provide specific guidance for future development in the unincorporated County; and

WHEREAS, Objective 1.8 states that Pinellas County shall continue to implement future land use policies which restrict the proliferation of urban sprawl at a density which is not compatible with support facilities; and

WHEREAS, Policy 1.8.1 states that the County shall continue to utilize a maximum density of .5 units per gross acre in the norther portion of Planning Sector 2 as a mechanism to contain urban sprawl and protect the County's wellfields; and

WHEREAS, in 2012, Pinellas County adopted ordinance No. 12-13 establishing the East Lake Tarpon Community overlay with associated objectives and policies that define the characteristics of the area and further the community's vision for the future;

NOW THEREFORE, BE IT RESOLVED by the Board of County Commissioners of Pinellas County in regular session duly assembled this 25th day of February 2020, that the Pinellas County Board of County Commissioners seeks to further protect the East Lake Tarpon community through additional density limitations incorporated into the Pinellas Countywide Plan Rules and subsequent map amendment to the Countywide Plan Map as follows:

- 1) The Pinellas County Board of County Commissioners hereby requests that the Pinellas Planning Council add an additional land use map category of “Residential Rural”, limiting density to .5 units per acre, to the Countywide Plan Rules
- 2) Upon completion of amendments specified in 1) above that the Pinellas Planning Council amend the Countywide Land Use Map from Residential Very Low (1 unit per acre) to Residential Rural (.5 units per acre) for the parcels identified as Residential Rural in Attachment A.

Commissioner Eggers offered the foregoing resolution and moved its adoption, which was seconded by Commissioner Welch upon the roll call the vote was:

Ayes: Gerard, Eggers, Justice, Long, Peters, Seel, and Welch



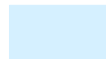
Nays: None

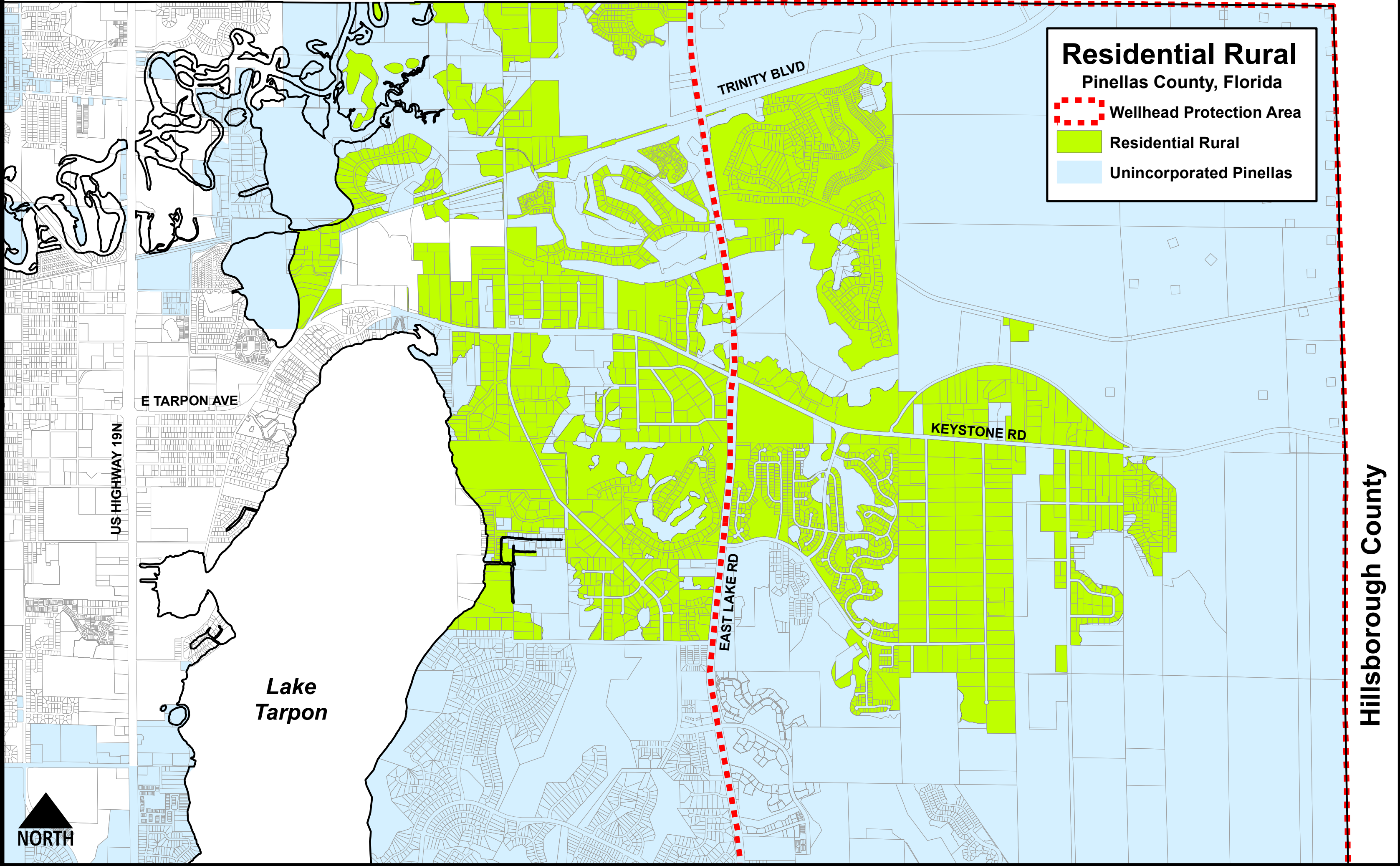
Absent and not voting: None

APPROVED AS TO FORM

By: *Don J. Selouby*
 Office of the County Attorney

Residential Rural
Pinellas County, Florida

-  Wellhead Protection Area
-  Residential Rural
-  Unincorporated Pinellas



E TARPON AVE

US HIGHWAY 19N

Lake Tarpon

TRINITY BLVD

KEYSTONE RD

EAST LAKE RD

Hillsborough County

