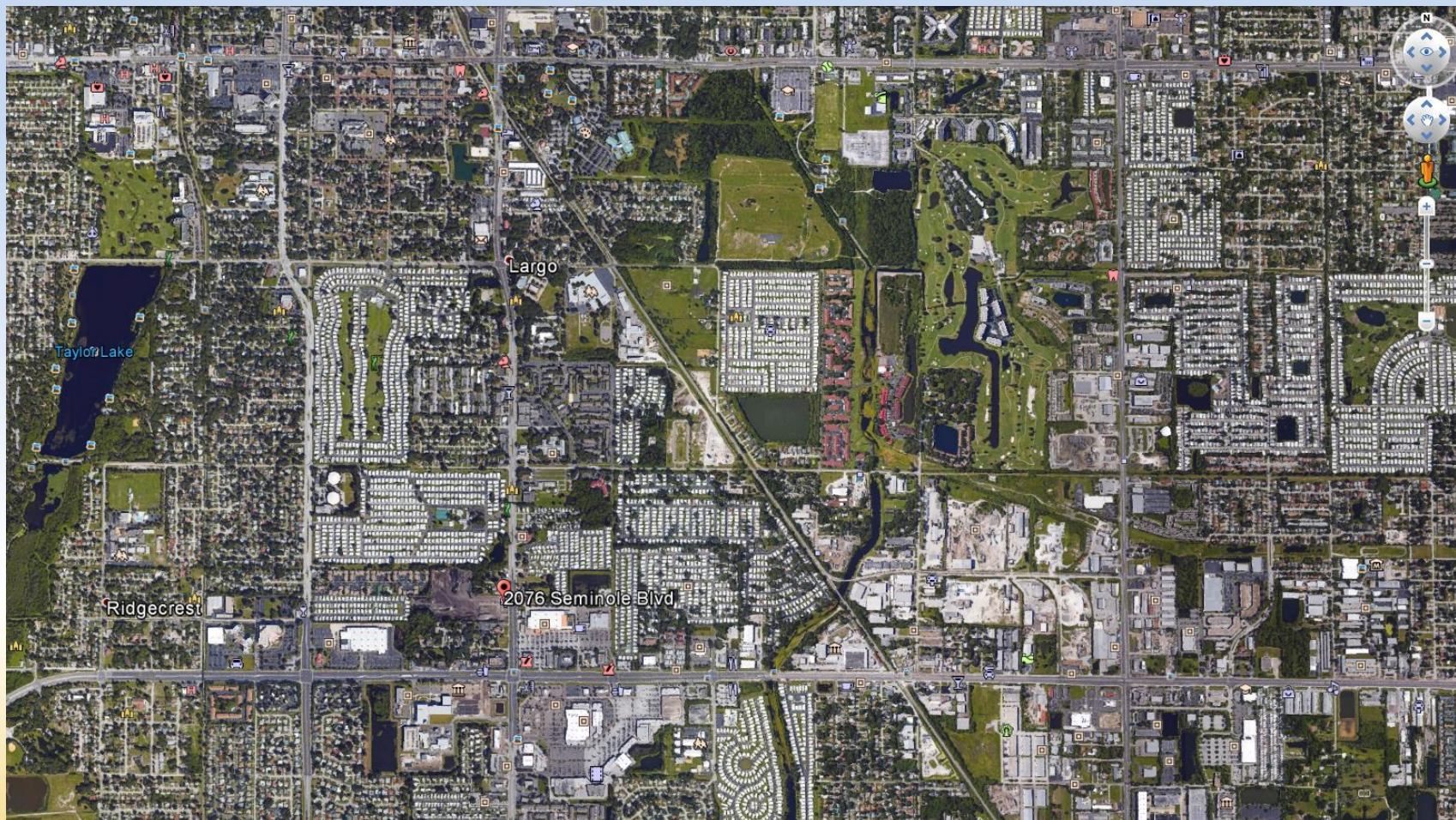


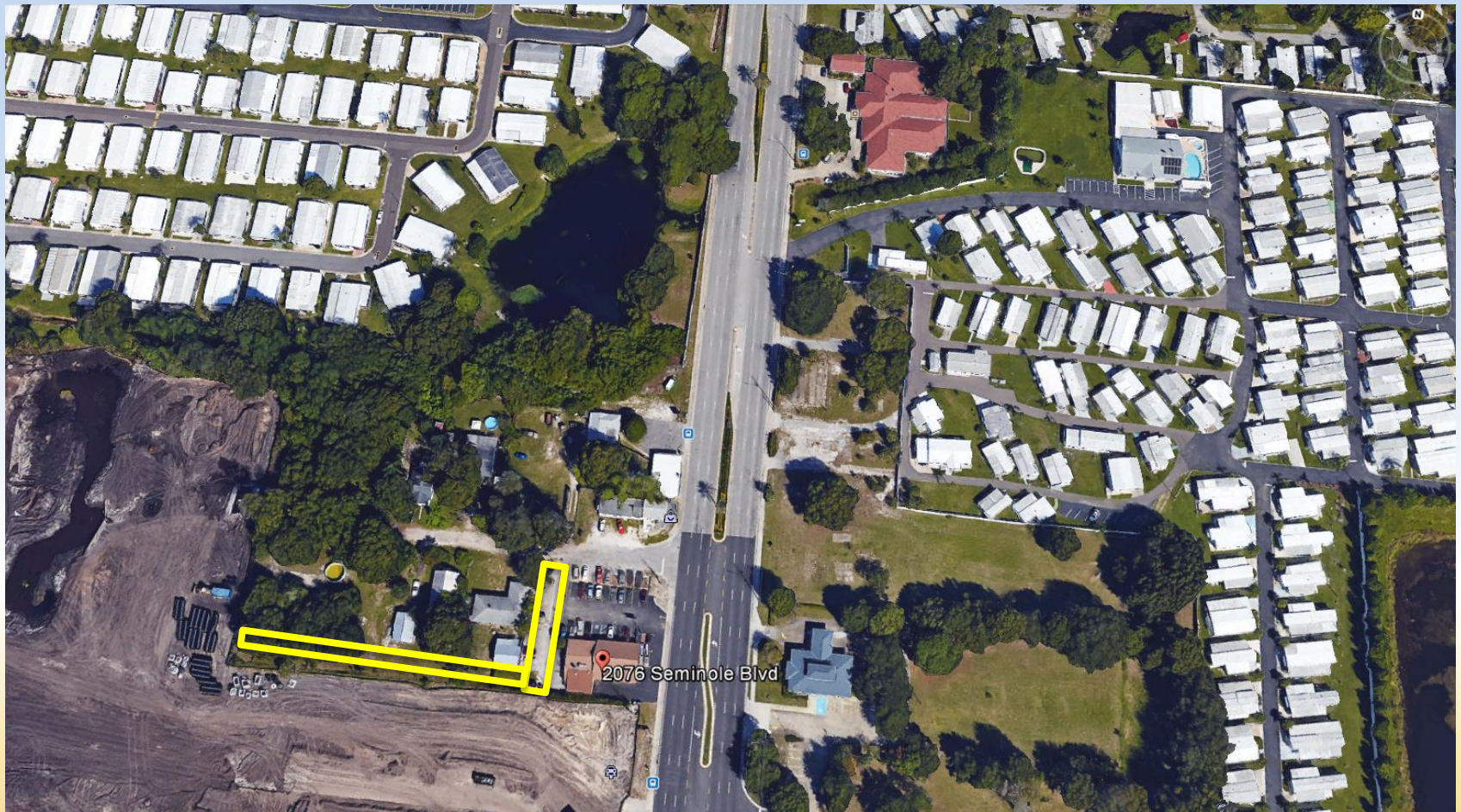
Petition to Vacate

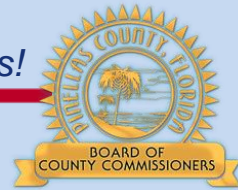
- The petitioners seek to vacate one 15-foot platted alley and one 6-foot platted alley in Conrade's Addition Subdivision, Largo.
- The vacation will eliminate unneeded right-of-way and will not land lock remnant right-of-way segments.
- There are no County utilities in the vacation areas.

LOCATION MAP



AERIAL – Proposed Petition to Vacate





PUBLIC NOTIFICATION

- Pursuant to Real Estate Management Procedures, residents within 200 feet of the property were notified by mail.
- Pursuant to Real Estate Management Procedures, yard signs (3) were also installed. One, on 20th Terrace SW; and two on Seminole Boulevard.

20th Terrace SW Facing West



South 15-Foot Alley



South 6-Foot Alley

