

DEMOLITION LEGEND

1. SHALL SAW OUT THE EXISTING EDGE OF CONCRETE TO REMOVAL OF ANY CURB OR PARAPET. COORDINATE WITH UTILITY COMPANIES PRIOR TO REMOVAL OF BELOW GROUND UTILITIES. SHALL BE REQUIRED FOR ALL SITE WORK. HARRISBURG (STATE AND REGION FOR SILT FENCE) IS TO BE DEMOLISHED PRIOR TO INFRASTRUCTURE ACTIVITIES.

DEMOLITION NOTES:

1. SHALL SAW OUT THE EXISTING EDGE OF CONCRETE TO REMOVAL OF ANY CURB OR PARAPET. COORDINATE WITH UTILITY COMPANIES PRIOR TO REMOVAL OF BELOW GROUND UTILITIES. SHALL BE REQUIRED FOR ALL SITE WORK. HARRISBURG (STATE AND REGION FOR SILT FENCE) IS TO BE DEMOLISHED PRIOR TO INFRASTRUCTURE ACTIVITIES.

2. SHALL SAW OUT THE EXISTING EDGE OF CONCRETE TO REMOVAL OF ANY CURB OR PARAPET. COORDINATE WITH UTILITY COMPANIES PRIOR TO REMOVAL OF BELOW GROUND UTILITIES. SHALL BE REQUIRED FOR ALL SITE WORK. HARRISBURG (STATE AND REGION FOR SILT FENCE) IS TO BE DEMOLISHED PRIOR TO INFRASTRUCTURE ACTIVITIES.

EXISTING UTILITIES AND CROSSING CONDITIONS

TYPE	DATE APPROVED	DATE TO REMAIN	DATE TO REMAIN
1" - 12" WATER	1-15, 27-48	N/A	
6" - 12" WATER	60-87		

SI TOTAL APPROVED DATE: 10-1-2014
 EXISTING STRUCTURE ON LOT 90 TO BE DEMOLISHED

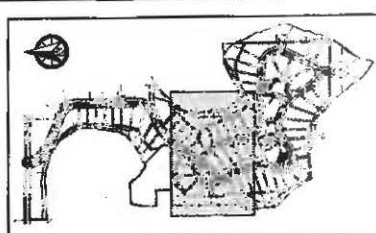
NOT INCLUDE:

1. SHALL SAW OUT THE EXISTING EDGE OF CONCRETE TO REMOVAL OF ANY CURB OR PARAPET. COORDINATE WITH UTILITY COMPANIES PRIOR TO REMOVAL OF BELOW GROUND UTILITIES. SHALL BE REQUIRED FOR ALL SITE WORK. HARRISBURG (STATE AND REGION FOR SILT FENCE) IS TO BE DEMOLISHED PRIOR TO INFRASTRUCTURE ACTIVITIES.

PREVIOUSLY APPROVED SEAWALL ROAD SECTION

1. SHALL SAW OUT THE EXISTING EDGE OF CONCRETE TO REMOVAL OF ANY CURB OR PARAPET. COORDINATE WITH UTILITY COMPANIES PRIOR TO REMOVAL OF BELOW GROUND UTILITIES. SHALL BE REQUIRED FOR ALL SITE WORK. HARRISBURG (STATE AND REGION FOR SILT FENCE) IS TO BE DEMOLISHED PRIOR TO INFRASTRUCTURE ACTIVITIES.

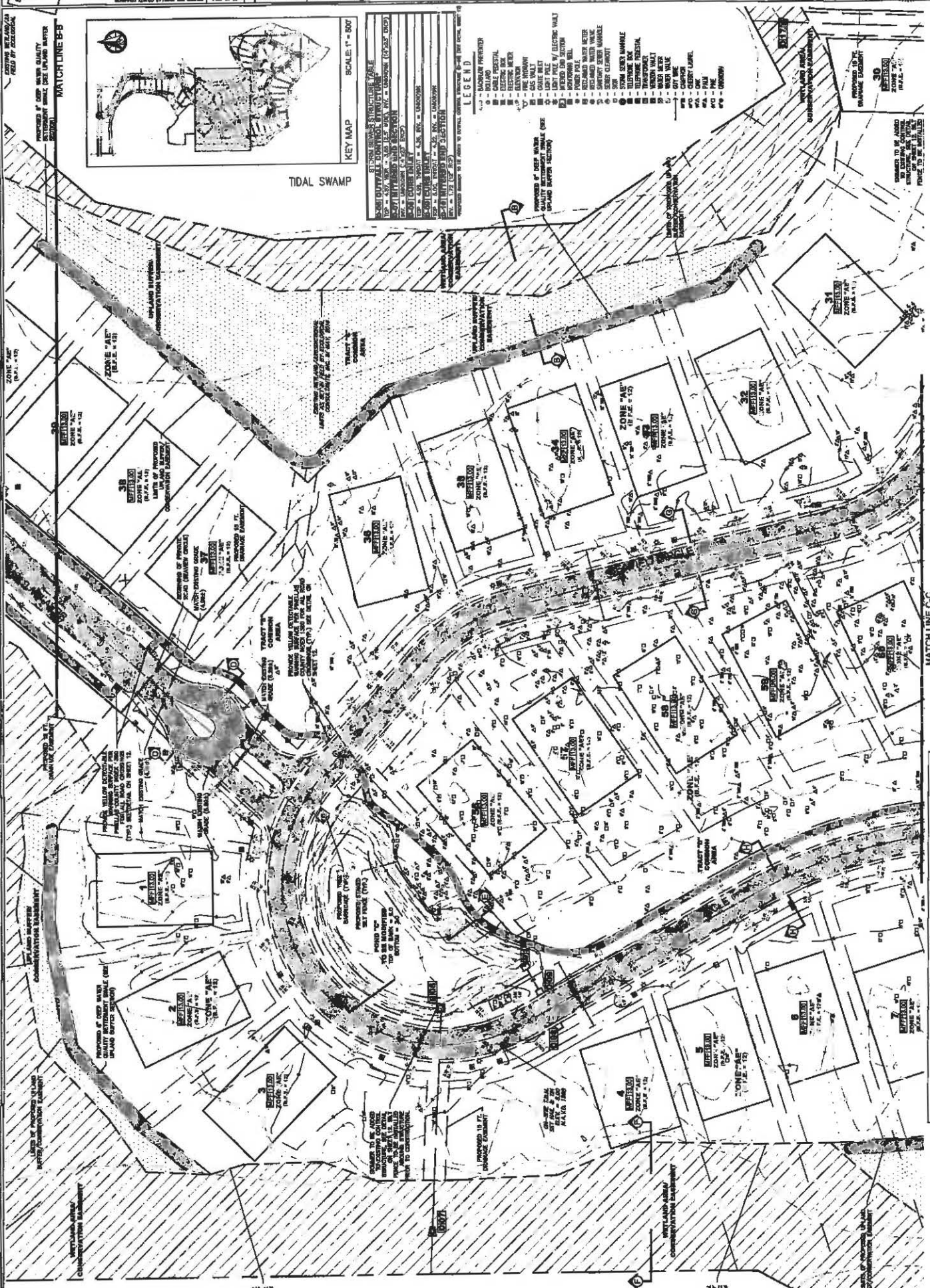
- STORMWATER POLLUTION PREVENTION NOTES**
1. The contractor shall be responsible for the installation of erosion control measures on all areas of the site. These measures may include, but are not limited to, silt fences, straw bales, erosion control blankets, and other measures. The contractor shall be responsible for the maintenance of these measures throughout the construction process.
 2. In addition to the measures listed above, the contractor shall install and maintain silt fences at all entrances and exits of the site. The silt fences shall be installed and maintained in accordance with the requirements of the Harrisburg (State and Region) Silt Fence Manual. The contractor shall be responsible for the maintenance of these measures throughout the construction process.
 3. The contractor shall be responsible for the installation and maintenance of silt fences at all entrances and exits of the site. The silt fences shall be installed and maintained in accordance with the requirements of the Harrisburg (State and Region) Silt Fence Manual. The contractor shall be responsible for the maintenance of these measures throughout the construction process.
 4. The contractor shall be responsible for the installation and maintenance of silt fences at all entrances and exits of the site. The silt fences shall be installed and maintained in accordance with the requirements of the Harrisburg (State and Region) Silt Fence Manual. The contractor shall be responsible for the maintenance of these measures throughout the construction process.
 5. The contractor shall be responsible for the installation and maintenance of silt fences at all entrances and exits of the site. The silt fences shall be installed and maintained in accordance with the requirements of the Harrisburg (State and Region) Silt Fence Manual. The contractor shall be responsible for the maintenance of these measures throughout the construction process.
 6. The contractor shall be responsible for the installation and maintenance of silt fences at all entrances and exits of the site. The silt fences shall be installed and maintained in accordance with the requirements of the Harrisburg (State and Region) Silt Fence Manual. The contractor shall be responsible for the maintenance of these measures throughout the construction process.



SCALE: 1" = 500'

LEGEND

- 1 - BOUNDARY
- 2 - ELEVATION
- 3 - ELEVATION
- 4 - ELEVATION
- 5 - ELEVATION
- 6 - ELEVATION
- 7 - ELEVATION
- 8 - ELEVATION
- 9 - ELEVATION
- 10 - ELEVATION
- 11 - ELEVATION
- 12 - ELEVATION
- 13 - ELEVATION
- 14 - ELEVATION
- 15 - ELEVATION
- 16 - ELEVATION
- 17 - ELEVATION
- 18 - ELEVATION
- 19 - ELEVATION
- 20 - ELEVATION
- 21 - ELEVATION
- 22 - ELEVATION
- 23 - ELEVATION
- 24 - ELEVATION
- 25 - ELEVATION
- 26 - ELEVATION
- 27 - ELEVATION
- 28 - ELEVATION
- 29 - ELEVATION
- 30 - ELEVATION
- 31 - ELEVATION
- 32 - ELEVATION
- 33 - ELEVATION
- 34 - ELEVATION
- 35 - ELEVATION
- 36 - ELEVATION
- 37 - ELEVATION
- 38 - ELEVATION
- 39 - ELEVATION
- 40 - ELEVATION
- 41 - ELEVATION
- 42 - ELEVATION
- 43 - ELEVATION
- 44 - ELEVATION
- 45 - ELEVATION
- 46 - ELEVATION
- 47 - ELEVATION
- 48 - ELEVATION
- 49 - ELEVATION
- 50 - ELEVATION
- 51 - ELEVATION
- 52 - ELEVATION
- 53 - ELEVATION
- 54 - ELEVATION
- 55 - ELEVATION
- 56 - ELEVATION
- 57 - ELEVATION
- 58 - ELEVATION
- 59 - ELEVATION
- 60 - ELEVATION
- 61 - ELEVATION
- 62 - ELEVATION
- 63 - ELEVATION
- 64 - ELEVATION
- 65 - ELEVATION
- 66 - ELEVATION
- 67 - ELEVATION
- 68 - ELEVATION
- 69 - ELEVATION
- 70 - ELEVATION
- 71 - ELEVATION
- 72 - ELEVATION
- 73 - ELEVATION
- 74 - ELEVATION
- 75 - ELEVATION
- 76 - ELEVATION
- 77 - ELEVATION
- 78 - ELEVATION
- 79 - ELEVATION
- 80 - ELEVATION
- 81 - ELEVATION
- 82 - ELEVATION
- 83 - ELEVATION
- 84 - ELEVATION
- 85 - ELEVATION
- 86 - ELEVATION
- 87 - ELEVATION
- 88 - ELEVATION
- 89 - ELEVATION
- 90 - ELEVATION
- 91 - ELEVATION
- 92 - ELEVATION
- 93 - ELEVATION
- 94 - ELEVATION
- 95 - ELEVATION
- 96 - ELEVATION
- 97 - ELEVATION
- 98 - ELEVATION
- 99 - ELEVATION
- 100 - ELEVATION



THE FOLLOWING REQUIREMENTS ARE CONDITIONS OF INDIVIDUAL LAND DEVELOPMENT AND MUST BE INCORPORATED AND APPROVED PRIOR TO THE SUBMITTAL OF ANY DEVELOPMENT PERMITS TO THE PHILADELPHIA PLANNING AND DEVELOPMENT DEPARTMENT:

1. THE DEVELOPER SHALL MAINTAIN THE EXISTING VEGETATION AND SOILS TO THE MAXIMUM EXTENT POSSIBLE.
2. THE DEVELOPER SHALL MAINTAIN THE EXISTING WETLANDS TO THE MAXIMUM EXTENT POSSIBLE.
3. THE DEVELOPER SHALL MAINTAIN THE EXISTING UPLANDS TO THE MAXIMUM EXTENT POSSIBLE.
4. THE DEVELOPER SHALL MAINTAIN THE EXISTING WETLANDS AND UPLANDS TO THE MAXIMUM EXTENT POSSIBLE.
5. THE DEVELOPER SHALL MAINTAIN THE EXISTING WETLANDS AND UPLANDS TO THE MAXIMUM EXTENT POSSIBLE.

PROPOSED UPLAND BUTTERFLY/CONSERVATION EASEMENT
 PROPOSED WETLAND AREA/CONSERVATION EASEMENT
 PROPOSED POND EXPANSION AREA

