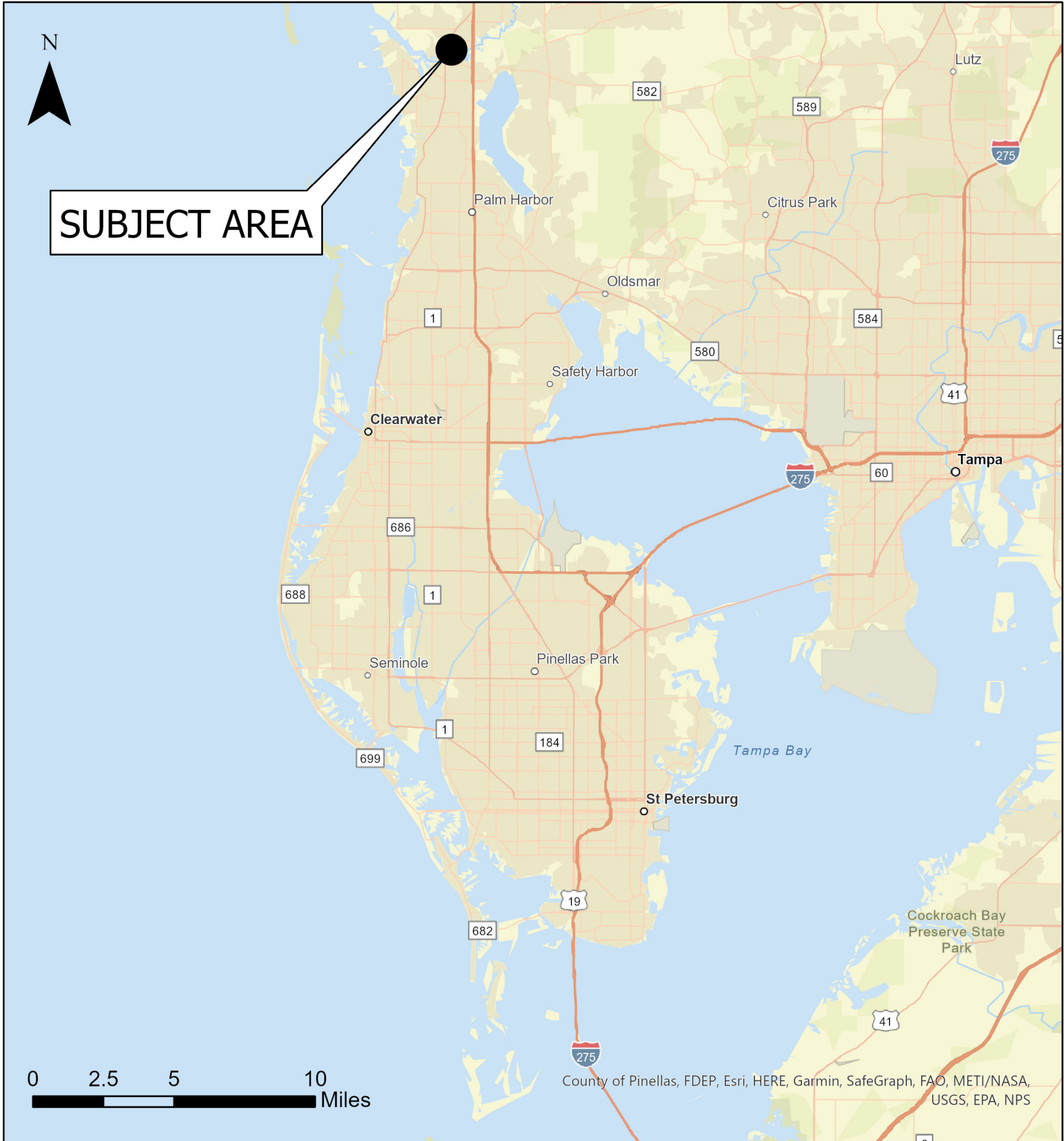


# Case CW23-06

## Map 1: Location Map



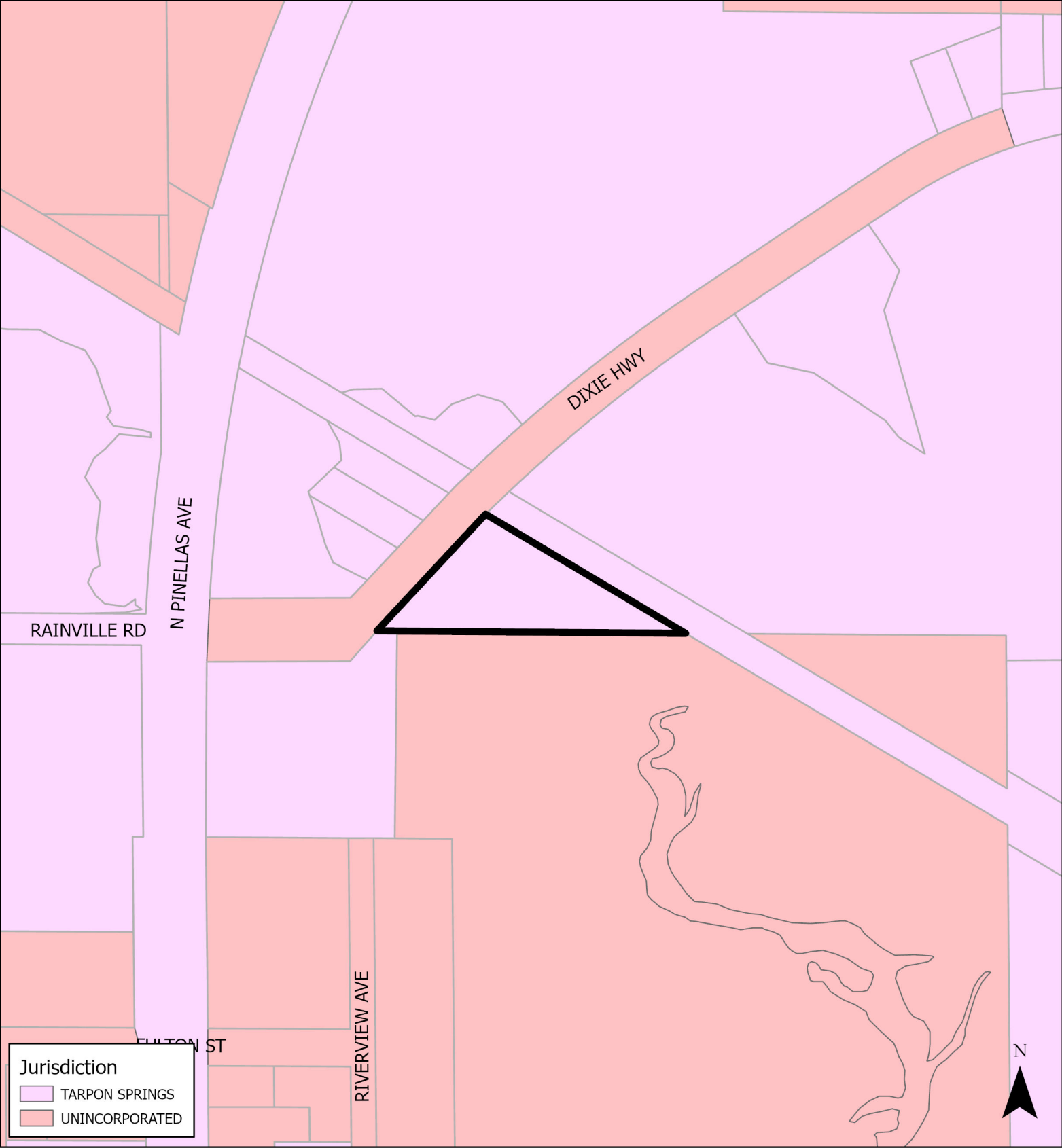
**JURISDICTION: Tarpon Springs**    **FROM: Residential Medium**

**AREA: 1.06 acres m.o.l.**

**TO: Public/Semi-Public**

# Case CW23-06

## Map 2: Jurisdictional Map



**JURISDICTION:** Tarpon Springs    **FROM:** Residential Medium

**AREA:** 1.06 acres m.o.l.    **TO:** Public/Semi-Public

0    100    200    400 Feet

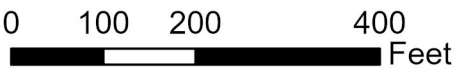
A horizontal scale bar with alternating black and white segments, marked with the numbers 0, 100, 200, and 400, followed by the word "Feet".



Case CW23-06  
Map 3: Aerial Map



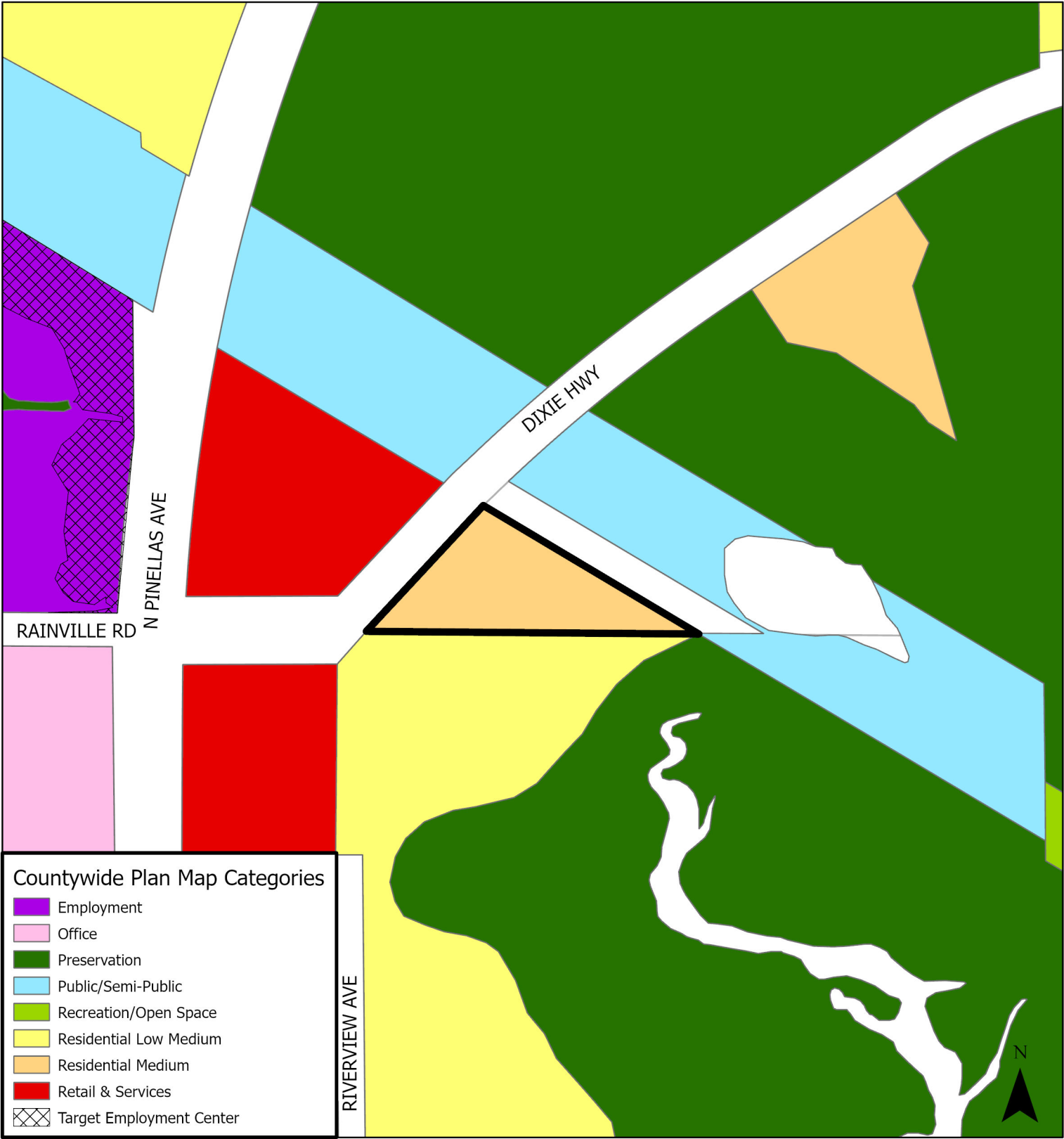
**JURISDICTION:** Tarpon Springs    **FROM:** Residential Medium  
**AREA:** 1.06 acres m.o.l.    **TO:** Public/Semi-Public





# Case CW23-06

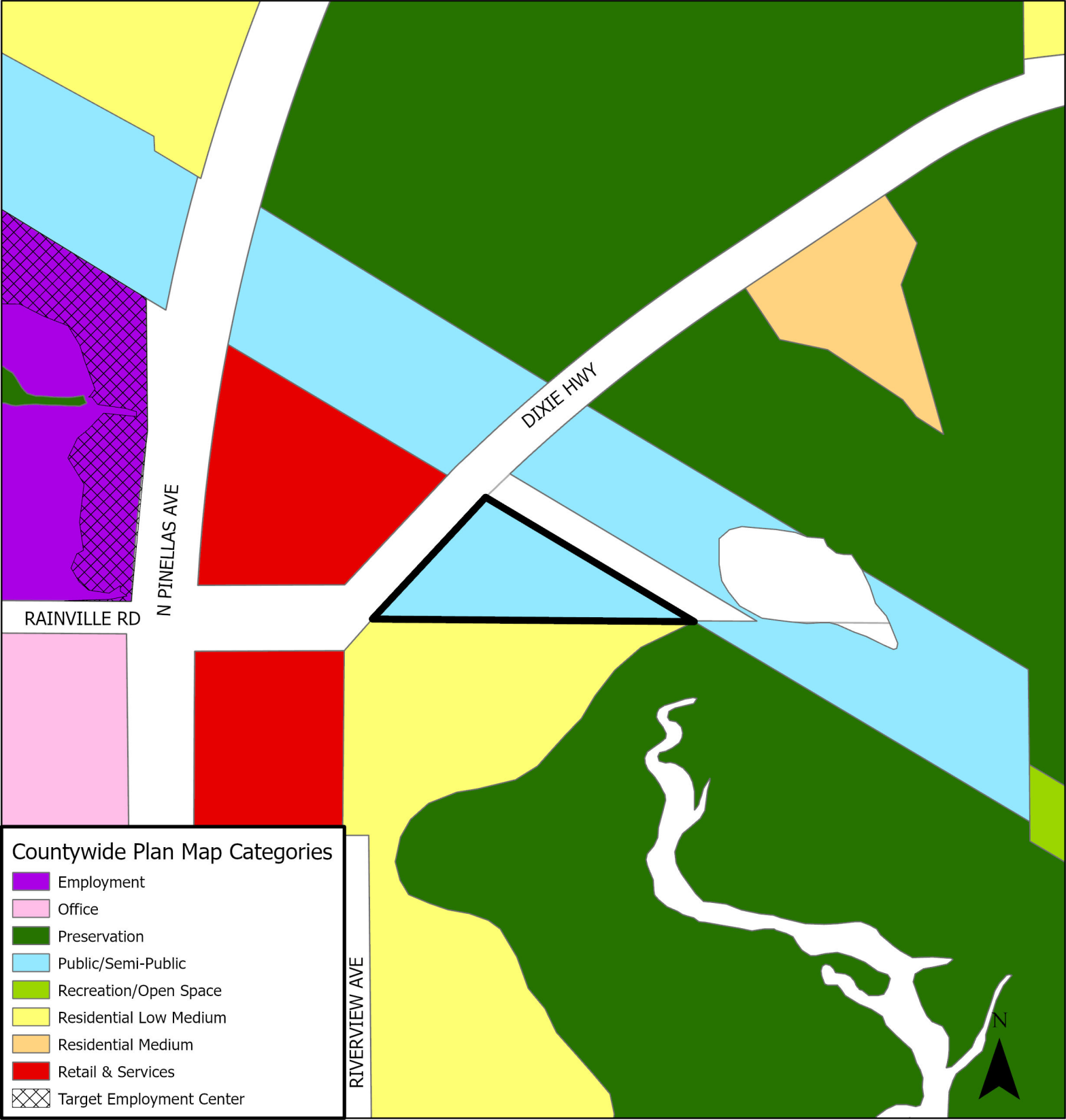
## Map 4: Current Countywide Plan Map



**JURISDICTION:** Tarpon Springs    **FROM:** Residential Medium  
**AREA:** 1.06 acres m.o.l    **TO:** Public/Semi-Public



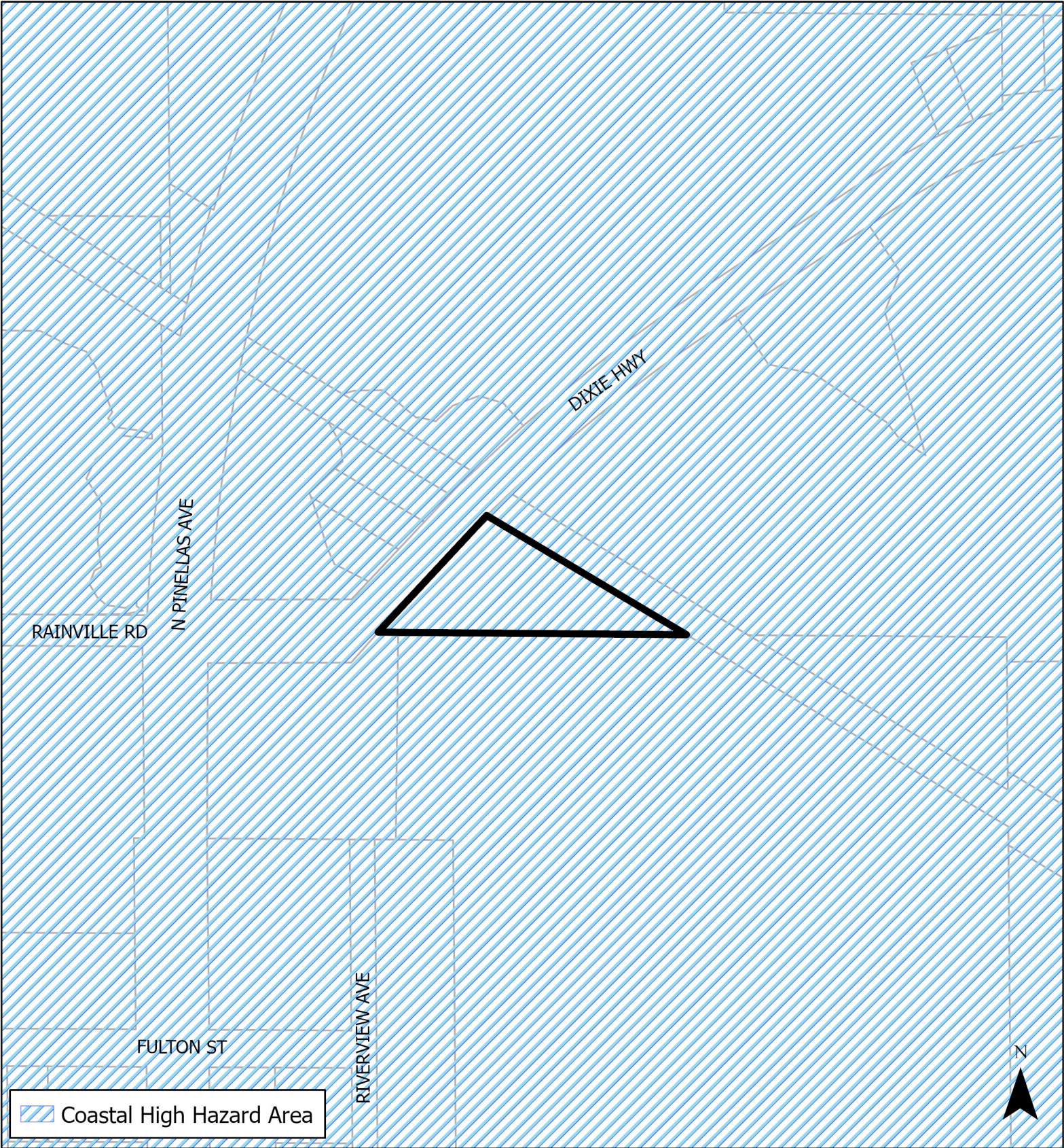






# Case CW23-06

## Map 6: Coastal High Hazard Area



**JURISDICTION:** Tarpon Springs    **FROM:** Residential Medium  
**AREA:** 1.06 acres m.o.l.    **TO:** Public/Semi-Public

