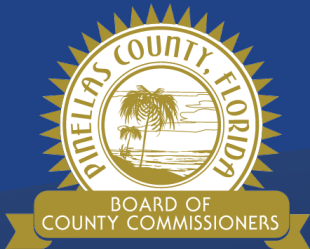


Land Development Code – Tree Regulation Updates Case #LDR-25-02

Building and Development Review Services

Staci Tippins

DRS Environmental Manager



Proposed Changes



- **Chapter 166 (LDC)**
 - Habitat Protection and Wetland Buffers
- **Chapter 138, Article X, Division 3 (LDC)**
 - Landscaping for residential and commercial lots
- **Chapter 58 (not LDC – 2nd Reading)**
 - Tree removal and mitigation
- **Fee Resolution (2nd Reading)**

Current Examples

Project:

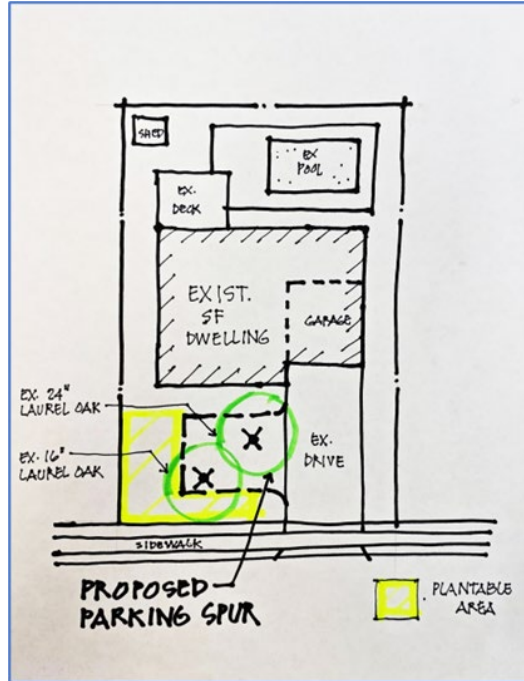
5,500 SF lot,
driveway addition,
two trees removed

A. Mitigation Required:

27 shade trees
or \$10,233
tree bank fund

B. Landscaping Requirement:

2 shade trees



Project:

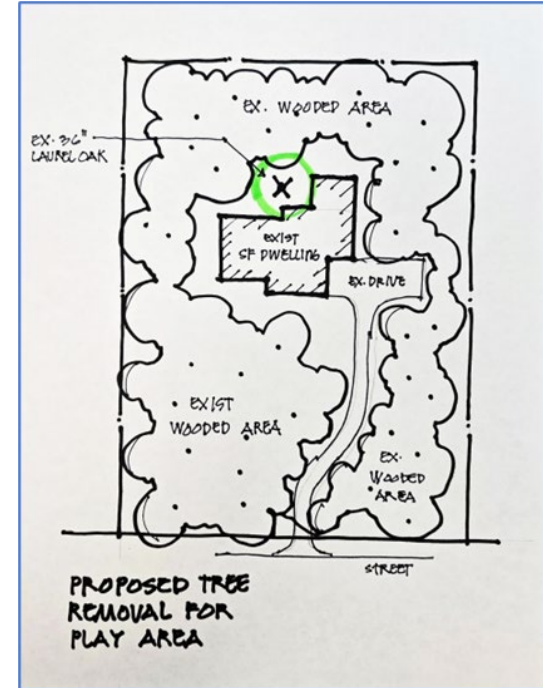
2-acre wooded lot,
play area, one tree
removed

A. Mitigation Required:

24 shade trees
or \$9,096 tree
bank fund

B. Landscaping Requirement:

44 shade trees



Tree Rating System - Table 58-813(a)

Grade	Description	Removal and Replacement Requirements
0 “Poor”	<ul style="list-style-type: none"> Dead/dying Nuisance or invasive species 	<ul style="list-style-type: none"> May be removed with approved permit. No replant trees required. Minimum landscape requirements do not apply.
1 “Fair”	<ul style="list-style-type: none"> Moderate die Damage from insects or diseases Single or multiple defects 	<ul style="list-style-type: none"> May be removed with approved permit. Replant trees required per Table 58-813(b). Minimum landscape requirements apply.
2 “Good”	<ul style="list-style-type: none"> No significant damage due to disease or pests Minor dieback Minor defects that are correctable 	<ul style="list-style-type: none"> May be removed with an approved permit when: <ul style="list-style-type: none"> Interferes with existing/proposed improvements or utilities Risk to health, safety, welfare Minimum landscape requirements apply. Replant trees required per Table 58-813(b).
3 “Excellent”	<ul style="list-style-type: none"> Native tree in excellent condition No defects Historic and specimen trees 	<ul style="list-style-type: none"> Same as above

Table 58-813(b) – Replant Tree Requirements

DBH of tree removed	Number of replants required by grade		
	Grade 1	Grade 2	Grade 3
4" – 14"	1	2	3
14.1" – 24 "	2	4	6
24.1" – 34"	3	6	9
>34"	4	8	12

Mitigation options:

1. Replant trees per table
2. Remove nuisance/invasive species
3. Plant native vegetative community
4. Tree Bank Contribution
5. Combination

Residential Landscaping – Sec. 138-3658



Landscape Trees Per Developed Lot:

Lot Size (square feet)	Minimum Trees Per Lot
≤ 2,500	1
2,501 – 5,000	2
5,001 – 7,500	3
7,501 – 10,000	4
> 10,001	4 plus one tree per 3,000
Note: A maximum of 15 trees will be required to meet minimum trees per lot requirements.	

Landscape Options:

1. Preserve
2. Plant
3. Pay – up to 40%

Revised Examples

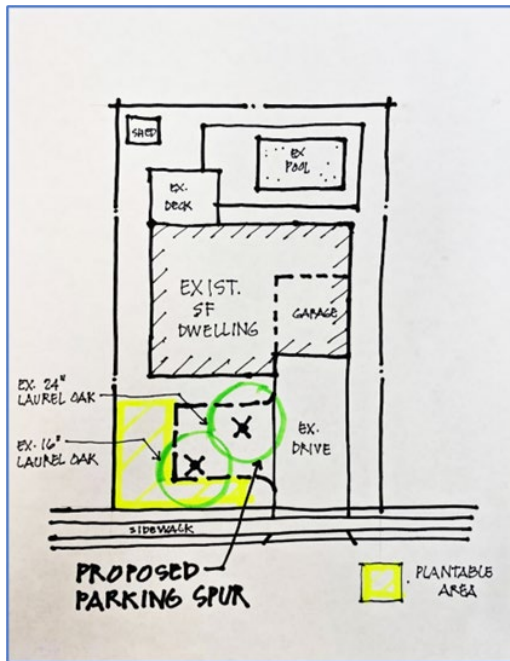
Project:

5,500 SF lot,
driveway addition,
two trees
removed

A. Mitigation Required:

Current	Proposed
27 trees	8 trees
\$10,233 tree bank fund	\$1,800 tree bank fund

B. Landscaping Requirement: 2 trees



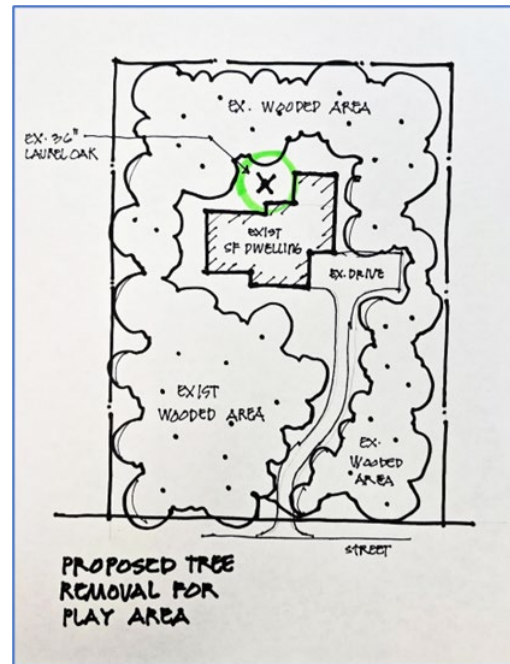
Project:

2-acre wooded
lot, play area, one
tree removed

A. Mitigation Required:

Current	Proposed
24 trees	8 trees
\$9,096 tree bank fund	\$2,400 tree bank fund

B. Landscaping Requirement: 15 trees MET (44)



Recommendation

Proposed Amendments

- July 31st – Proposed changes presented to BCC at work session
- Reviewed by both internal and external stakeholders
- Nov. 12th – Local Planning Agency Recommended Approval (Vote 6-0)
- Consistent with the Comprehensive Plan

Staff recommends approval

1. Ordinance amending Chapters 138 and 166 of LDC
2. Ordinance adopting Tree Code in Chapter 58
3. Fee resolution – Tree Bank contribution in lieu of planting