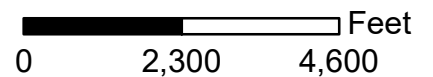






**JURISDICTION:** Pinellas County **FROM:** Residential Very Low

**AREA:** 2919.5 Acres **TO:** Residential Rural



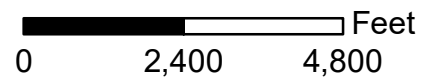
# Case CW20-13

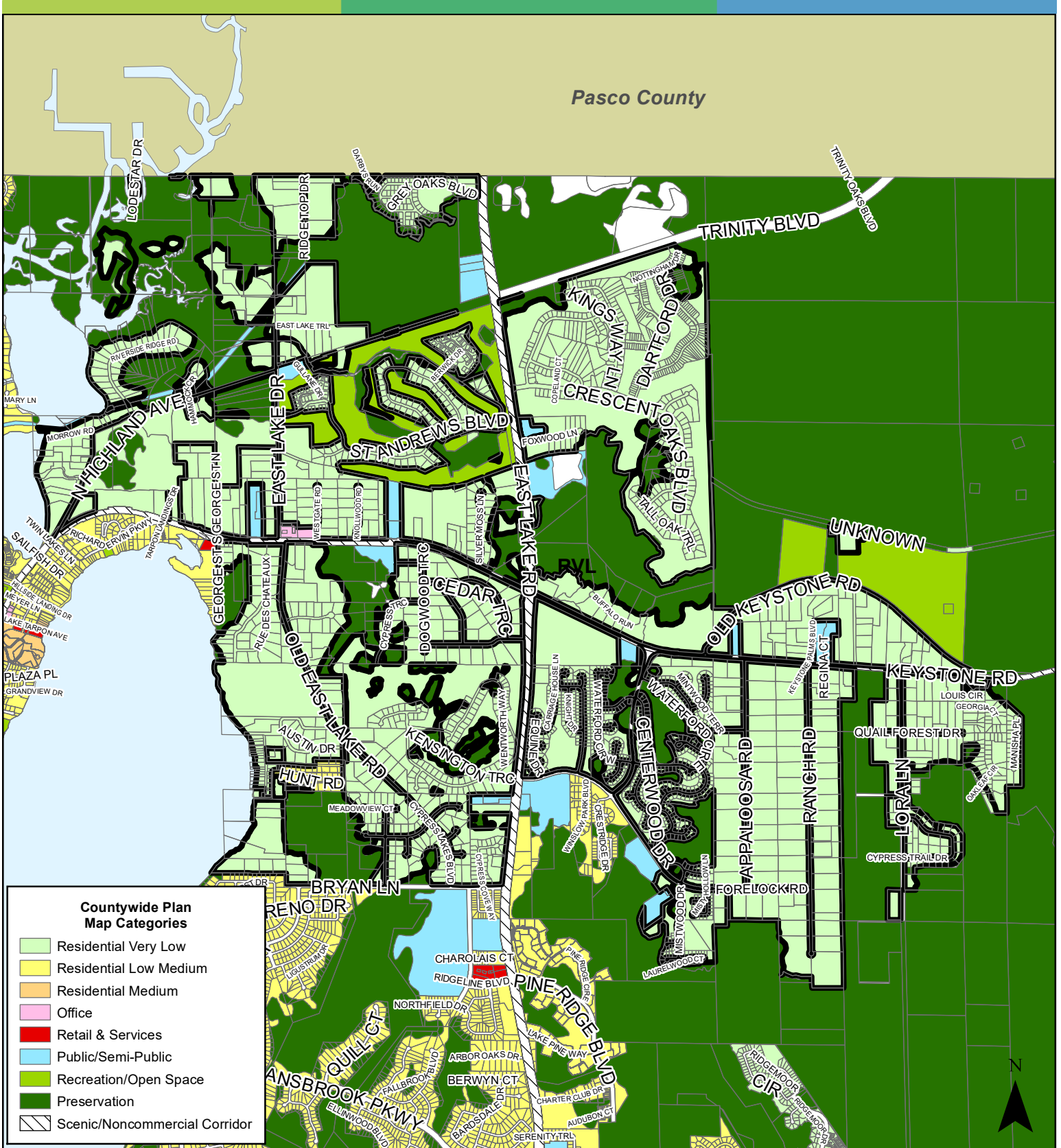
## Map 3: Aerial Map



**JURISDICTION:** Pinellas County    **FROM:** Residential Very Low

**AREA:** 2919.5 Acres    **TO:** Residential Rural



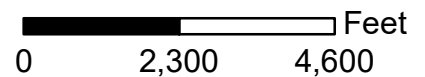


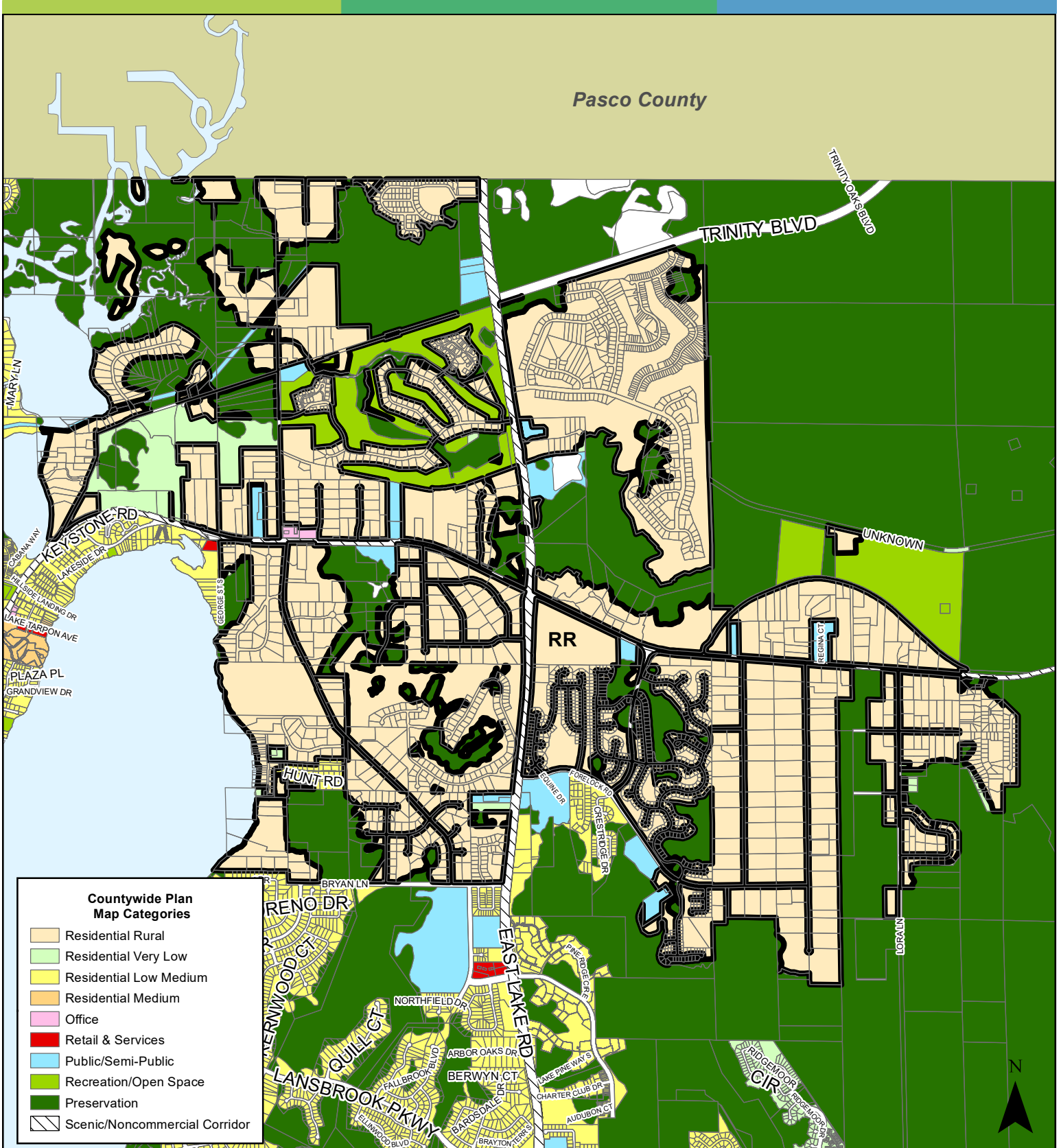
**Countywide Plan Map Categories**

- Residential Very Low
- Residential Low Medium
- Residential Medium
- Office
- Retail & Services
- Public/Semi-Public
- Recreation/Open Space
- Preservation
- Scenic/Noncommercial Corridor

**JURISDICTION:** Pinellas County **FROM:** Residential Very Low

**AREA:** 2919.5 Acres **TO:** Residential Rural





**JURISDICTION:** Pinellas County    **FROM:** Residential Very Low

**AREA:** 2919.5 Acres    **TO:** Residential Rural

