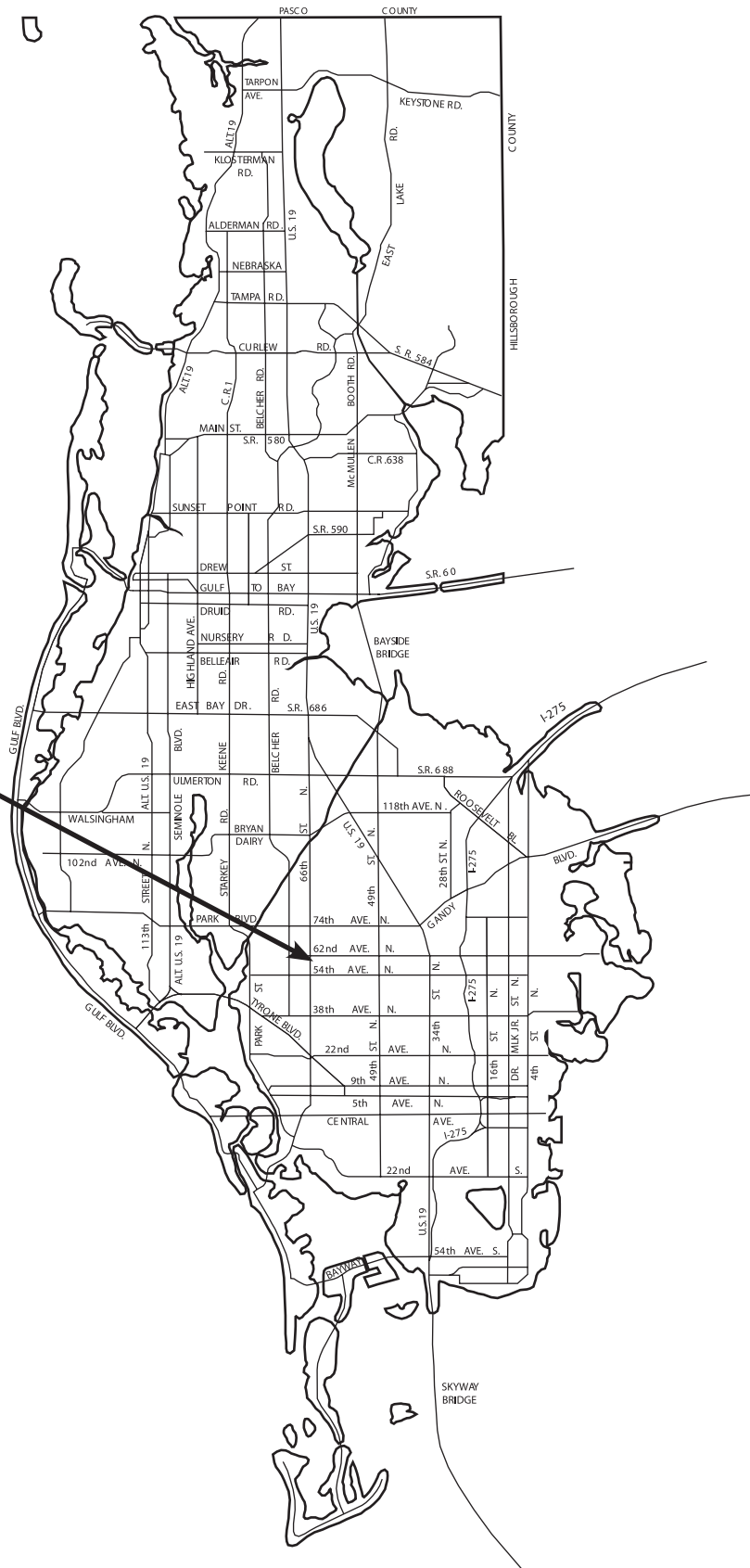


# LOCATION MAP

**LU-27-10-15**



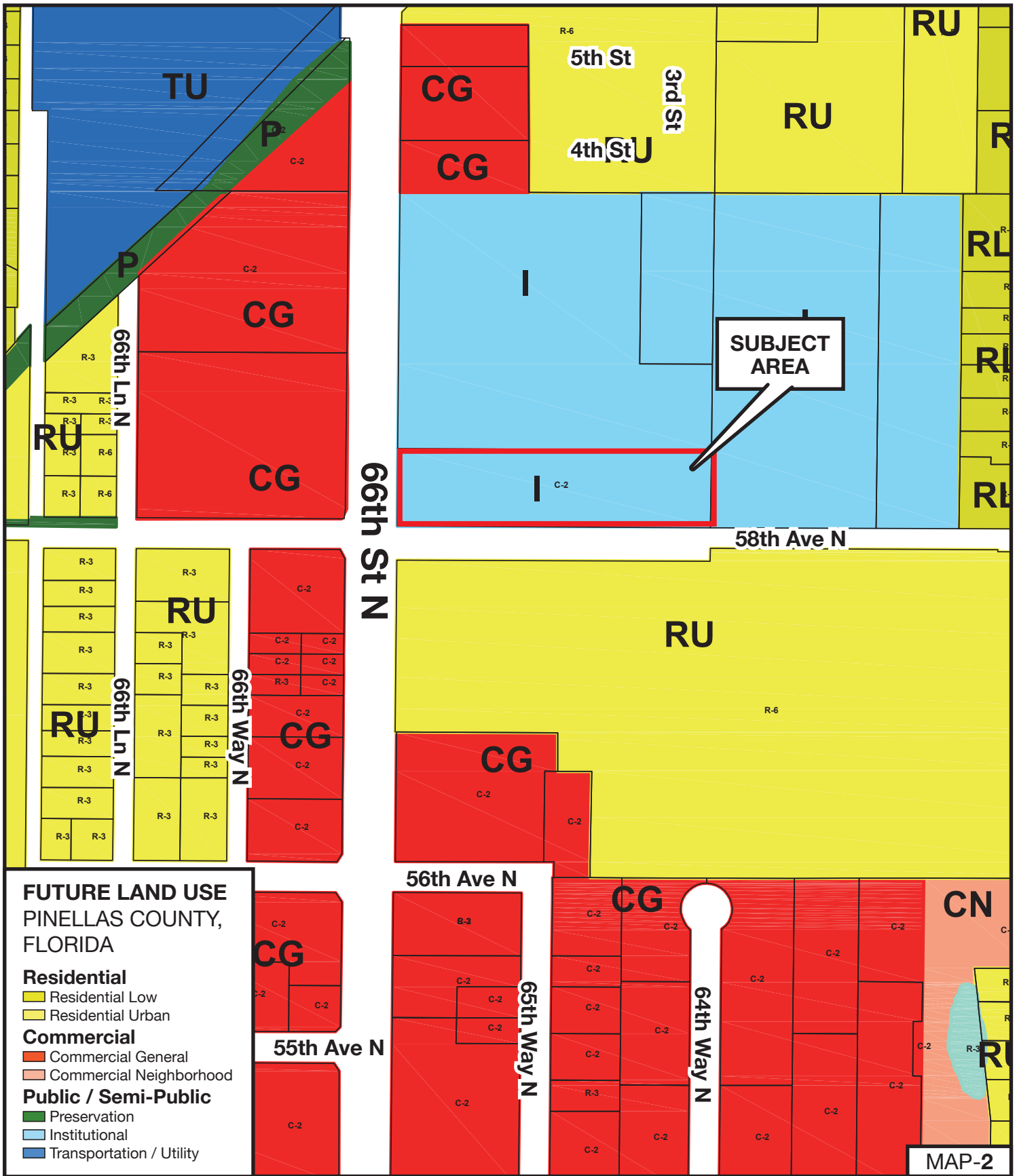
MAP-1

**LU-27-10-15**

Land Use From: Institutional  
To: Commercial General

Parcel I.D. 32/30/16/69930/330/0303  
Prepared by: Pinellas County Planning Department August 2015





**FUTURE LAND USE  
PINELLAS COUNTY,  
FLORIDA**

**Residential**

- Residential Low
- Residential Urban

**Commercial**

- Commercial General
- Commercial Neighborhood

**Public / Semi-Public**

- Preservation
- Institutional
- Transportation / Utility

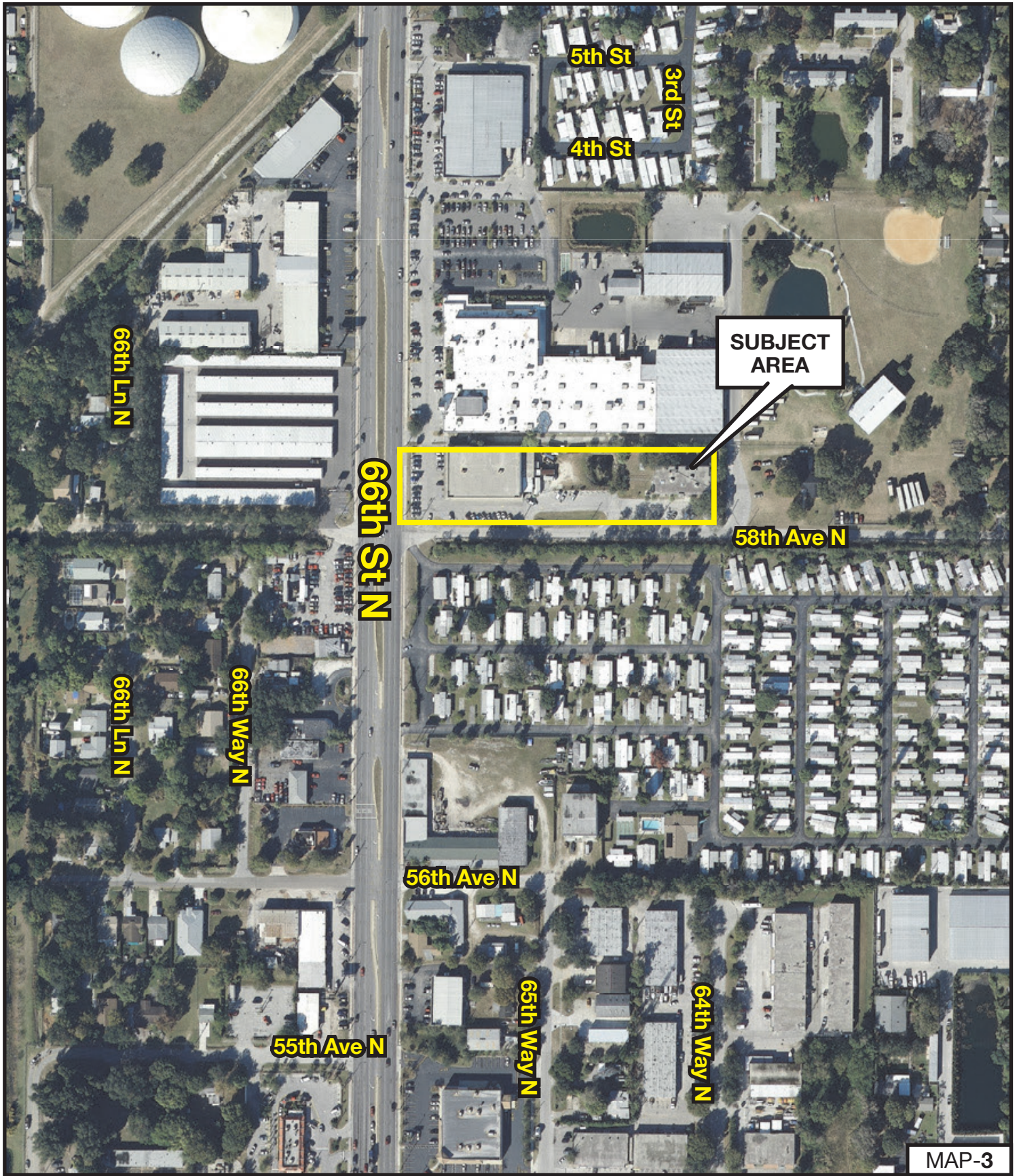
**LU-27-10-15**

Land Use From: Institutional  
To: Commercial General

Parcel I.D. 32/30/16/69930/330/0303  
Prepared by: Pinellas County Planning Department August 2015



MAP-2

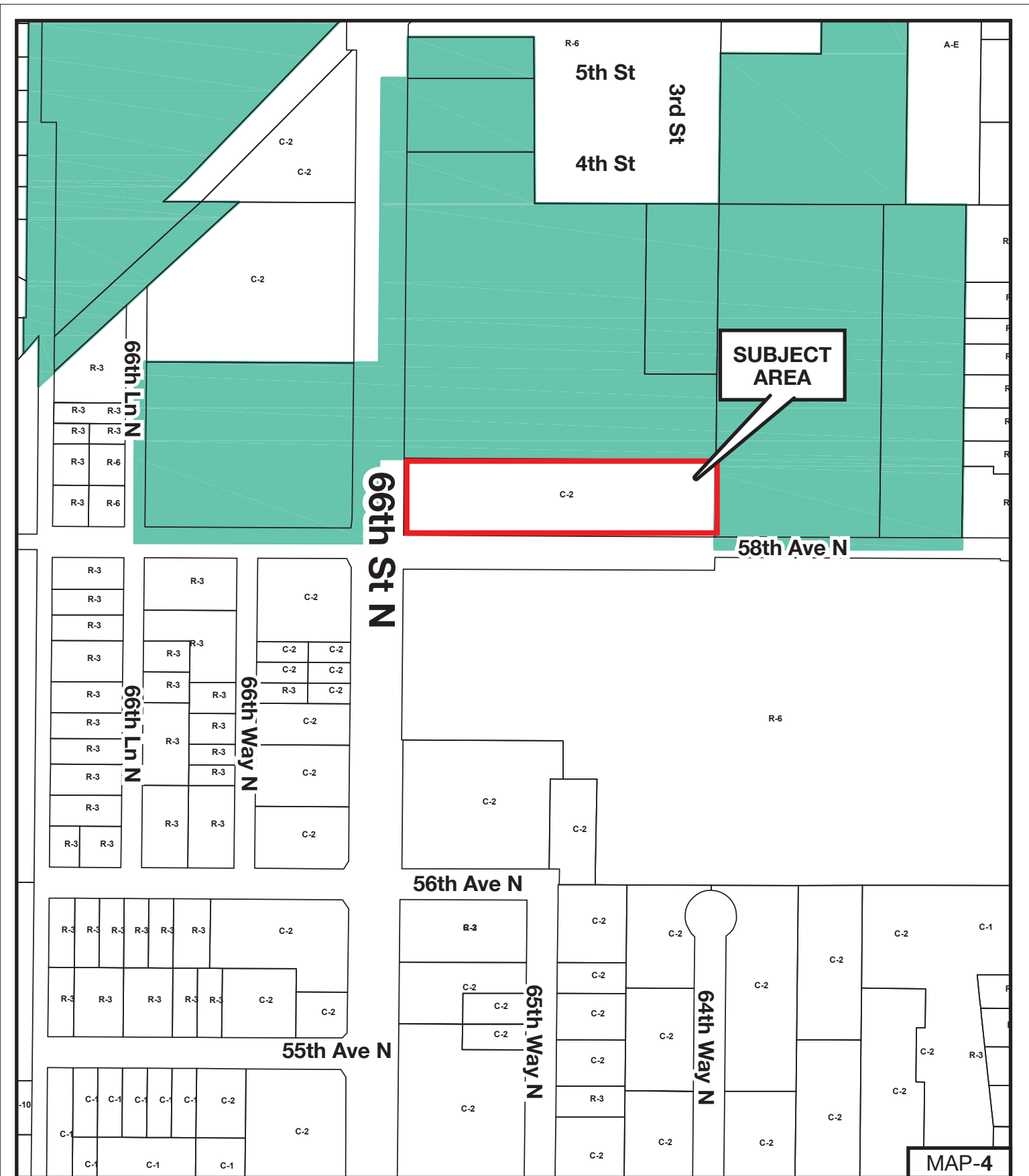


**LU-27-10-15**



Land Use From: Institutional  
To: Commercial General

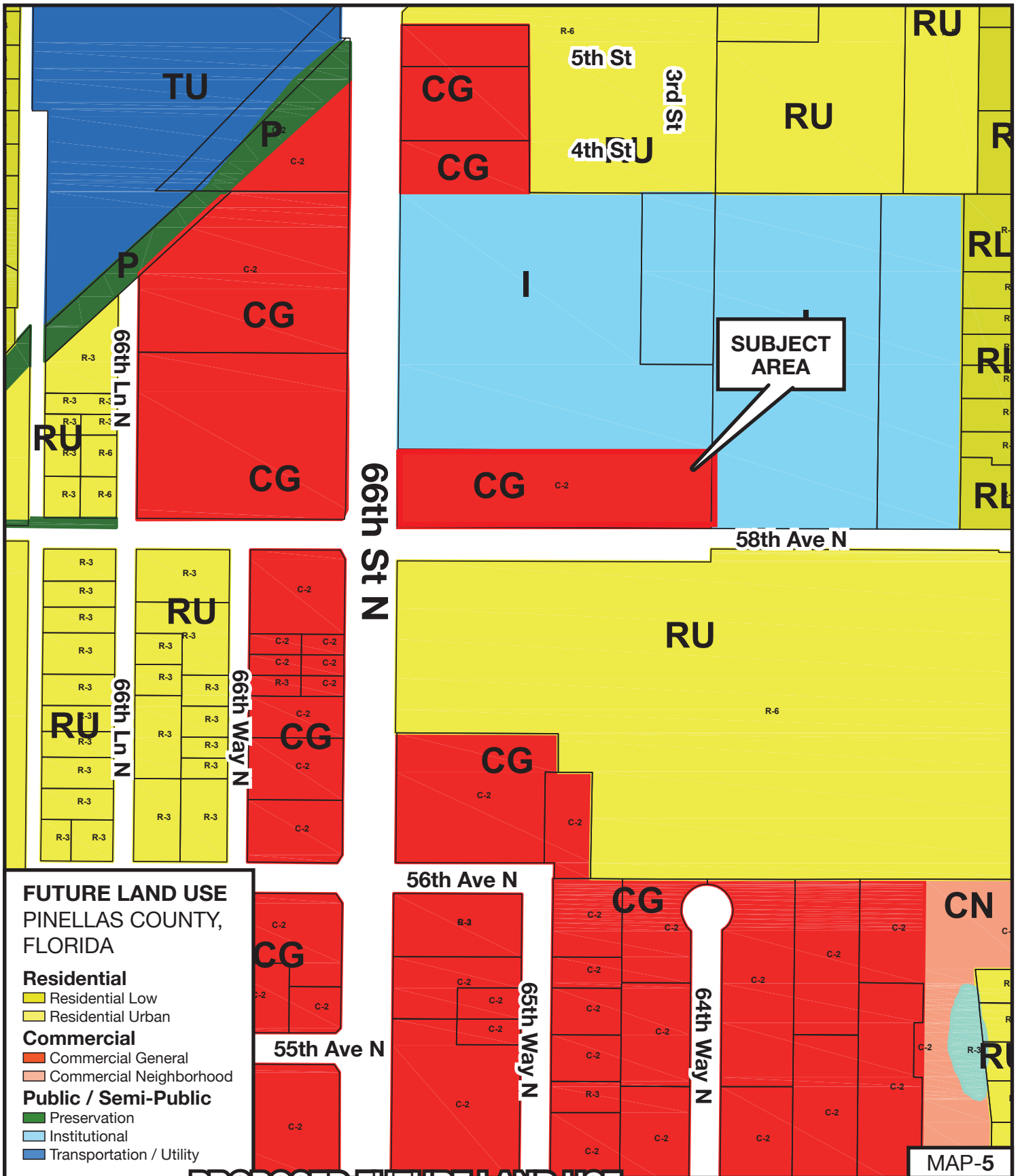
Parcel I.D. 32/30/16/69930/330/0303  
Prepared by: Pinellas County Planning Department August 2015





MAP-4

<p><b>LU-27-10-15</b></p>	<p>Land Use From: Institutional To: Commercial General</p>		
<p>Parcel I.D. 32/30/16/69930/330/0303 Prepared by: Pinellas County Planning Department August 2015</p>			



**FUTURE LAND USE  
PINELLAS COUNTY,  
FLORIDA**

**Residential**

- Residential Low
- Residential Urban

**Commercial**

- Commercial General
- Commercial Neighborhood

**Public / Semi-Public**

- Preservation
- Institutional
- Transportation / Utility

**PROPOSED FUTURE LAND USE**

**LU-27-10-15**

Land Use From: Institutional  
To: Commercial General

Parcel I.D. 32/30/16/69930/330/0303  
Prepared by: Pinellas County Planning Department August 2015



MAP-5