



BOARD OF COUNTY COMMISSIONERS PINELLAS COUNTY, FLORIDA

Ken Burke, CPA
Clerk of the County Court
Recorder of Deeds
Clerk and Accountant of the Board of County Commissioners
Custodian of County Funds
County Auditor
Clerk of the Water and Navigation Control Authority

315 Court Street
Clearwater, FL 33756
Telephone: (727) 464-3458
FAX: (727) 464-4716

February 3, 2023

Re: Petition of Team Savage Inc. to vacate the 12-foot-wide drainage easement lying along the South Boundary of lot 1, Block U, Curlew City, Plat Book 51, Page 19, Lying in Section 18-28-16, Pinellas County, Florida (29747 U.S. Highway 19 North)

Dear Petitioner:

Enclosed herewith are recorded documents as evidence that the Board of County Commissioners approved the Petition to Vacate, as submitted, during its meeting of January 31, 2023.

Very truly yours,

KEN BURKE, CLERK

By: 
Derelynn Revie, Deputy Clerk

KC/

Encls.

c: Dane Craft, Real Estate Management
Scott Jansen, Property Appraiser

A RESOLUTION OF THE BOARD OF COUNTY COMMISSIONERS OF PINELLAS COUNTY, FLORIDA. PETITION TO VACATE THE 12-FOOT-WIDE DRAINAGE EASEMENT LYING ALONG THE SOUTH BOUNDARY OF LOT 1, BLOCK U, CURLEW CITY, PLAT BOOK 51, PAGE 19, LYING IN SECTION 18-28-16, PINELLAS COUNTY, FLORIDA; AND PROVIDING AN EFFECTIVE DATE.

WHEREAS, Team Savage Inc, a Florida for Profit Corporation, the (“Petitioner”) has petitioned this Board of County Commissioners (“Board”) to vacate the following described property:

Lands described in the legal description in Exhibit A, attached hereto and by this reference made a part hereof;

WHEREAS, Petitioner has shown that the vacation of such portions of the plat will not affect the ownership or right of convenient access of persons owning other parts of the subdivision; and

WHEREAS, the Petitioner’s affidavit has been received by the Board; and

WHEREAS, the Board finds that the platted easement that is the subject of this Resolution no longer serve a public purpose and is a proper subject for vacation pursuant to Section 177.101, Florida Statutes.

NOW THEREFORE, BE IT RESOLVED by the Board of County Commissioners of Pinellas County, Florida that:

1. The above-described property and plat depicted in Exhibit A shall be vacated, insofar as this Board has the authority to do so pursuant to Section 177.101, Florida Statutes.

2. To the extent that the vacated area overlaps with any other public easement or right-of-way created by deed, plat, petition, maintenance, or otherwise, the subject vacation shall have no effect thereon.
3. The Clerk shall record this Resolution in the Public Records of Pinellas County, Florida.
4. This Resolution shall become effective upon recordation in the public records of Pinellas County, Florida.

In a regular meeting duly assembled on the 31st day of January, 2023, Commissioner Justice offered the foregoing Resolution and moved its adoption, which was seconded by Commissioner Eggers, and upon roll call the vote was:

AYES: Long, Peters, Eggers, Flowers, Justice, Latvala, and Scott.

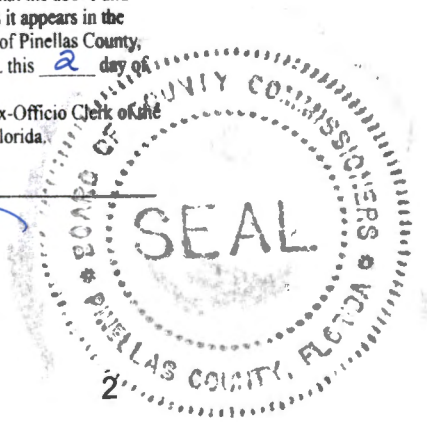
NAYS: None.

Absent and not voting: None.

I, Kenneth P. Burke, Clerk of the Circuit Court and Clerk Ex-Officio, Board of County Commissioners, do hereby certify that the above and foregoing is a true and correct copy of the original as it appears in the official files of the Board of County Commissioners of Pinellas County, Florida. Witness my hand and seal of said County FL this 2 day of February, 2023

KENNETH P. BURKE, Clerk of the Circuit Court Ex-Officio Clerk of the Board of County Commissioners, Pinellas County, Florida.

By  Deputy Clerk



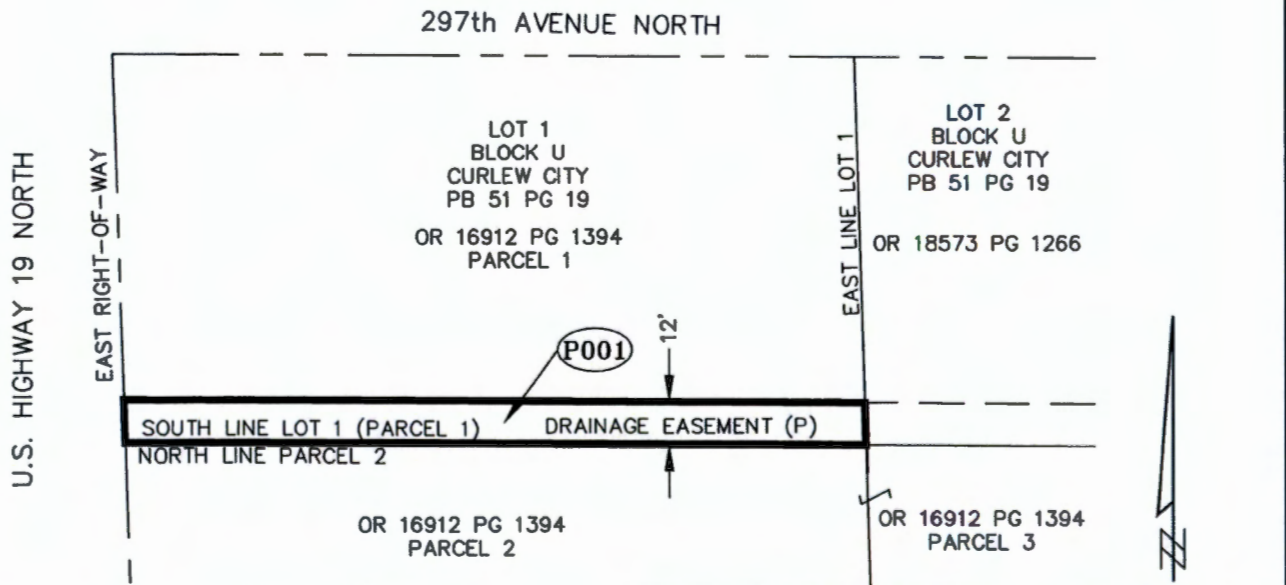
PINELLAS COUNTY
 PUBLIC WORKS
 SURVEY AND MAPPING DIVISION
 22211 U.S. HIGHWAY 19 N.
 CLEARWATER, FLORIDA 33765-2328



SECTION(S) 18, TOWNSHIP 28 SOUTH, RANGE 16 EAST
 DESCRIPTION

A platted 12 foot wide drainage easement being the south 12 feet of Lot 1, Block U, CURLEW CITY Subdivision, according to plat thereof, as recorded in Plat Book 51, Page 19, public records of Pinellas County Florida, lying in Section 18, Township 28 South, Range 16 East.

SKETCH - NOT A SURVEY



Reviewed by: AZ SZ
 Date: 11/29/2022
 SFN#: 0501_01709

LEGEND	
OR	OFFICIAL RECORD BOOK
PB	PLAT BOOK
PG	PAGE
(P)	PLAT

SCALE IN FEET
 1" = 50'

Additions or deletions by other than the Professional Surveyor and Mapper in responsible charge are prohibited. Sketch and/or Description is invalid without the original signature and seal of the Professional Surveyor and Mapper.

CALCULATED BY: CH	The above Sketch and Land description was prepared under my supervision and is true and correct to the best of my knowledge and belief. By: Pinellas County Survey and Mapping Division
CHECKED BY: JN	
S.F.N.: 1332_00431	DATE <u>11/29/2022</u> JAMES E. NEAL, PROFESSIONAL SURVEYOR AND MAPPER LICENSE NUMBER: 6590 STATE OF FLORIDA, PHONE # (727) 464-8904

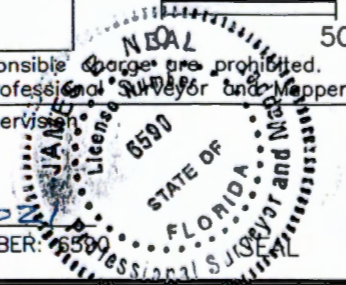


EXHIBIT "A"

Parcel No.: P001

SHEET 1 OF 1