

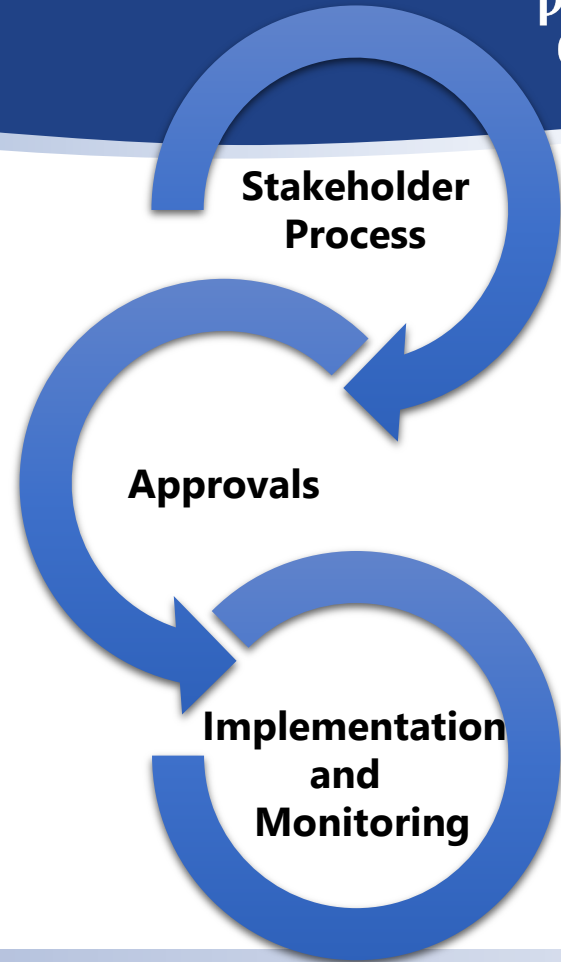


Stormwater Manual Update

Kelli Hammer Levy | Director, Public Works

Process

- **Stakeholder Review**
 - Internal staff
 - Third-party engineering firm
 - Development Community Advisory Committee
- **Formal Approval Processes**
 - Development Review Committee
 - Local Planning Authority
 - Board of County Commissioners
- **Implementation and Monitoring**



Focus Areas

- **Small site constraints**
- **Staff level adjustments**
- **Design criteria & tools**
- **Interpretation consistency**
- **Affordable housing**
- **Regional stormwater**
- **Process improvements**





Ensure public health, safety and welfare

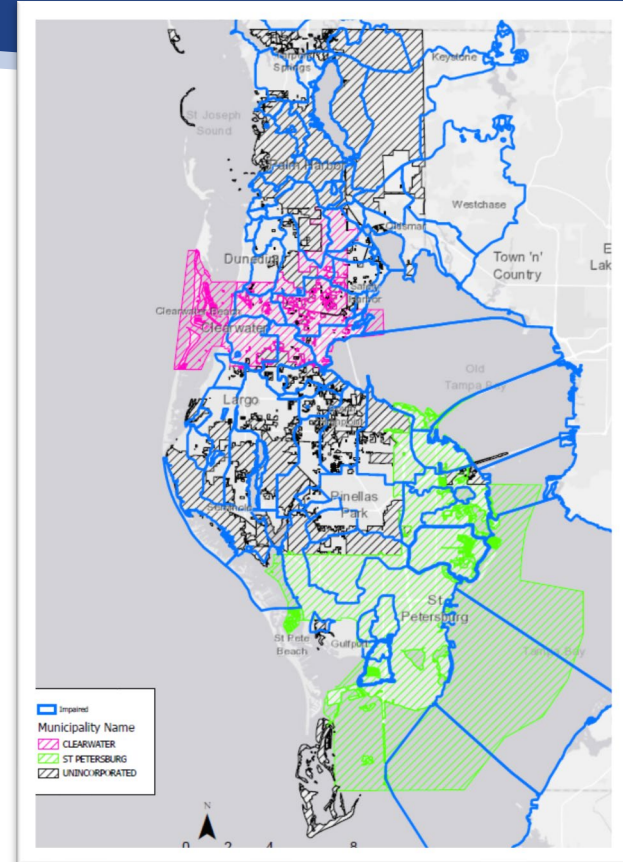




Practice superior environmental stewardship



- **Water Quality**
 - Impaired waters
 - Reasonable Assurance Plans
 - TMDL implementation plans
 - NPDES permit
- **Regional Comparisons**
 - Impervious area exemptions
 - Local differences





Foster continual economic growth and vitality



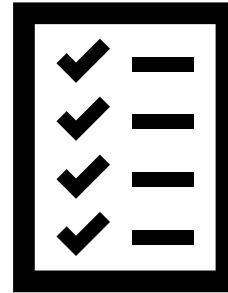
- Exemptions for affordable housing
- Stormwater requirements apply to public and private infrastructure





Deliver first-class services to the public and our customers

- **Utilizing project management principles**
 - **Consistent practices and procedures**
 - **Transparency for applicants and the public**
 - **Predictability in timing and decision-making**
 - **Efficient and effective service delivery**



Stormwater Manual Amendments



- **Small site constraints**
 - **Increased administrative adjustment and waiver thresholds from 1 acre to 2 acres**
- **Staff level administrative adjustments**
 - **10% on water quality**
- **Design criteria and tools**
 - **Percolation where conditions are appropriate**
 - **CADD design templates**

Stormwater Manual Amendments



- **Water quality alternatives**
 - **10% credit for littoral shelf**
- **Interpretation consistency**
 - **Ensuring the language is clear to both applicants and staff**
- **Affordable housing**
 - **Allowing 1 for 1 replacement**
- **Process improvements**
 - **Project management approach**

