

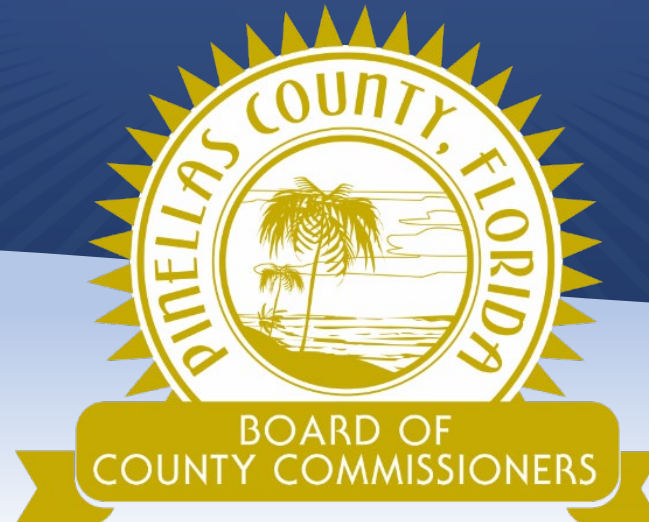
PLANPinellas

Pinellas County Comprehensive Plan Update BCC Transmittal Hearing

Rebecca Stonefield, CPM

Strategic Initiatives Manager

Planning Division



Our Vision:
To Be the Standard for
Public Service in America.



PLAN **PINELLAS**
envisioning our future

Housing

Jobs/Education

VISION

Livability

Mobility

COMPREHENSIVE PLAN UPDATE

- Comprehensive plans updated every 8-10 years
- Last major update in 2008
- Focus document, remove regulatory or repetitive language
- Plan for changing needs



POPULATION

975,280
2018

U.S. Census 2013-2017
ACS 5-Year Estimate



1,008,000
2045

SE Data, Forward
Pinellas



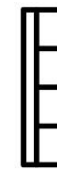
35%
OF ALL COUNTY
HOUSEHOLDS,
ARE COST-BURDENED
OR SEVERELY COST-BURDENED

U.S. Census 2013-2017 ACS 5-Year
Estimate



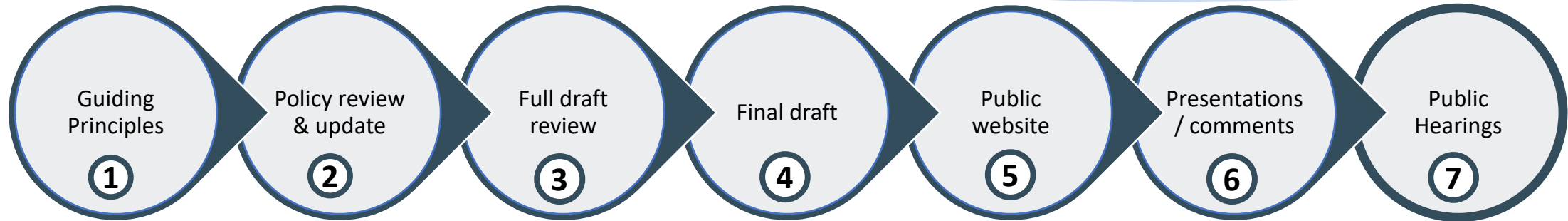
1,560
ACRES TOTAL
OR 0.01% OF THE COUNTY'S
LAND AREA IS VACANT*
*PARCELS ≥ 5 ACRES

Source: Pinellas County Housing
and Community Development



1"
OF SEA LEVEL RISE
PER DECADE
SINCE 1946 (8" TOTAL)

PLAN Pinellas Process

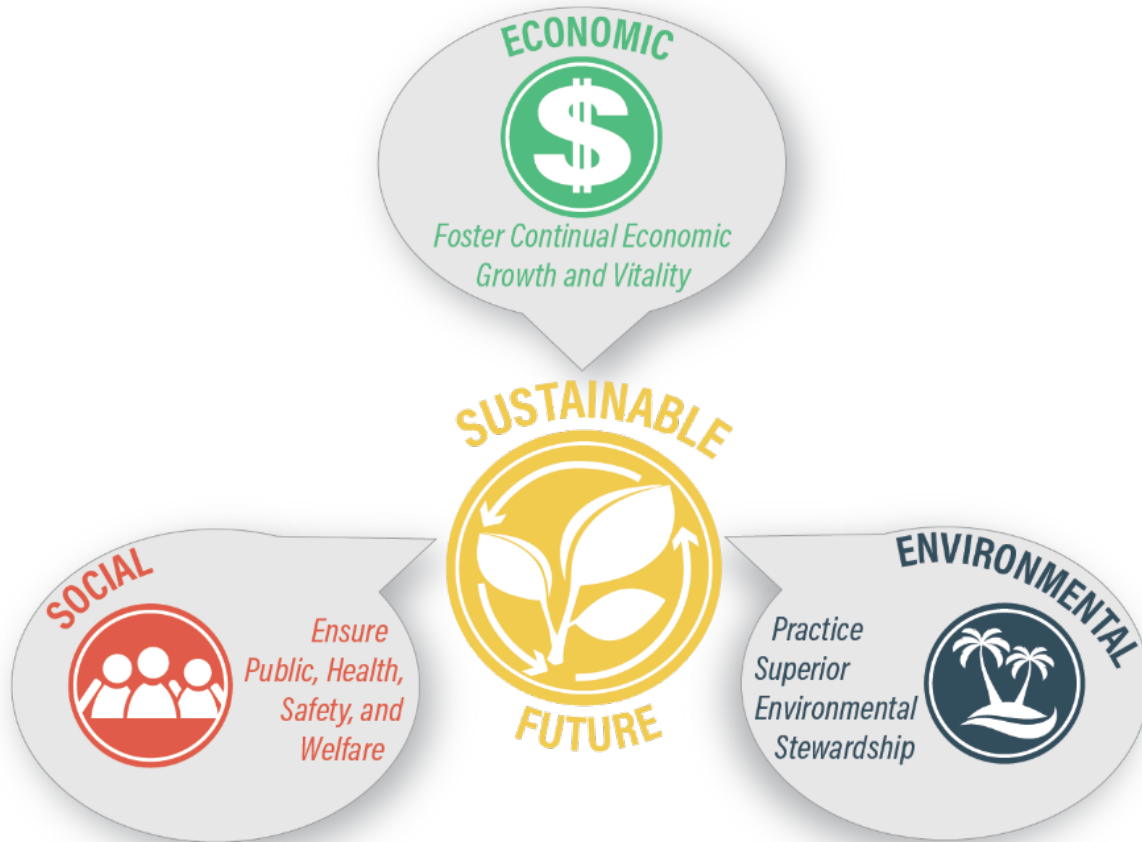


- ① Defined Guiding Principles (set vision/foundation)**
- ② Coordinated chapters with implementing departments**
- ③ Distributed full draft update to all departments for review/comment**
- ④ Worked with departments to finalize draft**
- ⑤ Launched website for public review/comment**
- ⑥ Held public webinars / 'Make A Comment' / Board Work Session**
- ⑦ Hold public hearings (LPA; BCC Transmittal; BCC Adoption)**

CHAPTERS

-  **Future Land Use**
-  **Economic Prosperity**
-  **Housing**
-  **Transportation**
-  **Natural Resources & Conservation**
-  **Coastal Management**
-  **Surface Water Management**
-  **Recreation, Open Space & Culture**
-  **Potable Water & Wastewater**
-  **Solid Waste**
-  **Lifelong Learning**
-  **Governance**

PLAN Pinellas FOCUS



- **Establish Growth Framework**
- **Support Housing Variety**
- **Emphasize Community Planning**
- **Safe and Efficient Mobility**
- **Reduce Risk and Protect Resources**
- **Guide Smart Development**
- **Promote Sustainability and Resiliency**

PLANPinellas Key Comments



Board Work Session (March 3, 2022)

- Role of comprehensive plan
- Reflect 'Housing First' approach
- Ensure 'sound' investments
- Bike facility planning
- Future update Transfer of Development Rights

PLAN Pinellas Key Comments



Forward Pinellas

- Include Target Employment Center boundary map
- Minor edits (add notes to clarify referenced information)

Public Comments Submitted since Local Planning Agency (12/9/21)

- Provide metrics
- Ensure equity
- Protect open space and natural resources

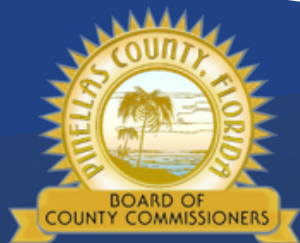
Development Customer Advisory Group (DCAG) Comments (3/25/22)

- Clarify how policy works with regulatory implementation
 - Stormwater Manual/vulnerability assessment
- Clarify need for fiscal impact

- **Requested Action**
 - **Authorize the Housing and Community Development Department to transmit the proposed Ordinance updating and replacing the Comprehensive Plan to the State Department of Economic Opportunity.**

- **Planned Adoption Schedule**
 - ✓ **Nov 8, 2021 – DRC: review/recommendation**
 - ✓ **Dec 9, 2021 – LPA: public hearing**
 - ☐ **May 24, 2022 – BCC: ‘transmittal’ public hearing**
 - ☐ **May/June 2022 – Transmittal to and review by State Agencies**
 - ☐ **October 25, 2022 – BCC: ‘adoption’ public hearing**

Questions?



Our Vision: To Be the Standard for Public Service in America

