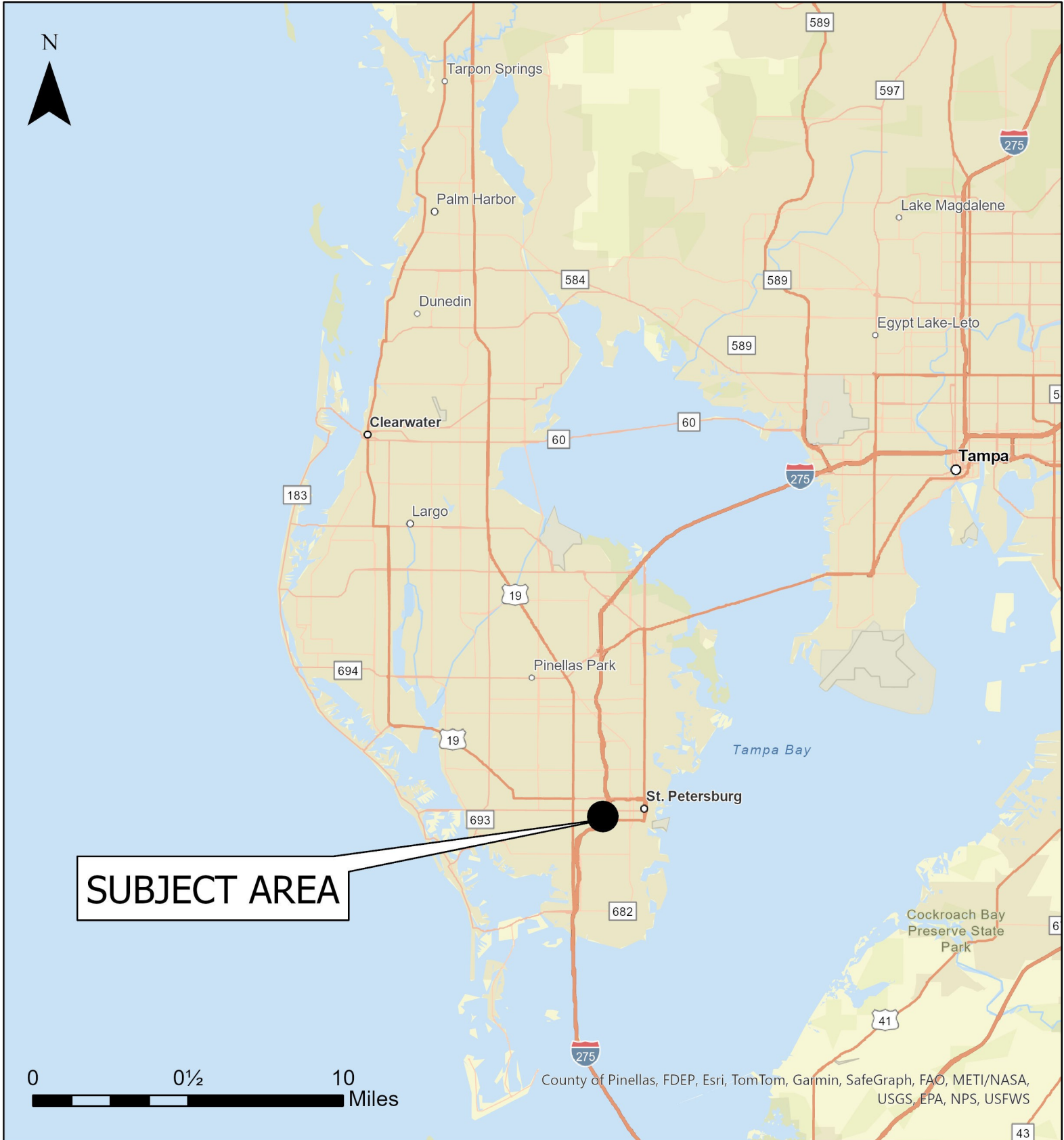


# Case CW24-13

## Map 1: Location Map



**JURISDICTION: St. Petersburg**

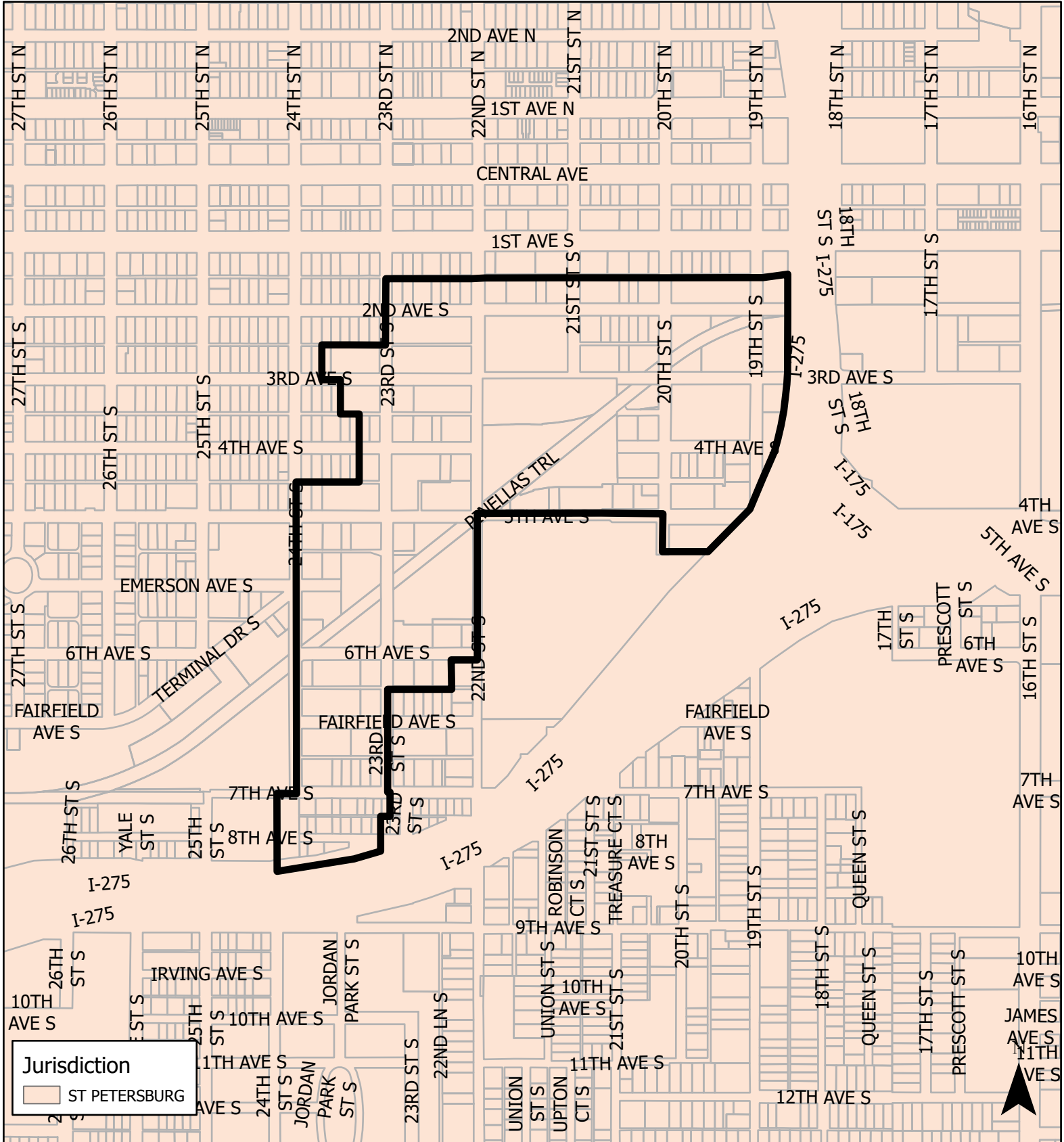
**FROM: Industrial, Activity Center & Target Employment Center**

**AREA: 58 acres m.o.l.**

**TO: Industrial, Activity Center & Target Employment Center**

# Case CW24-13

## Map 2: Jurisdictional Map

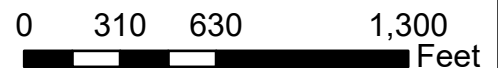


**JURISDICTION: St. Petersburg**

**AREA: 58 acres m.o.i.**

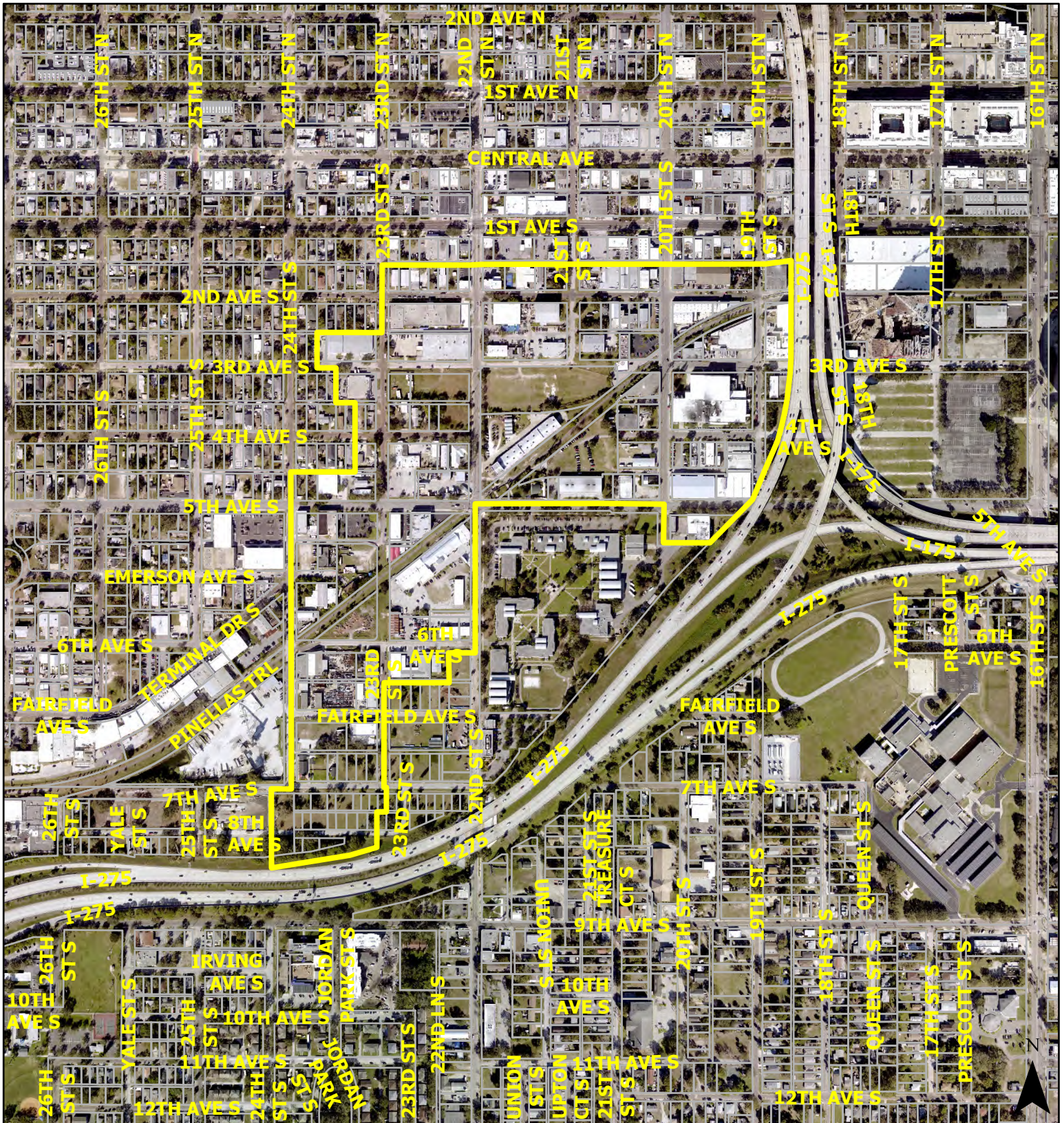
**FROM: Industrial, Activity Center & Target Employment Center**

**TO: Industrial, Activity Center & Target Employment Center**



# Case CW24-13

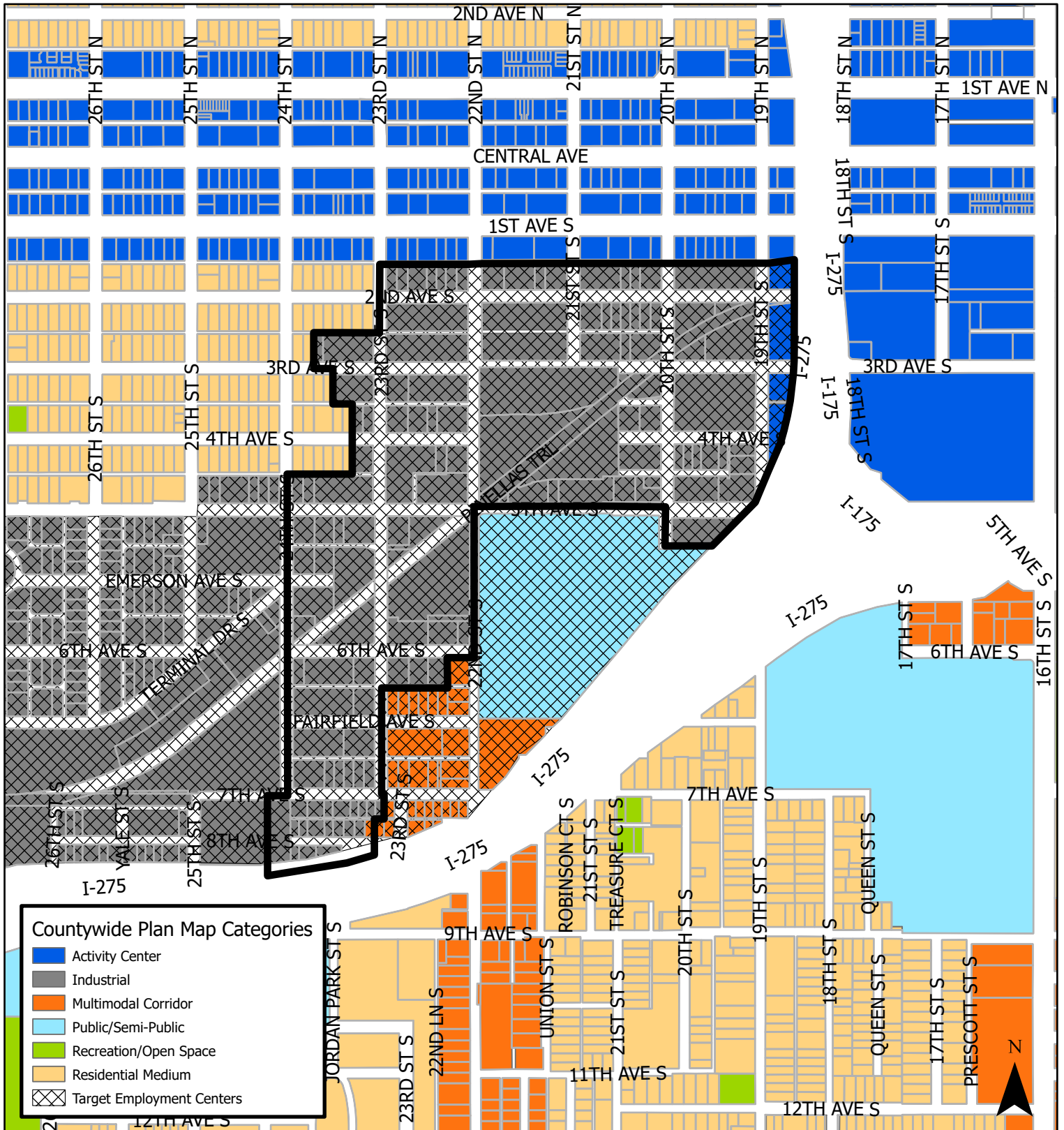
## Map 3: Aerial Map



<b>JURISDICTION:</b> St. Petersburg <b>AREA:</b> 58 acres m.o.l.	<b>FROM:</b> Industrial, Activity Center & Target Employment Center	0    310    620    1,240 Feet
	<b>TO:</b> Industrial, Activity Center & Target Employment Center	

# Case CW24-13

## Map 4: Current Countywide Plan Map



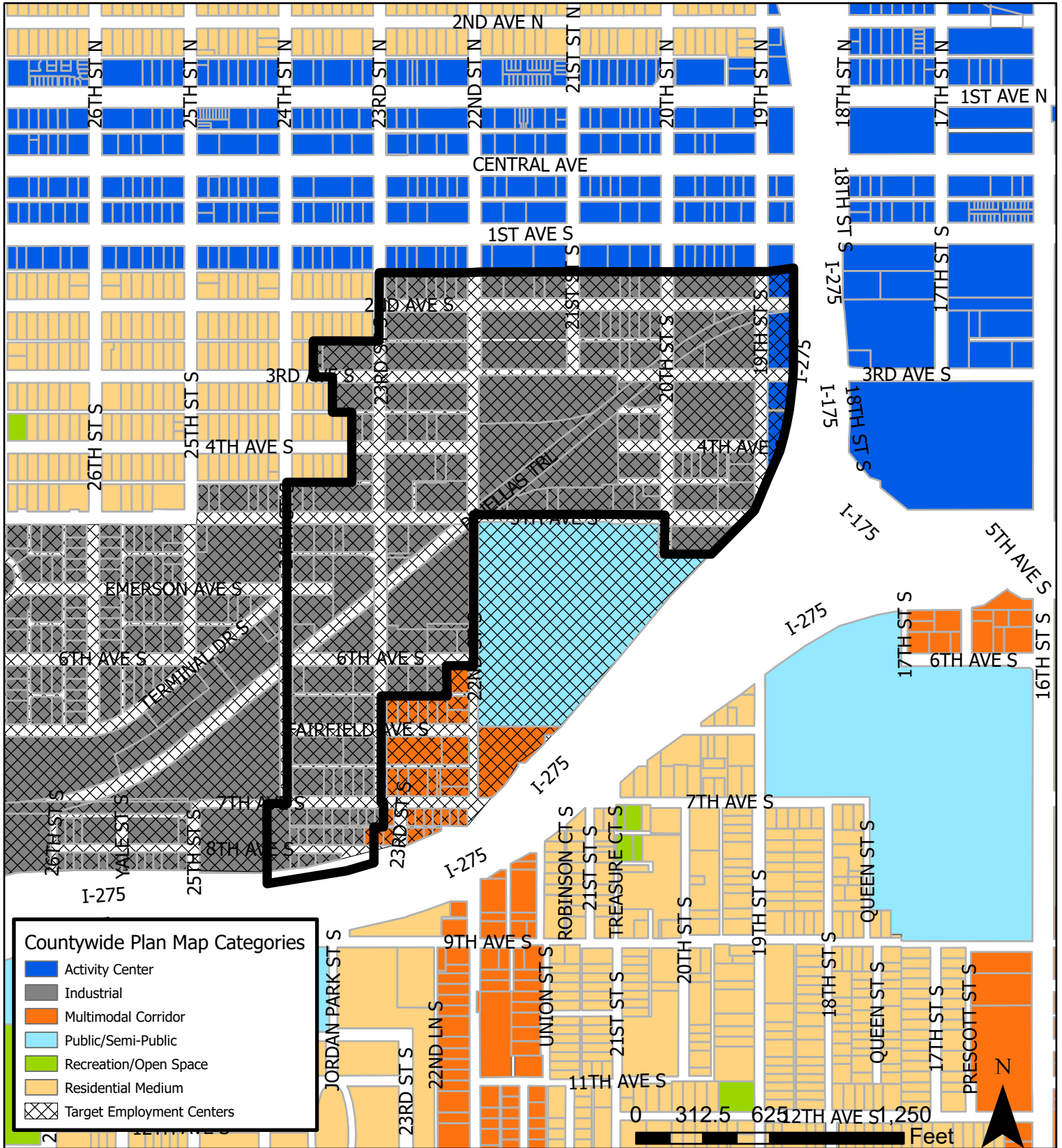
**Countywide Plan Map Categories**

- Activity Center
- Industrial
- Multimodal Corridor
- Public/Semi-Public
- Recreation/Open Space
- Residential Medium
- Target Employment Centers

**JURISDICTION:** St. Petersburg    **FROM:** Industrial, Activity Center & Target Employment Center

**AREA:** 58 acres m.o.l    **TO:** Industrial, Activity Center & Target Employment Center

300    600    1,000  
 Feet



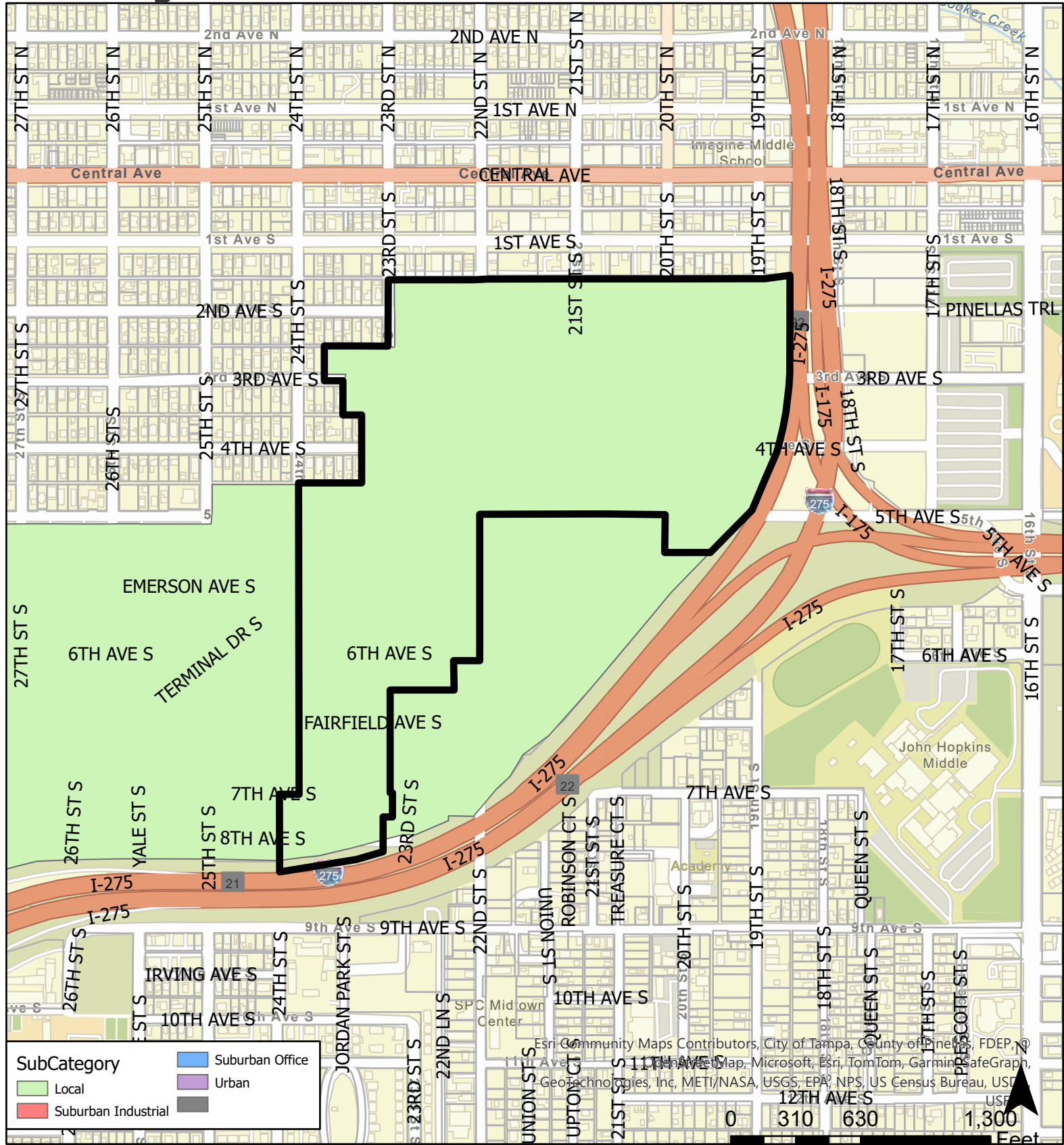
**JURISDICTION: St. Petersburg**

**FROM: Industrial, Activity Center & Target Employment Center**

**AREA: 58 acres m.o.l.**

**TO: Industrial, Activity Center & Target Employment Center**

## Map 6: Target Employment Center Subcategories



**JURISDICTION: St. Petersburg**

**FROM: Industrial, Activity Center & Target Employment Center**

**AREA: 58 acres m.o.l.**

**TO: Industrial, Activity Center & Target Employment Center**