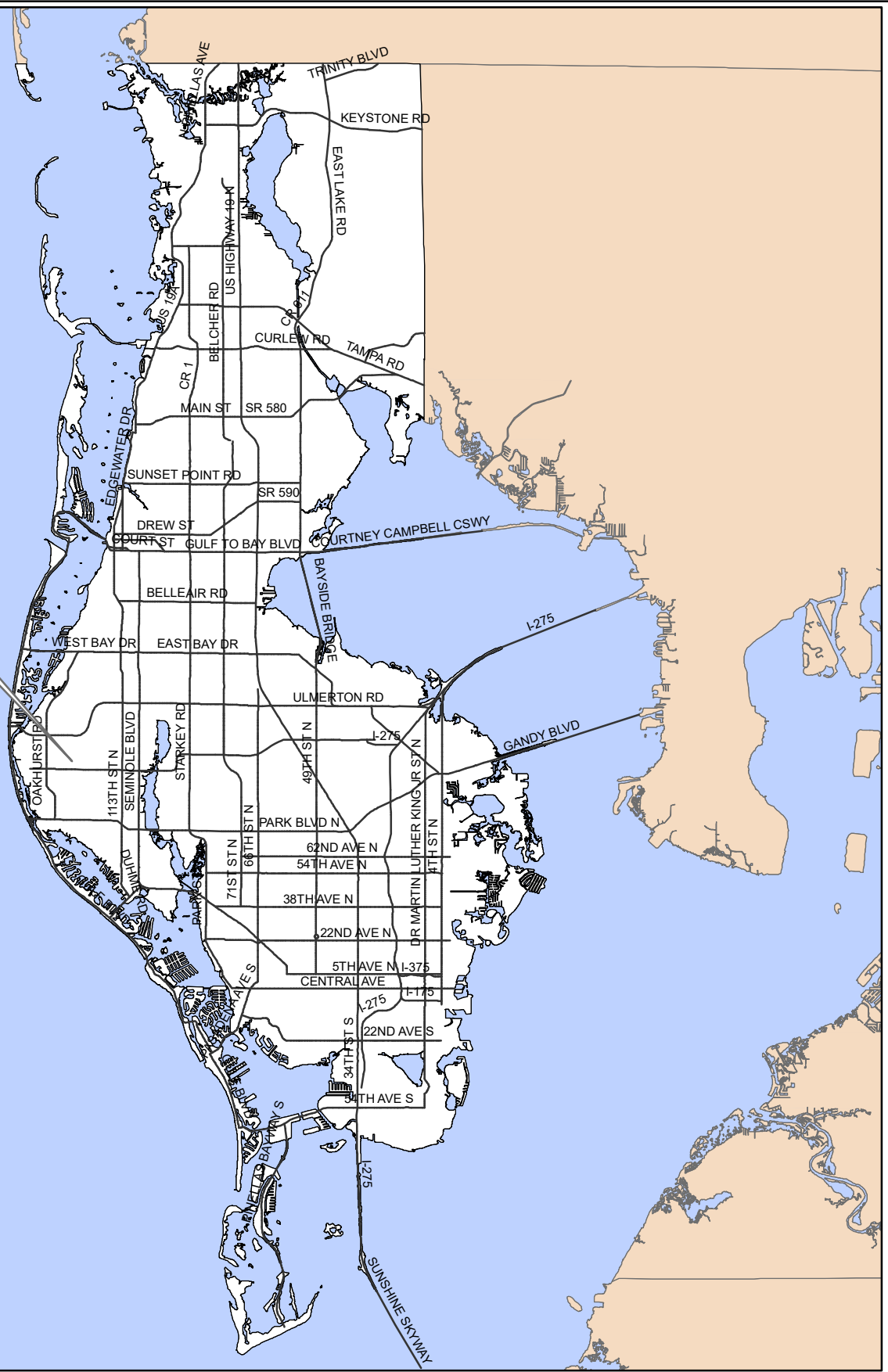


Z/LU-04-02-18



Surrounding Counties

**Z/LU-04-02-18**  
**Location Map**

**Zoning** From: R-R, Rural Residential  
To: IL-CO, Institutional Limited-Conditional Overlay

**Land Use** From: Residential Suburban  
To: Institutional

With Conditional Overlay limiting the use of the property to an assisted living facility.

17/30/15/70632/300/3201

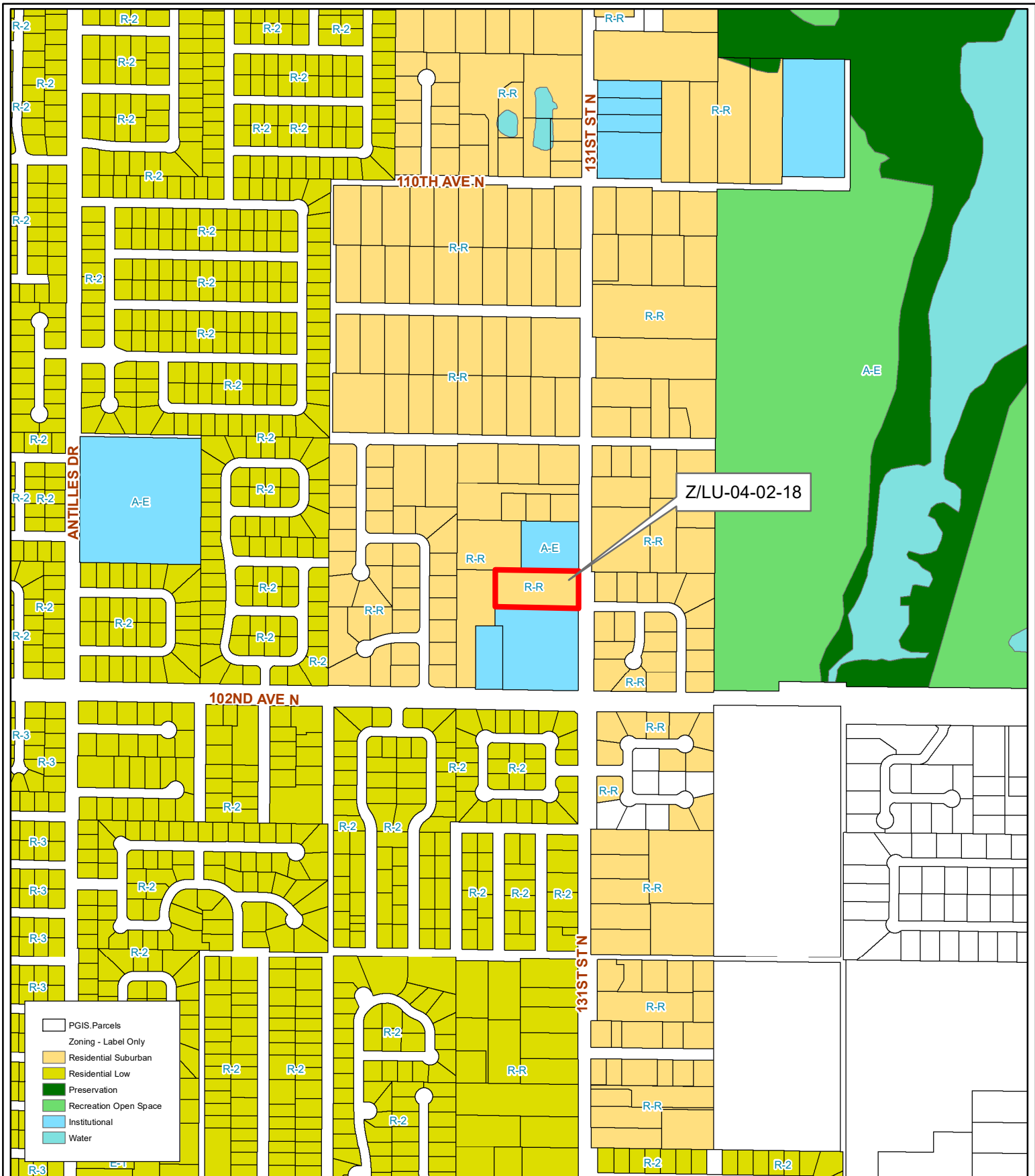
Prepared by: Pinellas County Planning Department



Date: 1/2/2018



1 inch = 4.5 miles



**Z/LU-04-02-18**

**Current Future Land Use & Zoning**

**Zoning**

**Land Use**

**From:** R-R, Rural Residential  
**To:** IL-CO, Institutional Limited-Conditional Overlay  
**From:** Residential Suburban  
**To:** Institutional

With Conditional Overlay limiting the use of the property to an assisted living facility.

17/30/15/70632/300/3201

Prepared by: Pinellas County Planning Department

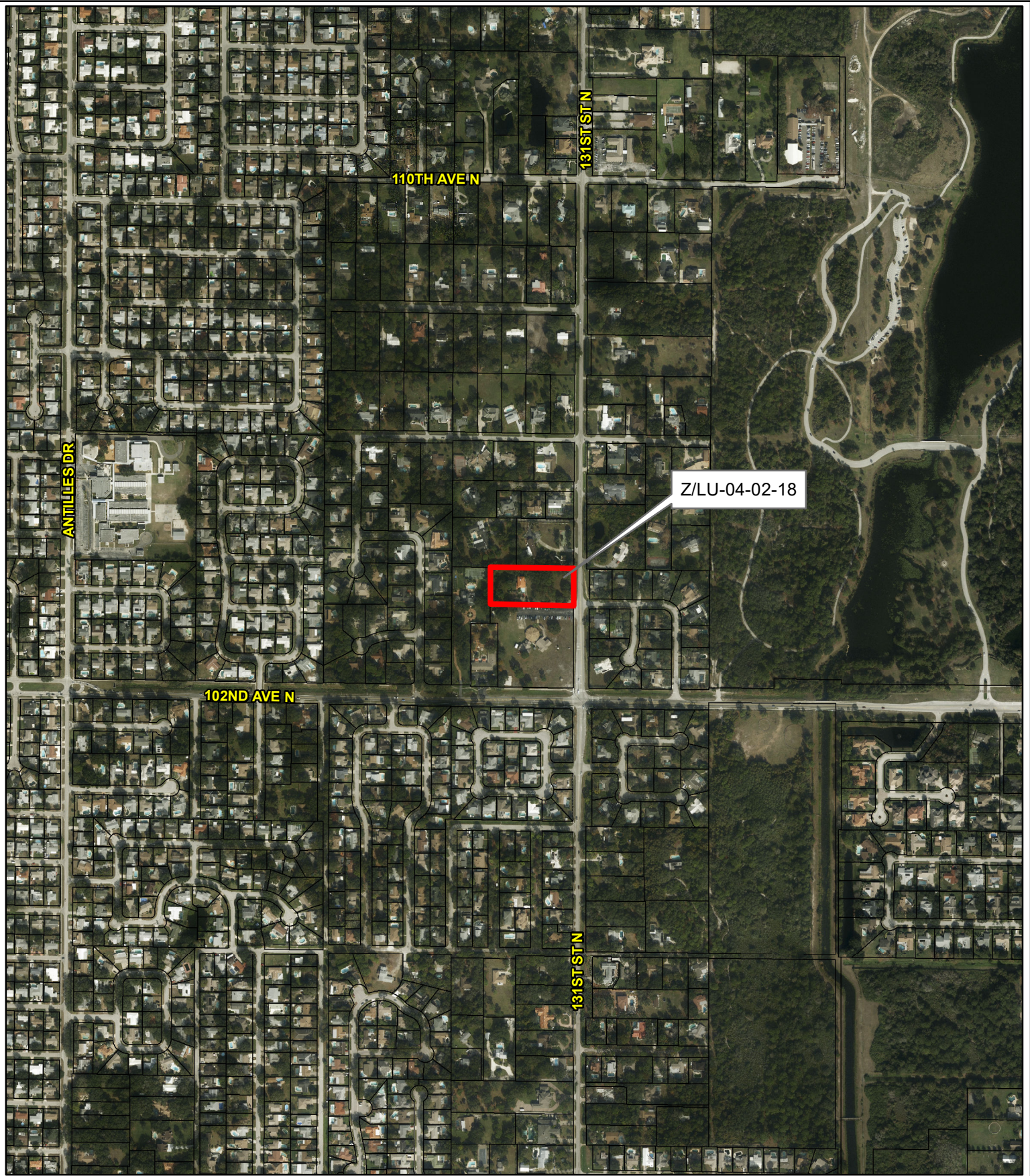


Date: 1/2/2018



1 inch = 0.13 miles





**Z/LU-04-02-18**

**Aerial Map**

**Zoning**

**Land Use**

**From:** R-R, Rural Residential

**To:** IL-CO, Institutional Limited-Conditional Overlay

**From:** Residential Suburban

**To:** Institutional

With Conditional Overlay limiting the use of the property to an assisted living facility.

17/30/15/70632/300/3201

Prepared by: Pinellas County Planning Department

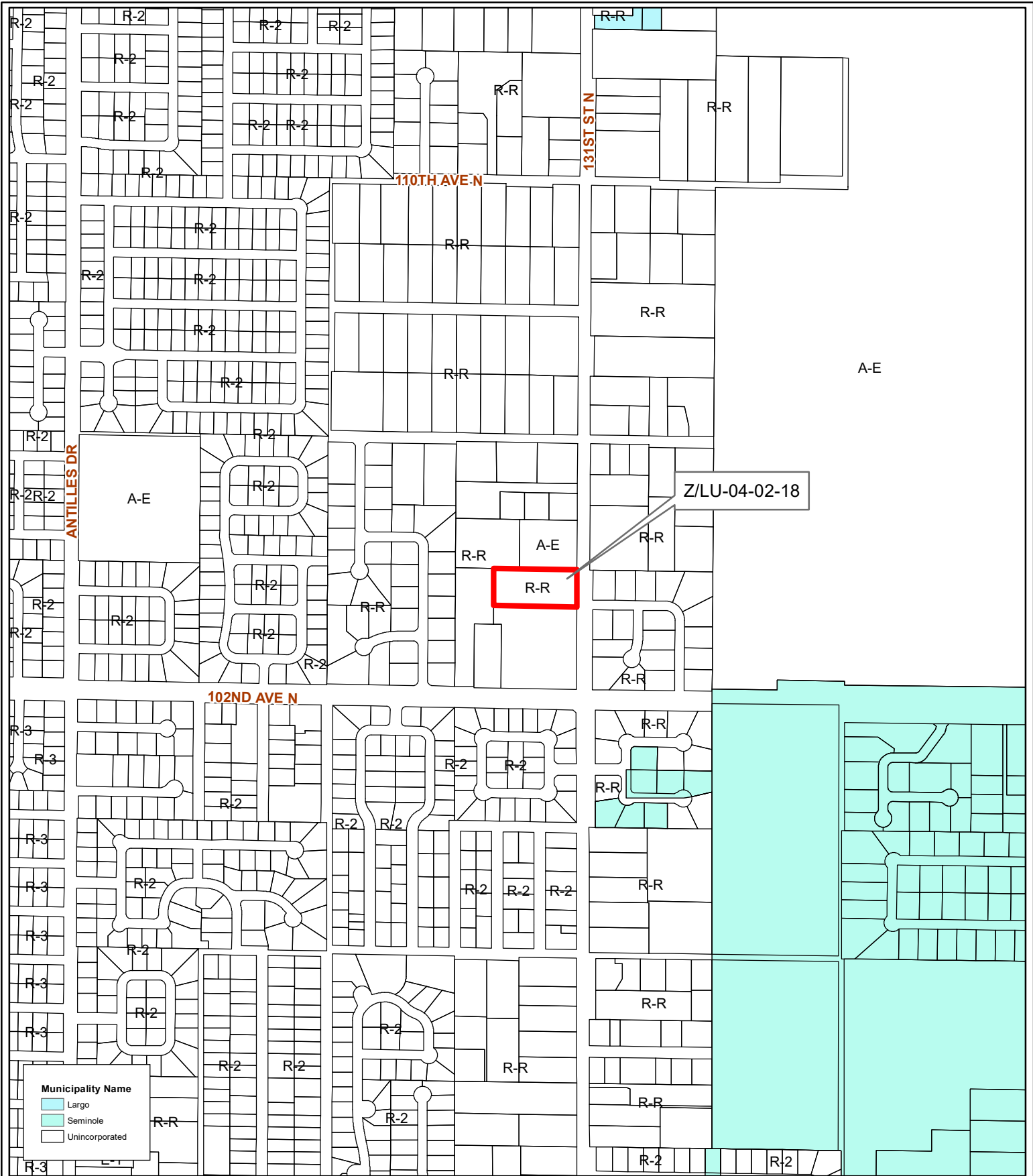


Date: 1/2/2018



1 inch = 0.13 miles





**Z/LU-04-02-18**  
**Municipality Map**

**Zoning** From: R-R, Rural Residential  
 To: IL-CO, Institutional Limited-Conditional Overlay  
**Land Use** From: Residential Suburban  
 To: Institutional  
 With Conditional Overlay limiting the use of the property to an assisted living facility.

17/30/15/70632/300/3201

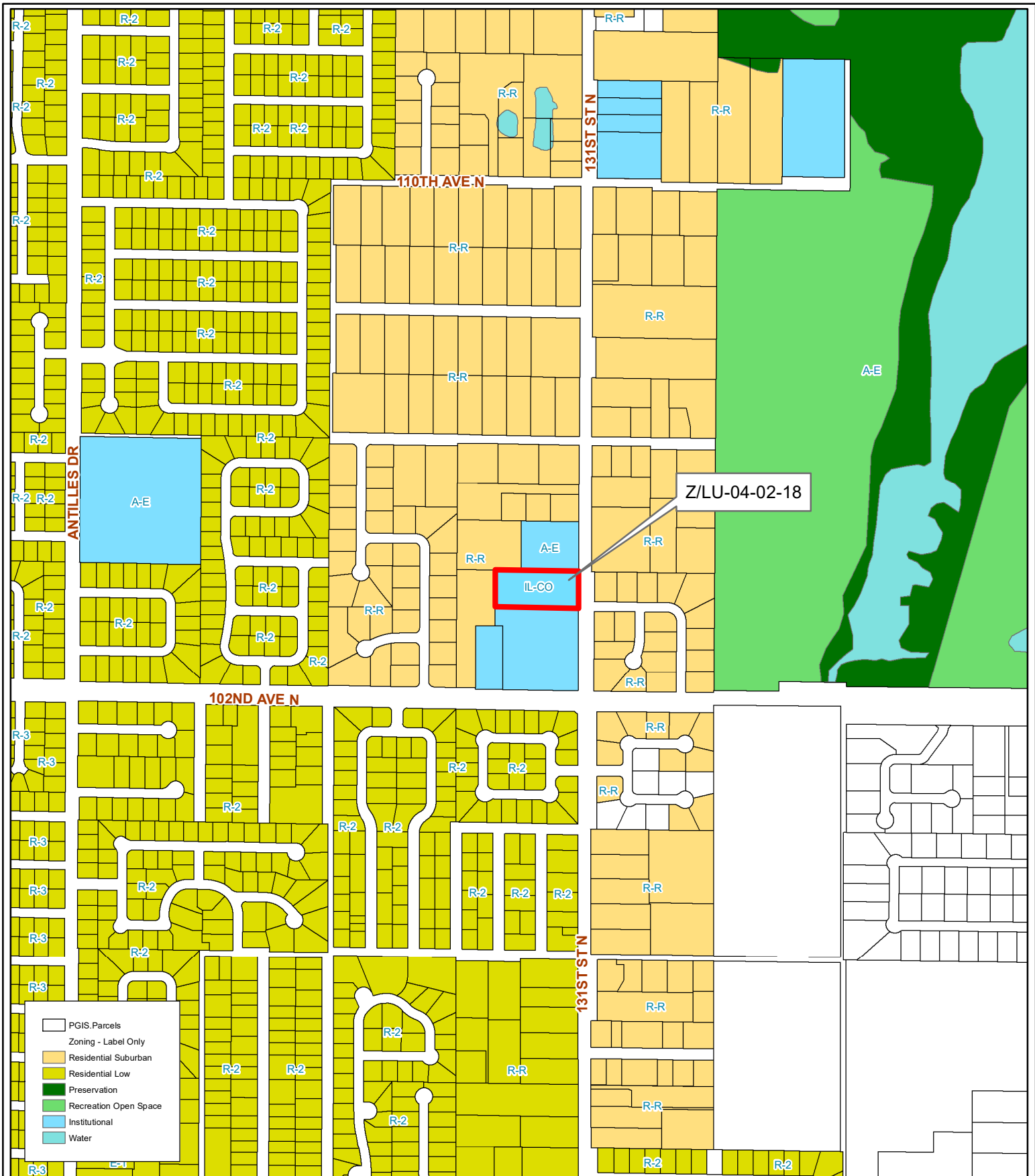
Prepared by: Pinellas County Planning Department



Date: 1/2/2018



1 inch = 0.13 miles



**Z/LU-04-02-18**  
**Proposed Future Land Use & Zoning**

**Zoning** From: R-R, Rural Residential  
 To: IL-CO, Institutional Limited-Conditional Overlay  
**Land Use** From: Residential Suburban  
 To: Institutional  
 With Conditional Overlay limiting the use of the property to an assisted living facility.

17/30/15/70632/300/3201

Prepared by: Pinellas County Planning Department



Date: 1/2/2018



1 inch = 0.13 miles