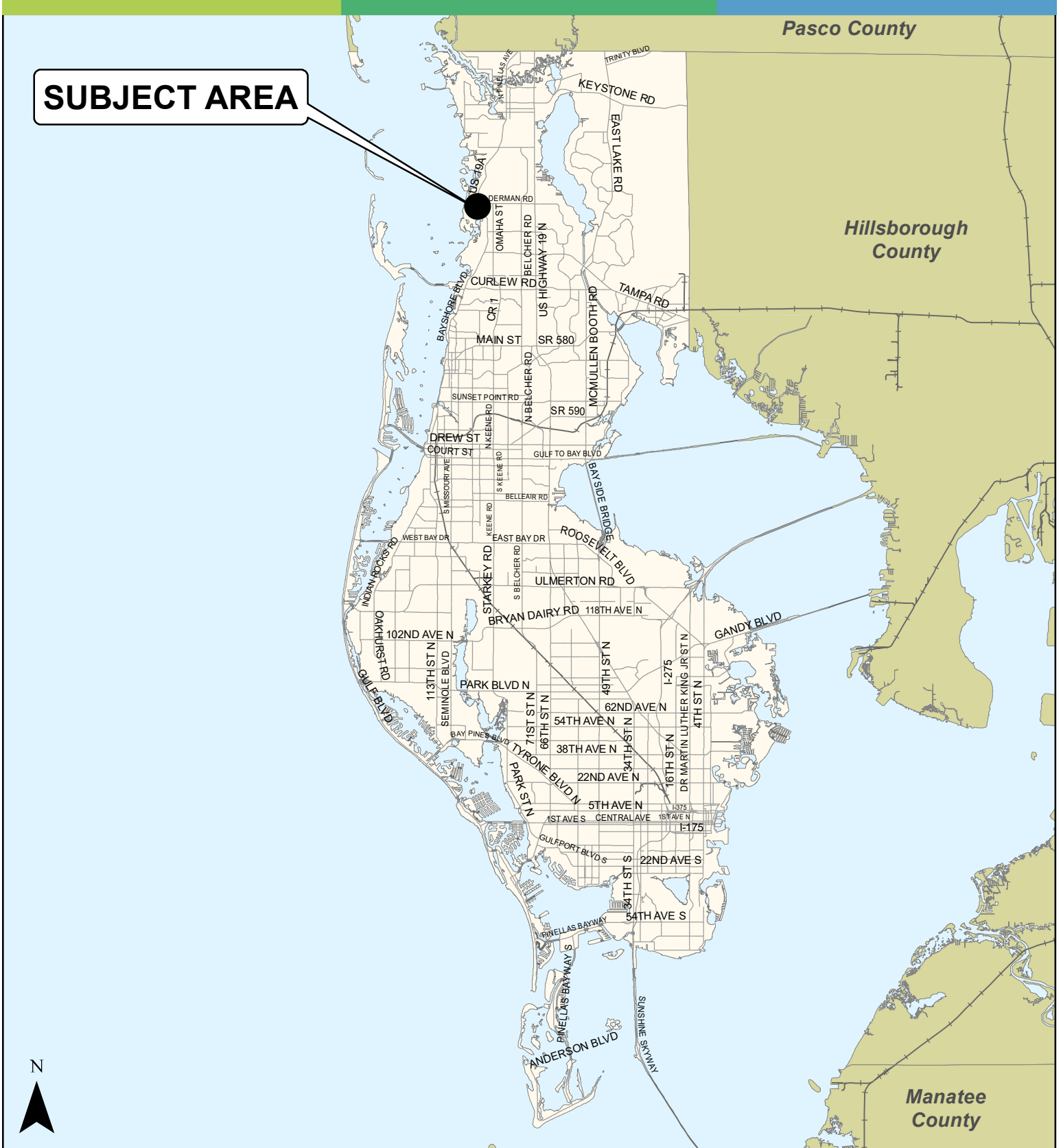


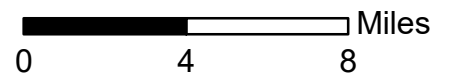
Case CW20-02

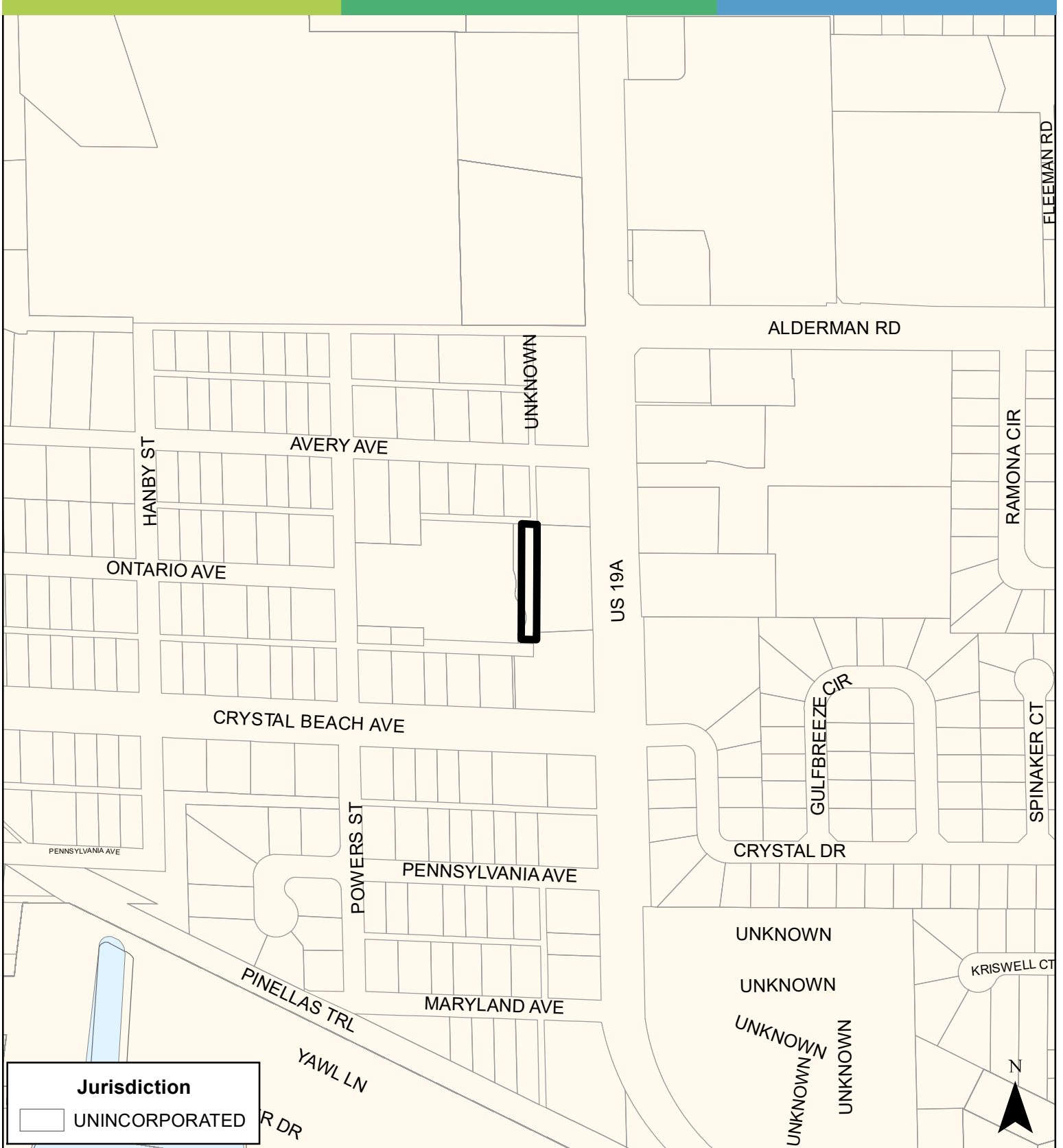
Map 1: Location Map



JURISDICTION: Pinellas County **FROM:** Residential Low Medium

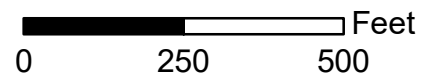
AREA: 0.22 Acres **TO:** Retail and Services





JURISDICTION: Pinellas County **FROM:** Residential Low Medium

AREA: 0.22 Acres **TO:** Retail and Services



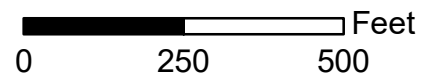
Case CW20-02

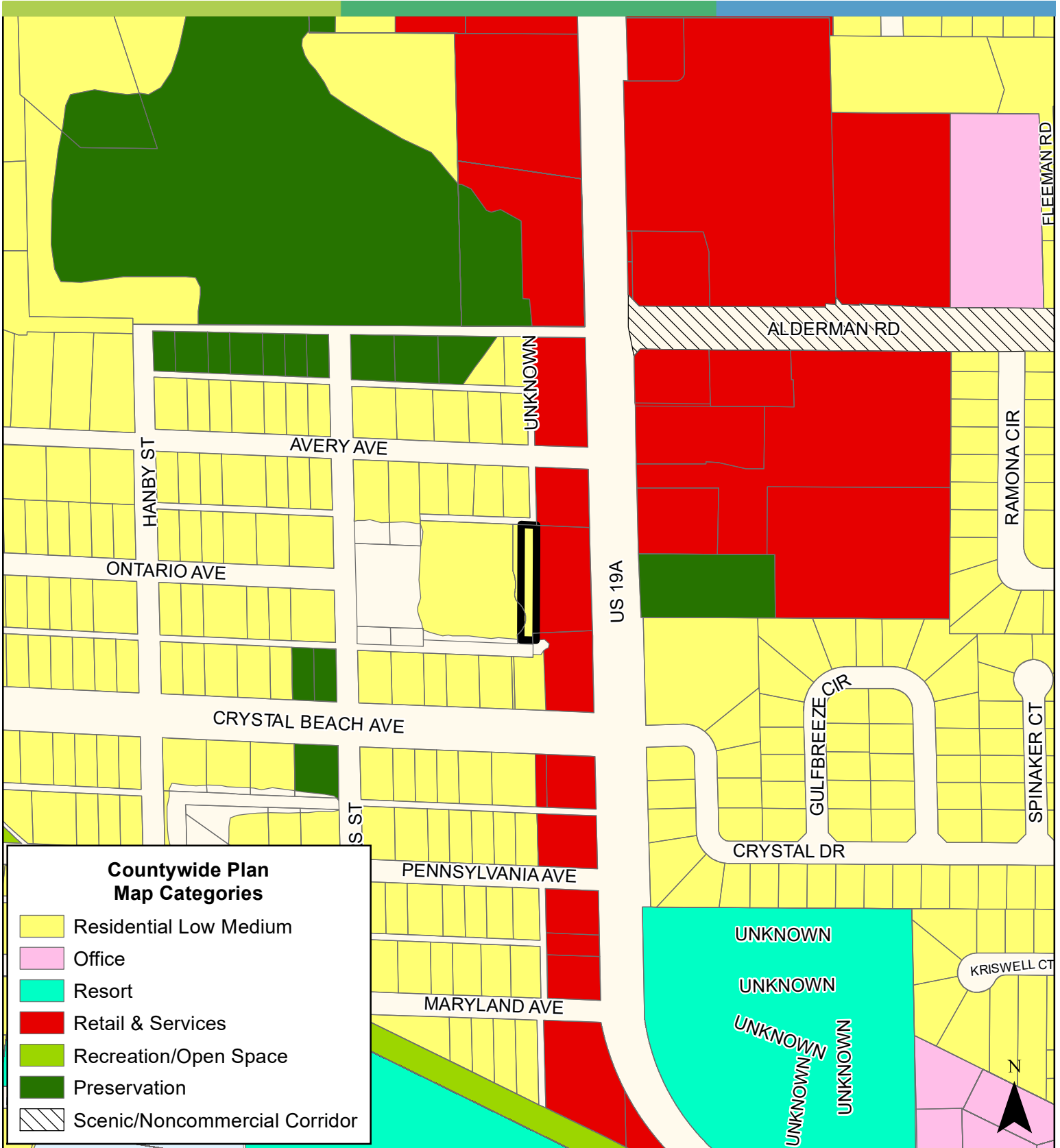
Map 3: Aerial Map

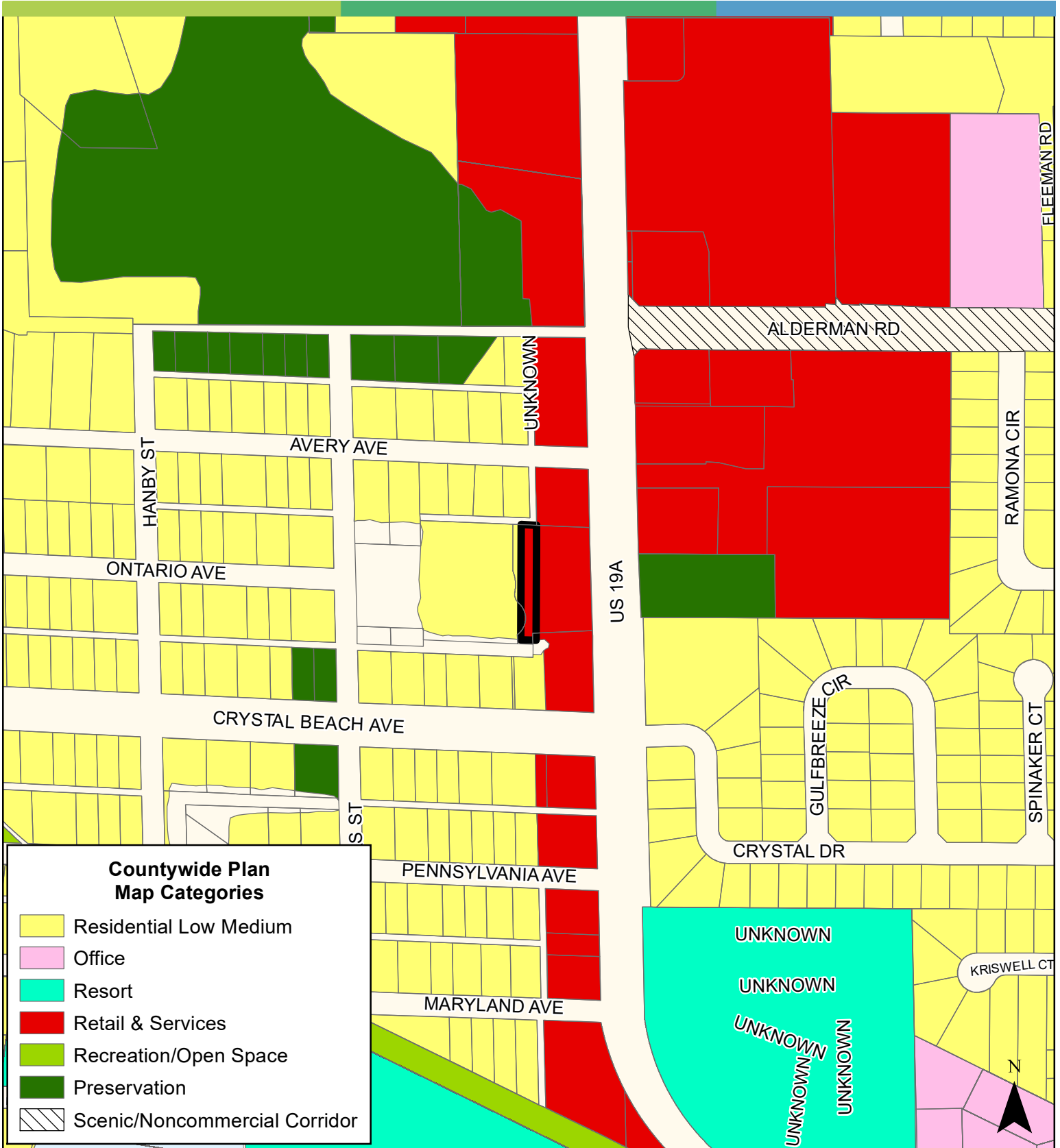


JURISDICTION: Pinellas County **FROM:** Residential Low Medium

AREA: 0.22 Acres **TO:** Retail and Services

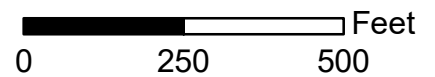


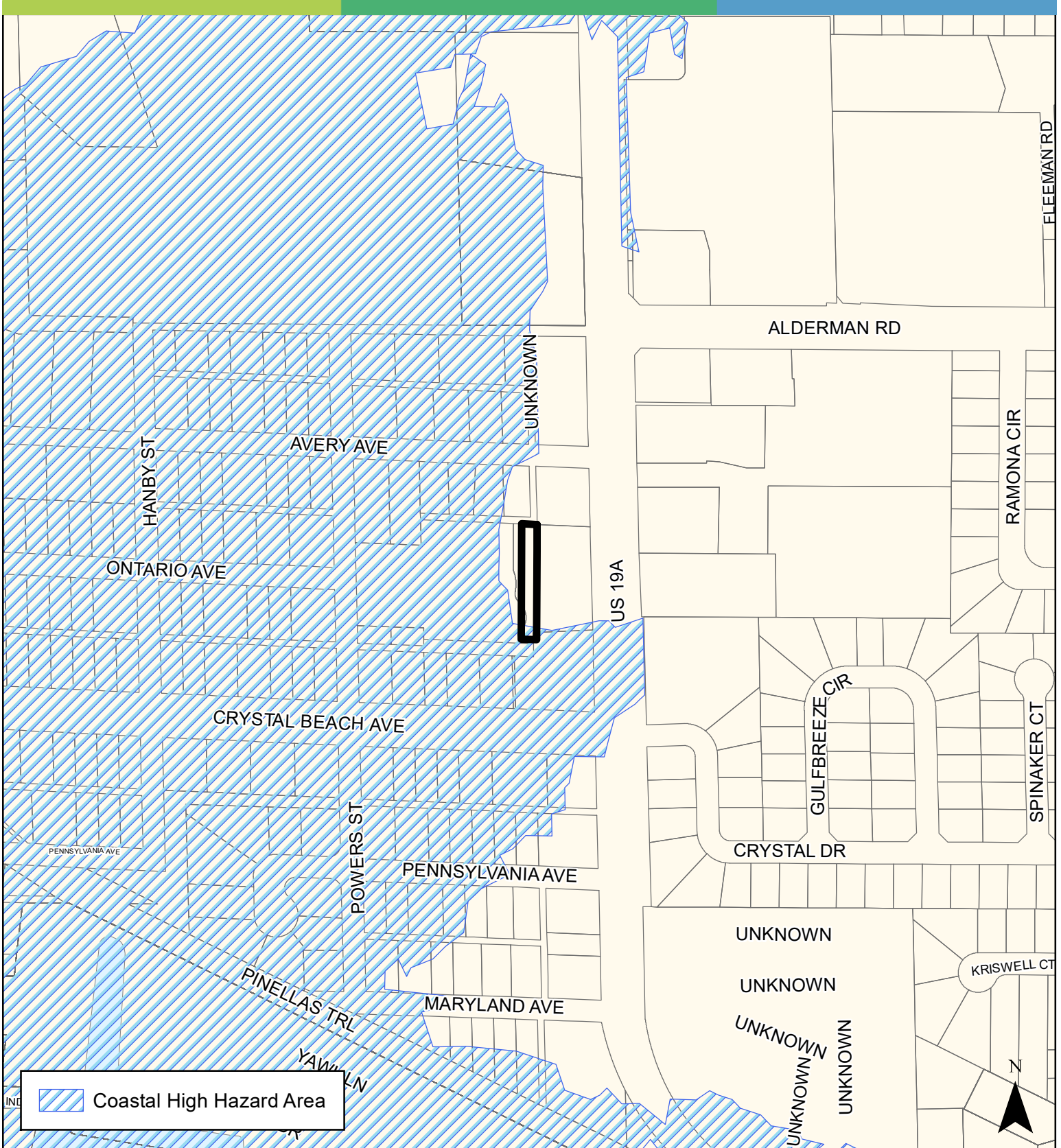




JURISDICTION: Pinellas County **FROM:** Residential Low Medium

AREA: 0.22 Acres **TO:** Retail and Services





JURISDICTION: Pinellas County **FROM:** Residential Low Medium

AREA: 0.22 Acres **TO:** Retail and Services

