



# Doing Things!

**Partner Presentation:**

**Florida Department of Health in Pinellas County**

**June 20, 2017**





**STATE OF THE HEALTH OF  
PINELLAS COUNTY**

**JUNE 20, 2017**

**Ulyee Choe, DO**

Director, Florida Department of Health

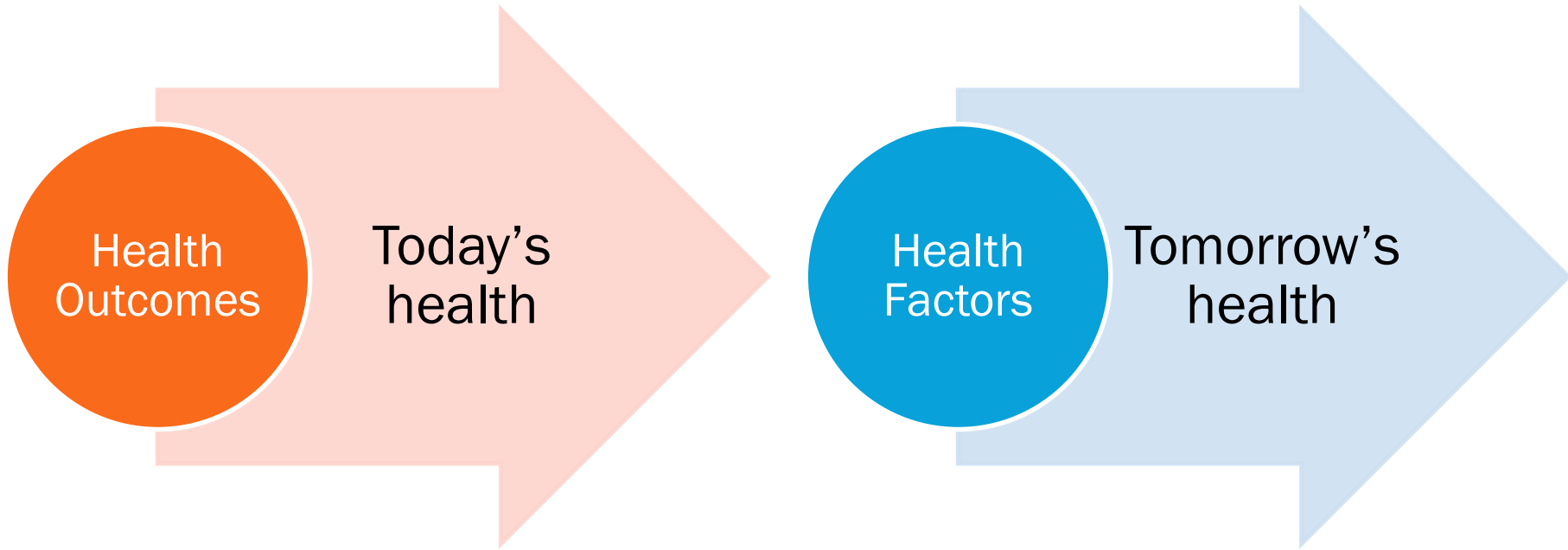
Pinellas County

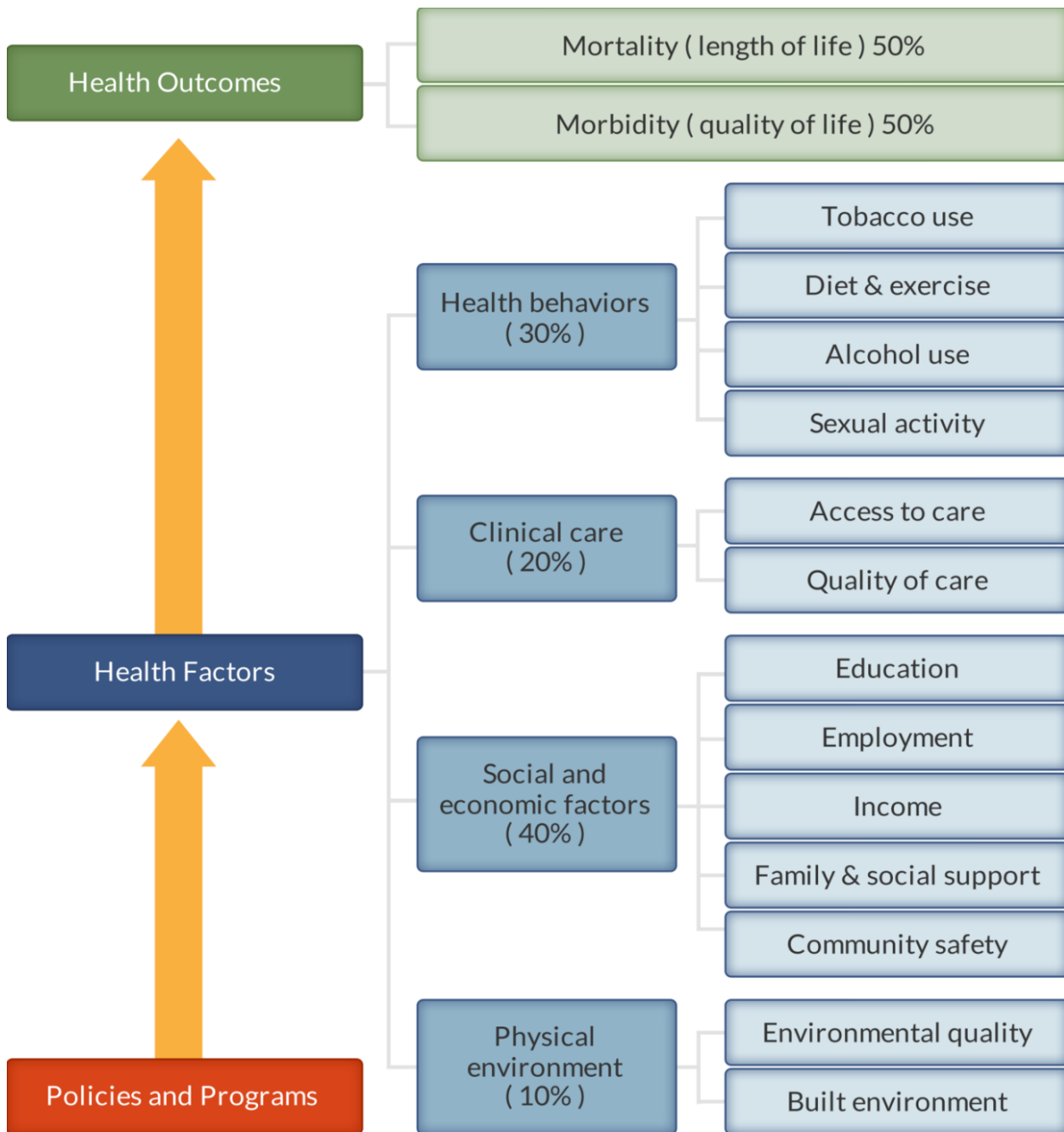
Associate Professor, USF Health

# 2017 COUNTY HEALTH RANKINGS



# COUNTY HEALTH RANKINGS: 2 RANKINGS



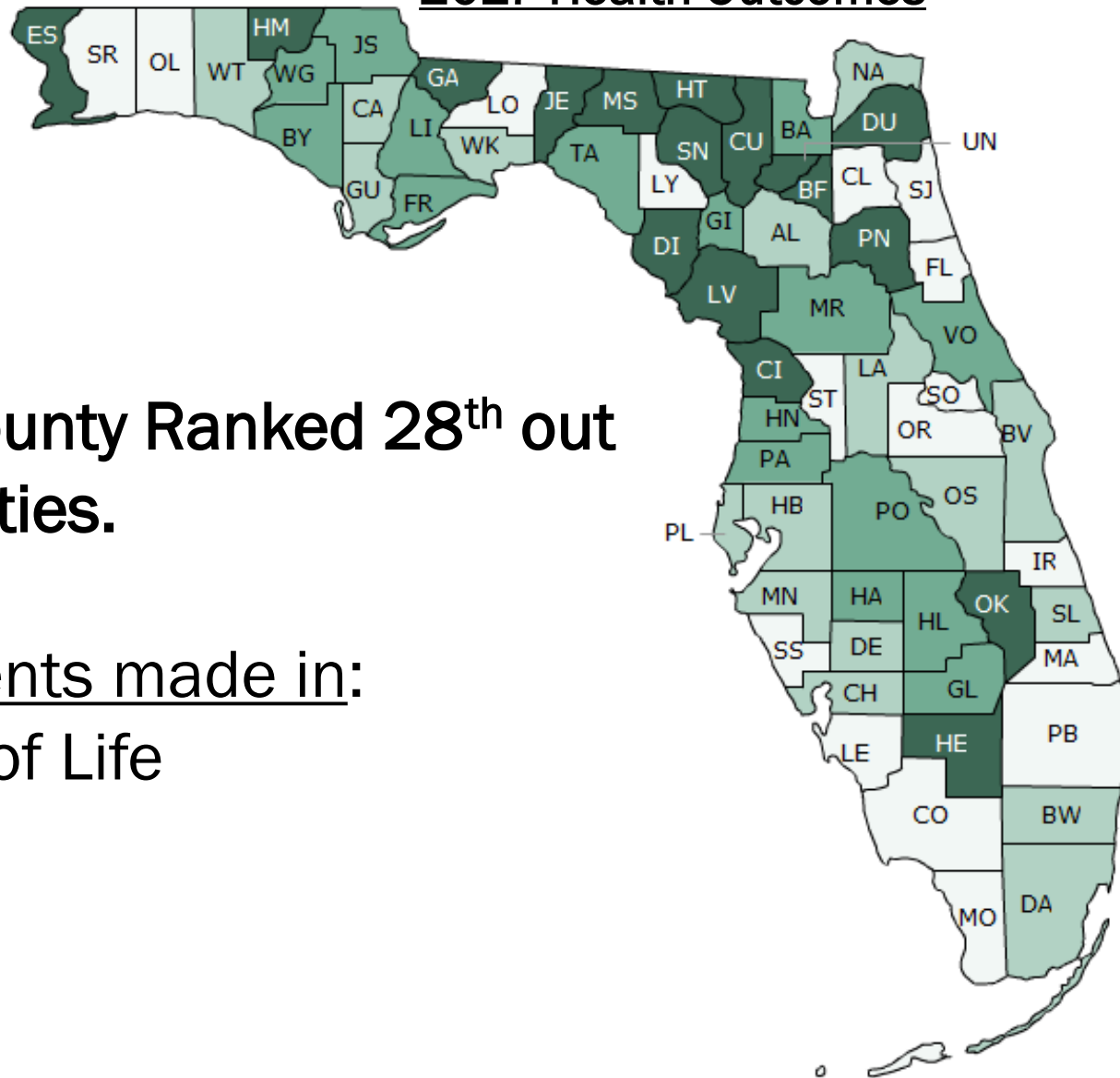


# HEALTH OUTCOMES & MEASURES

MORTALITY AND MORBIDITY

- Length of Life
- Quality of Life

## 2017 Health Outcomes



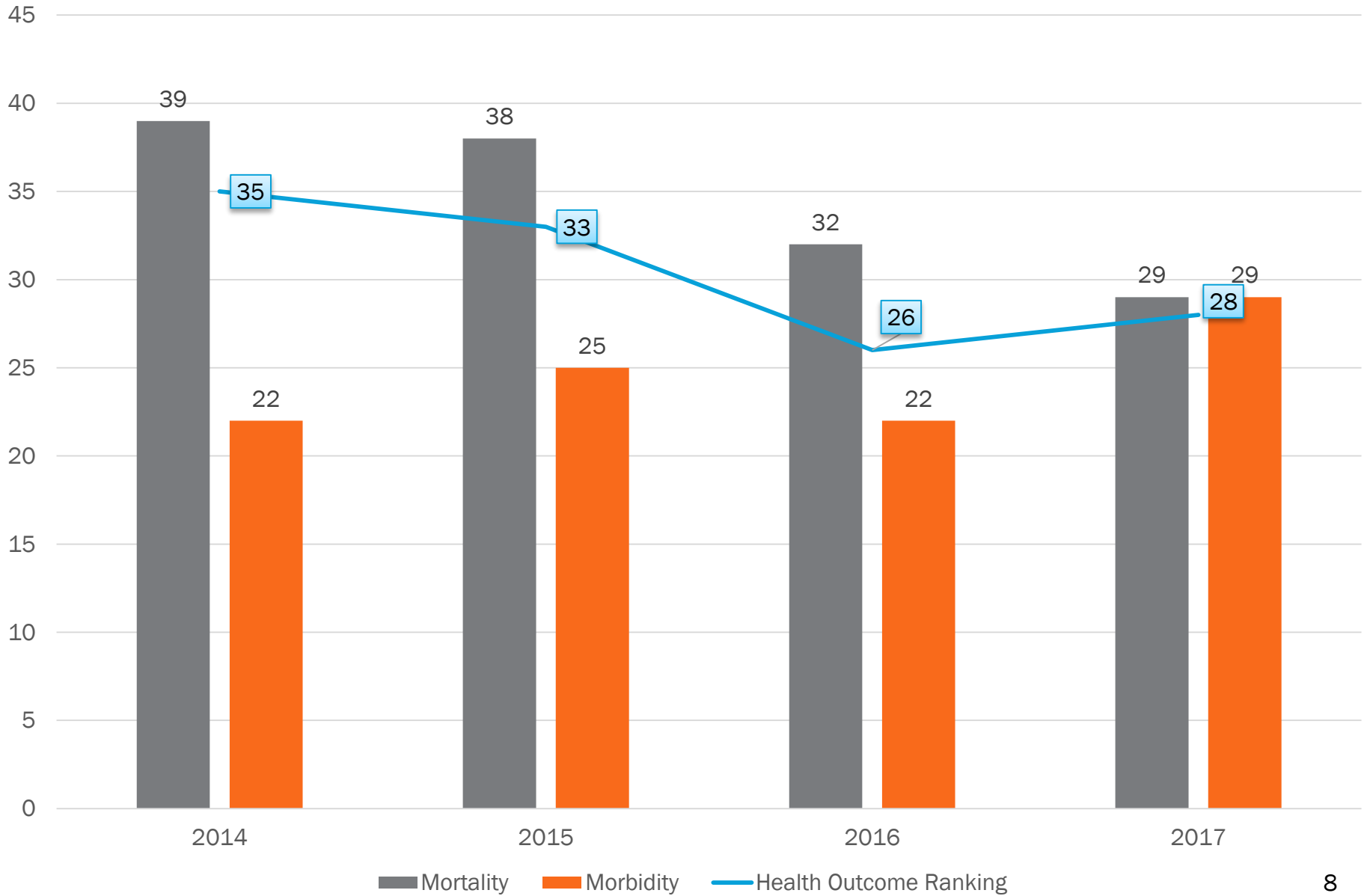
**Pinellas County Ranked 28<sup>th</sup> out of 67 counties.**

Improvements made in:

- Length of Life



# Health Outcomes Trend Line

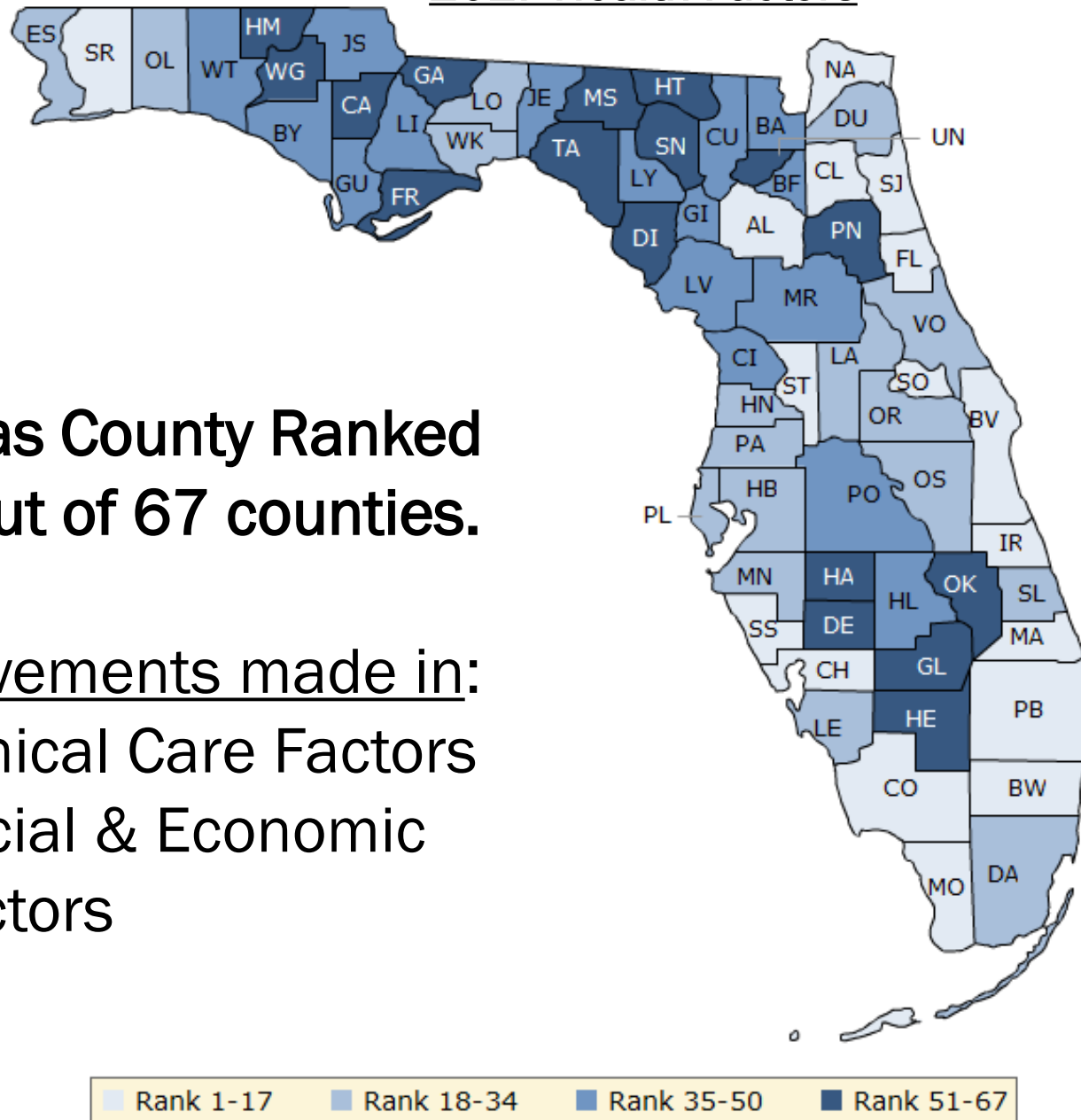




# HEALTH FACTORS & MEASURES

- Health Behaviors
- Clinical Care
- Social and Economic Factors
- Physical Environment

## 2017 Health Factors

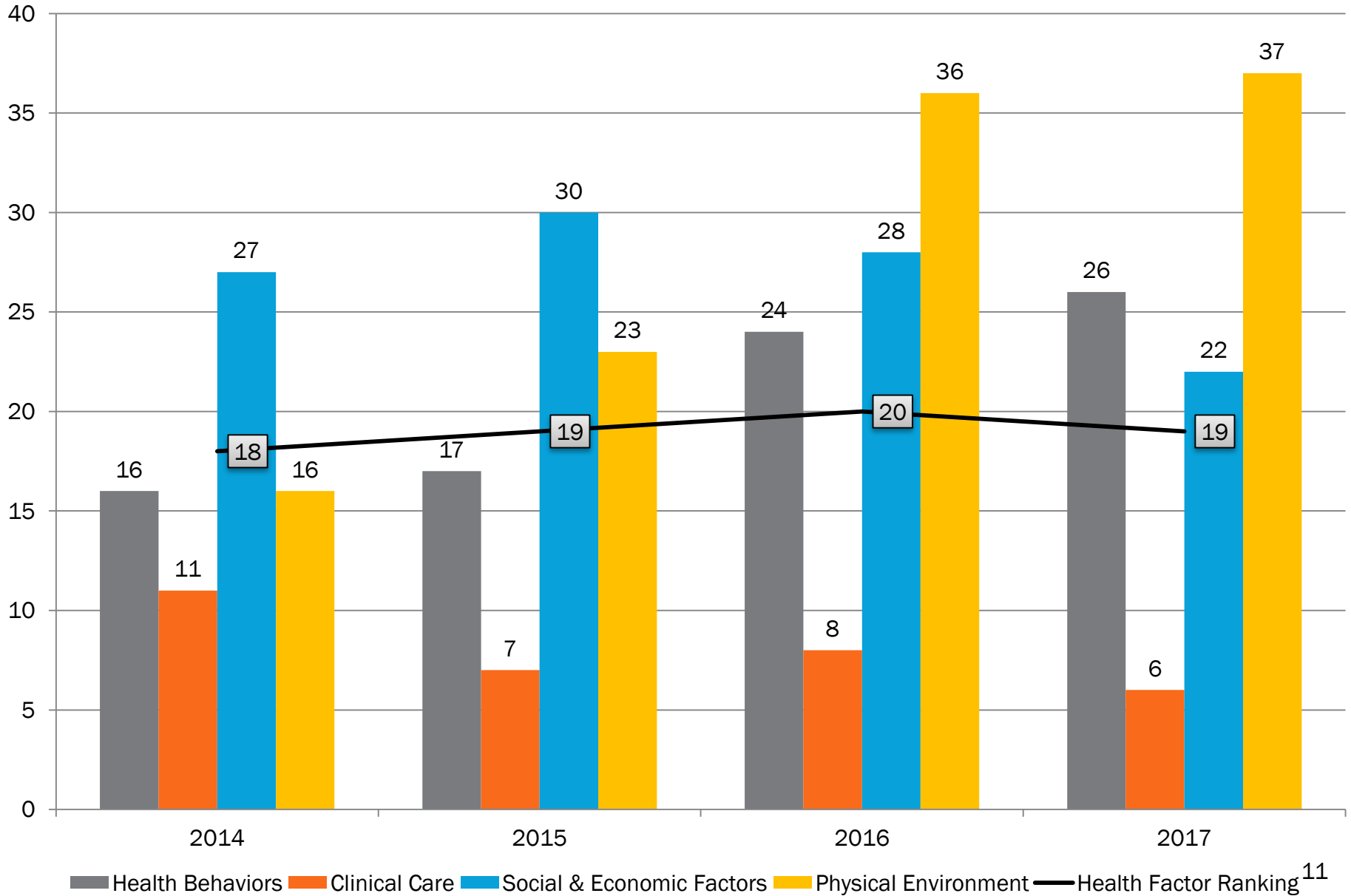


**Pinellas County Ranked  
19<sup>th</sup> out of 67 counties.**

Improvements made in:

- Clinical Care Factors
- Social & Economic Factors

# Health Factors Trend Line



# HEALTH FACTORS & MEASURES

## HEALTH BEHAVIORS

- Smoking
- Obesity
- Access to Exercise
- Sexually Transmitted Infections
- Teen Birth Rates

# ADULT SMOKING

- ❖ Pinellas: 17%
- ❖ Florida: 16%
- ❖ National Benchmark: 14%
- ❖ Tobacco Free Florida, SWAT



# OBESITY

- ❖ Pinellas: 26%
- ❖ Florida: 26%
- ❖ National Benchmark: 26%
- ❖ Healthiest Weight, PICH



# ACCESS TO EXERCISE OPPORTUNITIES

- ❖ Pinellas: 100%
- ❖ Florida: 92%
- ❖ National Benchmark: 91%
- ❖ Fitness Zones



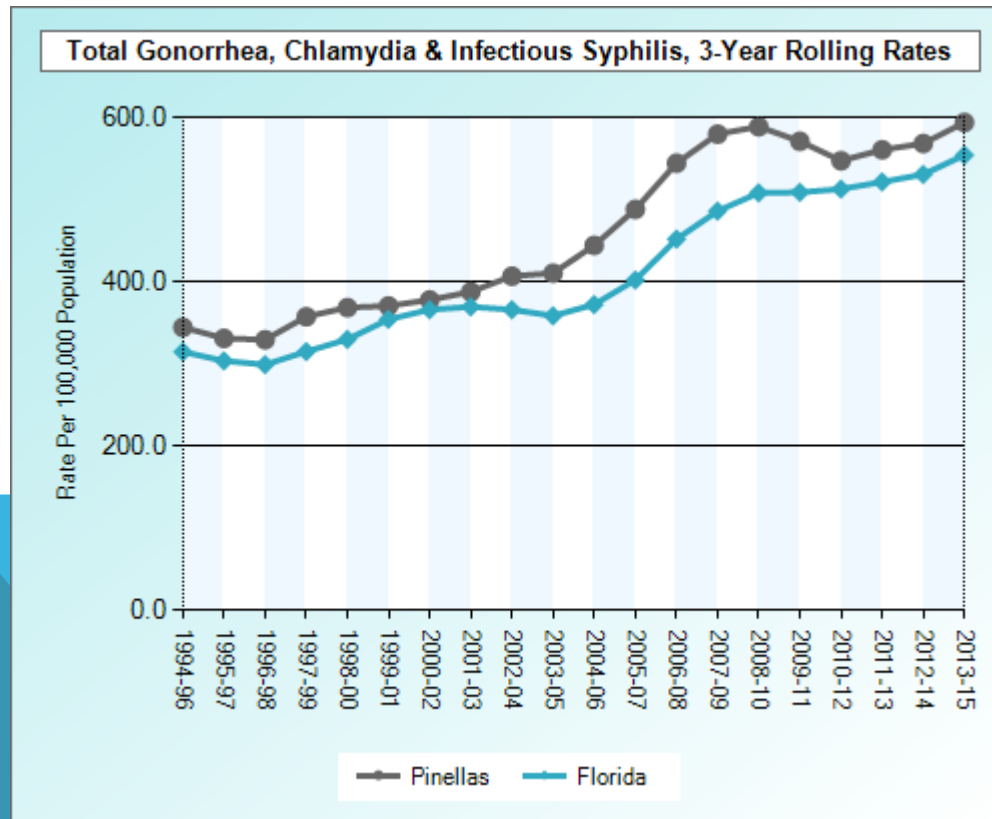
# EXCESSIVE DRINKING

- ❖ Pinellas: 20%
- ❖ Florida: 17%
- ❖ National Benchmark: 12%



# SEXUALLY TRANSMITTED INFECTION RATE

- ❖ Pinellas: 422.6
- ❖ Florida: 430.6
- ❖ National Benchmark: 145.5



# HEALTH FACTORS & MEASURES

## CLINICAL CARE

- Access to Care
- Quality of Care

# UNINSURED ADULTS

- ❖ Pinellas: 18%
- ❖ Florida: 20%
- ❖ National Benchmark: 8%
- ❖ Pinellas County Healthcare Plan

# PRIMARY CARE PROVIDERS

- ❖ Pinellas: 1,110: 1
- ❖ Florida: 1,380: 1
- ❖ National Benchmark: 1,040: 1

# DENTAL PROVIDERS

- ❖ Pinellas: 1,510: 1
- ❖ Florida: 1,790: 1
- ❖ National Benchmark: 1,320: 1



# MENTAL HEALTH PROVIDERS

- ❖ Pinellas: 590: 1
- ❖ Florida: 750: 1
- ❖ National Benchmark: 360: 1

# HEALTH FACTORS & MEASURES

## SOCIAL & ECONOMIC FACTORS

- Education
- Employment
- Income
- Family and Social Support
- Community Safety

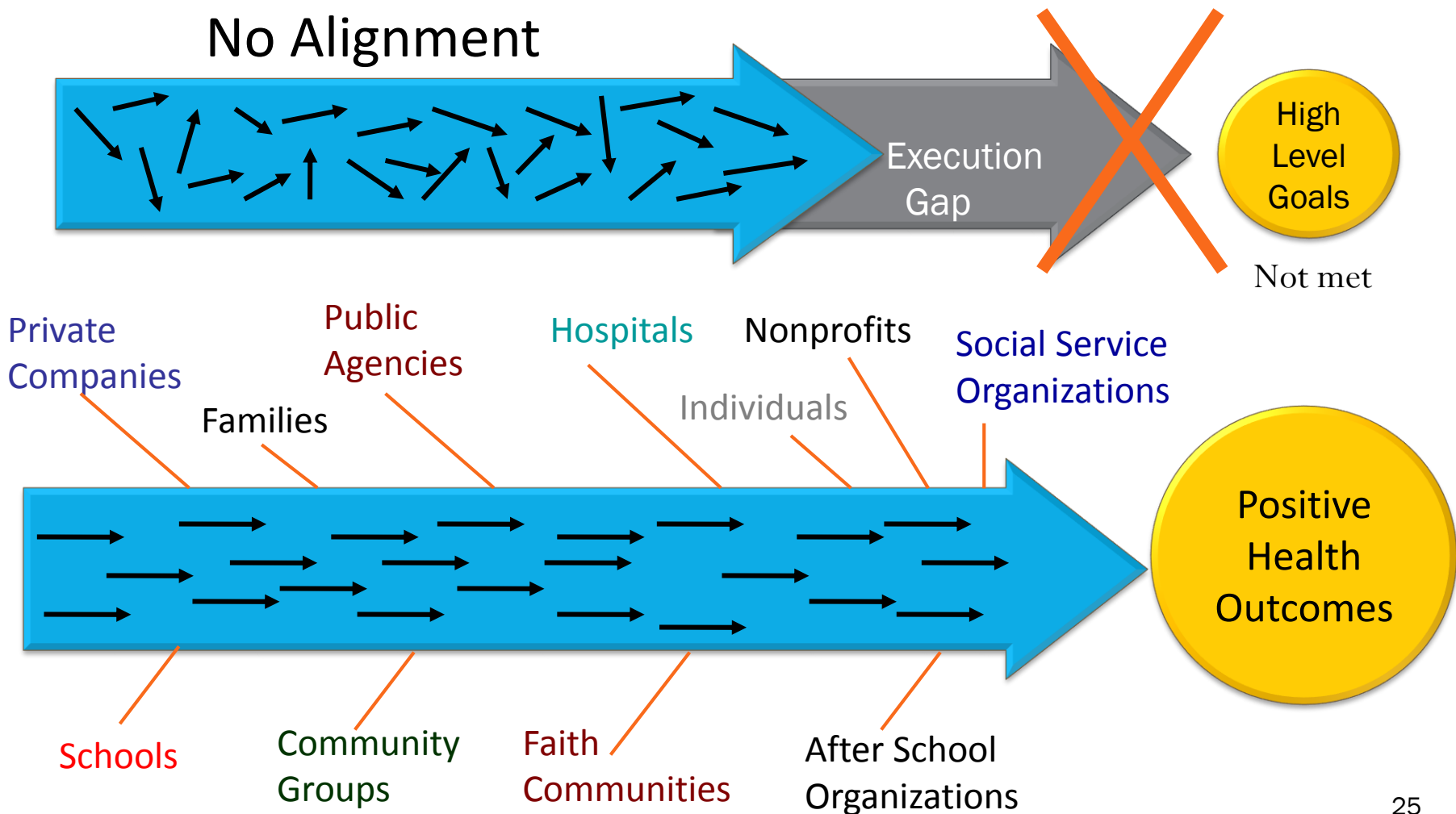
# HEALTH FACTORS & MEASURES

## PHYSICAL ENVIRONMENT

- Environmental Quality
- Built Environment

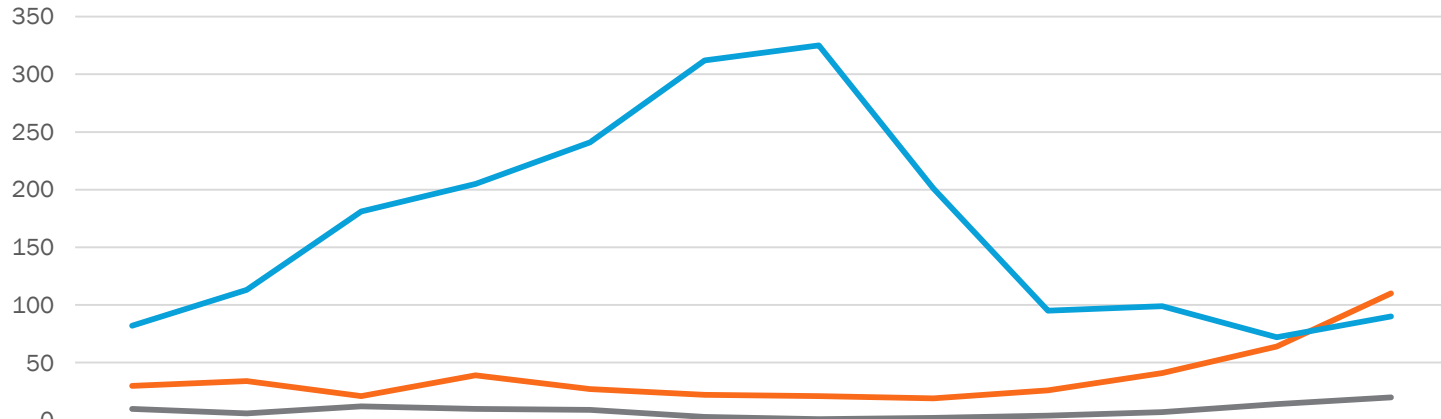


# COMMUNITY ALIGNMENT



# OPIOID-RELATED DEATHS 2005-2016

Heroin, Fentanyl Analogs, and Oxycodone



	2005	2006	2007	2008	2009	2010	2011	2012	2013	2014	2015	2016 Projected
Heroin (6-MAM)	10	6	12	10	9	3	1	2	4	7	14	20
Fentanyl	30	34	21	39	27	22	21	19	26	41	64	110
Oxycodone	82	113	181	205	241	312	325	201	95	99	72	90

Heroin (6-MAM) Fentanyl Oxycodone

Fentanyl analogs identifications in post mortem case currently exceed both oxycodone and heroin

# ZIKA

2016:

Pinellas - 25 travel-related cases, 1 non-travel related

FL - 1122 travel-related cases, 285 non-travel related

2017:

Pinellas - no cases

FL - 55 travel-related cases, 4 non-travel related

Less cases this year

CDC lifted cautionary area in Miami-Dade

Free Zika testing for all pregnant women

Mosquito Control

