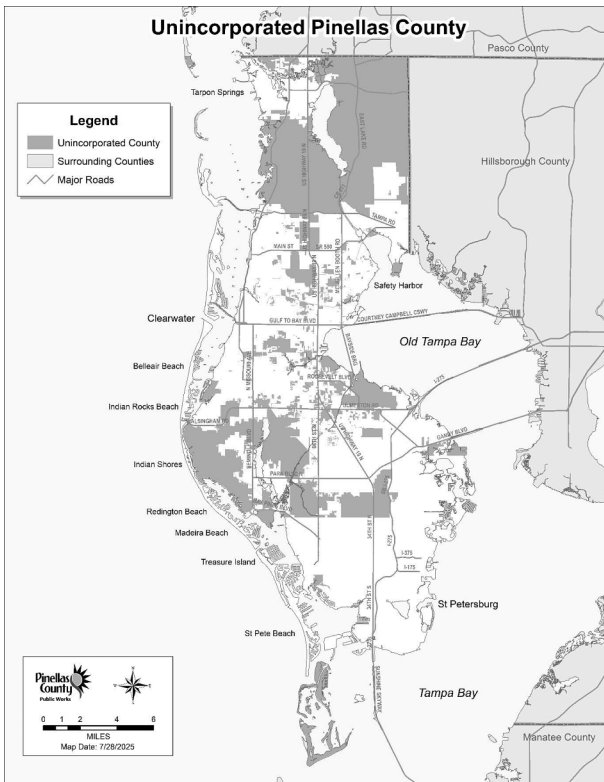


NOTICE OF PUBLIC HEARING

PROPOSED RESOLUTION RELATING TO THE COUNTY'S SURFACE WATER SERVICE ASSESSMENTS AND FEES IN UNINCORPORATED AREAS



All comments on any agenda item received by 5:00 P.M. the day before the meeting will be included as part of the official record for this meeting and will be available to be considered by the County Commission prior to any action taken.

The agenda for this meeting and information about participation options can be found at <https://pinellas.legistar.com/Calendar.aspx>. Interested parties may appear at the hearing or use one of the other methods above to be heard regarding the proposed Resolution:

A RESOLUTION OF PINELLAS COUNTY, FLORIDA, RELATING TO THE COUNTY'S SURFACE WATER SERVICE ASSESSMENTS AND SURFACE WATER FEES IMPOSED ANNUALLY IN UNINCORPORATED AREAS; PROVIDING FOR RECITALS AND AUTHORITY; PROVIDING FOR AN ASSESSMENT AND FEE RATE FOR FISCAL YEAR 2025-2026 AND A MAXIMUM ASSESSMENT AND FEE RATE FOR FISCAL YEARS SUBSEQUENT THERETO; PROVIDING FOR ESTIMATED SURFACE WATER SERVICE COSTS; PROVIDING FOR THE APPROVAL OF SURFACE WATER ROLLS FOR FISCAL YEAR 2025-2026 AND AUTHORIZING SUCH APPROVAL FOR FISCAL YEARS SUBSEQUENT THERETO; PROVIDING FOR CERTIFICATION OF THE SURFACE WATER ROLL FOR FISCAL YEAR 2025-2026 SURFACE WATER SERVICE ASSESSMENTS AND AUTHORIZING CERTIFICATION FOR FISCAL YEARS SUBSEQUENT THERETO; AND PROVIDING FOR AN EFFECTIVE DATE.

The National Pollutant Discharge Elimination System Stormwater permitting program implemented by the Florida Department of Environmental Protection has mandated Pinellas County (the "County") to implement and fund a comprehensive surface water management program. Surface Water Assessments and Surface Water Fees were established by the County in September 2013 as a dedicated funding source to assist in funding these efforts.

Surface Water Service Assessments and Surface Water Fees help fund the County's Surface Water Management Costs to provide Surface Water Management Services. Surface Water Management Services include: management and administration of the County's Surface Water Utility; surface water program engineering; drainage basin planning; floodplain management; operating and maintaining the County's stormwater facilities; water quality monitoring; billing and collection of Surface Water Assessments and Surface Water Fees, including customer information and educational services and reserves for statutory discounts; and legal, engineering, and other consultant services.

A parcel's assessment or fee is based upon that parcel's impervious area, where 1 Equivalent Residential Unit (ERU) = 2,339 square feet of impervious area. Impervious areas are hard surfaces that contribute runoff to the County stormwater system and receiving waterbodies. Each parcel's Surface Water Service Assessment or Surface Water Fee is calculated annually by inserting the per Net ERU rate, together with any Mitigation Credits awarded, into the Net ERU formula for that Parcel's classification, pursuant to Pinellas County Code Section 58-673 ("Apportionment Methodology").

For Fiscal Year 2026, the Board proposes a 7% increase in the per Net ERU rate, raising it from \$124.91 to \$133.65. The Board further recommends that in subsequent fiscal years, the rate may be increased by no more than 5% annually, provided it does not exceed the proposed maximum rate of \$179.11 unless the Board approves an increase to the maximum rate at a subsequent public hearing.

Notwithstanding any rate increases, certain parcels may see an increase in their assessment or fee due to property changes creating increased impervious area or refinements in the impervious data used to calculate the assessment or fee.

Surface Water Assessments will be collected by the Tax Collector of Pinellas County, pursuant to Chapter 197, Florida Statutes. Failure to pay the Surface Water Service Assessment will cause a tax certificate to be issued against the property or foreclosure proceedings to be instituted, either of which may result in a loss of title to the property. Surface Water Fees will be collected by separate bills sent by the County to Government Property.

A more specific description of Surface Water Service Assessments and Surface Water Fees is set forth in Section 58, Article XVII of the Pinellas County Code. For more information, please contact Environmental Management at (727) 464-8759 or visit <https://pinellas.gov/surfacewater>.

In review of the Resolution above, there may be modifications that arise at the public hearing and/or with other responsible parties.

The proposed Resolution and Surface Water Roll are/will be available for inspection at Pinellas County Board Records Department, 315 Court Street, Fifth Floor, Clearwater, Florida, 33756, as well as the office of the Surface Water Utility Coordinator, located at 22211 U.S. Highway 19 North, Clearwater, Florida 33765. All interested persons may ascertain the amount to be assessed against a parcel of assessed property at the office of the Surface Water Utility Coordinator located at the address above.

Persons are advised that if they decide to appeal any decision made at the meeting/hearing, they will need a record of the proceedings, and, for such purposes, they may need to ensure that a verbatim record of the proceedings is made, which record includes the testimony and evidence upon which the appeal is to be based.

SPECIAL ACCOMMODATIONS

PERSONS WITH DISABILITIES WHO NEED REASONABLE ACCOMMODATIONS TO EFFECTIVELY PARTICIPATE IN THIS PROCEEDING ARE ASKED TO CONTACT PINELLAS COUNTY'S OFFICE OF HUMAN RIGHTS BY E-MAILING SUCH REQUESTS TO ACCOMODATIONS@PINELLAS.GOV AT LEAST THREE (3) BUSINESS DAYS IN ADVANCE OF THE NEED FOR REASONABLE ACCOMMODATION. YOU MAY ALSO CALL (727) 464-4882 (VOICE) OR (727) 464-4062 (TDD). MORE INFORMATION ABOUT THE ADA, AND REASONABLE ACCOMMODATION, MAY BE FOUND AT <https://pinellas.gov/americans-with-disabilities-act-public-accommodations/>.

The Pinellas County Board of County Commissioners ("Board"), the local governing board administering Surface Water Assessments and Surface Water Fees, proposes to adopt the following resolution relating to Surface Water Service Assessments and Surface Water Fees imposed annually in unincorporated areas of the County, as shown above.

A public hearing on the Resolution will be held on **Thursday, September 4, 2025, at 6:00 P.M.** or as soon thereafter as may be accommodated by the completion of the rest of the Board agenda, in the Palm Room, 333 Chestnut Street, Clearwater, Florida 33756. All affected property owners have the right to appear at the public hearing and the right to file written objections within 20 days of the publication of this notice. All written objections must include your name, parcel number, September 4, 2025 public hearing, and the reason you object to the assessment or fee. Objections must be mailed to: Surface Water Assessment, Pinellas County Board Records, 315 Court Street, Clearwater, Florida 33756 or emailed to bccagendacomment@mypinellasclerk.gov. Members of the public wishing to address the body are encouraged to attend in person but may also attend virtually utilizing Communications Media Technology (CMT) on the Zoom platform or provide comments in advance.

The County makes its best efforts to ensure that public hearings will be streamed live at <https://youtube.com/pccvt1> and <https://pinellas.gov/pinellas-county-connection-television-pcc-tv> and broadcast on the Pinellas County cable public access channels:

Spectrum Channel 637 Frontier Channel 44 WOW! Channel 18

To address the County Commission in person, members of the public are encouraged to preregister at <https://comment.pinellas.gov>. Preregistration is encouraged but not required if individuals plan to attend the meeting at the Palm Room in person. Those who have not preregistered may register in person when they arrive.

Members of the public wishing to address the body virtually via Zoom or by phone are required to preregister by 5:00 P.M. the day before the meeting by visiting <https://comment.pinellas.gov>. The registration form requires full name, address and telephone number if joining by phone, along with the topic or agenda item to be addressed. Members of the public who cannot access the registration form via the internet may call (727) 464-3000 to request assistance preregistering. Only members of the public who have preregistered by 5:00 P.M. the day before the meeting will be recognized and unmuted to offer comments. If a member of the public does not log in with the same Zoom name or phone number provided in the registration form, they may not be recognized to speak. In person appearances for comment, or advance comments as noted below, are preferred. The County will use its best efforts to facilitate virtual comment, but citizens using technology to comment virtually are cautioned that this mechanism is being offered by the County as a courtesy and the County does not guarantee the proper functioning of technology involved.

Members of the public wishing to provide comments in advance may call the Agenda Comment Line at (727) 464-4400 or complete the online comment form <https://www.mypinellasclerk.gov/Home/Finance#127688-bcc-meetings>. Comments on any agenda item must be submitted by 5:00 P.M. the day before the meeting.

Persons who are deaf or hard of hearing may provide public input on any agenda item through use of the State of Florida's relay service at 7-1-1 or for more information see <https://www.fttri.org/relay/faqs>.

KEN BURKE, CLERK TO
THE BOARD OF COUNTY COMMISSIONERS
By: Derelynn Revie, Deputy Clerk