

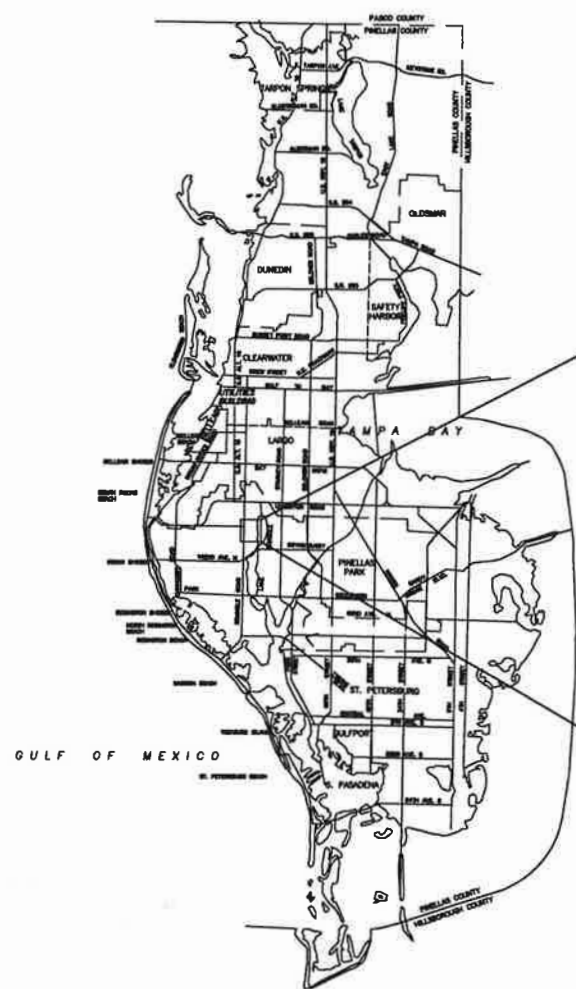
PINELLAS COUNTY PUBLIC WORKS

LAKE SEMINOLE REGIONAL STORMWATER TREATMENT FACILITIES BASIN 2



PID No. 829

100% PLANS



LOCATION MAP



SECTION 16, TOWNSHIP 30 SOUTH, RANGE 16 EAST

KEY MAP
NOT TO SCALE

Page	Sheet	Description
1	-	COVER
2	G-1	PINELLAS COUNTY GENERAL NOTES I
3	G-2	PINELLAS COUNTY GENERAL NOTES II
4	G-3	STANDARDS, ABBREVIATIONS AND GENERAL CONSTRUCTION NOTES
5	G-4	SURVEY INFORMATION
6	G-5	STORMWATER POLLUTION PREVENTION PLAN
7	G-6	EROSION AND SEDIMENTATION CONTROL NOTES
8	G-7	EROSION AND SEDIMENTATION CONTROL DETAILS
9	G-8	EROSION AND SEDIMENTATION CONTROL PLAN
10	G-9	EXISTING CONDITIONS
11	C-1	SITE LAYOUT PLAN KEY
12	C-2	TREATMENT SYSTEM SITE LAYOUT PLAN I
13	C-3	TREATMENT SYSTEM SITE LAYOUT PLAN II
14	C-4	TREATMENT SYSTEM SITE LAYOUT PLAN III
15	CS-1	CANAL CROSS SECTIONS
16	M-1	BUILDING PIPING PLAN
17	M-2	BUILDING PIPING DETAILS AND NOTES
18	M-3	WATER PUMP / DRY WELL PLAN
19	D-1	EROSION/TURBIDITY CONTROL DETAILS
20	D-2	CHEMICAL TREATMENT SYSTEM DETAILS
21	D-3	MISCELLANEOUS DETAILS
22	S-1	BUILDING PLANS, SCHEDULES & DETAILS
23	S-2	BUILDING ELEVATIONS, DETAILS & NOTES
24	S-3	BUILDING SECTIONS
25	S-4	REMOTE PANEL COVER STRUCTURE
26	E-1	ELECTRICAL SITE PLAN
27	E-2	ALUM BUILDING ELECTRICAL PLAN
28	E-3	ELECTRICAL RISER DIAGRAM AND PANEL SCHEDULE

PINELLAS COUNTY
DEPARTMENT OF PUBLIC WORKS
DIVISION OF ENGINEERING AND TECHNICAL SUPPORT
14 SOUTH FORT HARRISON AVENUE
CLEARWATER, FLORIDA 33756
PHONE: (727)464-3588

PROJECT MANAGER: PAUL N. BERLAGE

SUBMITTED BY:

KELLY H. LEVY _____ DATE
NATURAL RESOURCE MANAGER

APPROVED BY:

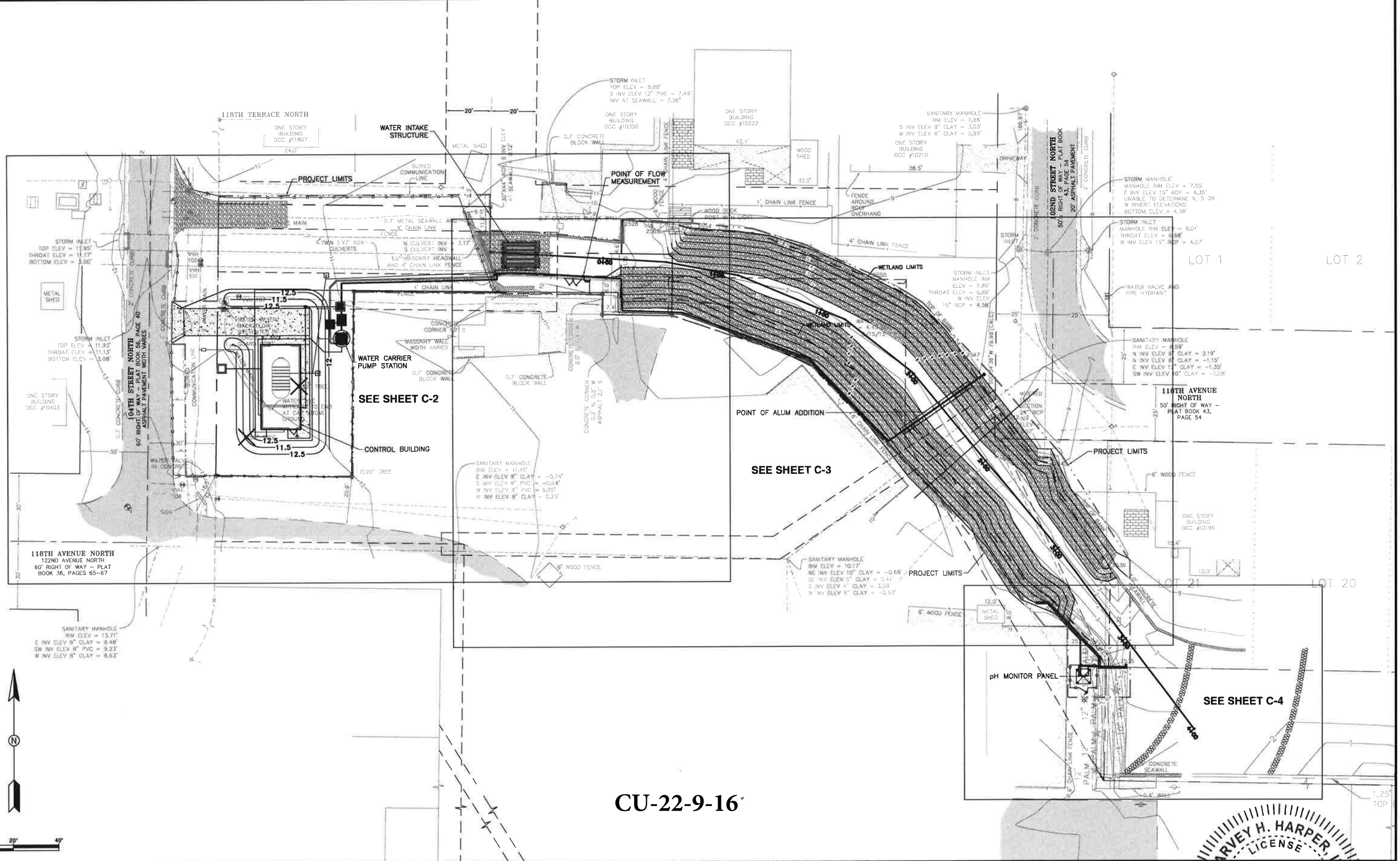
RICHARD L. V. COATES III _____ DATE
PUBLIC WORKS DIRECTOR

PREPARED BY: ENVIRONMENTAL RESEARCH & DESIGN, INC.
4110 BRENWOOD BLVD., SUITE 102
ORLANDO, FL 32835
PHONE: (407) 855-9465
ENGINEERING BUSINESS No. 024

Water Quality Engineer
No 32595
STATE OF
FLORIDA
PROFESSIONAL ENGINEER
Harvey H. Harper
ENGINEER OF RECORD
DATE 10/2/16

CU-22-9-16

Tue, 14 Jun 2016 - 3:35pm D:\My Documents\DWG\Lake Seminole\1.Basht 2\03-33BSEC02.dwg Les



CU-22-9-16'

DESIGNED BY:	REV.	DATE	DESCRIPTION	APP'D. BY
H. H. HARPER				
DRAWN BY:				
L. E. HEIGHT				
CHECKED BY:				
H. H. HARPER				
APPROVED BY:				
H. H. HARPER				
DATE: May., 2016				
SCALE: AS SHOWN				

ERD
Water Quality Engineering
ENVIRONMENTAL RESEARCH & DESIGN, INC.
ENGINEERING • SCIENCE • CHEMISTRY • RESEARCH
3419 TRENTWOOD BLVD., SUITE 102, ORLANDO, FL 32812
TELEPHONE 407-855-9465 • FAX 407-828-0419
ENGINEERING BUSINESS No. 624

**LAKE SEMINOLE REGIONAL STORMWATER
TREATMENT FACILITIES BASIN 2**

PINELLAS COUNTY, FLORIDA

**SITE LAYOUT
PLAN KEY**

PROJECT No. 829

PROFESSIONAL ENGINEER

STATE OF FLORIDA

Harvey H. Harper, P.E.
No. 32595

SHEET 11 OF 28

