



# Beckett Bridge Replacement

## Tarpon Springs, FL

### C. Schedule

Bridge Investment Program (BIP)  
Grant Application

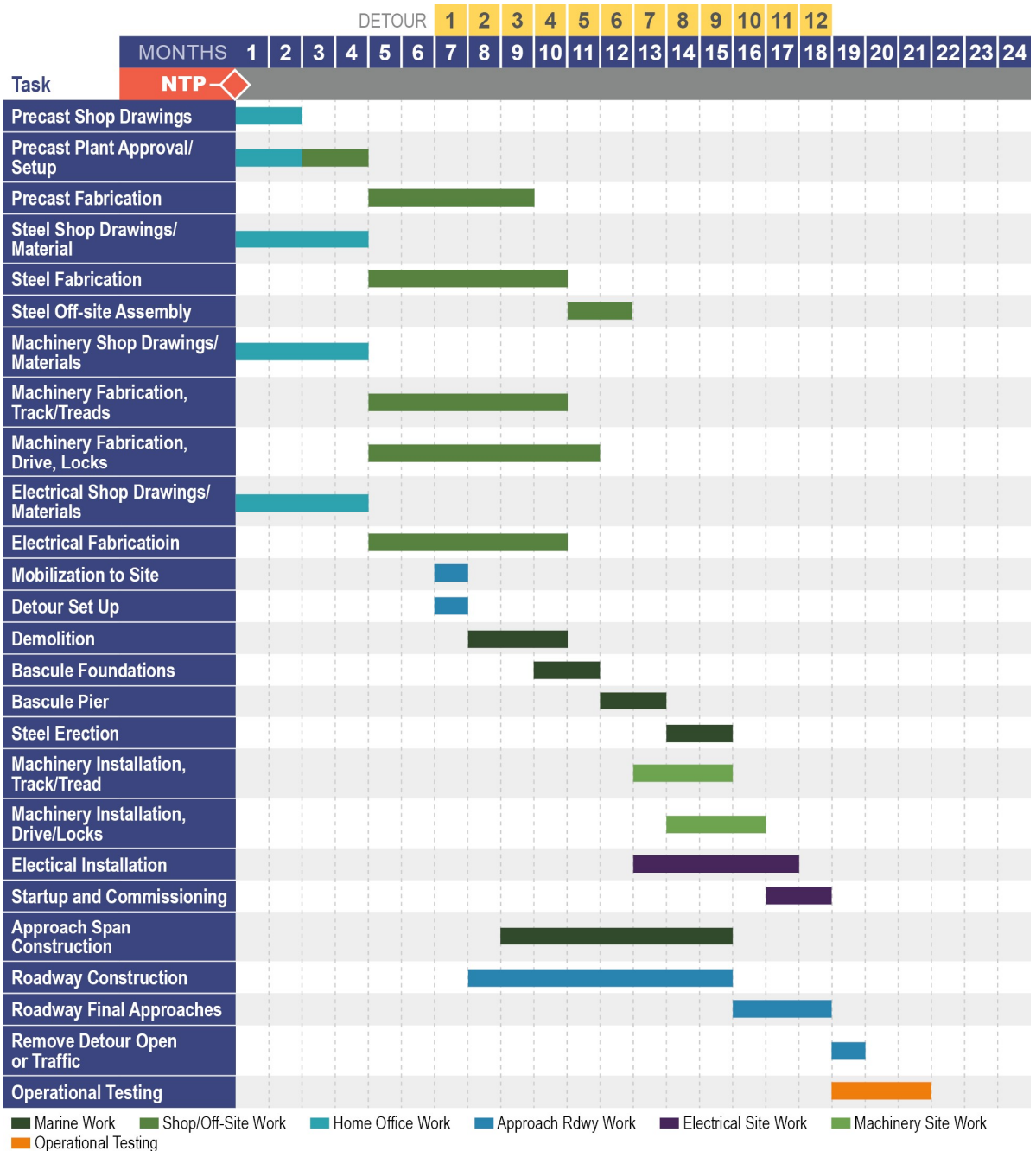
SEPTEMBER 2022

### Contact

Pinellas County Board of County Commissioners

Mona R. Gabriel, P.E., CCM  
[mgabriel@pinellascounty.org](mailto:mgabriel@pinellascounty.org)  
(727)464-3763

# PROJECT SCHEDULE





**01037A Beckett Bridge**  
**Estimate of Construction Schedule**

Prepared By: GCP 21-Feb  
 Checked By: JMP 22-Aug



Detour	1	2	3	4	5	6	7	8	9	10	11	12
--------	---	---	---	---	---	---	---	---	---	----	----	----

Months from NTP

Task	Duration (Months)	1	2	3	4	5	6	7	8	9	10	11	12	13	14	15	16	17	18	19	20	21	22	23	24
NTP	0																								
Precast Shop Drawings	2	XXXX	XXXX																						
Precast Plant Approval/Setup	4	XXXX	XXXX	XXXX	XXXX																				
Precast Fabrication	5					XXXX	XXXX	XXXX	XXXX	XXXX															
Steel Shop Drawings/Material	4	XXXX	XXXX	XXXX	XXXX																				
Steel Fabrication	6					XXXX	XXXX	XXXX	XXXX	XXXX	XXXX														
Steel Off-site Assembly	2											XXXX	XXXX												
Machinery Shop Drawings/Materials	4	XXXX	XXXX	XXXX	XXXX																				
Machinery Fabrication, Track/Treads	6					XXXX	XXXX	XXXX	XXXX	XXXX	XXXX														
Machinery Fabrication, Drive, Locks	7					XXXX	XXXX	XXXX	XXXX	XXXX	XXXX	XXXX													
Electrical Shop Drawings/Materials	4	XXXX	XXXX	XXXX	XXXX																				
Electrical Fabrication	6					XXXX	XXXX	XXXX	XXXX	XXXX	XXXX														
Mobilization to Site	1							XXXX																	
Detour Set Up	0.5							XX																	
Demolition	3								XXXX	XXXX	XXXX														
Bascule Foundations	2										XXXX	XXXX													
Bascule Pier	2												XXXX	XXXX											
Steel Erection	2														XXXX	XXXX									
Machinery Installation, Track/Tread	2													XX	XXXX	XX									
Machinery Installation, Drive/Locks	2														XX	XXXX	XX								
Electrical Installation	2														XX			XXXX	XX						
Startup and Commissioning	2																	XXXX	XXXX						
Approach Span Construction	7									XXXX	XXXX	XXXX	XXXX	XXXX	XXXX	XXXX									
Roadway Construction	8								XXXX	XXXX	XXXX	XXXX	XXXX	XXXX	XXXX	XXXX									
Roadway Final Approaches	3																XXXX	XXXX	XXXX						
Remove Detour Open for Traffic	0																				X				
Operational Testing	3																			XXXX	XXXX	XXXX			

**LEGEND:**

	Marine Work
	Shop/Off-Site Work
	Home Office Work
	Approach Rdwy Work
	Electrical Site Work
	Machinery Site Work
	Operational Testing