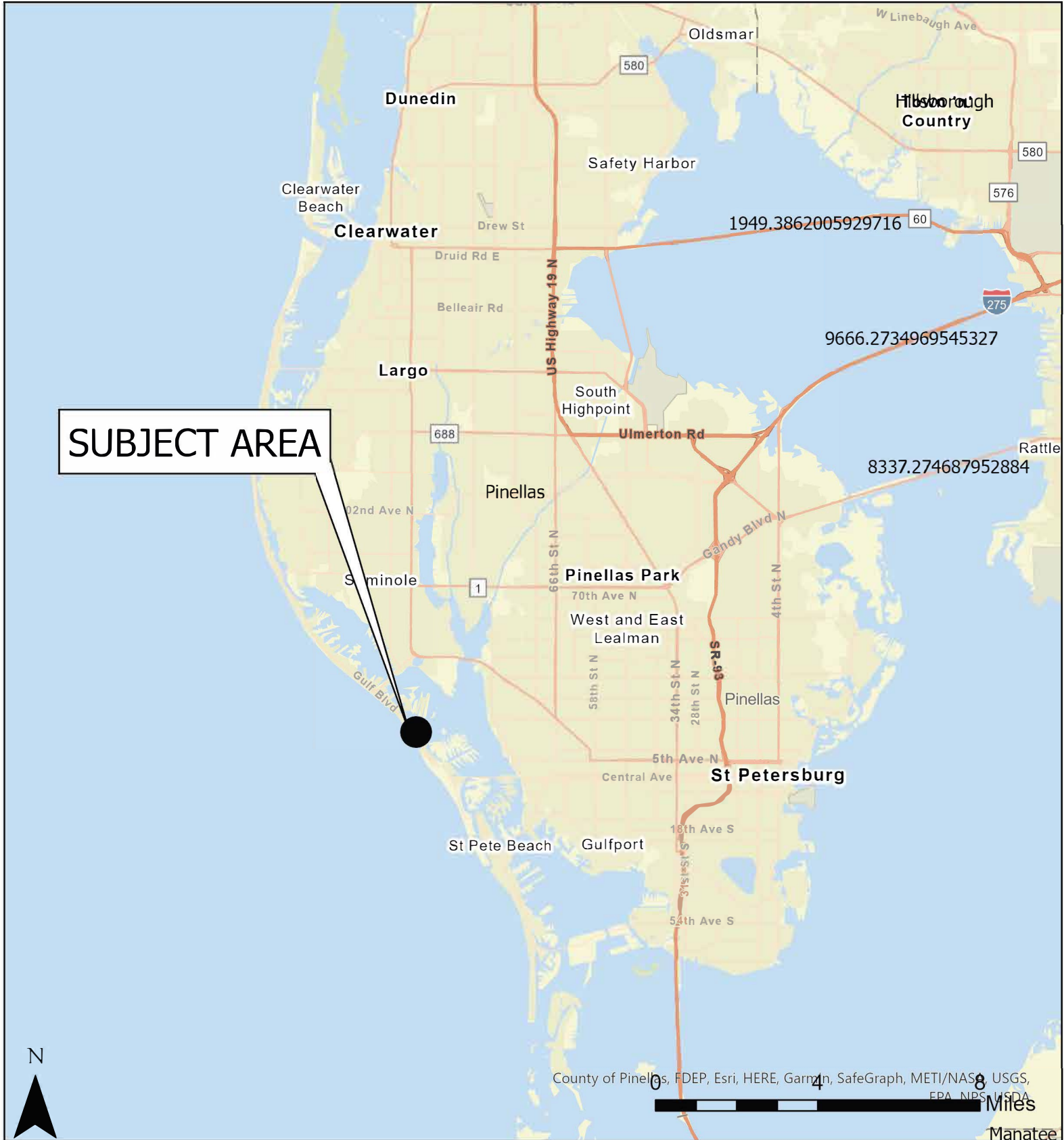


# Case CW23-03

## Map 1: Location Map

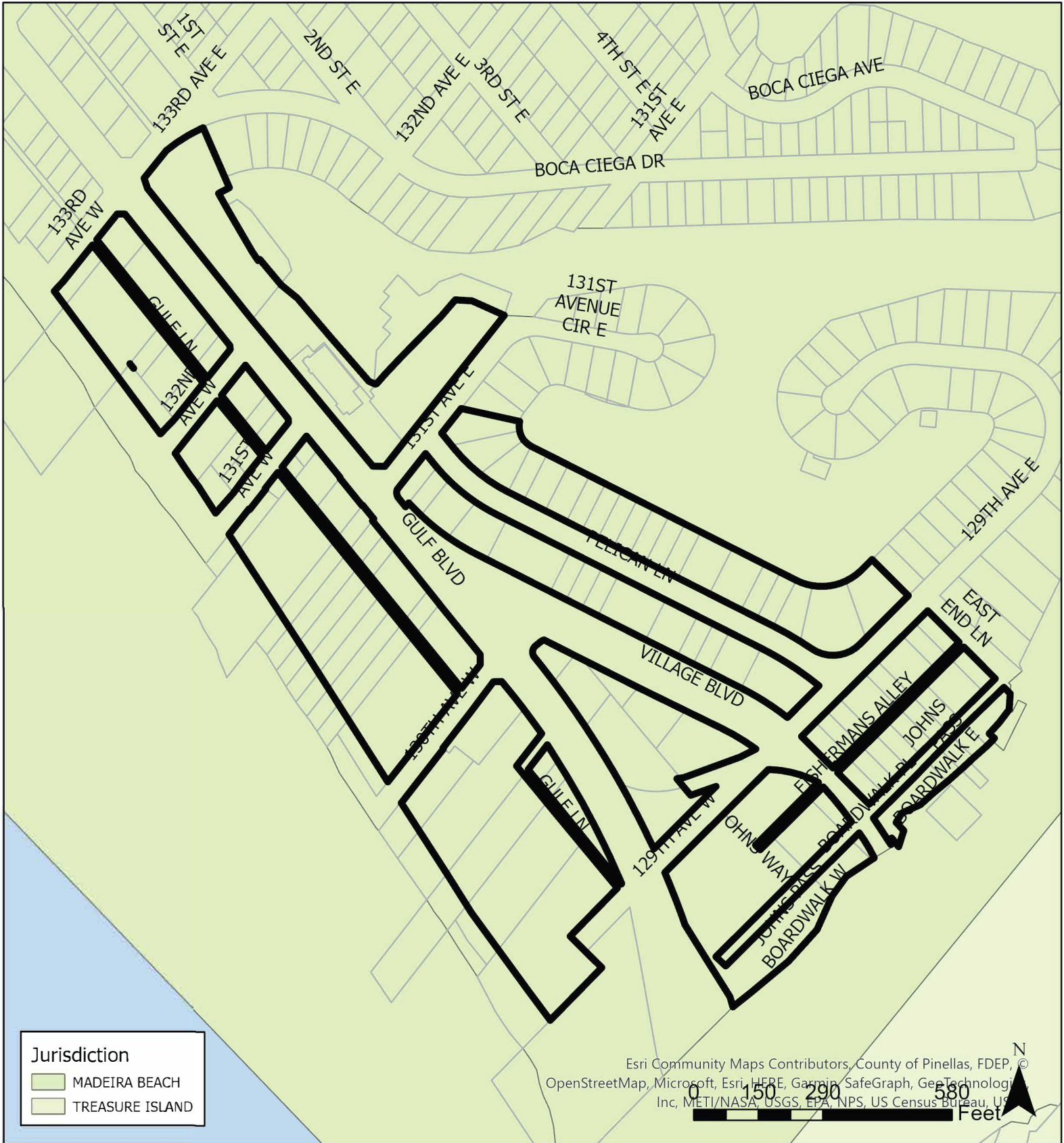


**JURISDICTION: Madeira Beach**  
**AREA: 27.04 acres m.o.l.**

**FROM: Residential Medium, Resort,  
Retail & Services, Recreation/Open Space**  
**TO: Activity Center**

# Case CW23-03

## Map 2: Jurisdictional Map



**JURISDICTION: Madeira Beach**

**AREA: 27.04 acres m.o.l.**

**FROM: Residential Medium, Resort,  
Retail & Services, Recreation/Open Space**

**TO: Activity Center**



# Case CW23-03

## Map 3: Aerial Map



**JURISDICTION: Madeira Beach**

**AREA: 27.04 acres m.o.l.**

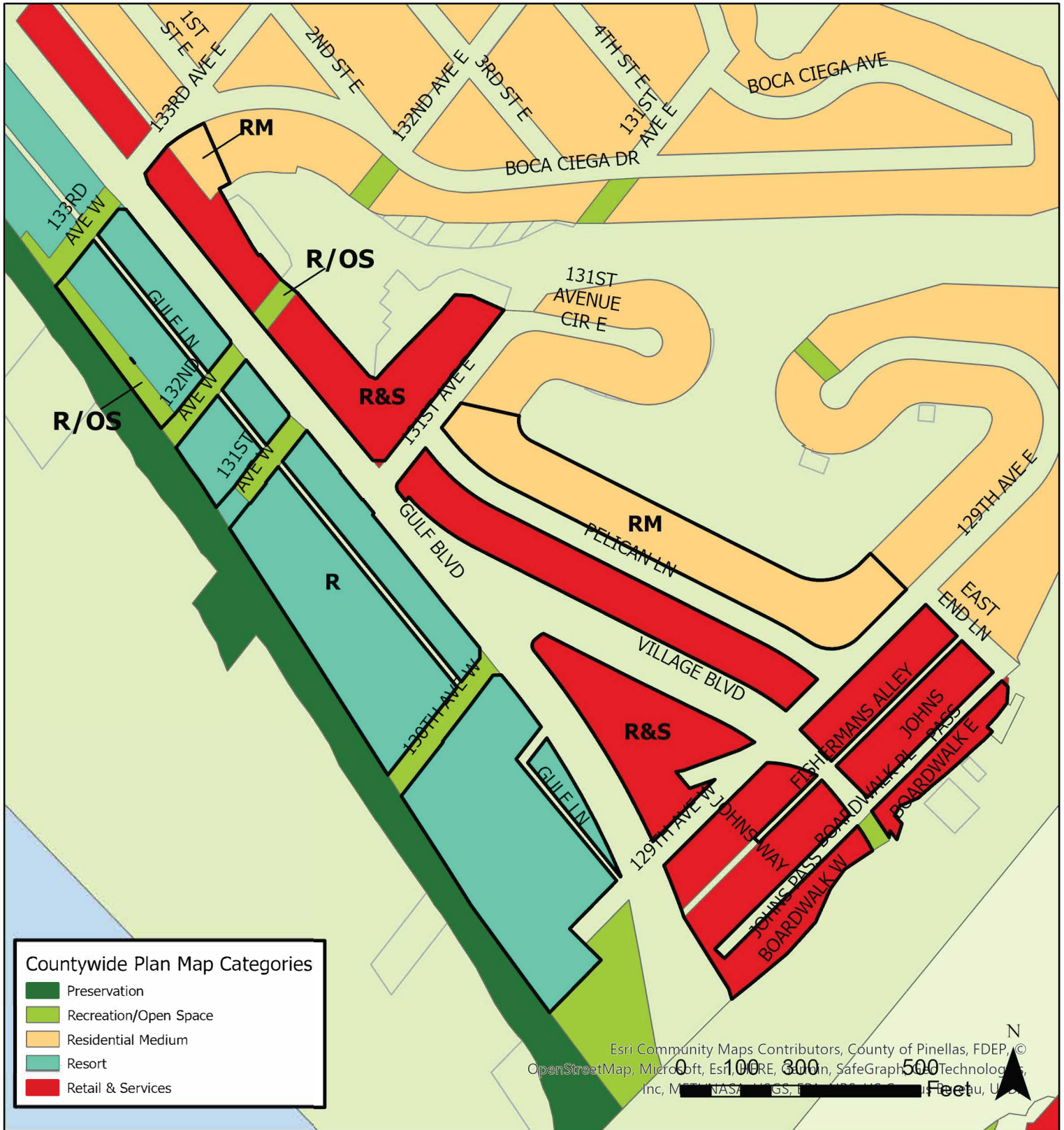
**FROM: Residential Medium, Resort,  
Retail & Services, Recreation/Open Space**

**TO: Activity Center**



# Case CW23-03

## Map 4: Current Countywide Plan Map

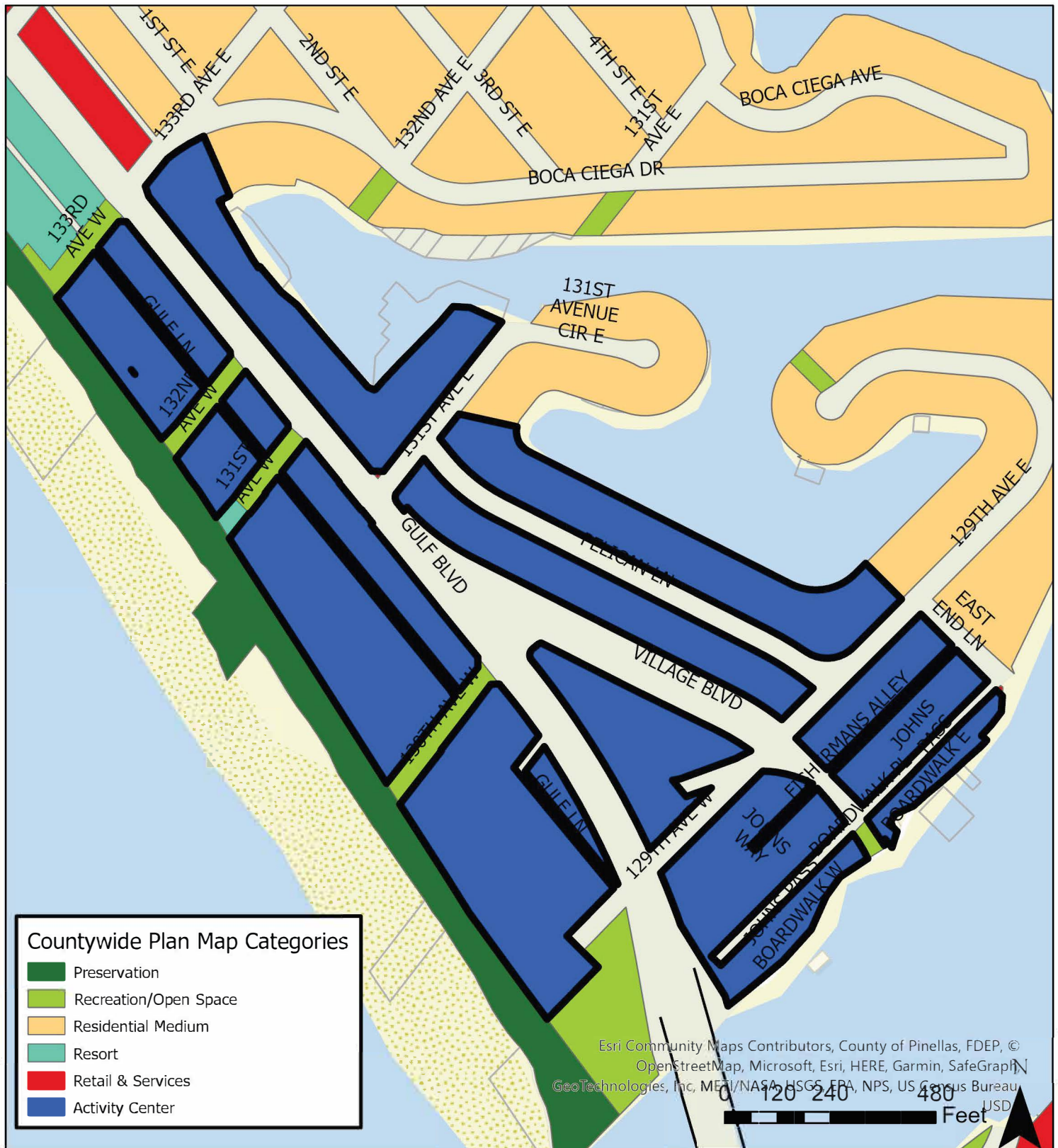


**JURISDICTION: Madeira Beach**

**AREA: 27.04 acres m.o.l.**

**FROM: Residential Medium, Resort, Retail & Services, Recreation/Open Space**

**TO: Activity Center**



**JURISDICTION: Madeira Beach**

**AREA: 27.04 acres m.o.l.**

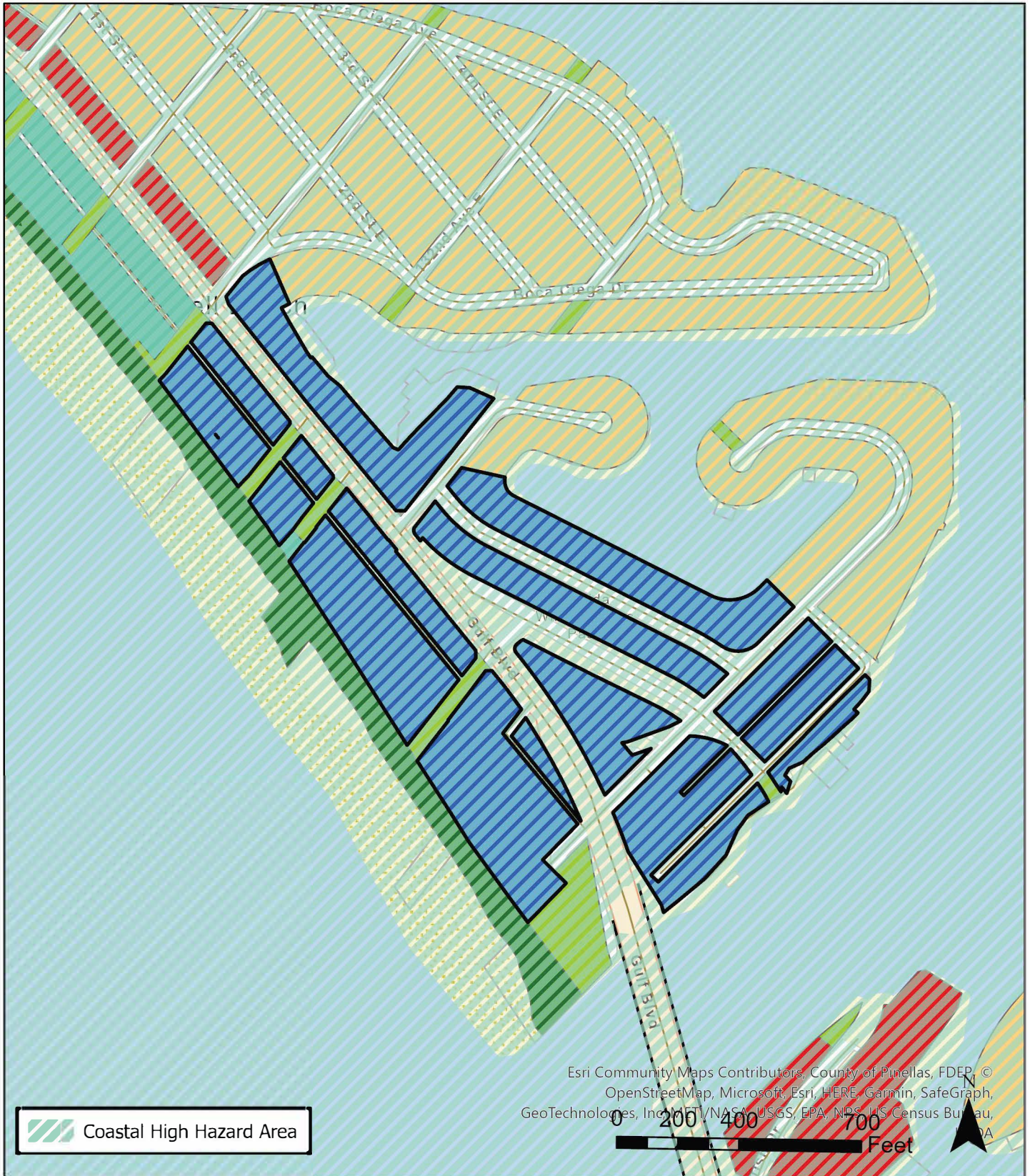
**FROM: Residential Medium, Resort, Retail & Services, Recreation/Open Space**

**TO: Activity Center**



# Case CW23-03

## Map 6: Coastal High Hazard Area



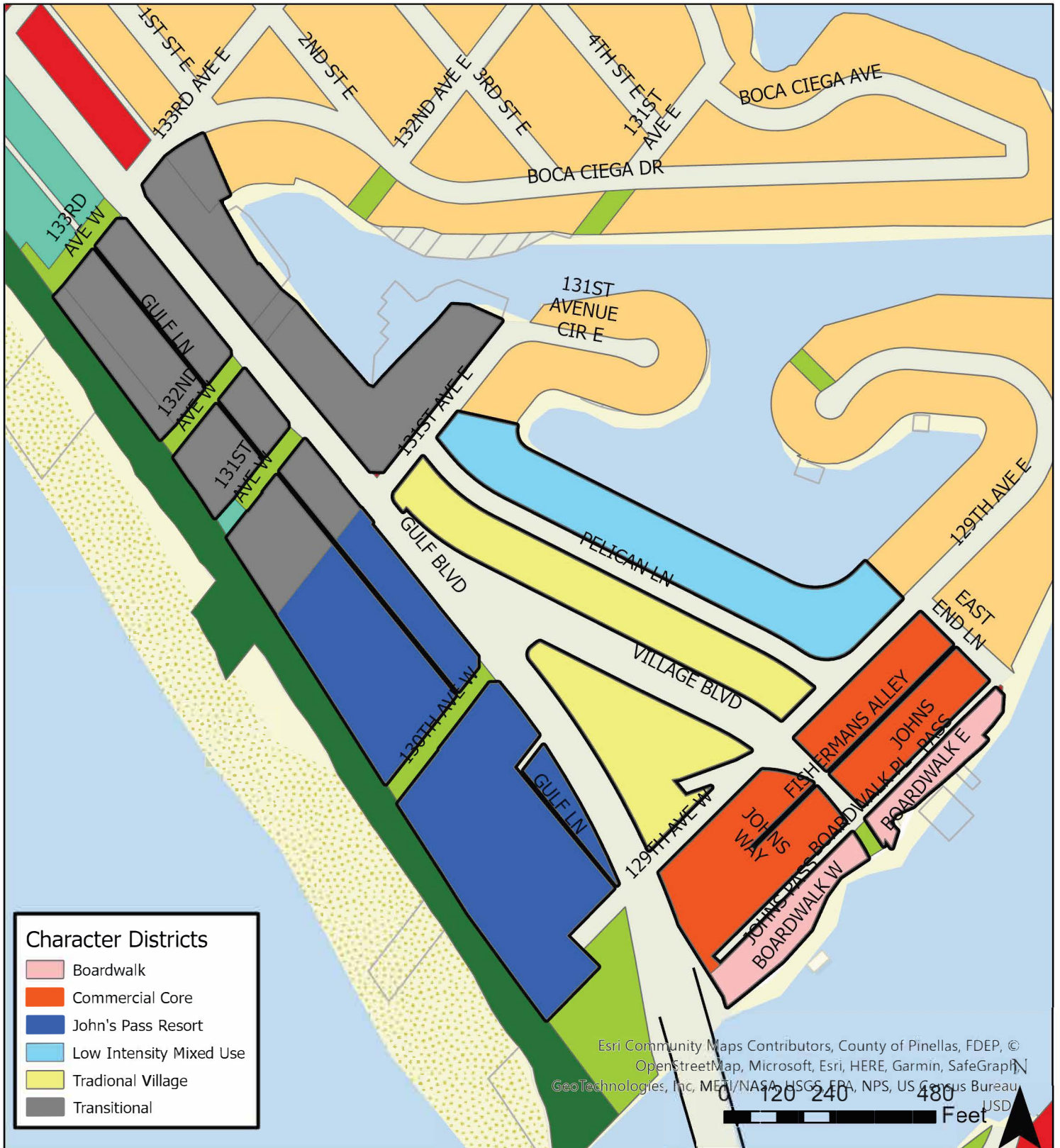
**JURISDICTION: Madeira Beach**  
**AREA: 27.04 acres m.o.l.**

**FROM: Residential Medium, Resort,  
Retail & Services, Recreation/Open Space**  
**TO: Activity Center**



# Case CW23-03

## Map 7: Proposed Character Districts



**JURISDICTION: Madeira Beach**

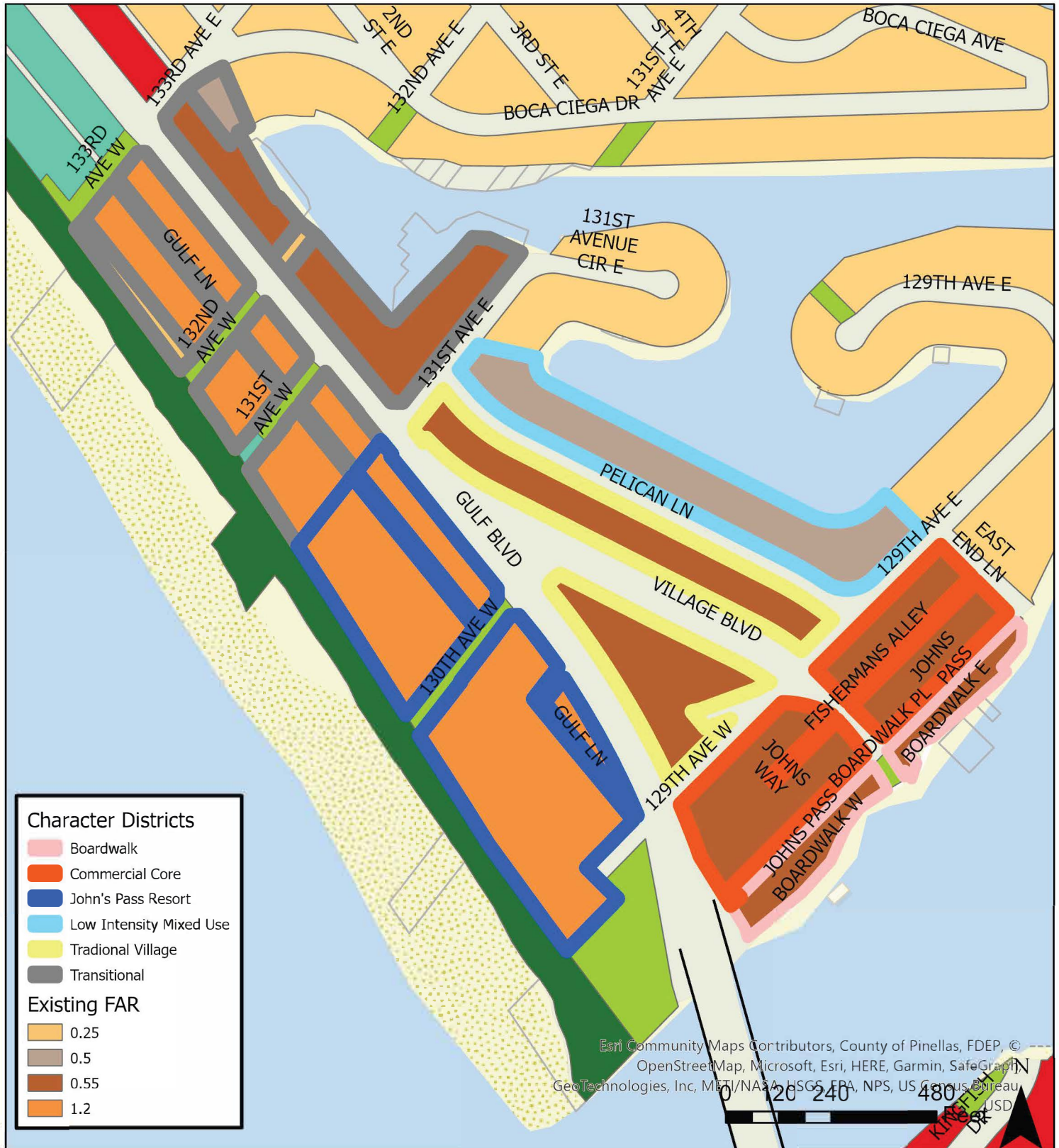
**AREA: 27.04 acres m.o.l.**

**FROM: Residential Medium, Resort, Retail & Services, Recreation/Open Space**

**TO: Activity Center**



## Map 8: Existing FAR Per Character District



**JURISDICTION: Madeira Beach**

**AREA: 27.04 acres m.o.l.**

**FROM: Residential Medium, Resort, Retail & Services, Recreation/Open Space**

**TO: Activity Center**



# Case CW23-03

## Map 9: Proposed Maximum FAR Per Character District (Alt. Compromise)



**JURISDICTION: Madeira Beach**

**AREA: 27.04 acres m.o.l.**

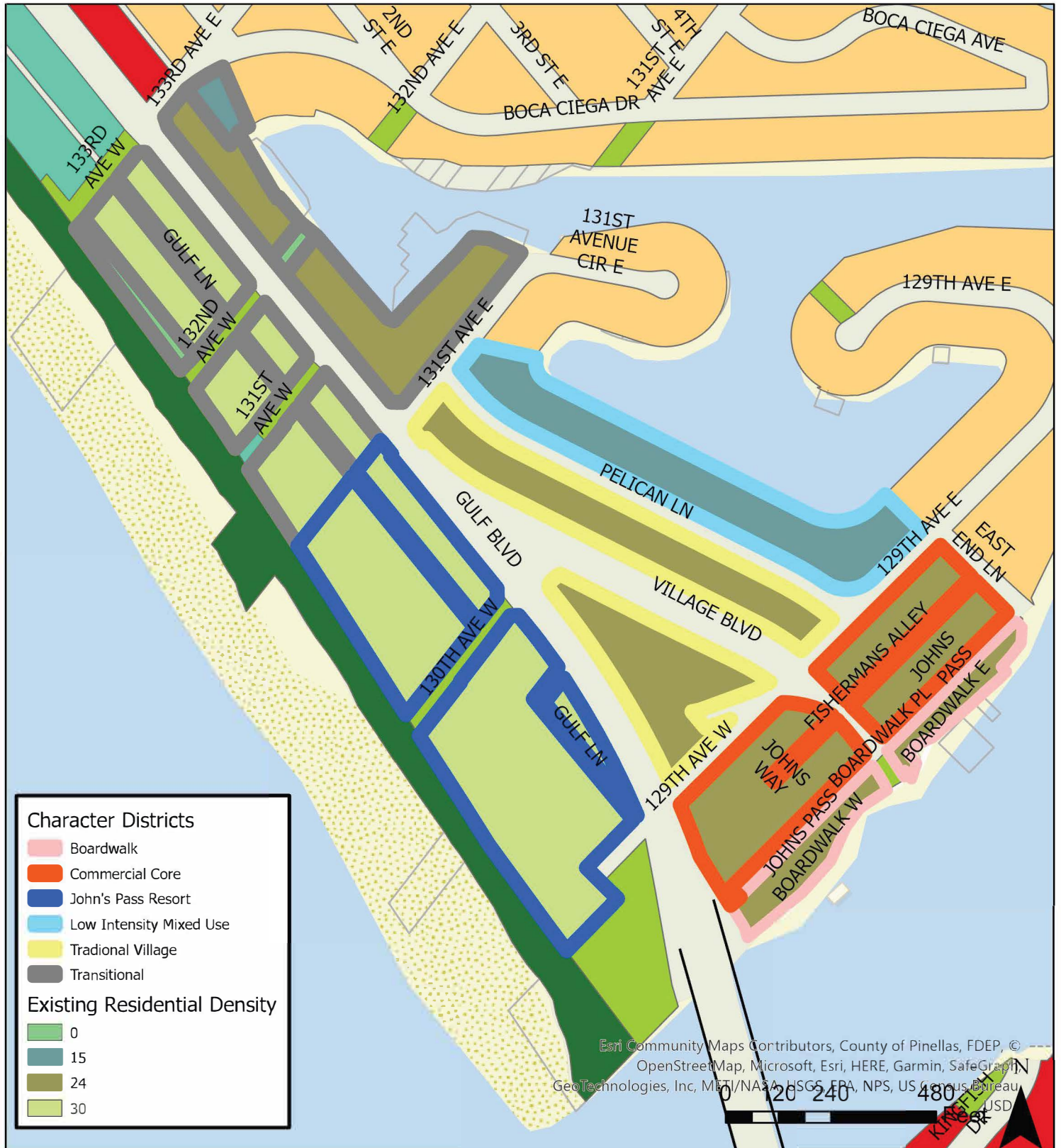
**FROM: Residential Medium, Resort, Retail & Services, Recreation/Open Space**

**TO: Activity Center**



# Case CW23-03

## Map 10: Existing Residential Density Per Character District



**JURISDICTION: Madeira Beach**

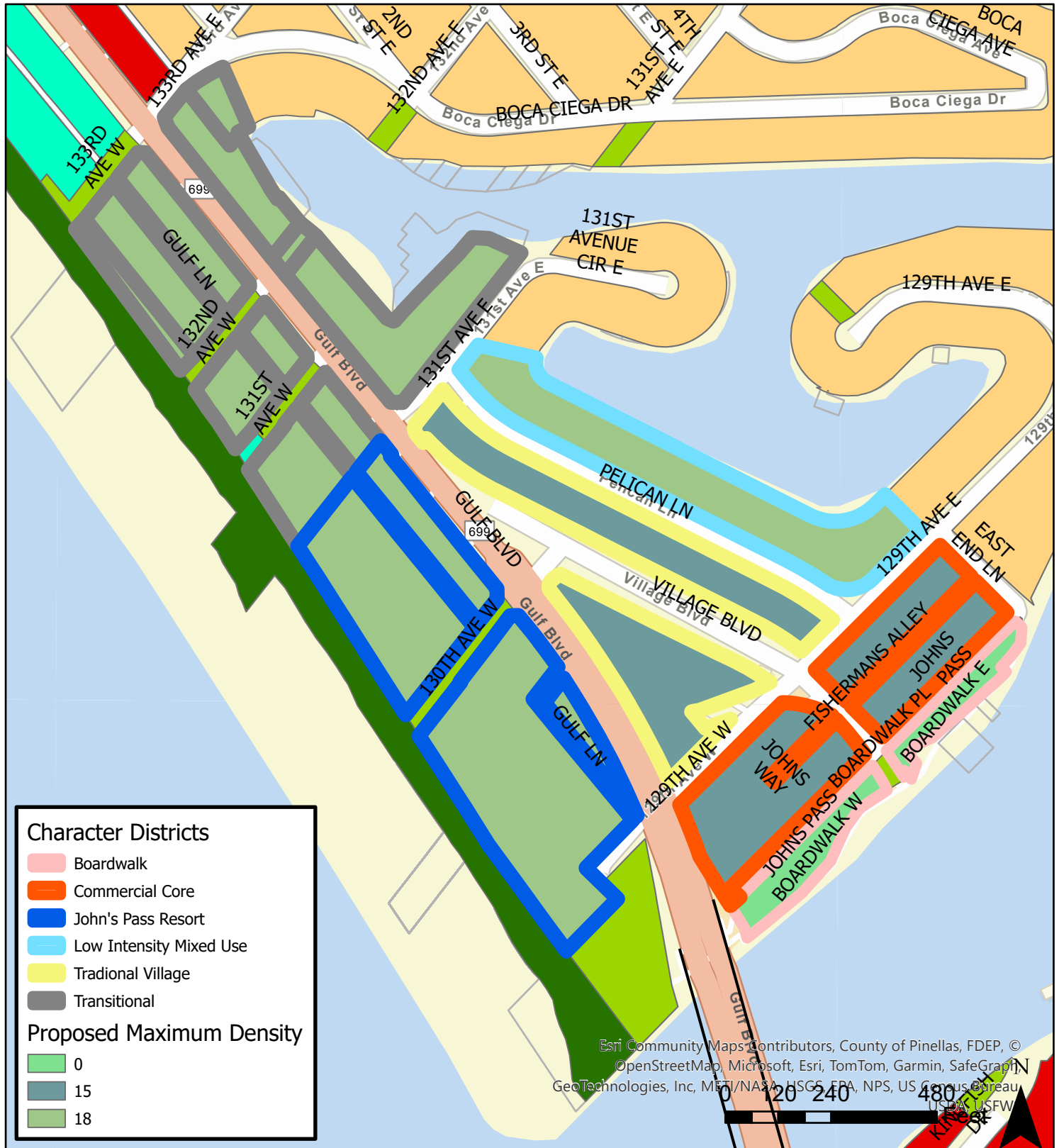
**AREA: 27.04 acres m.o.l.**

**FROM: Residential Medium, Resort, Retail & Services, Recreation/Open Space**

**TO: Activity Center**



# Map 11: Proposed Maximum Residential Density Per Character District (Alt. Compromise)



**JURISDICTION: Madeira Beach**

**FROM: Residential Medium, Resort, Retail & Services, Recreation/Open Space**

**AREA: 27.04 acres m.o.l.**

**TO: Activity Center**