

CU-22-9-16

**LOCATION MAP**

**CU-22-9-16**

**Conditional Use** A Conditional Use for the construction of a stormwater treatment facility

15/30/15/64404/000/0325

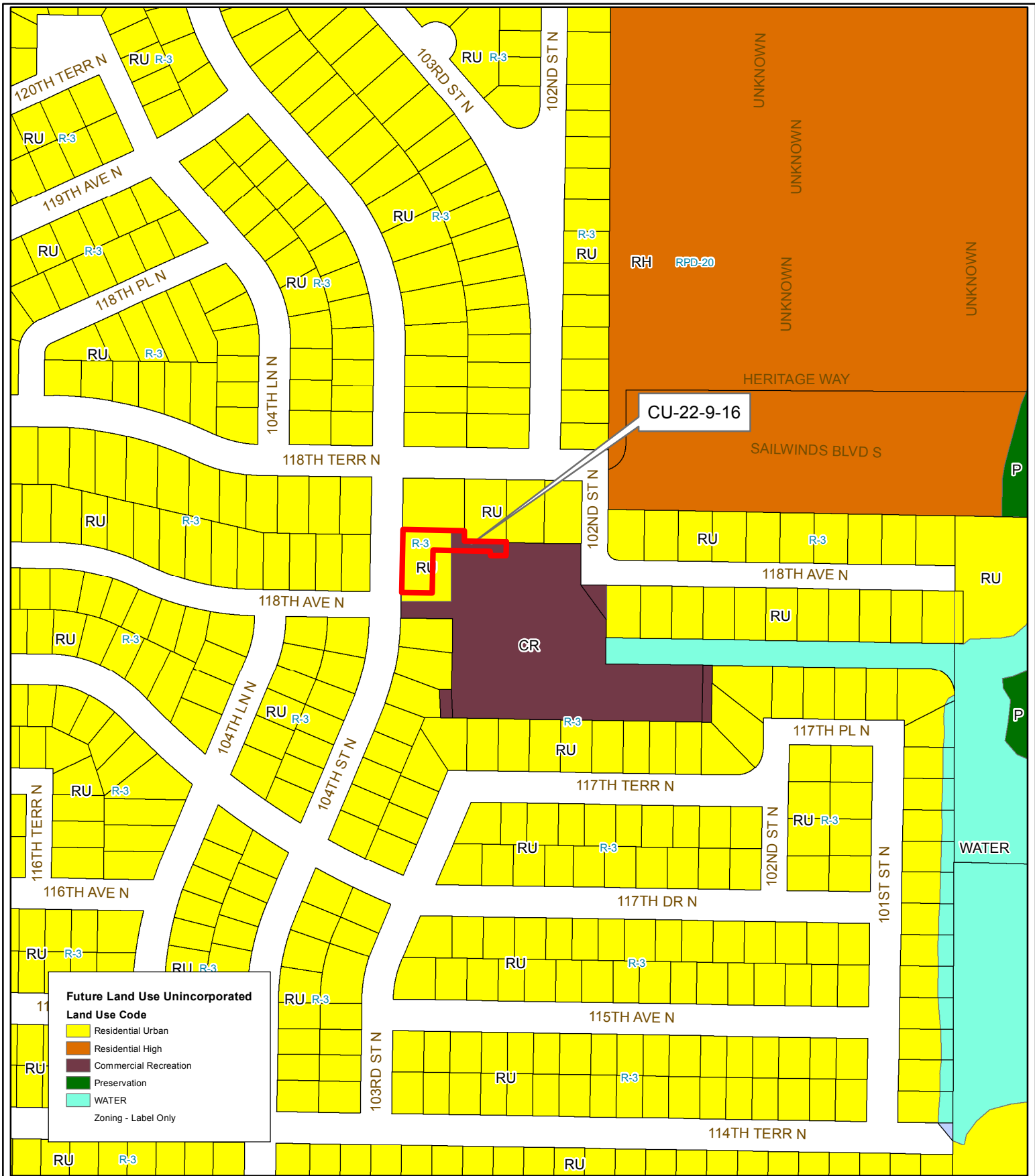
Prepared by: Pinellas County Planning Department



Date: 7/27/2016



1 inch = 4.5 miles

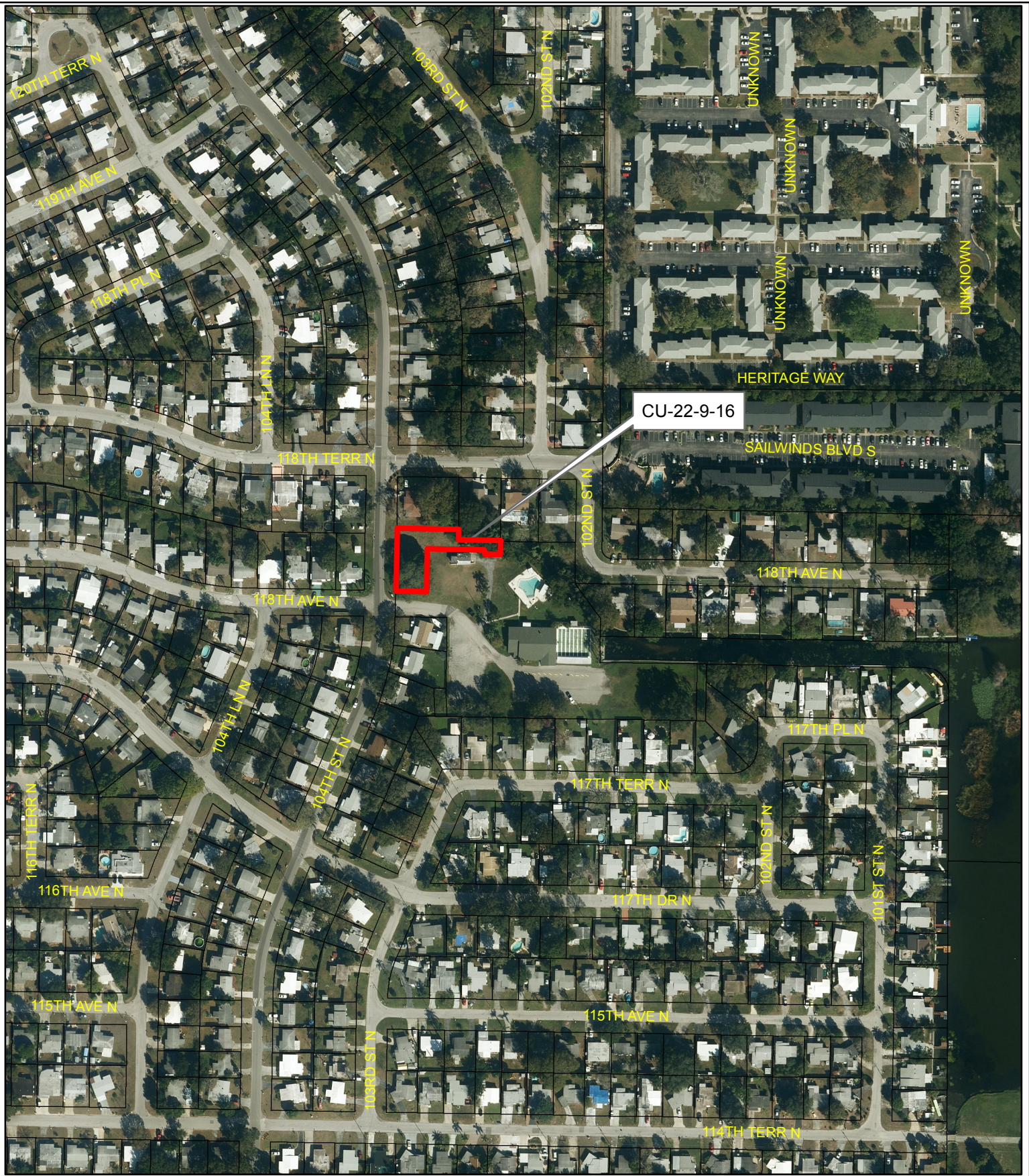


CU-22-9-16

Future Land Use Unincorporated	
Land Use Code	
	Residential Urban
	Residential High
	Commercial Recreation
	Preservation
	WATER
Zoning - Label Only	

<b>LAND USE &amp; ZONING</b>	<b>Conditional Use</b>	A Conditional Use for the construction of a stormwater treatment facility
<b>CU-22-9-16</b>		





CU-22-9-16

AERIAL MAP

**CU-22-9-16**

**Conditional Use**

A Conditional Use for the construction of a stormwater treatment facility

15/30/15/64404/000/0325

Prepared by: Pinellas County Planning Department

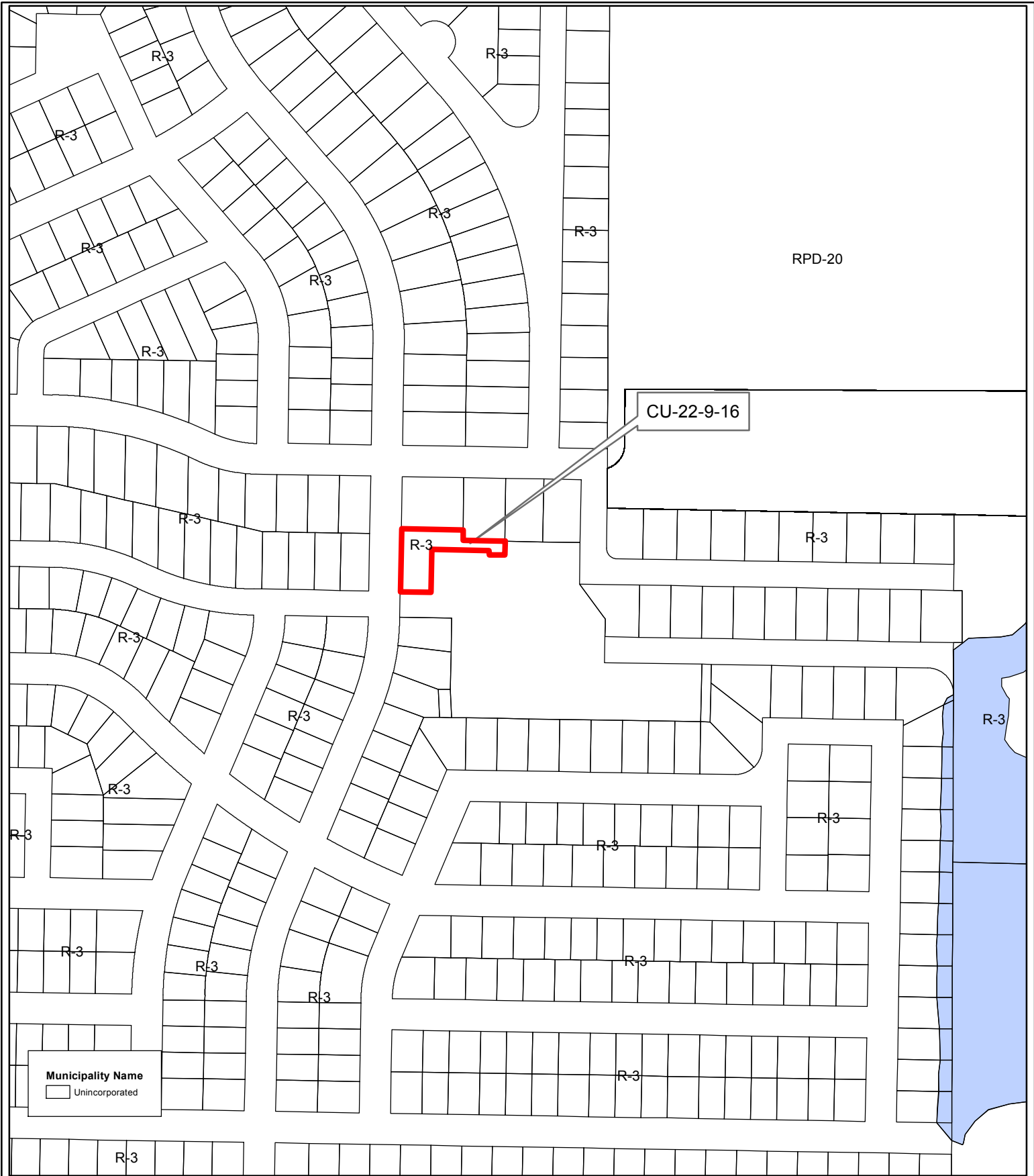


Date: 7/27/2016



1 inch = 0.05 miles





**MUNICIPALITY MAP**  
**CU-22-9-16**

**Conditional Use** A Conditional Use for the construction of a stormwater treatment facility

15/30/15/64404/000/0325

Prepared by: Pinellas County Planning Department



Date: 7/27/2016



1 inch = 0.05 miles