

Map 1 - Location

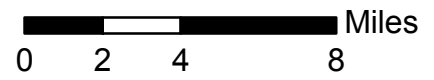
CASE #: CW17-8

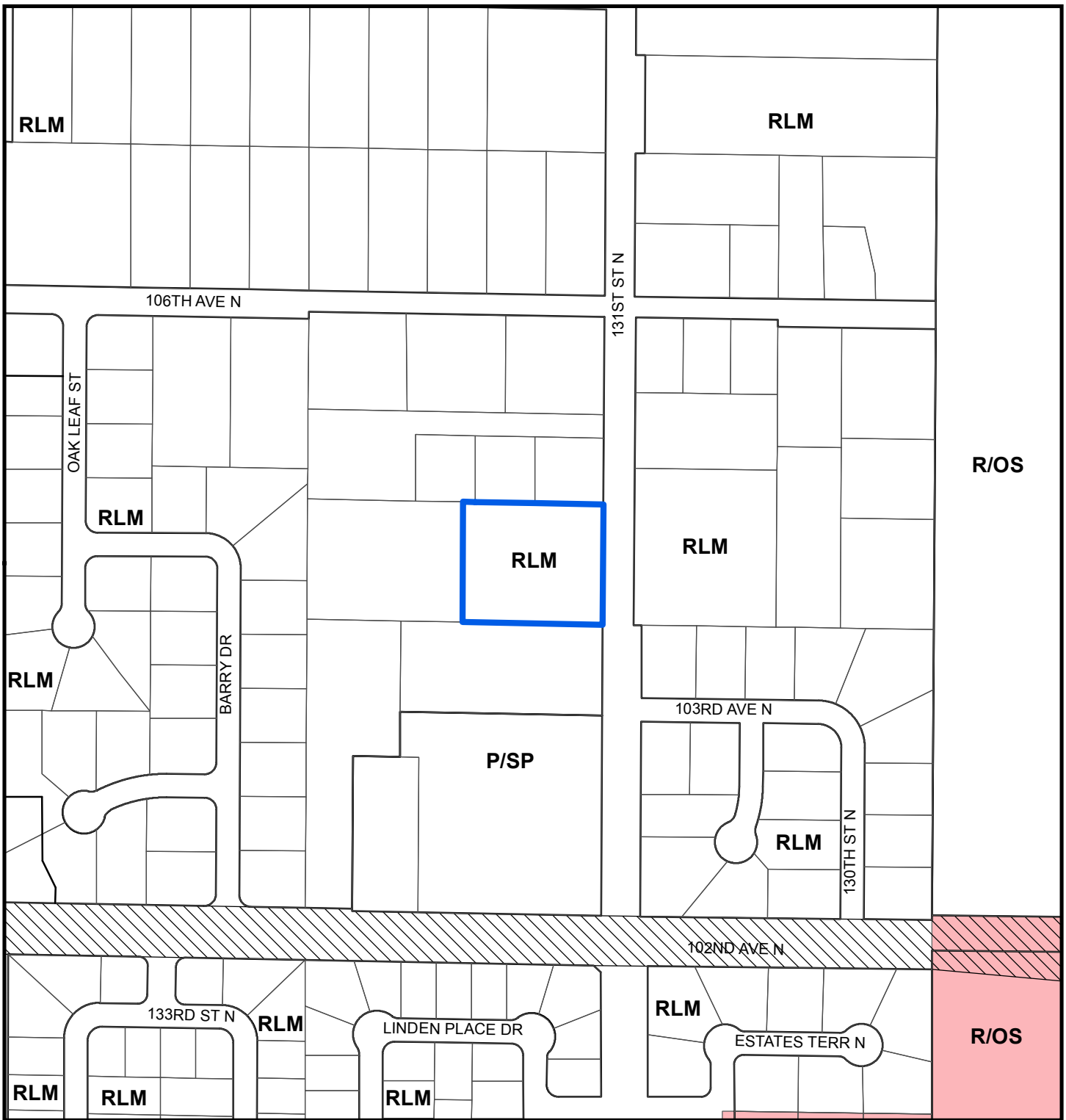
FROM: Residential Low Medium

AREA: 1.8 Acres

JURISDICTION: Pinellas County

TO: Public/Semi-Public





Map 2 - Current Countywide Plan Map & Jurisdictional Map

CASE #: CW17-8


FROM: Residential Low Medium


AREA: 1.8 Acres

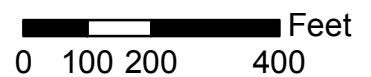
JURISDICTION: Pinellas County

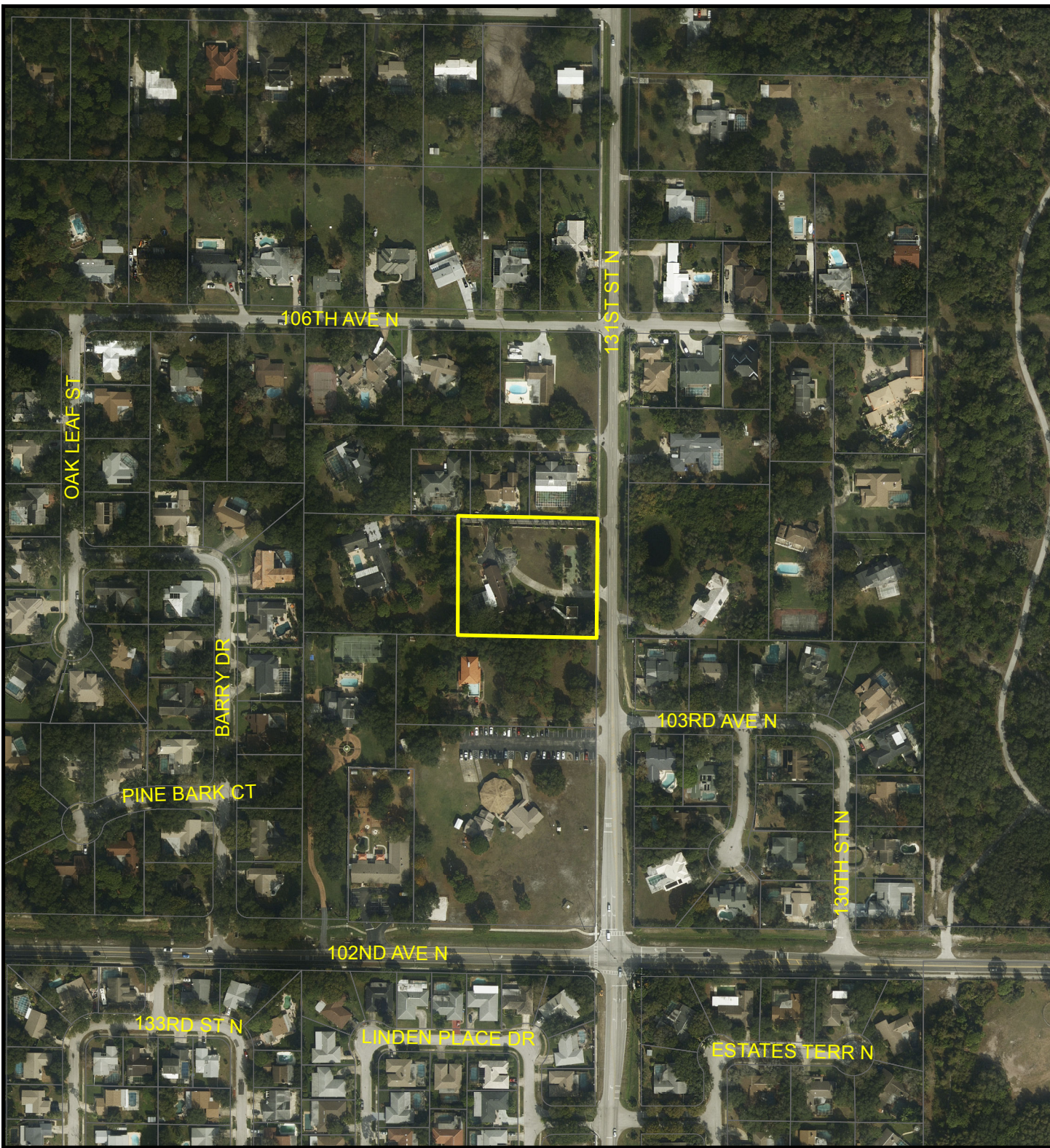
TO: Public/Semi-Public

LEGEND:

 Seminole

 Unincorporated





Map 3 - Aerial

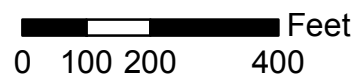
CASE #: CW17-8

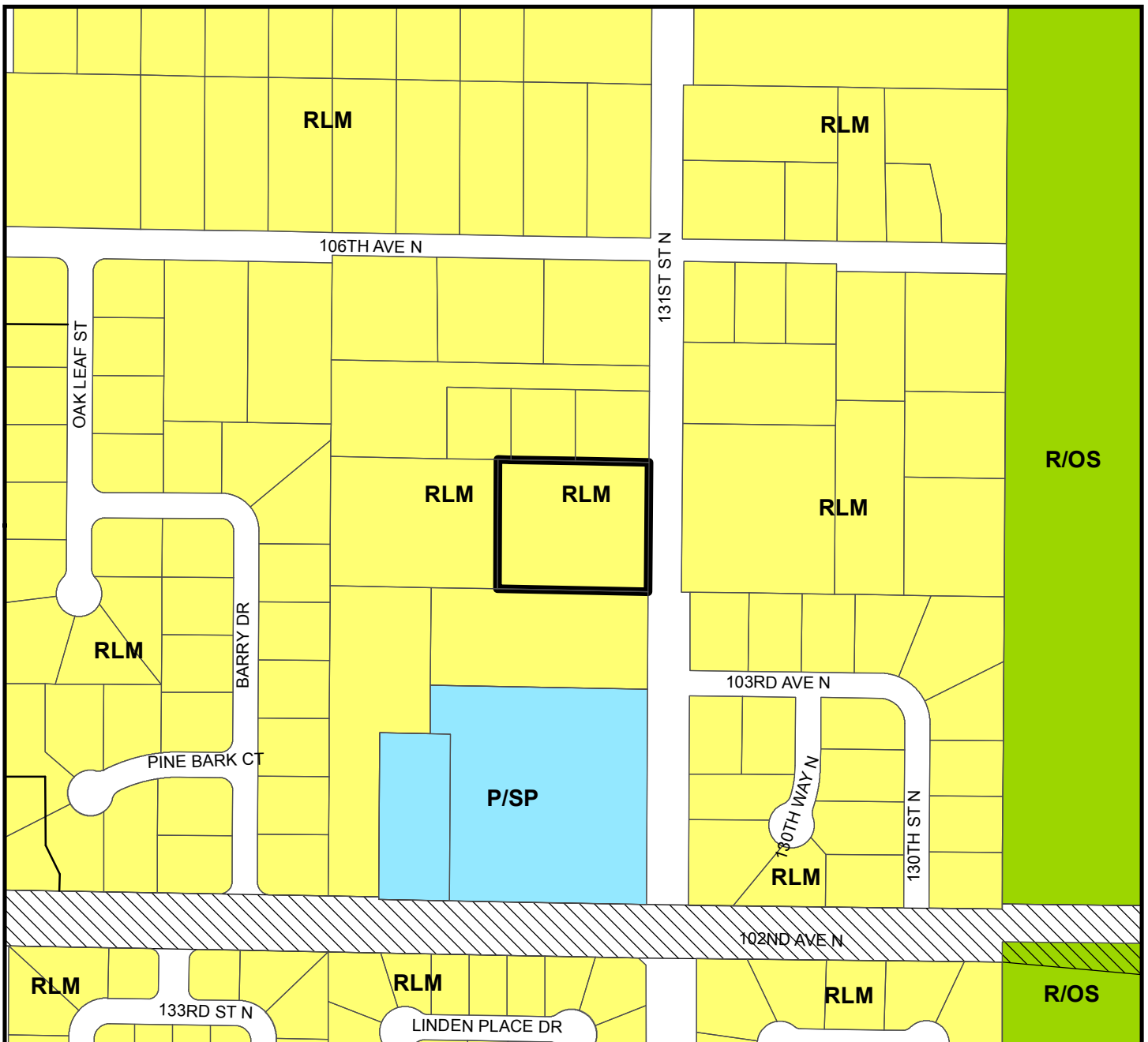
FROM: Residential Low Medium

AREA: 1.8 Acres

JURISDICTION: Pinellas County

TO: Public/Semi-Public





Countywide Plan Map Categories

- Residential Low Medium
- Public/Semi-Public
- Recreation/Open Space
- Scenic/Noncommercial Corridor

Map 4 - Current Countywide Plan Map

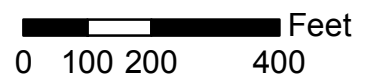
CASE #: CW17-8

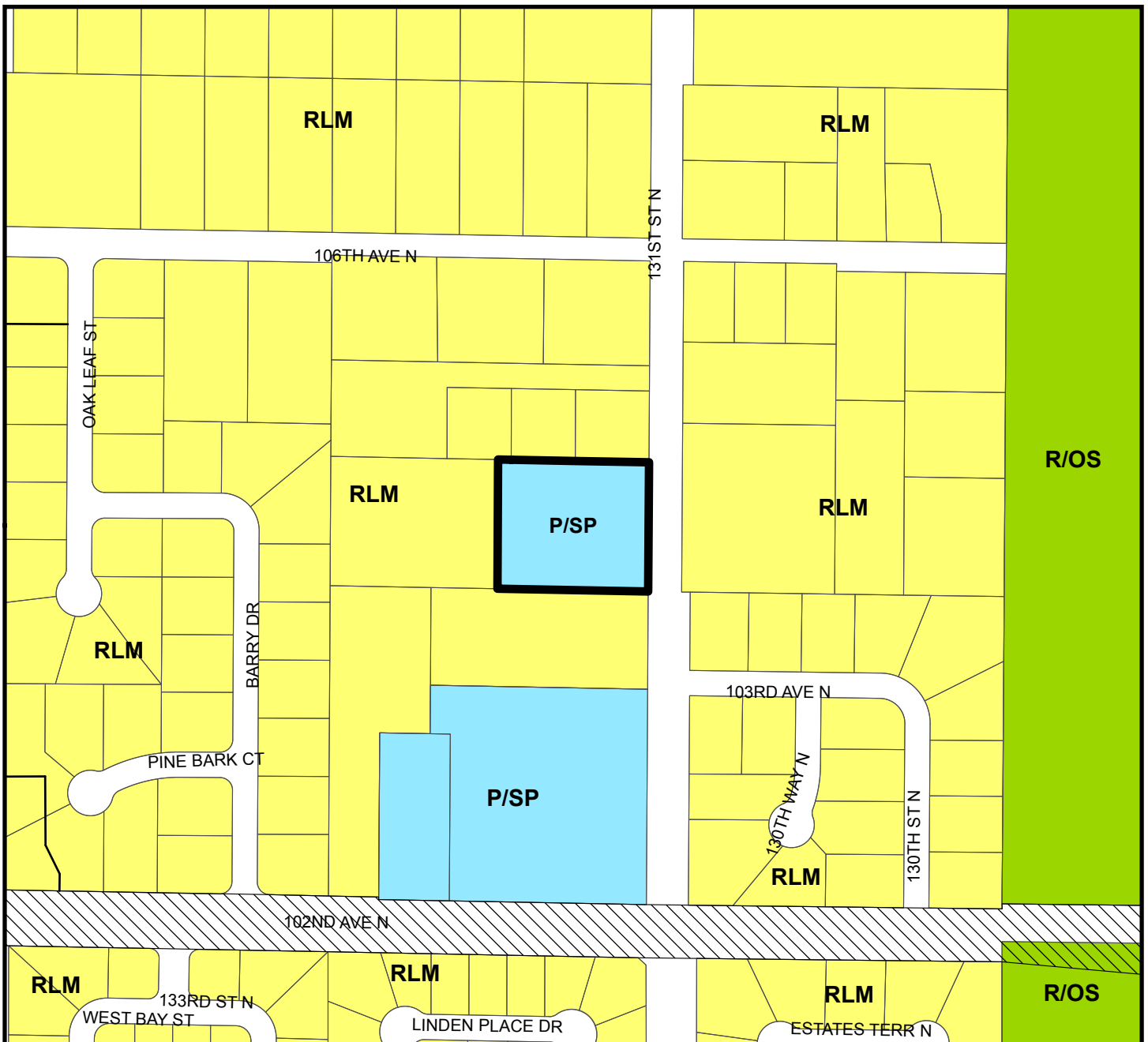
FROM: Residential Low Medium

AREA: 1.8 Acres

JURISDICTION: Pinellas County

TO: Public/Semi-Public





Countywide Plan Map Categories

- Residential Low Medium
- Public/Semi-Public
- Recreation/Open Space
- Scenic/Noncommercial Corridor

Map 5 - Proposed Countywide Plan Map

CASE #: CW17-8

FROM: Residential Low Medium

AREA: 1.8 Acres

JURISDICTION: Pinellas County

TO: Public/Semi-Public

