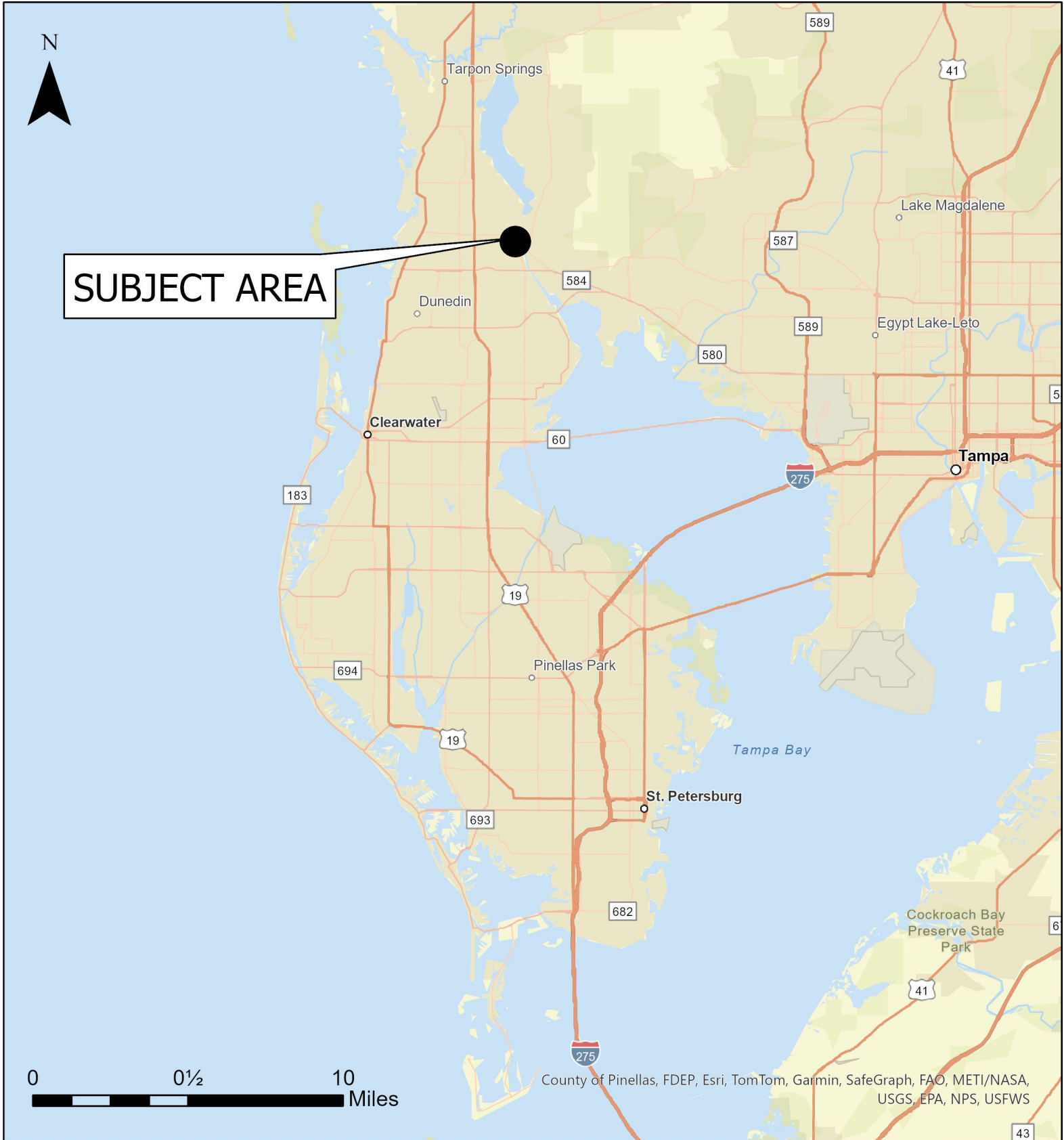


Case CW24-04

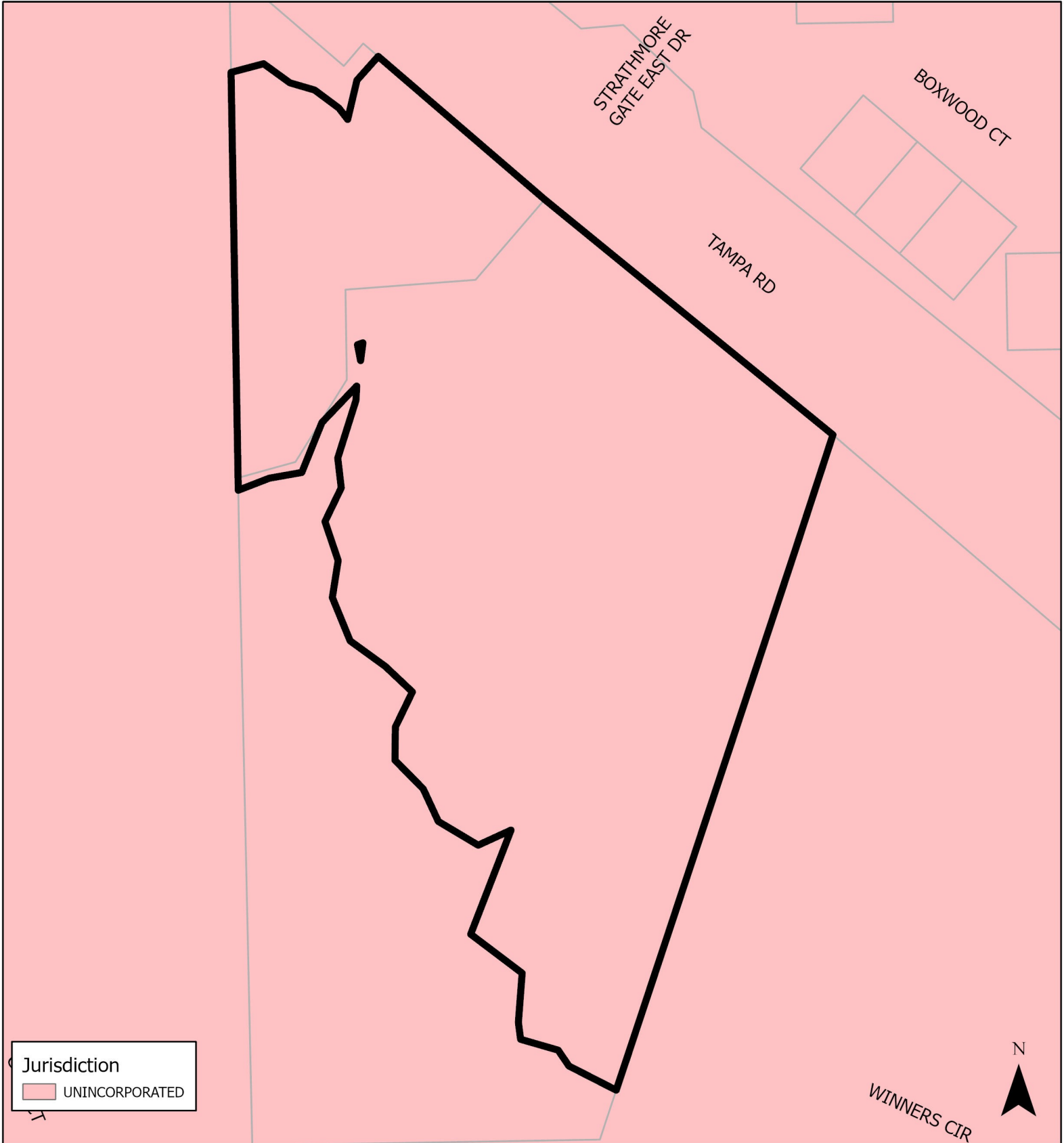
Map 1: Location Map



JURISDICTION: Pinellas County FROM: Preservation & Office
AREA: 3.4 acres m.o.l. TO: Public/Semi-Public

Case CW24-04

Map 2: Jurisdictional Map

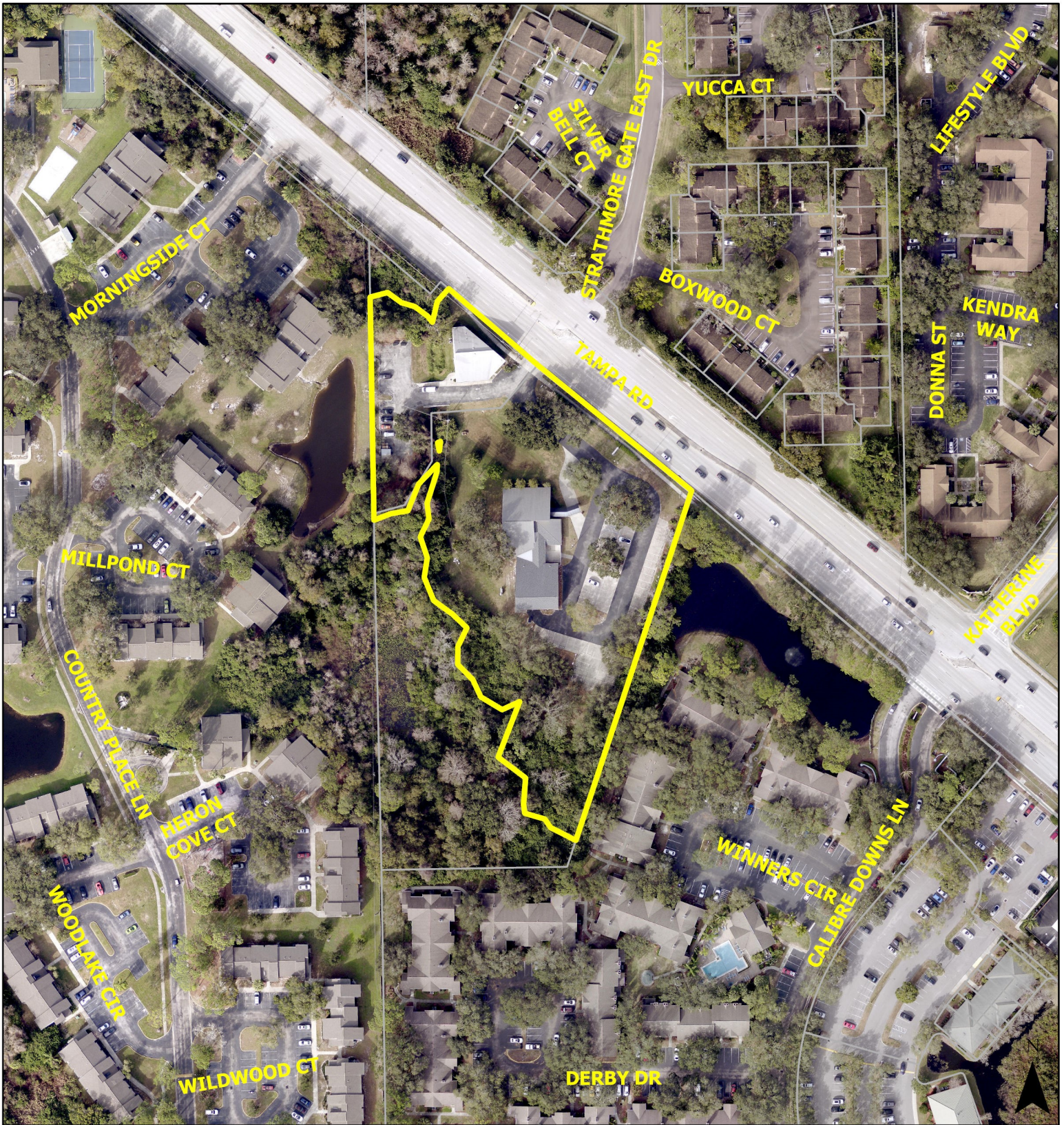


JURISDICTION: Pinellas County **FROM:** Preservation & Office
AREA: 3.4 acres m.o.l. **TO:** Public/Semi-Public



Case CW24-04

Map 3: Aerial Map

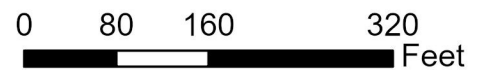


JURISDICTION: Pinellas County

FROM: Preservation & Office

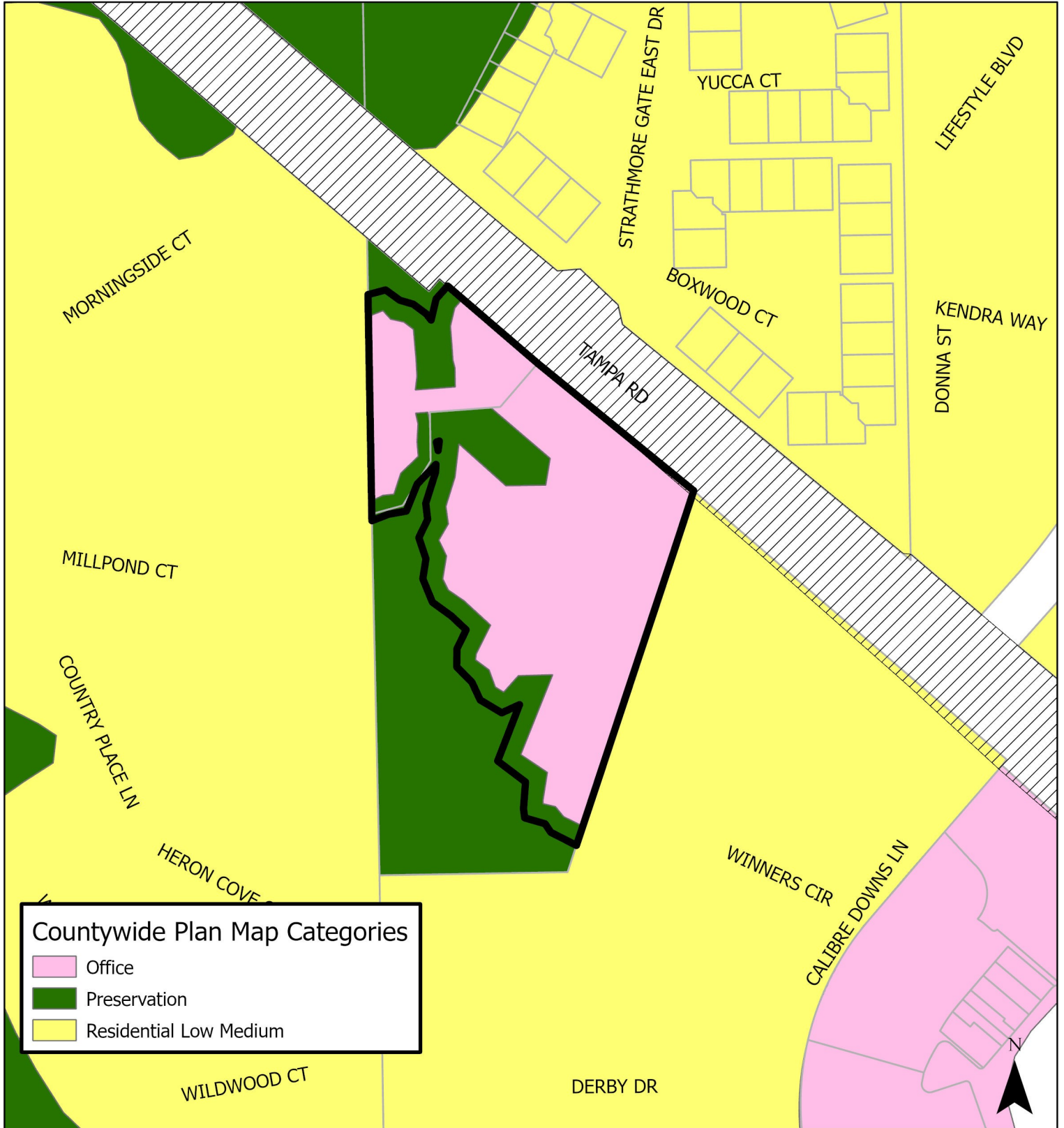
AREA: 3.4 acres m.o.l.

TO: Public/Semi-Public



Case CW24-04

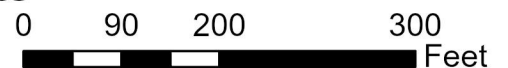
Map 4: Current Countywide Plan Map

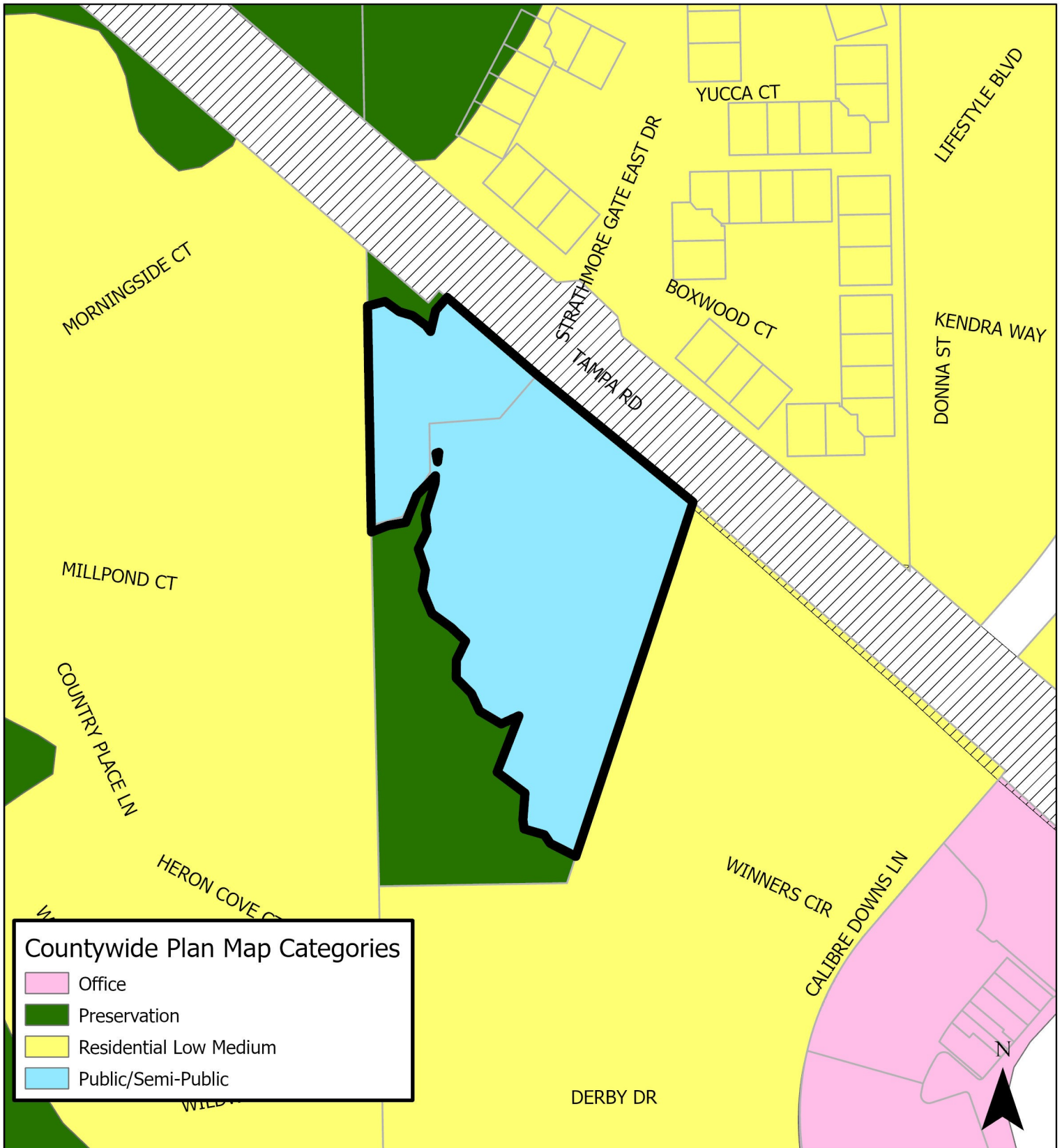


JURISDICTION: Pinellas County FROM: Preservation & Office

AREA: 3.4 acres m.o.l

TO: Public/Semi-Public





JURISDICTION: Pinellas County

FROM: Preservation & Office

AREA: 3.4 acres m.o.l.

TO: Public / Semi Public

