

Z/LU-25-11-18

Location Map

Zoning

From: R-6, Mobile Home Parks and Subdivisions

To: R-5, Urban Residential

Land Use

From: RL, Residential Low

To: RLM, Residential Low Medium

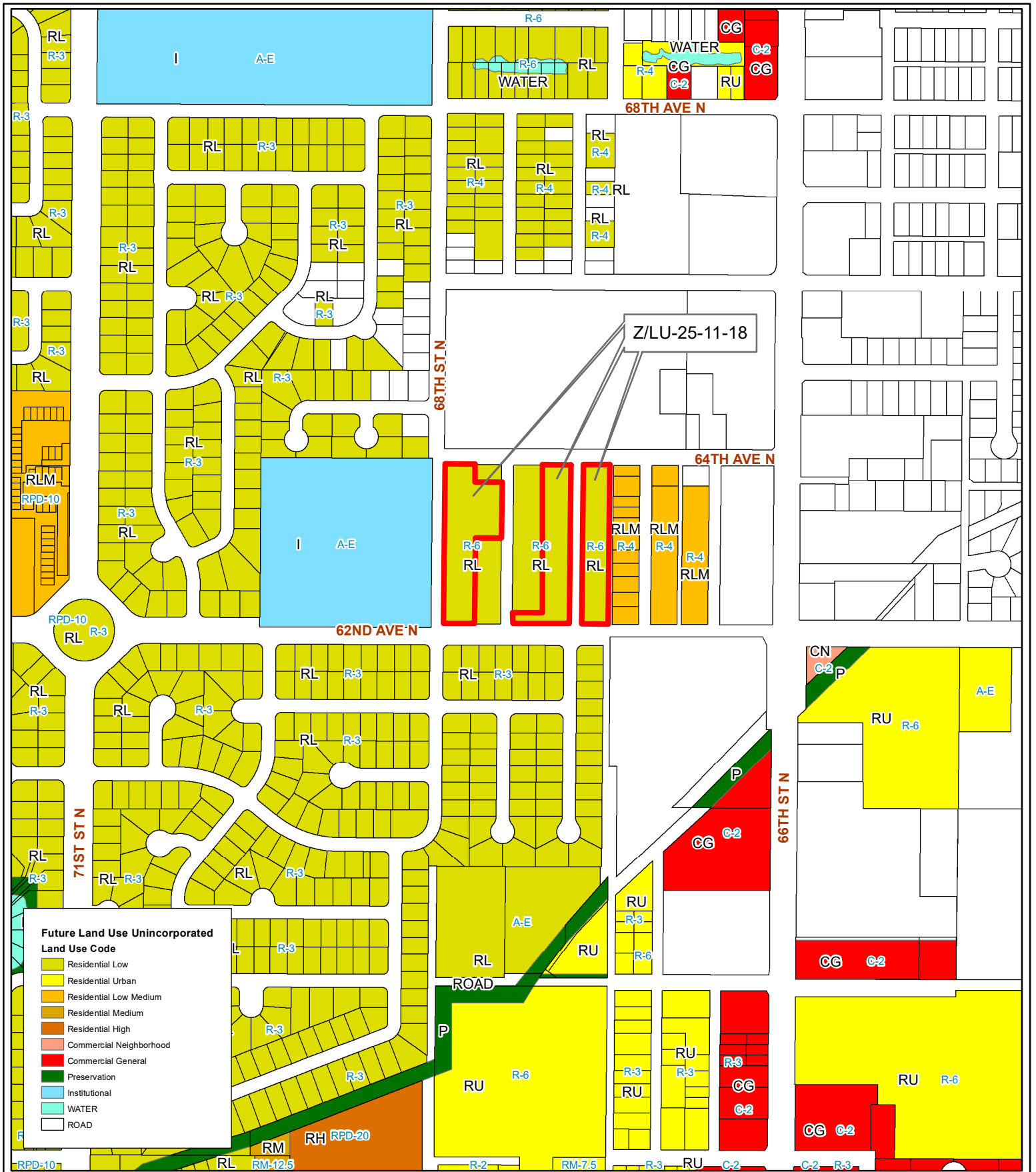
A Portion of 31/30/16/14598/004/0010, A Portion of 31/30/16/14598/005/0010, and 31/30/16/14598/003/0160
 Prepared by: Pinellas County Planning Department



Date: 10/11/2018



1 inch = 4.5 miles



Z/LU-25-11-18
Current Land Use & Zoning

Zoning From: R-6, Mobile Home Parks and Subdivisions
 To: R-5, Urban Residential

Land Use From: RL, Residential Low
 To: RLM, Residential Low Medium

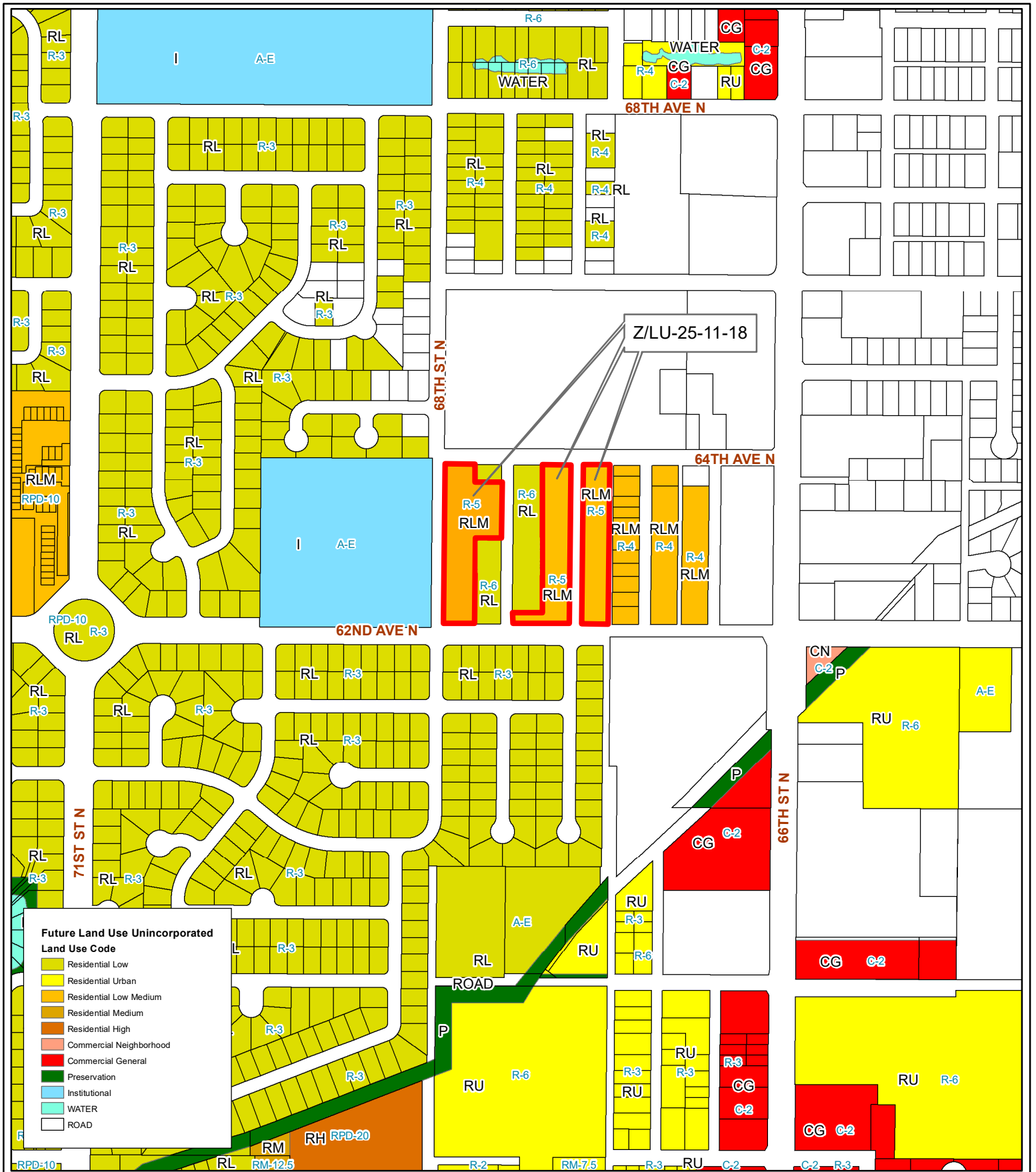
A Portion of 31/30/16/14598/004/0010, A Portion of 31/30/16/14598/005/0010, and 31/30/16/14598/003/0160
 Prepared by: Pinellas County Planning Department



Date: 10/11/2018



1 inch = 0.09 miles



Z/LU-25-11-18
Proposed Land Use & Zoning

Zoning From: R-6, Mobile Home Parks and Subdivisions
 To: R-5, Urban Residential

Land Use From: RL, Residential Low
 To: RLM, Residential Low Medium

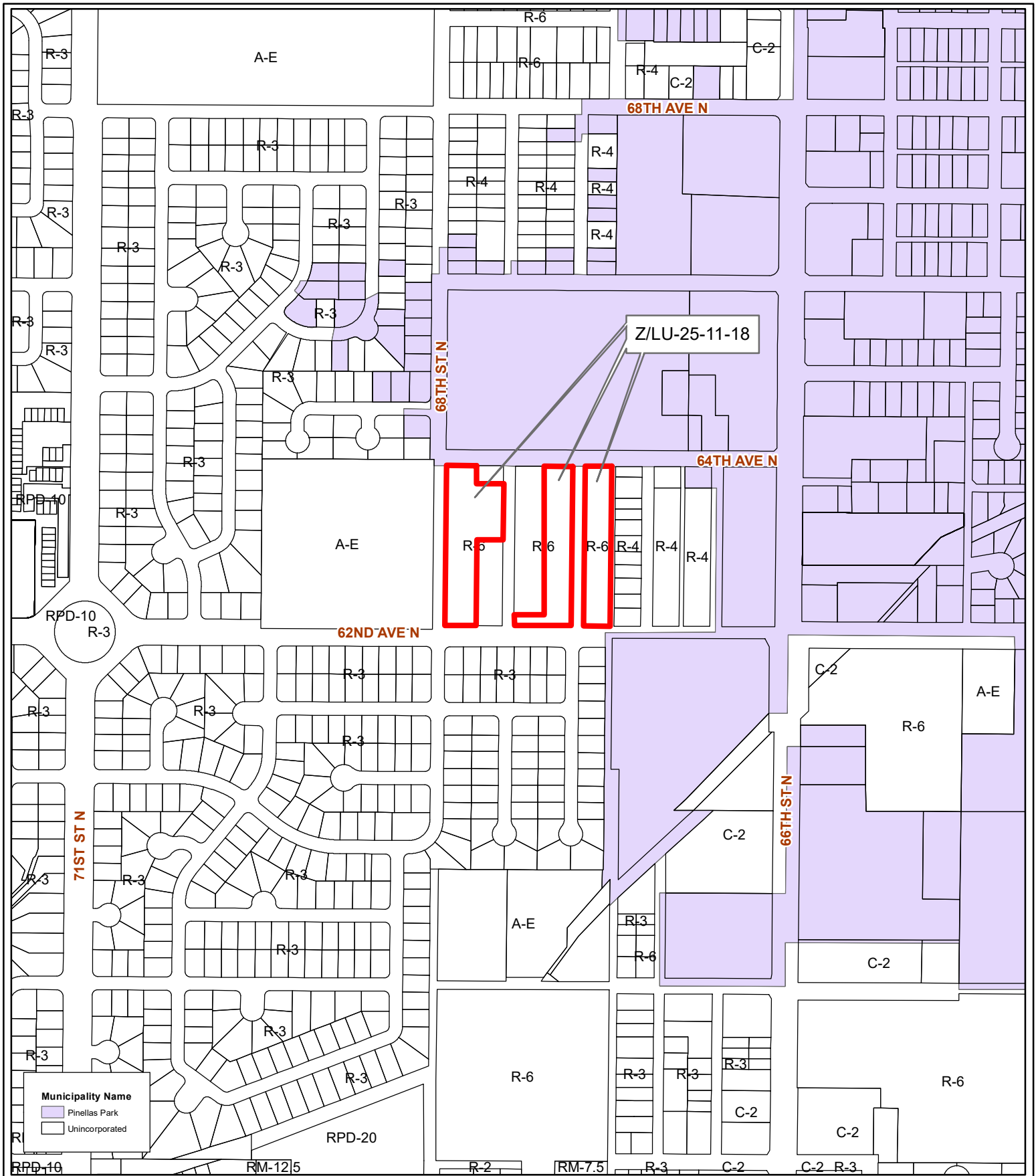
A Portion of 31/30/16/14598/004/0010, A Portion of 31/30/16/14598/005/0010, and 31/30/16/14598/003/0160
 Prepared by: Pinellas County Planning Department



Date: 10/11/2018



1 inch = 0.09 miles



Municipality Name
 Pinellas Park
 Unincorporated

Z/LU-25-11-18
Municipal Map

Zoning From: R-6, Mobile Home Parks and Subdivisions
 To: R-5, Urban Residential
Land Use From: RL, Residential Low
 To: RLM, Residential Low Medium

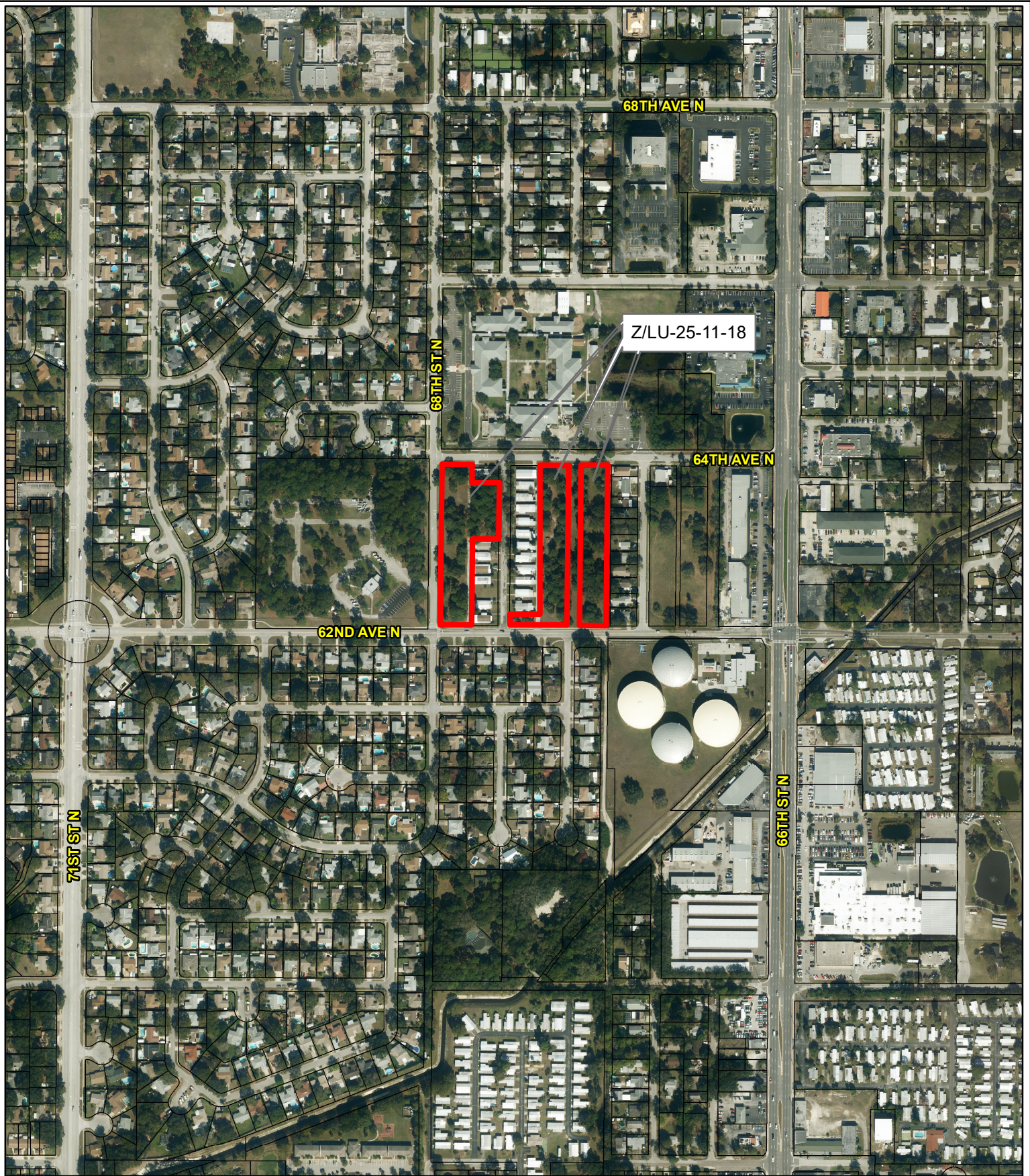


A Portion of 31/30/16/14598/004/0010, A Portion of 31/30/16/14598/005/0010, and 31/30/16/14598/003/0160
 Prepared by: Pinellas County Planning Department



Date: 10/11/2018

1 inch = 0.09 miles



Z/LU-25-11-18

Aerial Map

Zoning

From: R-6, Mobile Home Parks and Subdivisions

To: R-5, Urban Residential

Land Use

From: RL, Residential Low

To: RLM, Residential Low Medium

A Portion of 31/30/16/14598/004/0010, A Portion of 31/30/16/14598/005/0010, and 31/30/16/14598/003/0160
 Prepared by: Pinellas County Planning Department



Date: 10/11/2018



1 inch = 0.09 miles