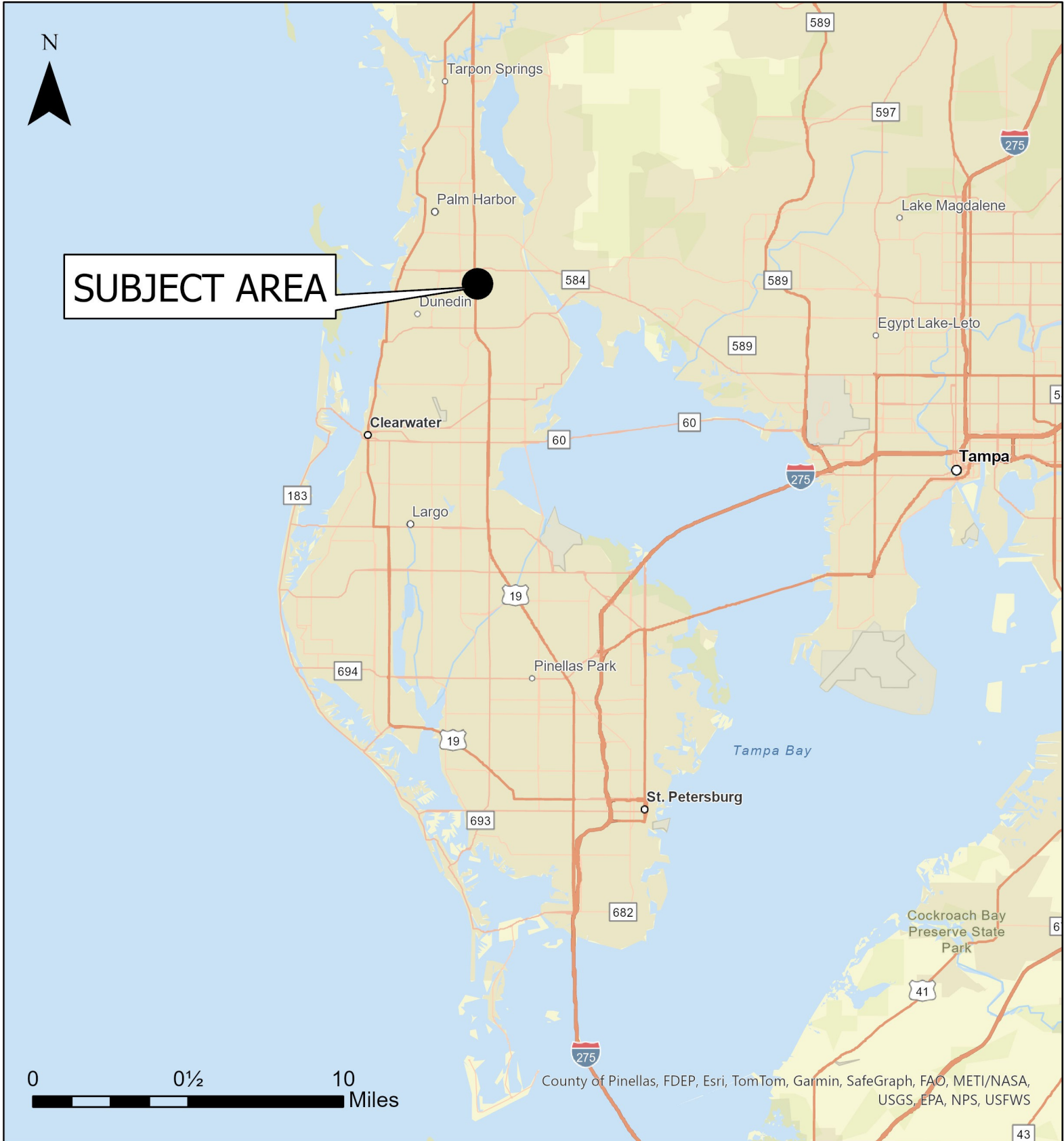


Case CW24-11

Map 1: Location Map



JURISDICTION: Pinellas County

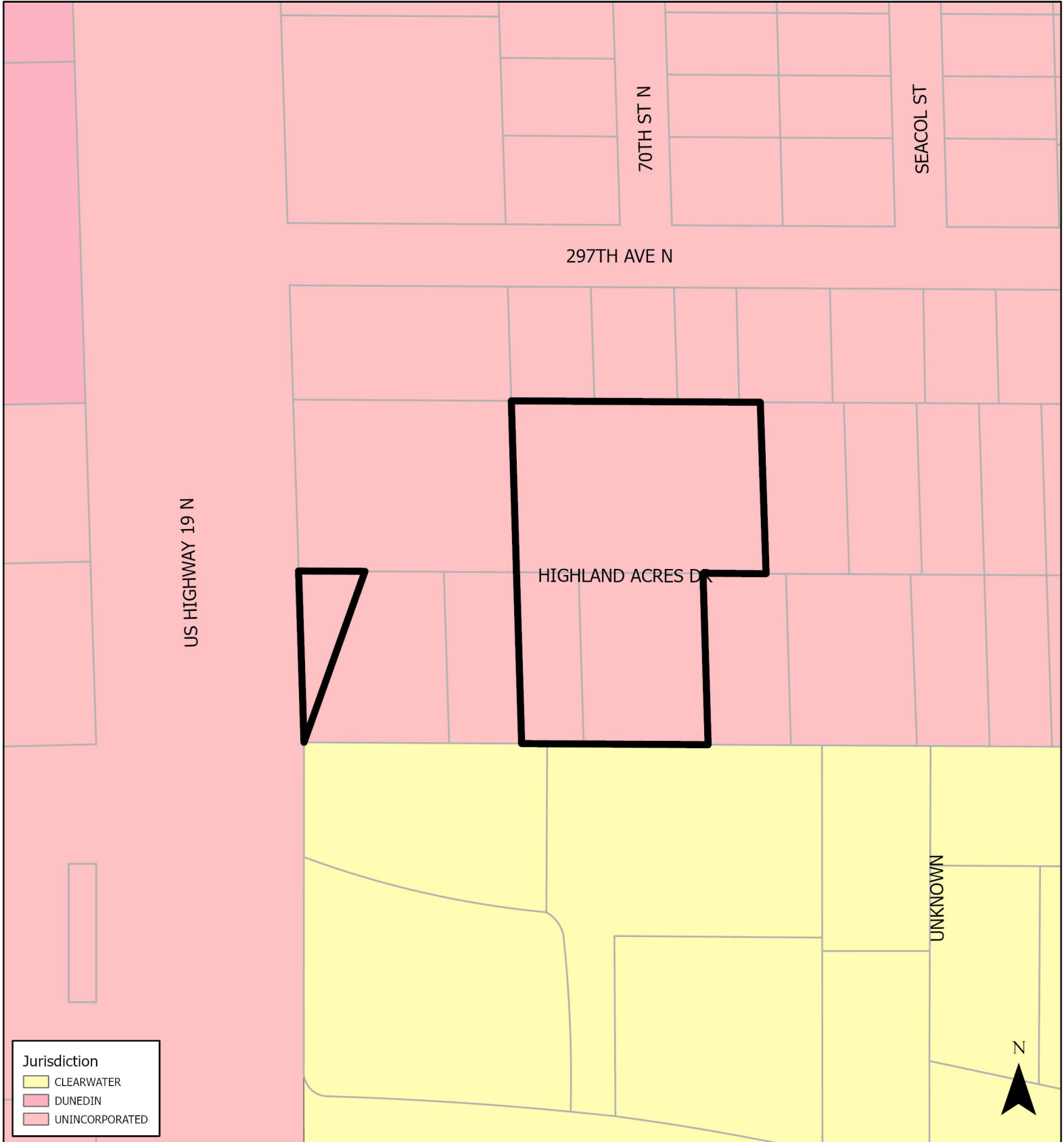
**FROM: Residential Low Medium
& Preservation**

AREA: 1.7 acres m.o.l.

TO: Retail & Services

Case CW24-11

Map 2: Jurisdictional Map

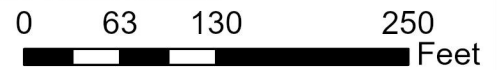


JURISDICTION: Pinellas County

FROM: Residential Low Medium & Preservation

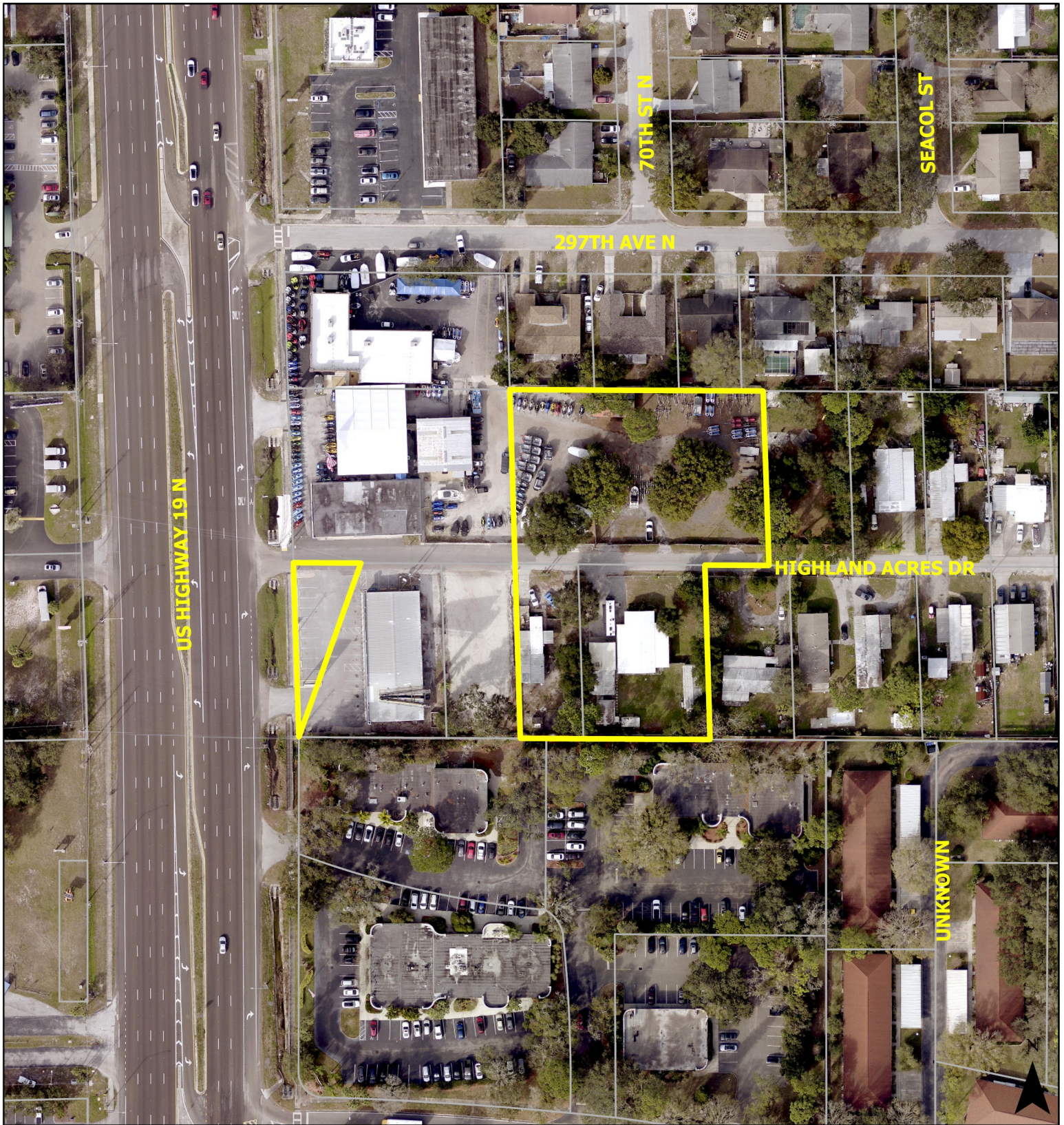
AREA: 1.7 acres m.o.l.

TO: Retail & Services



Case CW24-11

Map 3: Aerial Map



JURISDICTION: Pinellas County

FROM: Residential Low Medium & Preservation

AREA: 1.7 acres m.o.l.

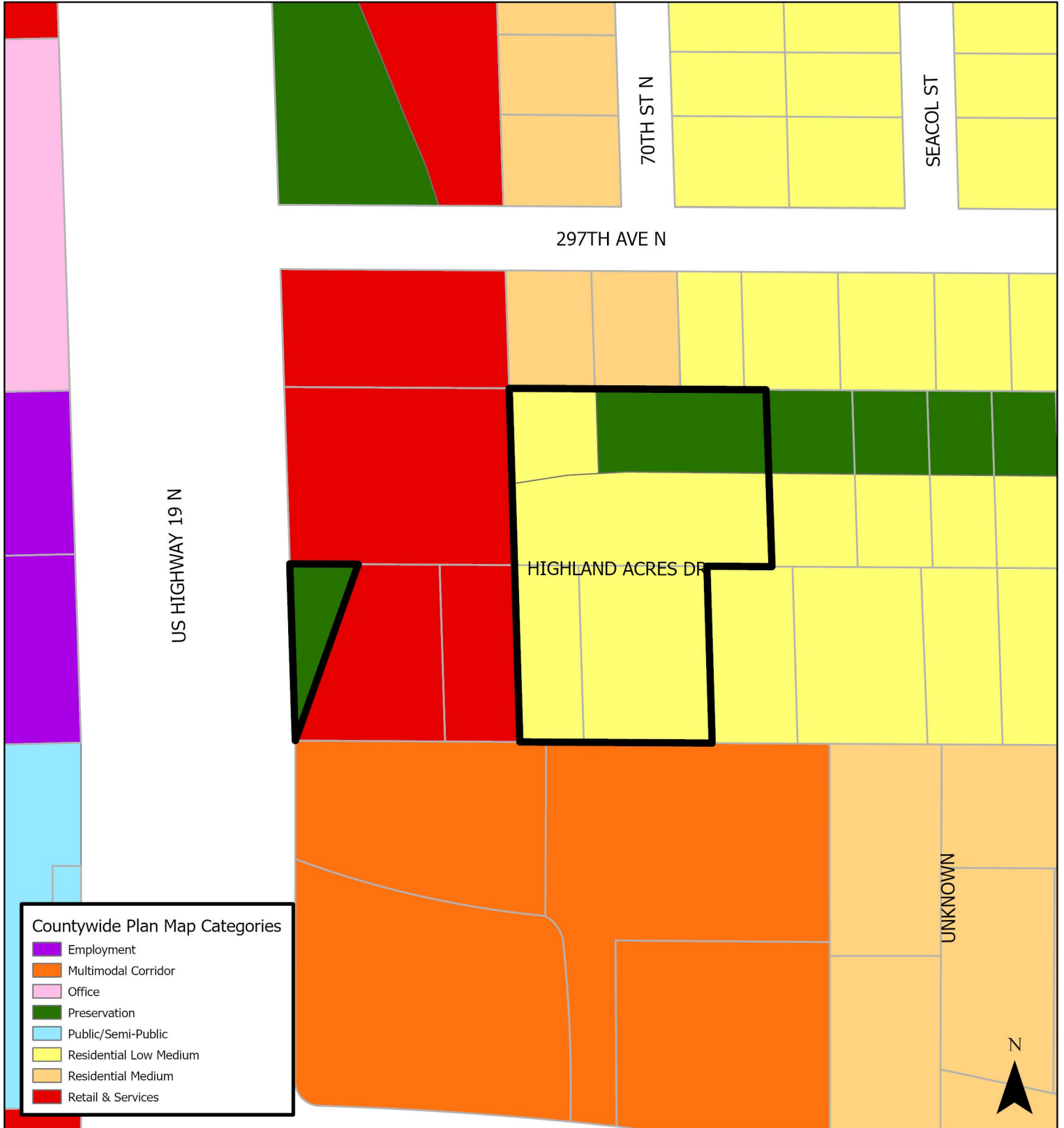
TO: Retail & Services

0 62.5 125 250
Feet



Case CW24-11

Map 4: Current Countywide Plan Map

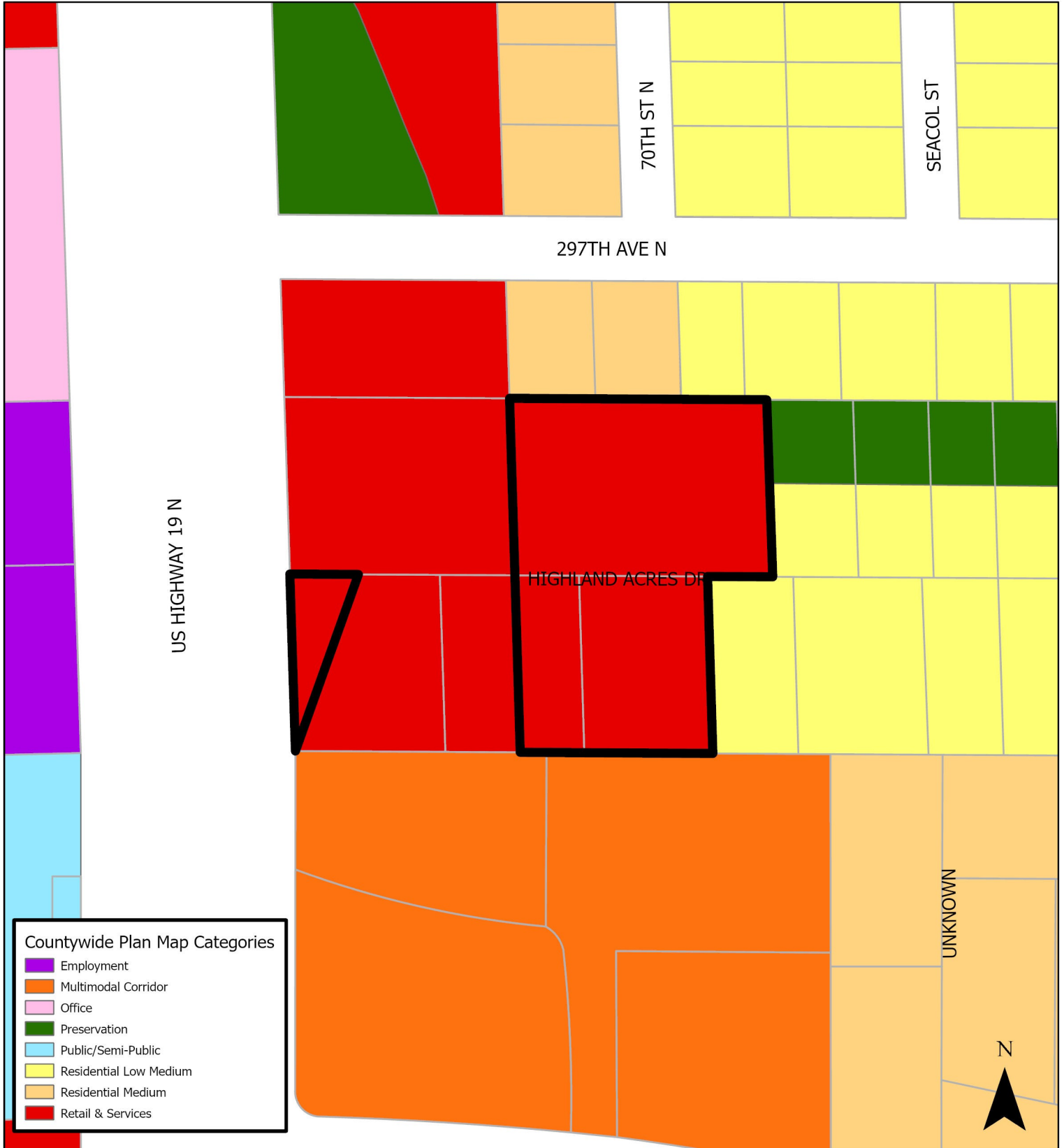


JURISDICTION: Pinellas County FROM: Residential Low Medium & Preservation

AREA: 1.7 acres m.o.l

TO: Retail & Services

0 60 100 300 Feet



JURISDICTION: Pinellas County

FROM: Residential Low Medium & Preservation

AREA: 1.7 acres m.o.l.

TO: Retail & Services

