

‘Leveling Up’

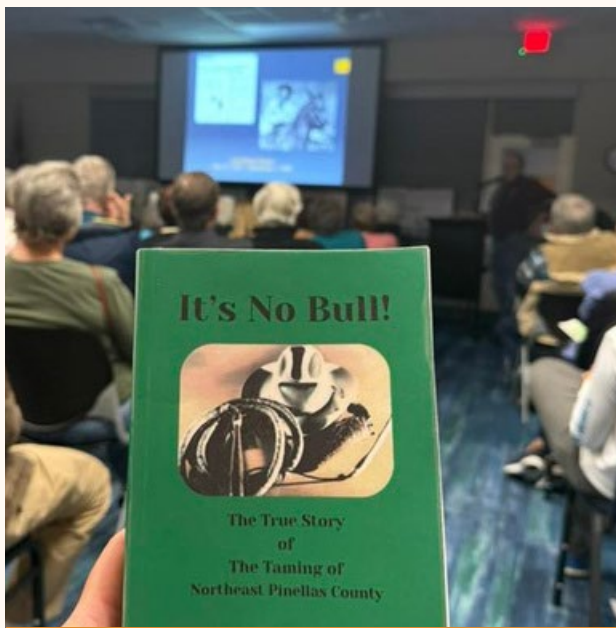
East Lake  
Community  
Library

FY 2027



Presented By: Anne-Máire Nurnberger





Local History



Classes & Events



Arts & Crafts



Local Art Displays



Community Food Pantry



Learning Opportunities

# A Center For Our Community

## Highlights of FY 2026



Active Teen Organizations



Book Release Events



Community Garden



Outreach & Partnerships



Supply & Gift Drives



Volunteer Opportunities



East Lake Rotary's Cruisin' The Park



East Lake Fire Rescue Hose Down



East Lake Parks & Rec Deck the Rec



Spreading Our Wings Capital Campaign



Council of North County Neighborhoods

# Special Events From Your Library FY 2026

# Special Recognition

## YOUTH VOLUNTEER PROGRAM

East Lake Community Library is celebrating its **highest youth volunteer participation ever** !

We're proud to serve as an official location where local middle and high school students can earn service hours for **Bright Futures** , **NJHS** , and **ROTC**

Teens also led fundraising efforts, with all proceeds reinvested into improving the Teen program and facilities at East Lake.

2025/2026 School Year



21 students



33 students



Teen Volunteer Hours Logged FY 26 (Oct 702

–April):

# ELCL BY THE NUMBERS

FY 2025



13,290

RESIDENTS  
WITH A  
LIBRARY  
CARD



142,624

PHYSICAL AND  
DIGITAL ITEMS  
AVAILABLE



530 PROGRAMS  
& EVENTS

ATTRACTING OVER

14,77

ATTENDEES



70,530

VISITORS  
USED  
THE  
LIBRARY



ANSWERED

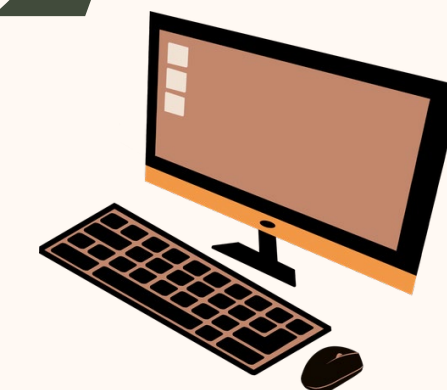


27,138

REFERENCE,  
READERS ADVISORY,  
AND TECHNOLOGY  
QUESTIONS

7,739<sup>2</sup>

CONNECT TO THE  
WIFI OR USE A  
PUBLIC COMPUTER



# PROJECTED REVENUE AND EXPENSES FY 2027



Fees & Services - 1%  
 Friends of the Library - 1.7%  
 Fundraising/Grants - 1.8%

PPLC - 23.9%

Ad Valorem - 71.6%

Revenues



PHCSA - 5%  
 3 PHCSA Employees

Maintenance, Utilities, & Insurance - 10%

Operational - 10%

Materials & Resources - 10%  
 Includes physical and electronic materials,  
 access to databases, and online resources

Personnel - 65%  
 9 Full Time Employees  
 12 Part Time Employees

Expenses

ANTICIPATED FY 2027 OPERATING COST \$1,467,000



# Revenue Loss

## Passports

DUE TO A RECENT U.S. DEPARTMENT OF STATE RULING, NONPROFIT LIBRARIES CAN NO LONGER SERVE AS PASSPORT ACCEPTANCE FACILITIES. THIS CHANGE HAS COST US **\$40,000 IN ANNUAL REVENUE** AND IS A MAJOR LOSS FOR THE COMMUNITY, AS WE WERE THE ONLY PASSPORT FACILITY IN EAST LAKE .



WE ARE HOPEFUL THE [PASSPORT SERVICES ACCESS ACT \(H.R. 6997\)](#), A BIPARTISAN BILL INTRODUCED ON JANUARY 13, 2026 WILL REINSTATE PASSPORT SERVICES AT NONPROFIT LIBRARIES.

# Budget Efficiencies



We ♥ our  
Volunteers

01

## Reduction in Insurance costs

A new insurance arrangement with Pinellas County and PHSCA now covers county owned buildings, yielding annual savings of over \$20,000.

02

## Staff Restructuring & Consolidation of Duties

We streamlined operations by combining the Assistant Director responsibilities with the Head of Technical Services position. This restructuring allowed us to eliminate one full-time, benefited role, generating an annual savings of \$60,000.

In addition, we reduced the IT manager position to part-time, which enabled us to eliminate another full-time, benefited role - a saving of \$25,000 per year.

03

## 99 Dedicated Volunteers Supplementing Staff

ELCL coordinates a team of 99 volunteers who supplement staff to save in personnel costs and offer meaningful opportunities to teens, adults, and seniors.

# Turning Plans Into Progress: FY 2027

Construction begins on an expanded library

## 2026 CONSTRUCTION TIMELINE



**PLANS**  
Renderings of proposed expansion finalized



**GROUND BREAKING**  
Groundbreaking scheduled

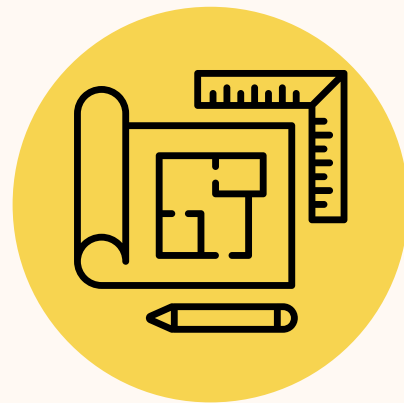
SPRING 26

SUMMER 26

FALL 26

WINTER 26

**DESIGN**  
Design phase and selection of architectural firm



**CONTRACTOR**  
Selection of contractor and beginning of construction phase



Toppe Consultants, Inc.  
Architects Planners

ADULT SERVICES DEPARTMENT





**GOAL**  
**7 MILLION**

# Capital Campaign

Building Together - Investing in Our Library's Future

## CAPITAL CAMPAIGN

Capital Campaign Goal  
\$1,500,000  
(target)

\$110,000  
Capital Campaign  
(already secured)

Foundation Funds\*  
\$1,000,000  
(already secured)

Penny for Pinellas\*  
\$4,500,000  
(already secured)



- Supports the library expansion by raising funds to supplement Penny for Pinellas construction funding
- Eases the load on county resources so more can be accomplished with the project
- Every donation directly invests in expanded programs, modern facilities, and a stronger community hub

# Thank You

for your continued support of the  
East Lake Community Library



---

Telephone  
727-773-2665 (BOOK)

Address  
4125 East Lake Road  
Palm Harbor, FL 34685

Website  
[www.eastlakelibrary.org](http://www.eastlakelibrary.org)