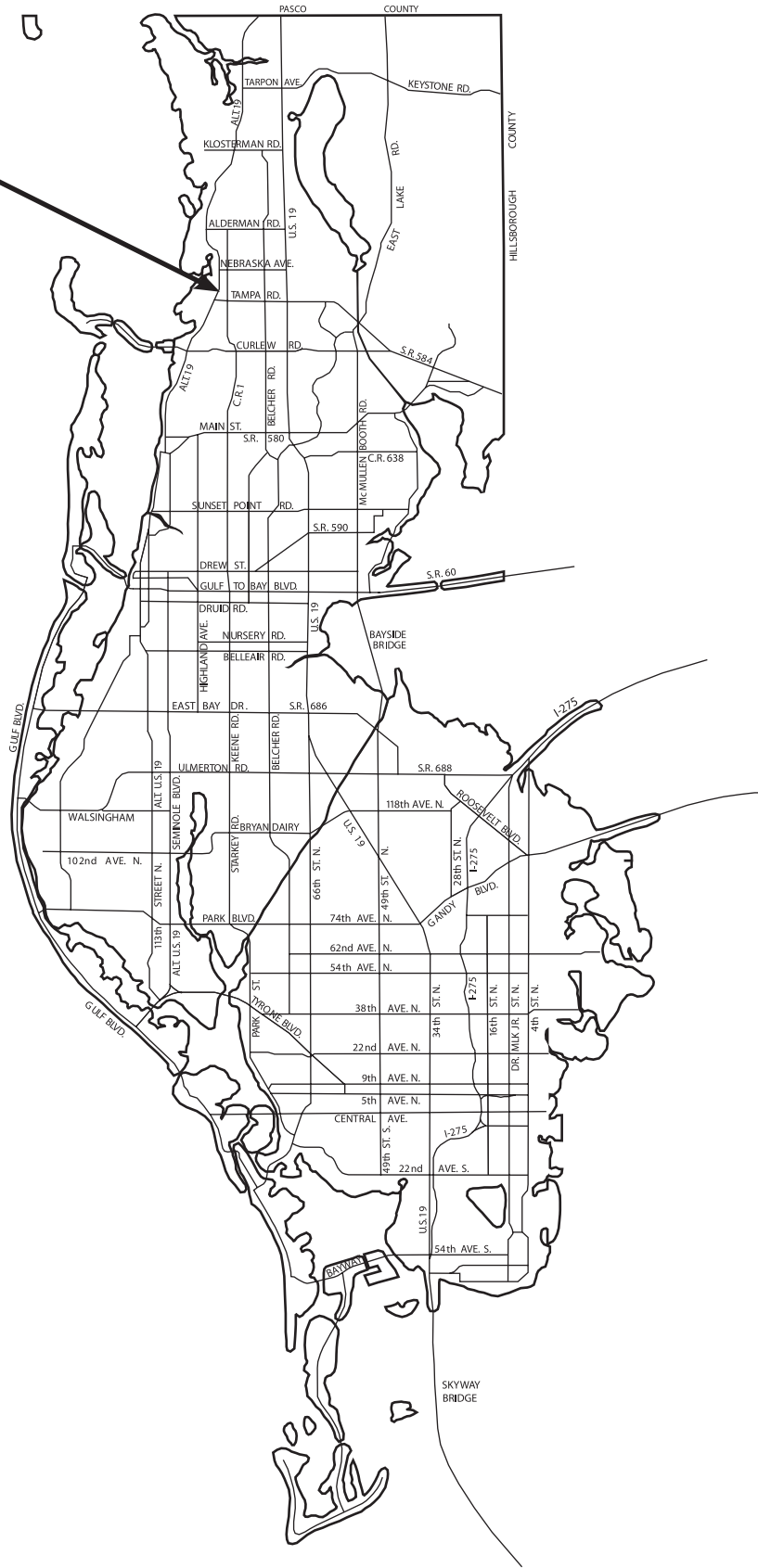


**LOCATION MAP**

**CU-11-3-16**



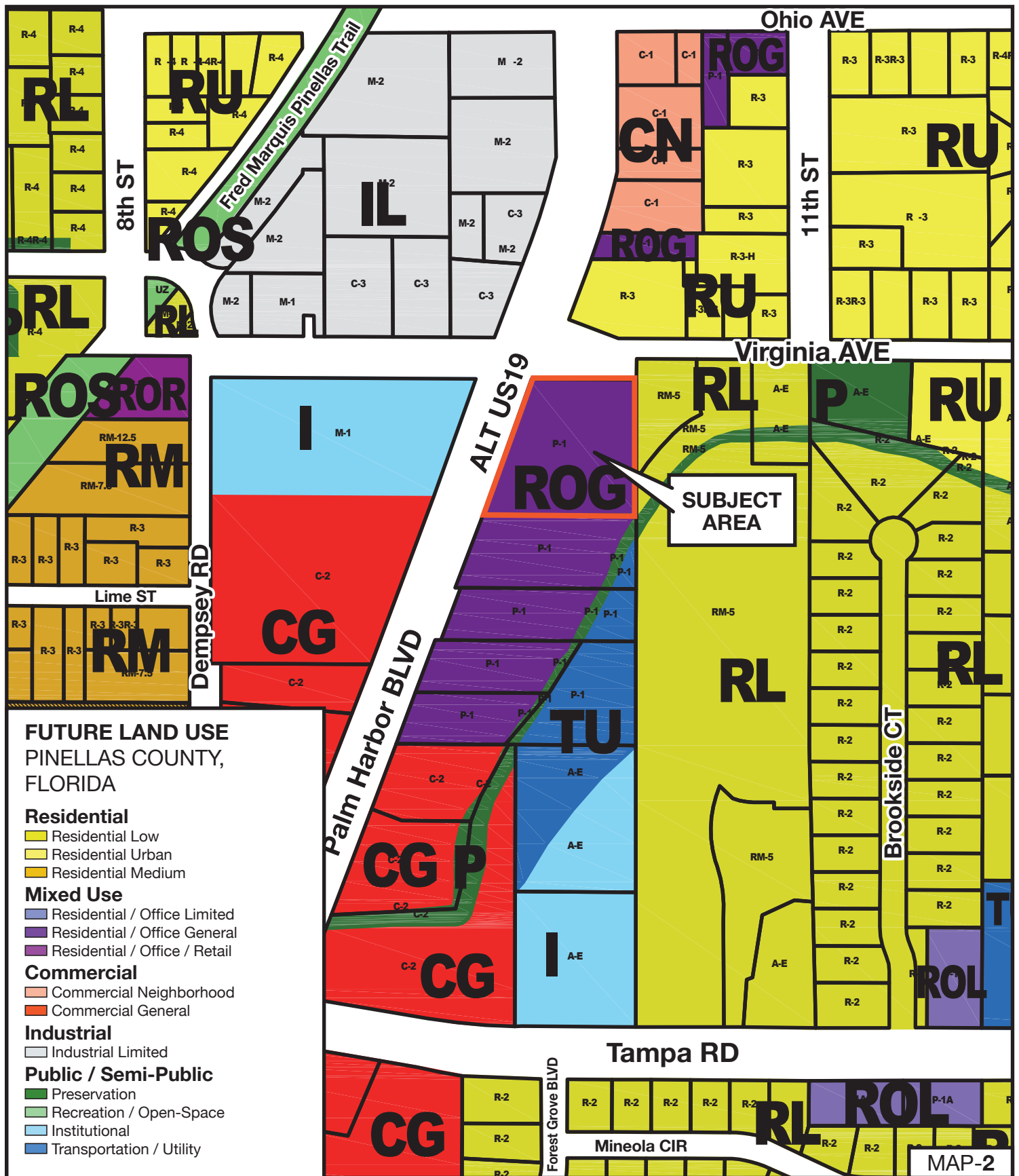
**MAP-1**

**CU-11-3-16**

**Request:** A Conditional Use to allow the dispensing of alcohol by a fraternal organization for on-premises consumption in a P-1 zone.

Parcel I.D. 11/28/15/00000/110/0600  
 Prepared by: Pinellas County Planning Department January 2016





**CU-11-3-16**

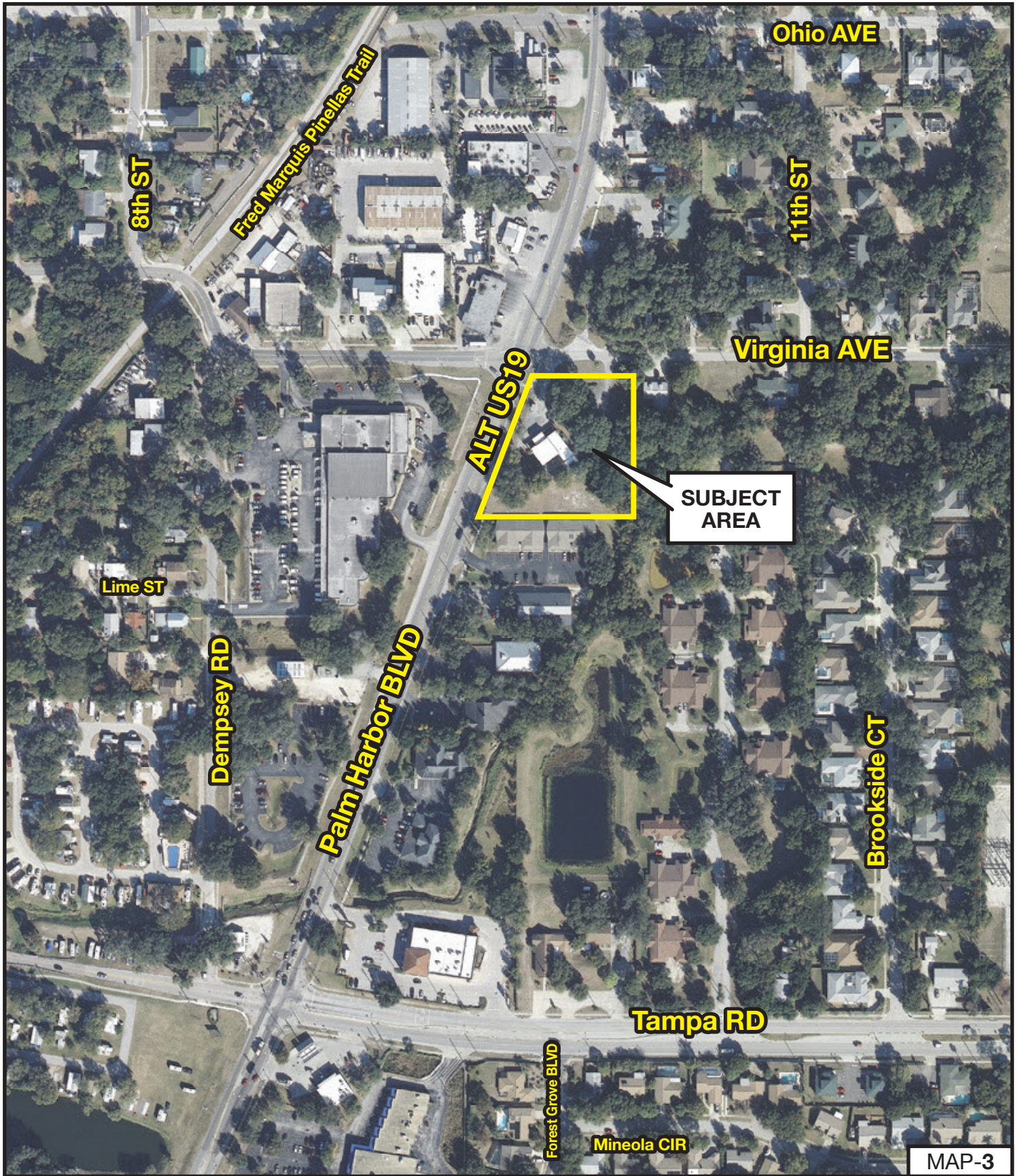
**Request:** A Conditional Use to allow the dispensing of alcohol by a fraternal organization for on-premises consumption in a P-1 zone.

Parcel I.D. 11/28/15/00000/110/0600

Prepared by: Pinellas County Planning Department January 2016



MAP-2



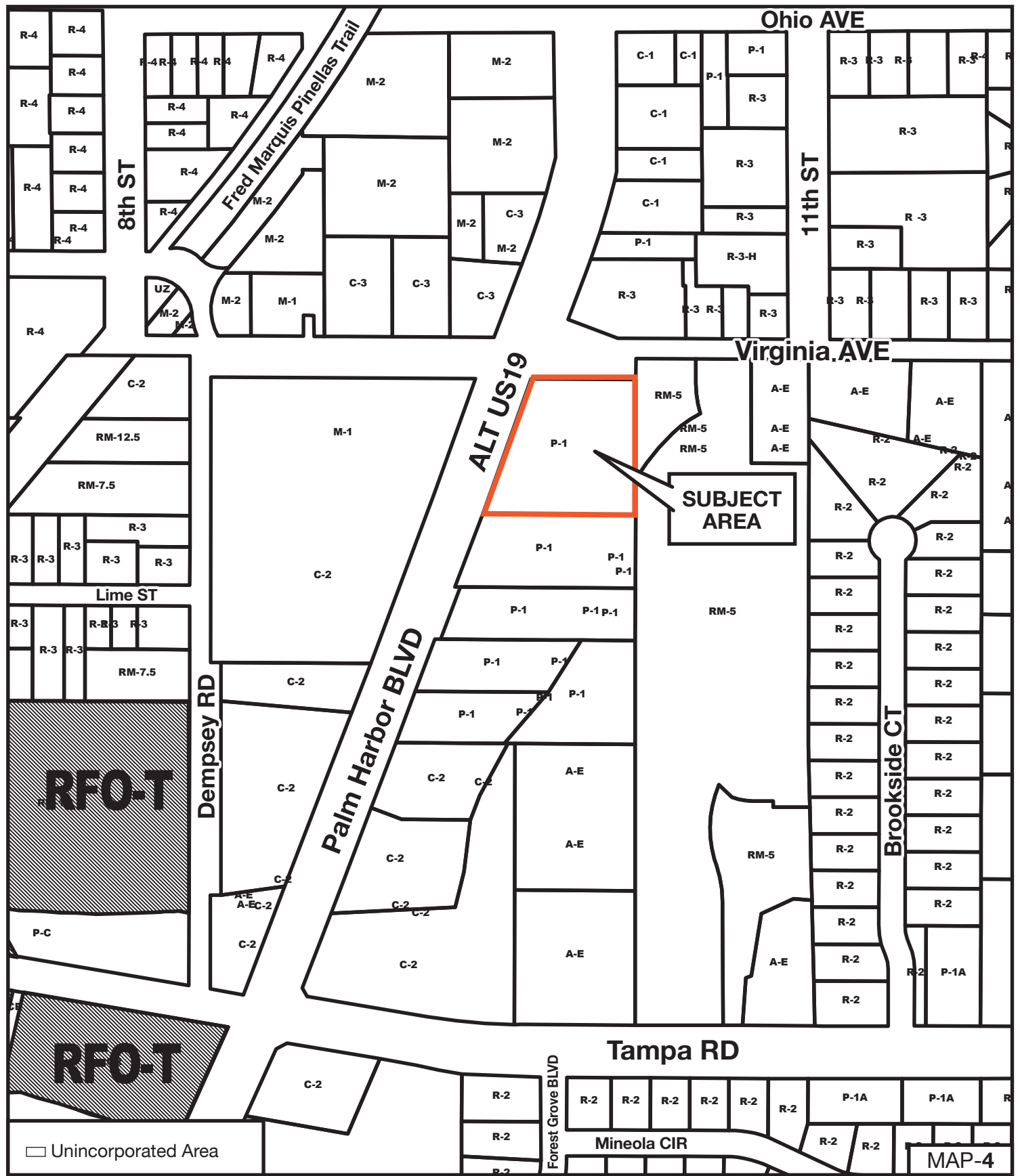
MAP-3

**CU-11-3-16**

**Request:** A Conditional Use to allow the dispensing of alcohol by a fraternal organization for on-premises consumption in a P-1 zone.

Parcel I.D. 11/28/15/0000/110/0600  
 Prepared by: Pinellas County Planning Department January 2016





**CU-11-3-16**

**Request:** A Conditional Use to allow the dispensing of alcohol by a fraternal organization for on-premises consumption in a P-1 zone.

Parcel I.D. 11/28/15/00000/110/0600

Prepared by: Pinellas County Planning Department January 2016

