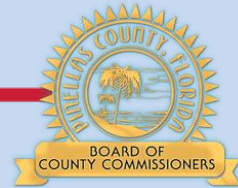




Doing Things!

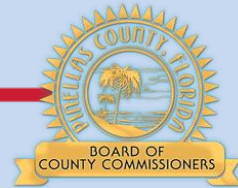
**PLANNING DEPARTMENT
&
PARTNERS**





LEALMAN COMMUNITY CAMPUS

MAKING A PROPERTY A PLACE !



RECRUITMENT & REVIEW PROCESS

- 30 Day Letter of Interest submission period
- 19 Organizations and 7 County Departments responded
- Evaluation committee review > March 21, 2018
 - Education, workforce development, recreation, un-met critical services, catalyzing programs that assist redevelopment, proven track record, sustainable business model, residents served, anchor tenants with broad user base, synergies with County programs and other service providers
 - Recommendations have been provided to the CRA Citizens Advisory Committee for review at the next regular meeting in April.
 - One advisory committee member served on the evaluation committee



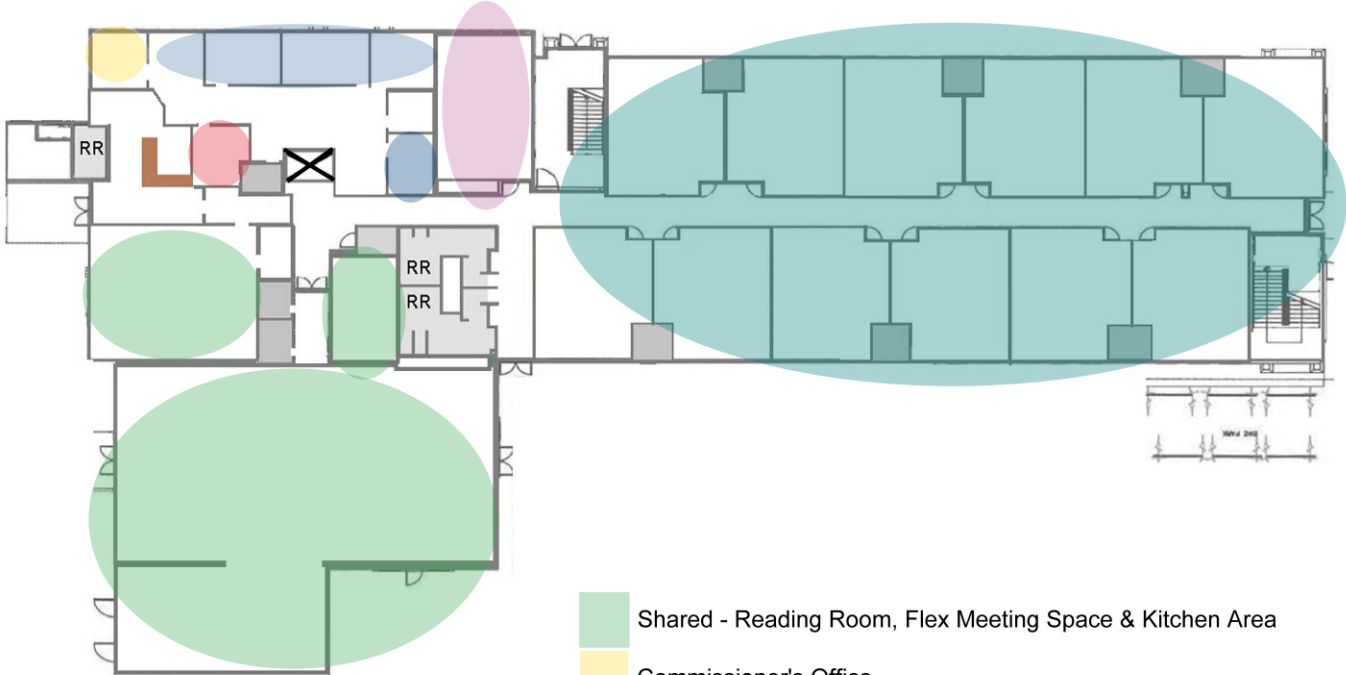
PRELIMINARY TENANT SELECTION

- Amskills Apprenticeship Foundation
- Bay Area Legal Services, Inc.
- Broach School of St. Petersburg
- Community Health Centers of Pinellas, Inc.
- Contemporary Housing Alternative of Florida, Inc.
- Dance Training School
- Edible Peace Patch Project, Inc.
- Excellerated Teaching Center/Academy
- Gulfcoast Legal Services
- Hope and Healing of Pinellas, Inc.
- Intercultural Advocacy Institute
- Neighborly Care Network
- Pinellas County Schools Adult Education (PTEC)
- Pinellas PAL *First Fruit Hydroponics Farm Inc.
- UF/IFAS Extension Family Nutrition Program
- YMCA Pre-school, Summer/Days out Camps, Senior Fitness, Dance, Healthy Foods Education, and Athletic Facility (Gymnasium) Management

PRELIMINARY SPACE PROGRAMMING

TWO STORY BUILDING 1st FLOOR

20,054 SF MOL
NOT TO SCALE

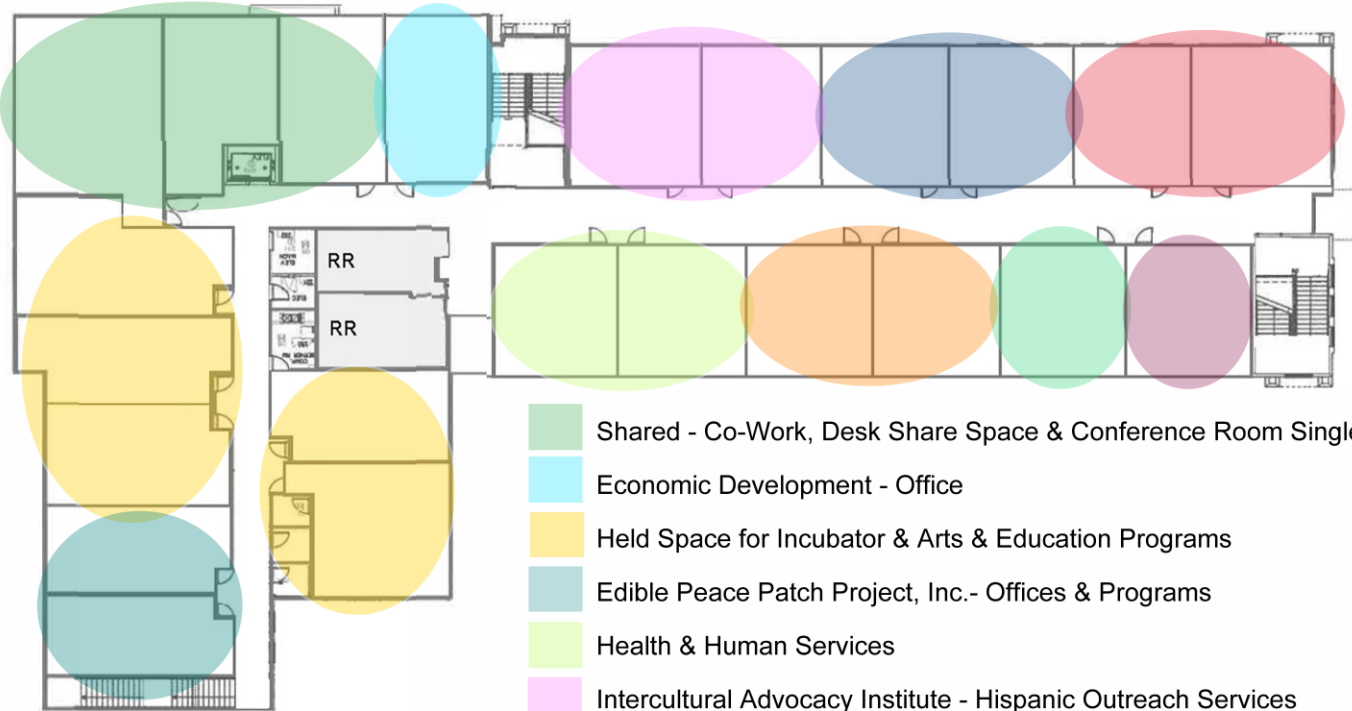


- Shared - Reading Room, Flex Meeting Space & Kitchen Area
- Commissioner's Office
- CRA Planning, County Flex Offices & Shared Conference Room
- Community Health Centers of Pinellas - Clinic/Health Screenings
- YMCA - Preschool
- County Kiosks & Self-Serve Computer Stations
(Animal Services, Utilities, Permitting, etc.)

PRELIMINARY SPACE PROGRAMMING

TWO STORY BUILDING 2nd FLOOR

20,392 SF MOL
NOT TO SCALE

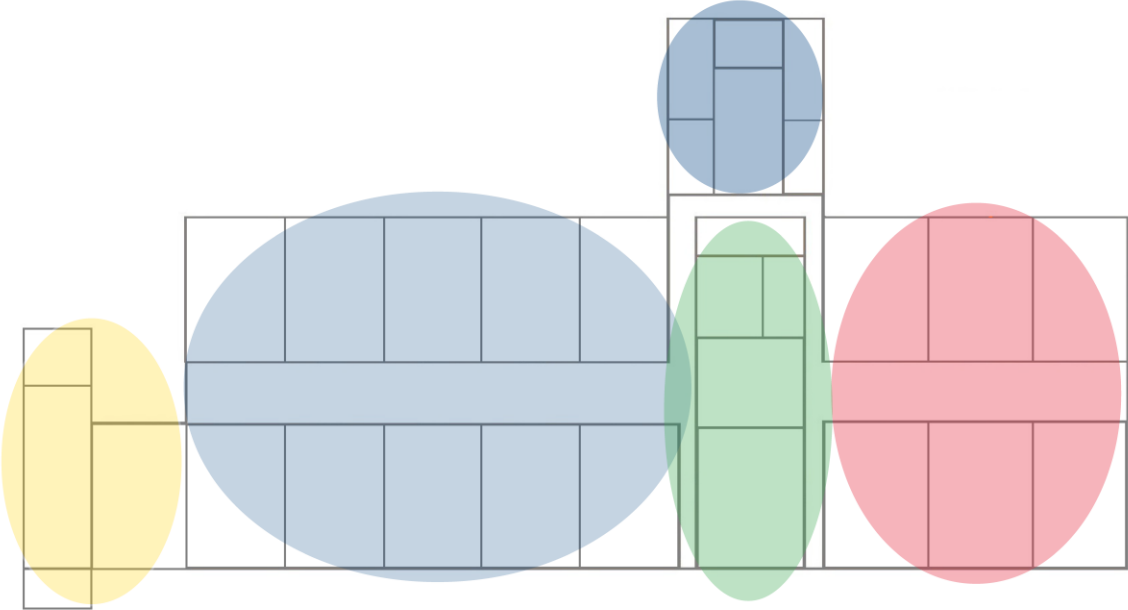


- Shared - Co-Work, Desk Share Space & Conference Room Single
- Economic Development - Office
- Held Space for Incubator & Arts & Education Programs
- Edible Peace Patch Project, Inc.- Offices & Programs
- Health & Human Services
- Intercultural Advocacy Institute - Hispanic Outreach Services
- PTEC - Adult Education Programs
- Neighborhood Care Network - Call Center & Vehicle Dispatch
- Computer Lab
- Office Build out (Bay Area Legal, Gulfcoast Legal)
- Held Space for Adult education/Workforce Dev. Programs

PRELIMINARY SPACE PROGRAMMING

SINGLE STORY BUILDING

20,392 SF MOL
NOT TO SCALE

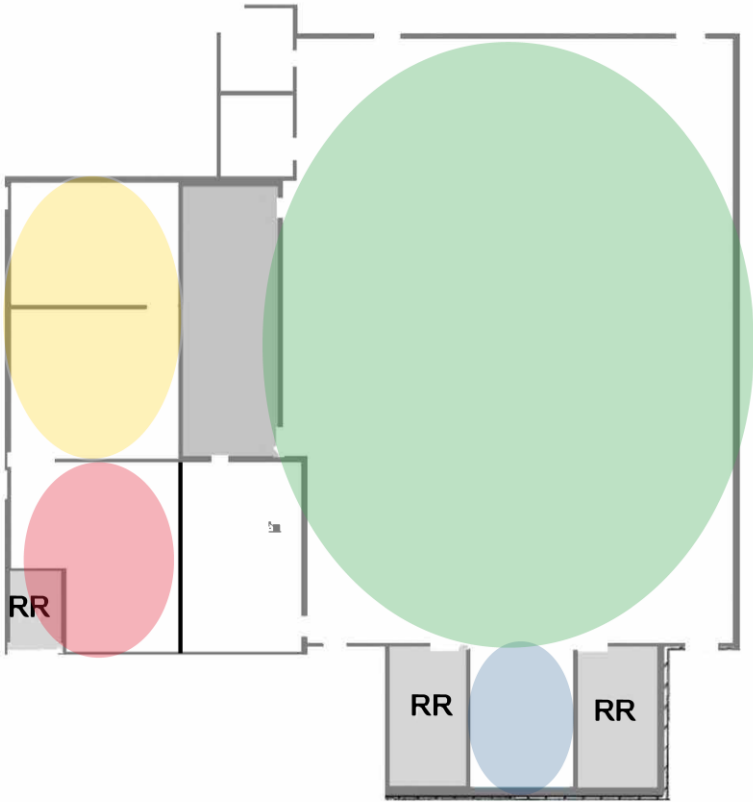


- Shared - Break room & Restrooms
- Broach School of St. Petersburg - Admin & Classrooms
- Excellerated Teaching Center/Academy
- Amskills Apprenticeship Foundation

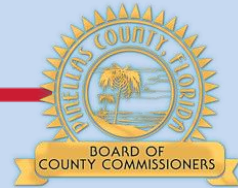
PRELIMINARY SPACE PROGRAMMING

GYMNASIUM BUILDING

15,400 SF MOL
NOT TO SCALE



- Shared - Gymnasium
- Gymnasium/Recreation Management Office
- UF/IFAS Extension - Office & Garden Educator Program
- Pinellas County Code Enforcement



NEXT STEPS

- EXECUTE LEASES, LICENSES AND OTHER AGREEMENTS