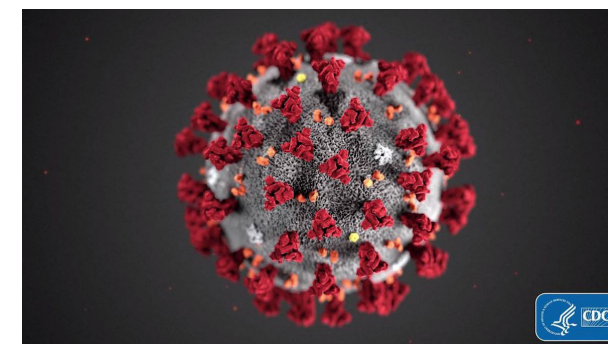


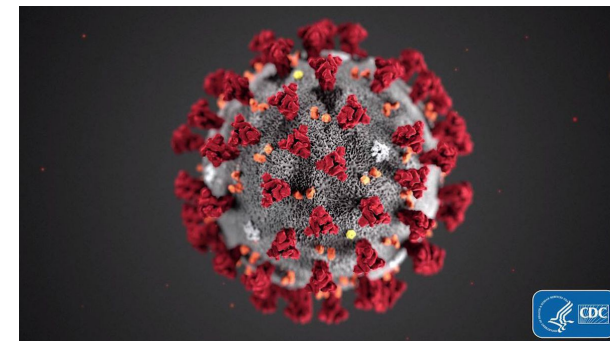
Pinellas Medical Examiner Workload 2019 vs 2020

- Total cases increased 88%
 - 1063 deaths related to COVID 19 (3/24/20-1/18/21)
- Autopsies increased 11% (12.8% District wide)
- Scene investigations increased 18%
- Drug related deaths increased 29% (123)



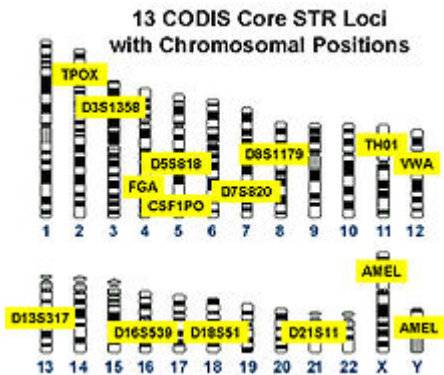
Pasco Medical Examiner Workload 2019 vs 2020

- Total cases increased 70%
 - 381 deaths related to COVID 19 (3/24/20-1/18/21)
- Autopsies increased 16%
- Scene investigations increased 30%
- Drug deaths increased 47% (91 more cases)



Forensic Laboratory FY20

- Postmortem toxicology 18% increase
 - 38% increase in last 5 years
 - Increase due to overdose deaths
- DUI and seized drugs had decreased cases (fewer investigations)
 - Back up now
- DNA section had 12% increase in cases
 - 816 CODIS hits



Total Florida Deaths 2013-2020

TOTAL Florida Deaths

