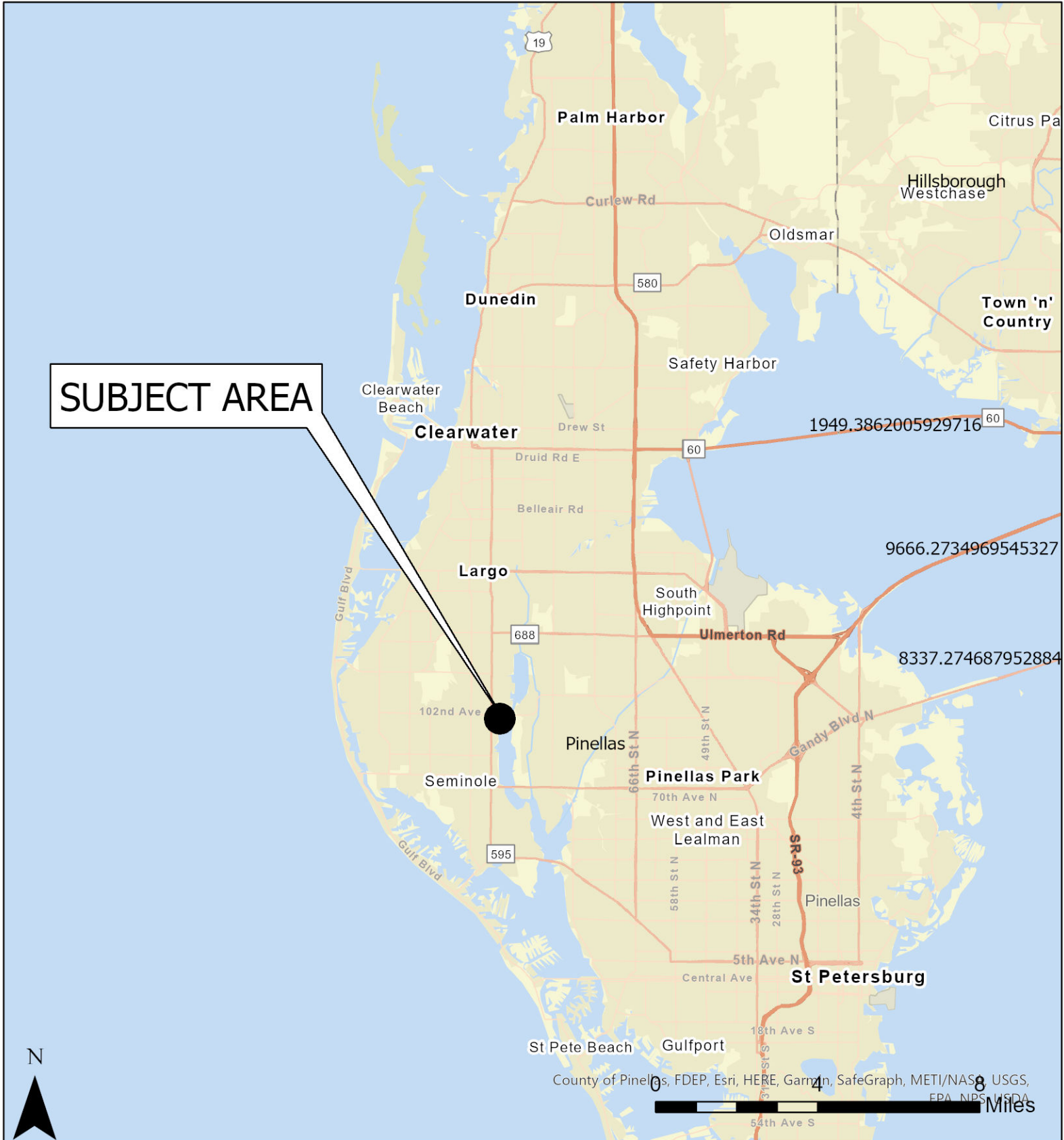


Case CW22-21

Map 1: Location Map



JURISDICTION: Pinellas County

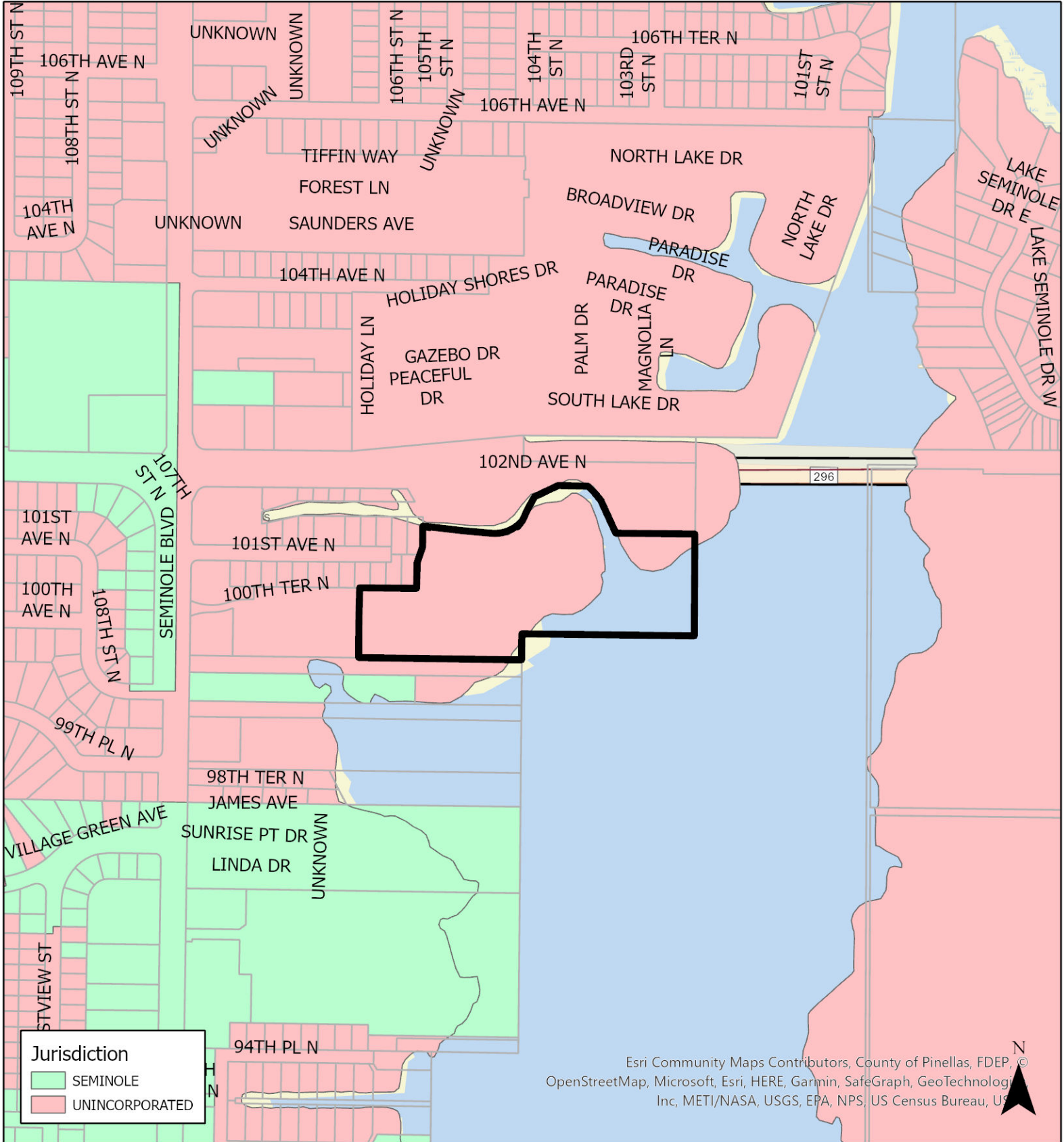
FROM: Office and Preservation

AREA: 13.1 acres

TO: Employment and Preservation

Case CW22-21

Map 2: Jurisdictional Map



JURISDICTION: Pinellas County FROM: Office and Preservation

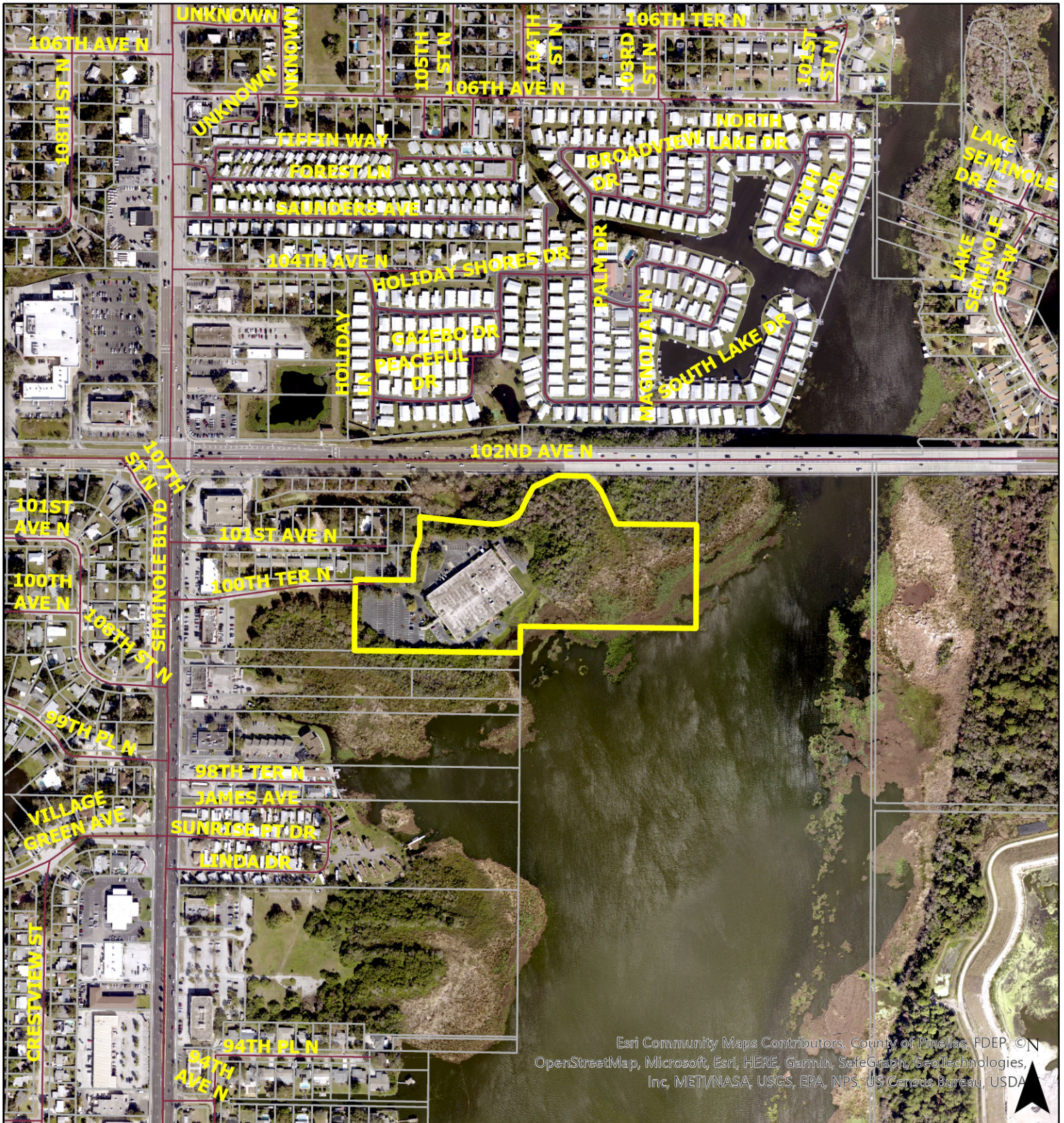
AREA: 13.1 acres

TO: Employment and Preservation



Case CW22-21

Map 3: Aerial Map



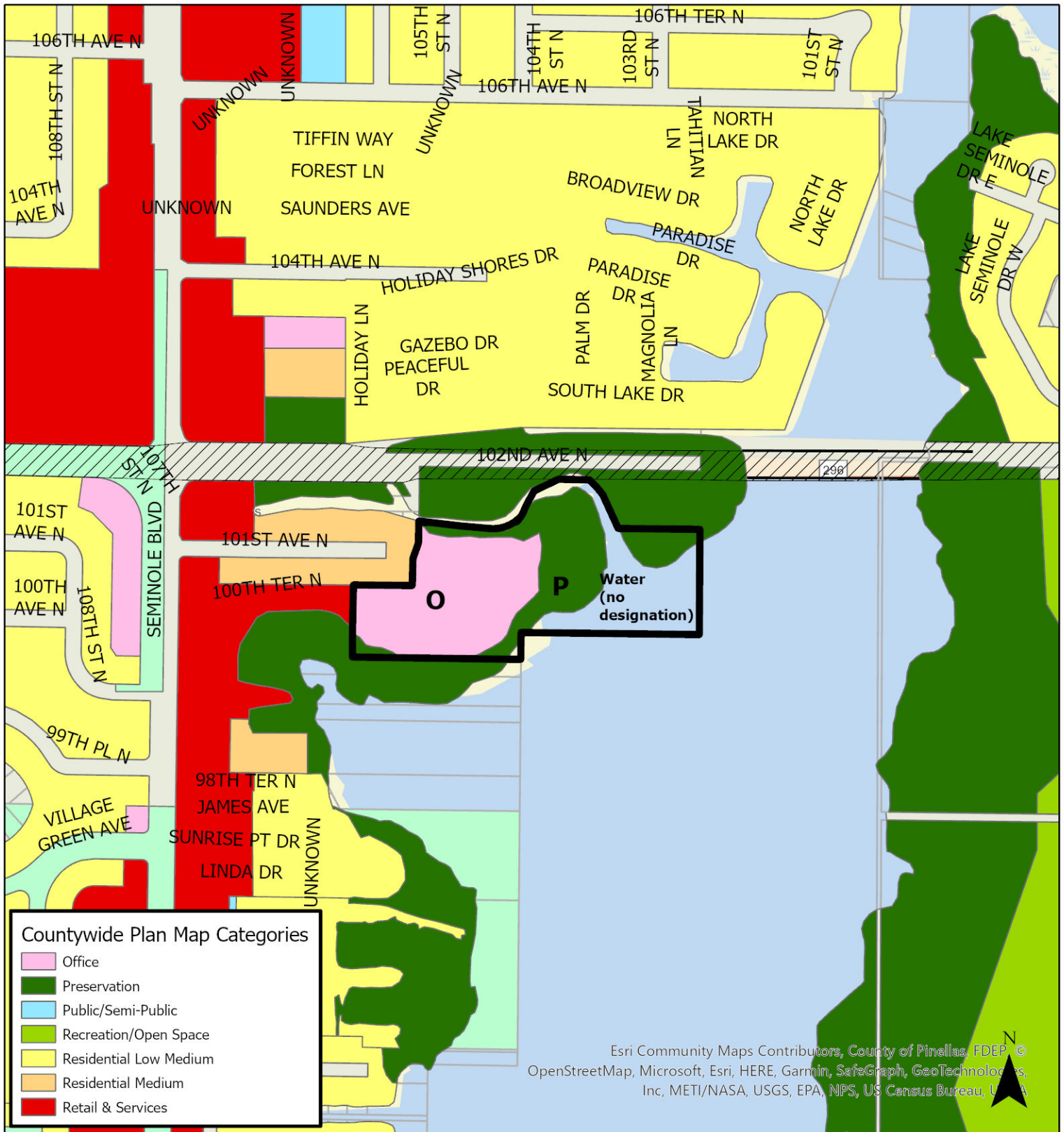
Esri Community Maps Contributors, County of Pinellas, FDEP, © OpenStreetMap, Microsoft, Esri, HERE, Garmin, SafeGraph, GeoTechnologies Inc, METI/NASA, USGS, EPA, NPS, US Census Bureau, USDA



JURISDICTION: Pinellas County **FROM:** Office and Preservation 0 200 400 800 Feet
AREA: 13.1 acres **TO:** Employment and Preservation

Case CW22-21

Map 4: Current Countywide Plan Map



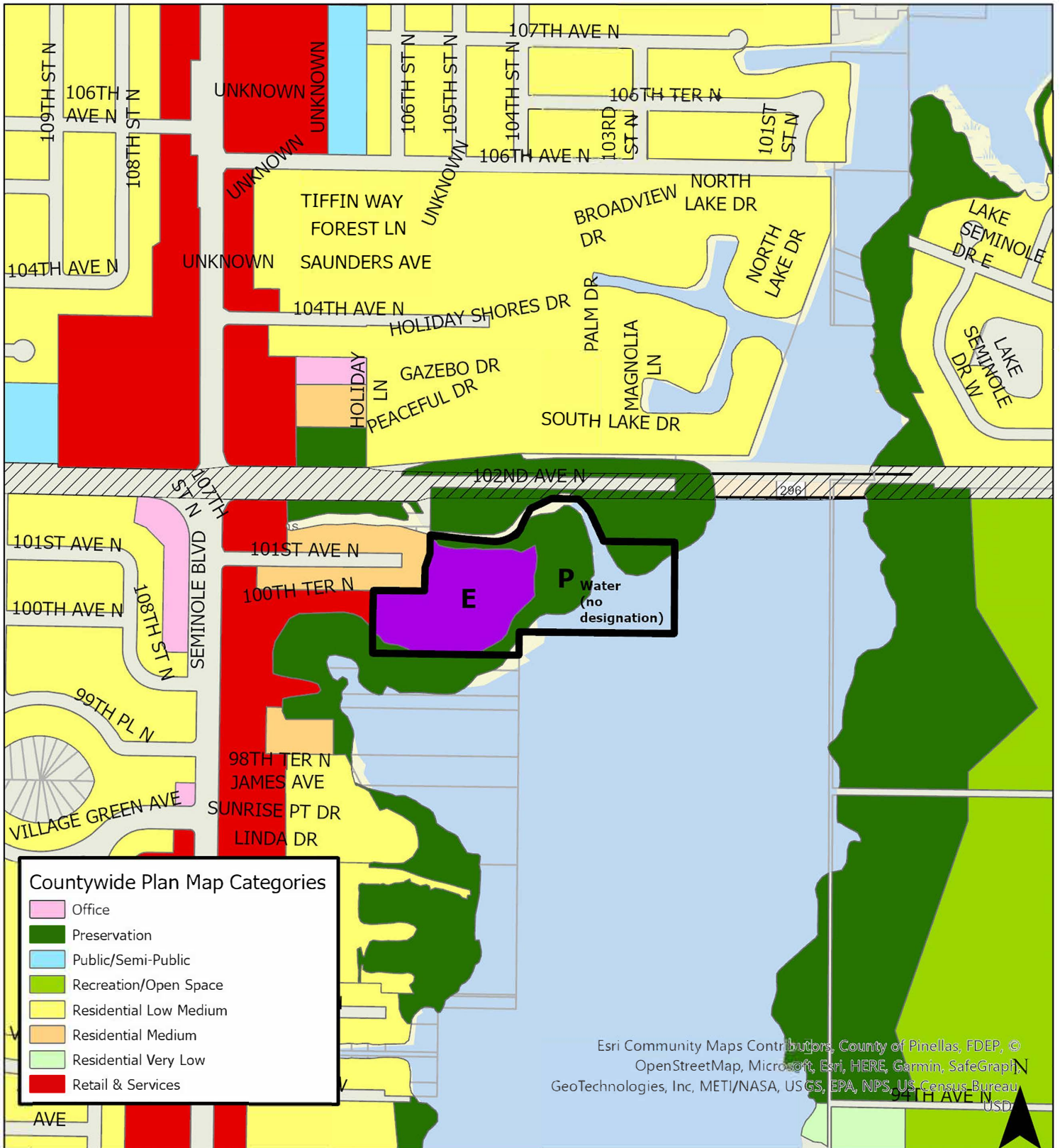
Esri Community Maps Contributors, County of Pinellas, FDEP ©
 OpenStreetMap, Microsoft, Esri, HERE, Garmin, SafeGraph, GeoTechnologies,
 Inc, METI/NASA, USGS, EPA, NPS, US Census Bureau, U.S.A

JURISDICTION: Pinellas County **FROM: Office and Preservation** 0 200 500 900 Feet

AREA: 13.1 acres **TO: Employment and Preservation**

Case CW22-21

Map 5: Proposed Countywide Plan Map



JURISDICTION: Pinellas County

FROM: Office and Preservation

AREA: 13.1 acres

TO: Employment and Preservation



