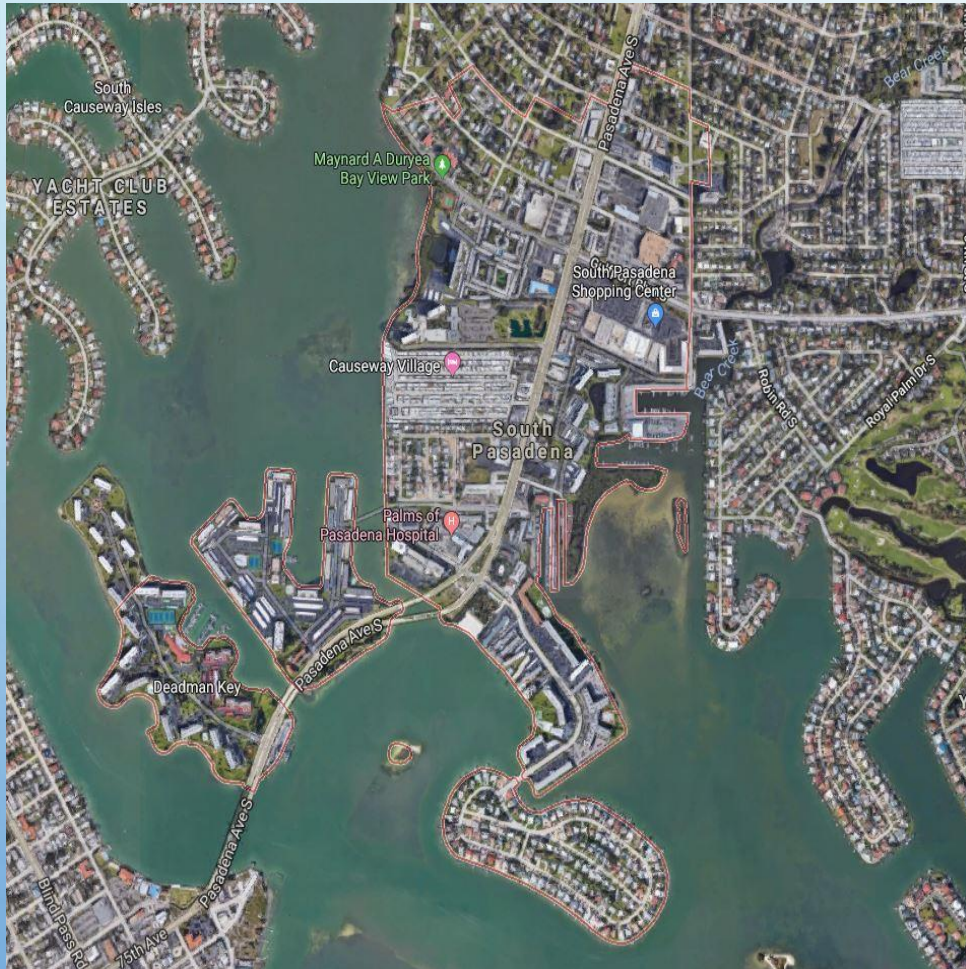


FALL PREVENTION PARTNERSHIP



THE CITY OF SOUTH PASADENA



CALL VOLUME

2016 DISPATCH INCIDENTS BY FIRE DEPARTMENT				2017 DISPATCH INCIDENTS BY FIRE DEPARTMENT			
AGENCY	FIRE	MEDICAL	TOTAL	AGENCY	FIRE	MEDICAL	TOTAL
CLEARWATER	3911	25408	29319	CLEARWATER	4218	26191	30409
AIRPORT	80	515	595	AIRPORT	87	470	557
DUNEDIN	1271	7161	8432	DUNEDIN	1290	7327	8617
EAST LAKE	610	2742	3352	EAST LAKE	608	2879	3487
GULFPORT	436	3203	3639	GULFPORT	433	2637	3070
LARGO	3108	25588	28696	LARGO	3311	26247	29558
LEALMAN	1437	12317	13754	LEALMAN	1445	11675	13120
MADEIRA BEACH	426	1300	1726	MADEIRA BEACH	464	1326	1790
OLDSMAR	312	1589	1901	OLDSMAR	367	1709	2076
PALM HARBOR	1210	7822	9032	PALM HARBOR	1370	8249	9619
PINELLAS PARK	2005	14033	16038	PINELLAS PARK	2245	14608	16853
PINELLAS SUNCOAST	706	2948	3654	PINELLAS SUNCOAST	709	3019	3728
SAFETY HARBOR	815	3607	4422	SAFETY HARBOR	914	3681	4595
SEMINOLE	1746	10618	12364	SEMINOLE	2018	10769	12787
SOUTH PASADENA	470	2927	3397	SOUTH PASADENA	464	3096	3560
ST PETE BEACH	611	2498	3109	ST PETE BEACH	589	2375	2964
ST PETERSBURG	7374	54371	61745	ST PETERSBURG	7800	56159	63959
TARPON SPRINGS	808	4421	5229	TARPON SPRINGS	831	4526	5357
TREASURE ISLAND	424	1452	1876	TREASURE ISLAND	384	1584	1968



WHY FALL PREVENTION?



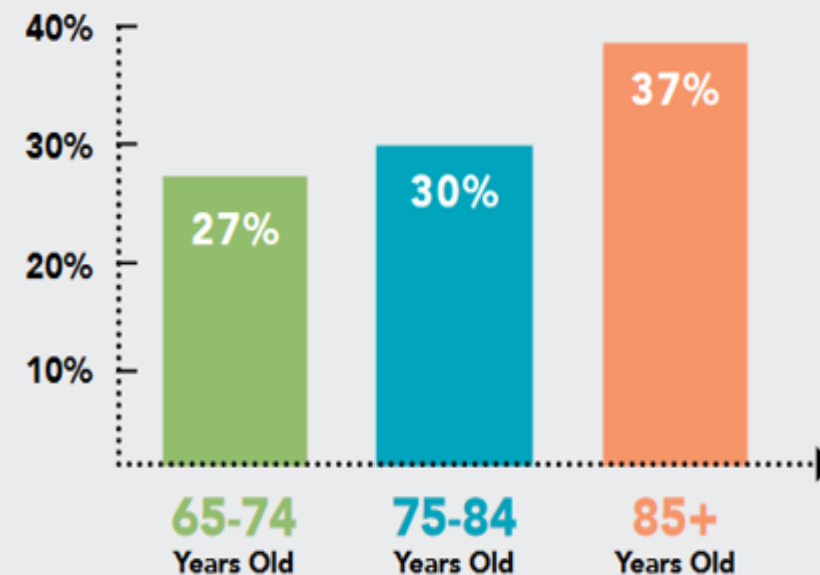
1 in 4 older adults reported a fall.



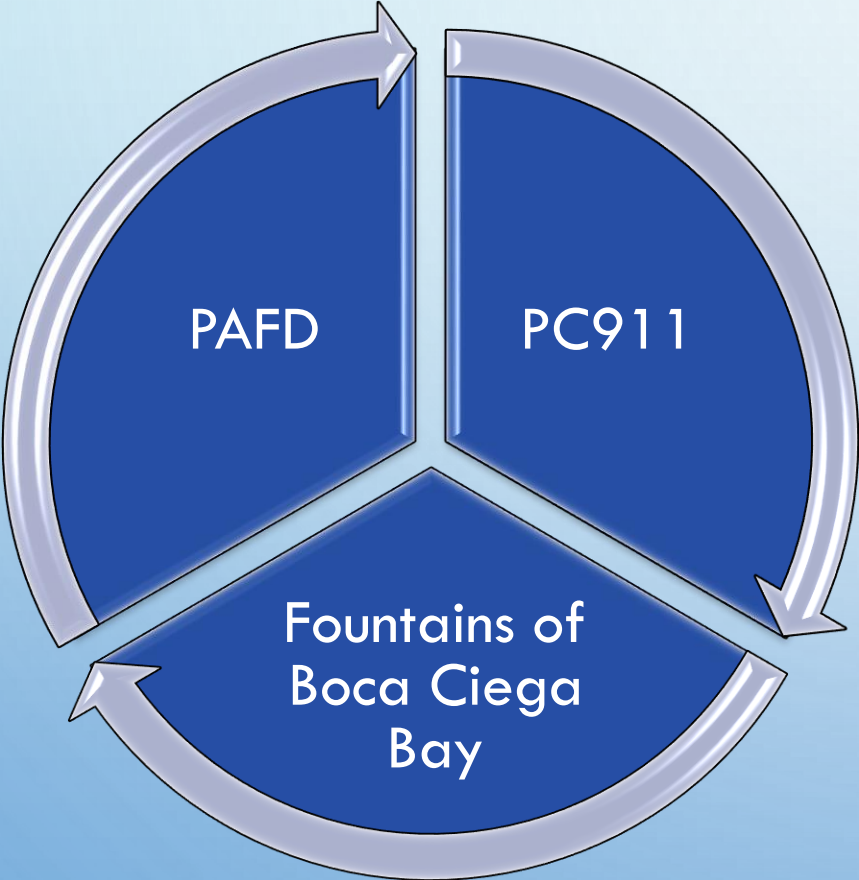
Even though falls are common, most adults who fall don't tell their doctor.

Falls Increase with Age:

Percent of older adults who reported a fall:



COLLABORATION



= “PREVENT THE FALL -
PREVENT THE CALL”

“PREVENT THE FALL – PREVENT THE CALL”

SUZANNE BURTZLAFF, EXECUTIVE DIRECTOR

12 YEARS AT THE FOUNTAINS

THE FOUNTAINS

1255 PASADENA AVENUE SOUTH, SOUTH PASADENA, FL 33707

INDEPENDENT LIVING – 335 APARTMENTS

ASSISTED LIVING & MEMORY CARE – 170 APARTMENTS

SKILLED NURSING / REHAB – 109 BEDS

TOTAL – 614 APARTMENTS/BEDS

TOTAL OCCUPANCY TODAY – 589 RESIDENTS

“WE’RE #1”?

LOCATION	BUSINESS	2017	2016	2015	2014
1255 PASADENA AV S	FOUNTAINS AT BOCA CIEGA BAY	962	920	871	886
1150 8 AV SW	BROOKDALE PINECREST PLACE	652	600	517	460
14400 49 ST N	PINELLAS COUNTY JAIL FACILITY	642	550	442	613
14840 49 ST N	PINELLAS SAFE HARBOR	583	585	664	636
9381 US HWY 19 N	BAYSIDE TERRACE	478	360	302	300

OUR GOAL? “WE’RE #2!

FALL PROTOCOL / INDEPENDENT LIVING

INCIDENT OCCURS

SECURITY GUARD / INDEPENDENT LIVING NURSE

ASSIST RESIDENT OR CALL 911

INCIDENT REPORT CREATED

HOW DO WE GET THERE?

INTERVENTIONS

DISCUSS AT DAILY MANAGEMENT STAND UP MEETING

ALL INCIDENT REPORTS REVIEWED

INCREASE LEVEL OF CARE? PRIVATE DUTY? HOME HEALTH?

NEED MEDICATION MANAGEMENT?

NEED A MEDIC ALERT NECKLACE?

LIST OF PRODUCTS (GRAB BARS, NIGHTLIGHTS, ETC)

LAST DOCTOR APPOINTMENT?

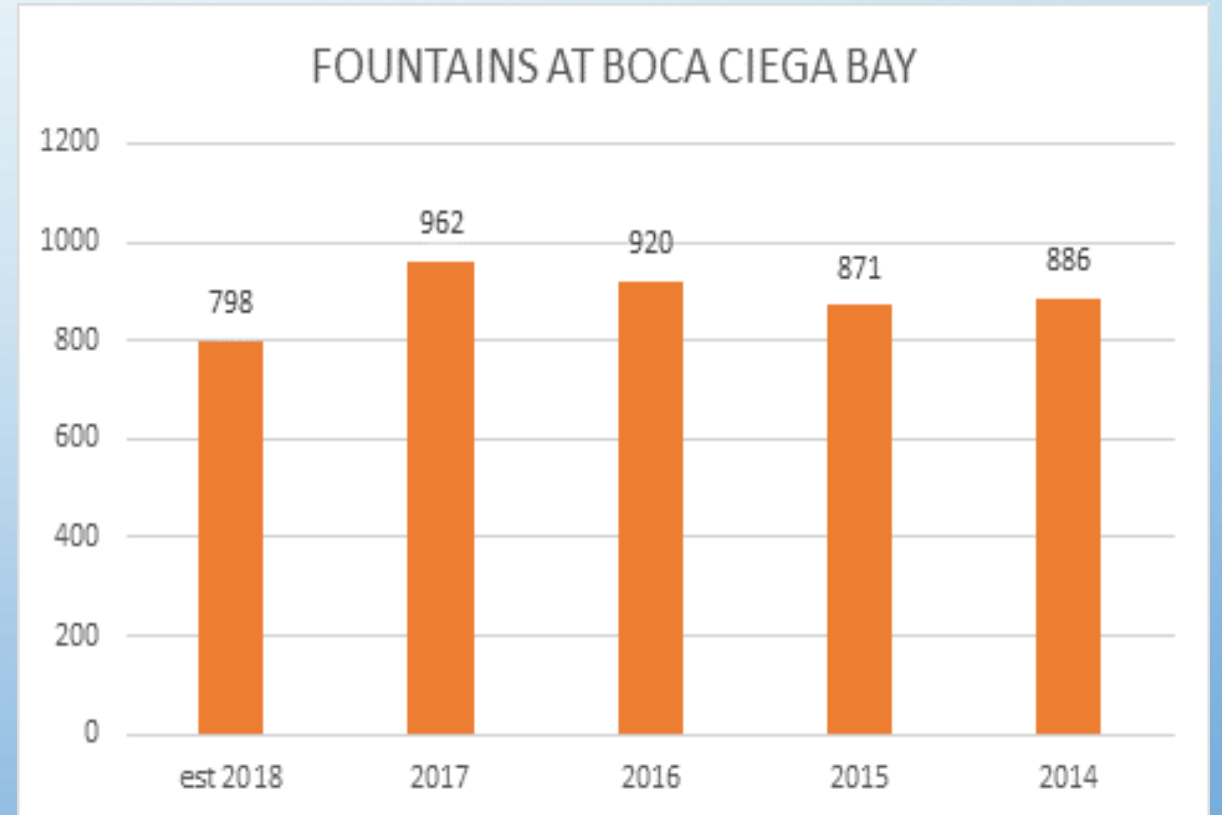
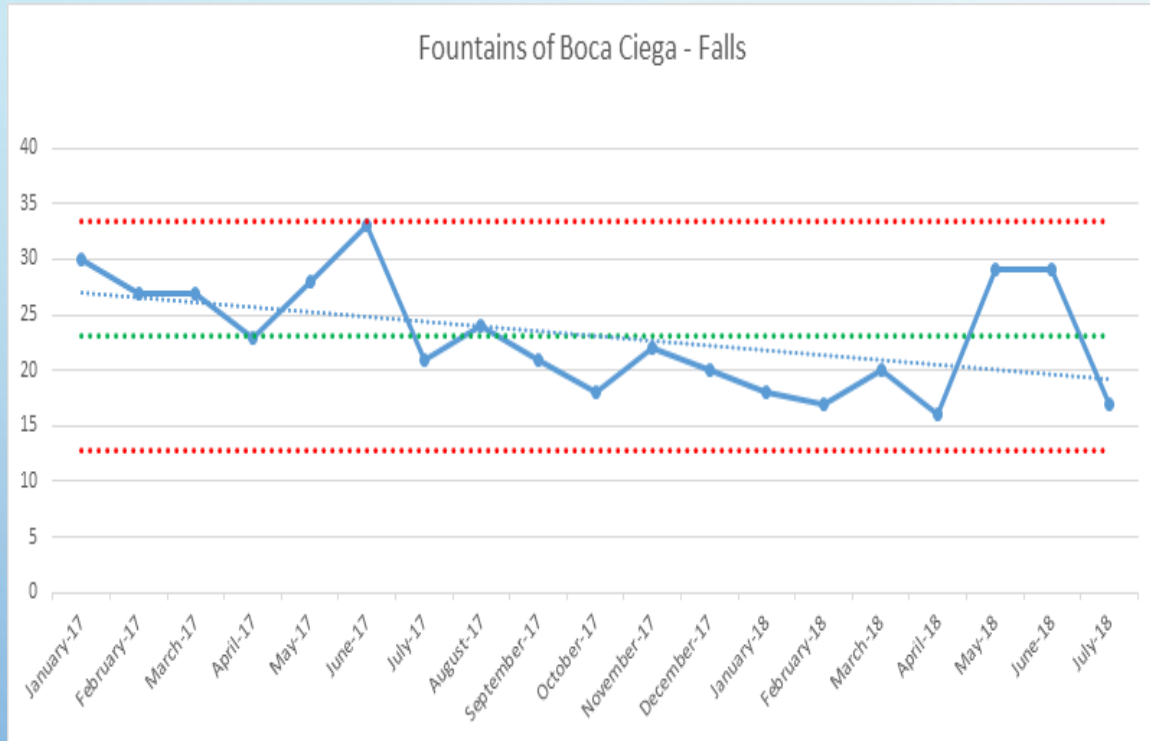
DETERMINE FREQUENCY – WHERE? WHEN? WHY?

APARTMENT INSPECTIONS

LEVEL OF CARE MEETINGS WEEKLY

“SHOUT OUT PROGRAM” WITH EMPLOYEES

IS IT WORKING?



WORKING TOWARDS #2

LOCATION	BUSINESS	% Change from 2017	Projected 2018	2017
1255 PASADENA AV S	FOUNTAINS AT BOCA CIEGA BAY	-17.10%	798	962
14840 49 ST N	PINELLAS SAFE HARBOR	26.04%	735	583
14400 49 ST N	PINELLAS COUNTY JAIL FACILITY	4.94%	674	642
1150 8 AV SW	BROOKDALE PINECREST PLACE	-5.30%	617	652
11254 58 ST N-PP	PEMHS PERSONAL ENRICHMENT	19.29%	550	461