

Surrounding Counties

ZON-23-06

Location Map

Zoning
From: R-4, One, Two & Three Family Residential
To: E-2, Employment-2



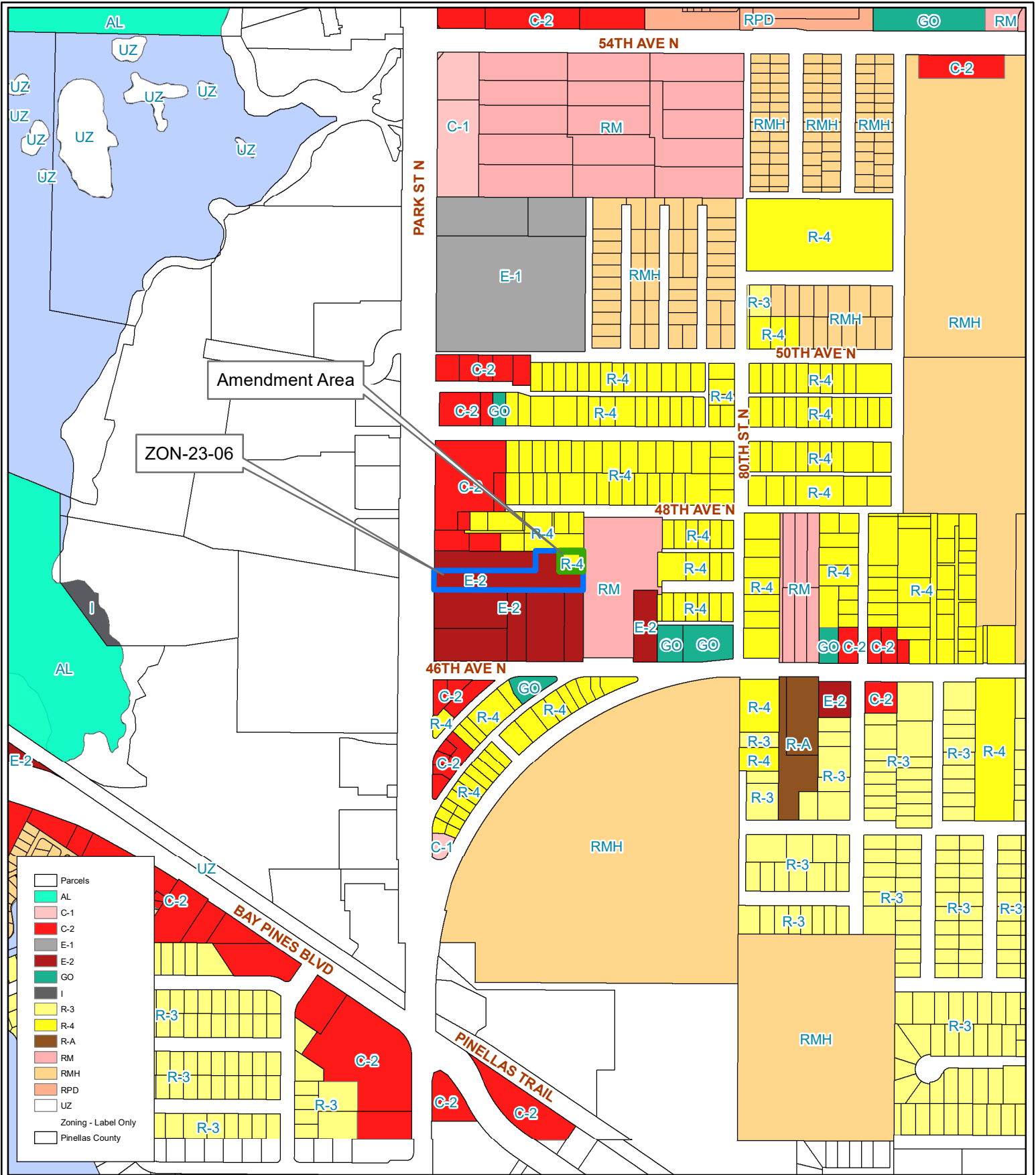
01311500001303200

Prepared by: Housing & Community Development Department



Date: 7/7/2023

1 inch = 4.5 miles



- Parcels
- AL
- C-1
- C-2
- E-1
- E-2
- GO
- I
- R-3
- R-4
- R-A
- RM
- RMH
- RPD
- UZ
- Zoning - Label Only
- Pinellas County

ZON-23-06
Current Zoning Map

Zoning
From: R-4, One, Two & Three Family Residential
To: E-2, Employment-2



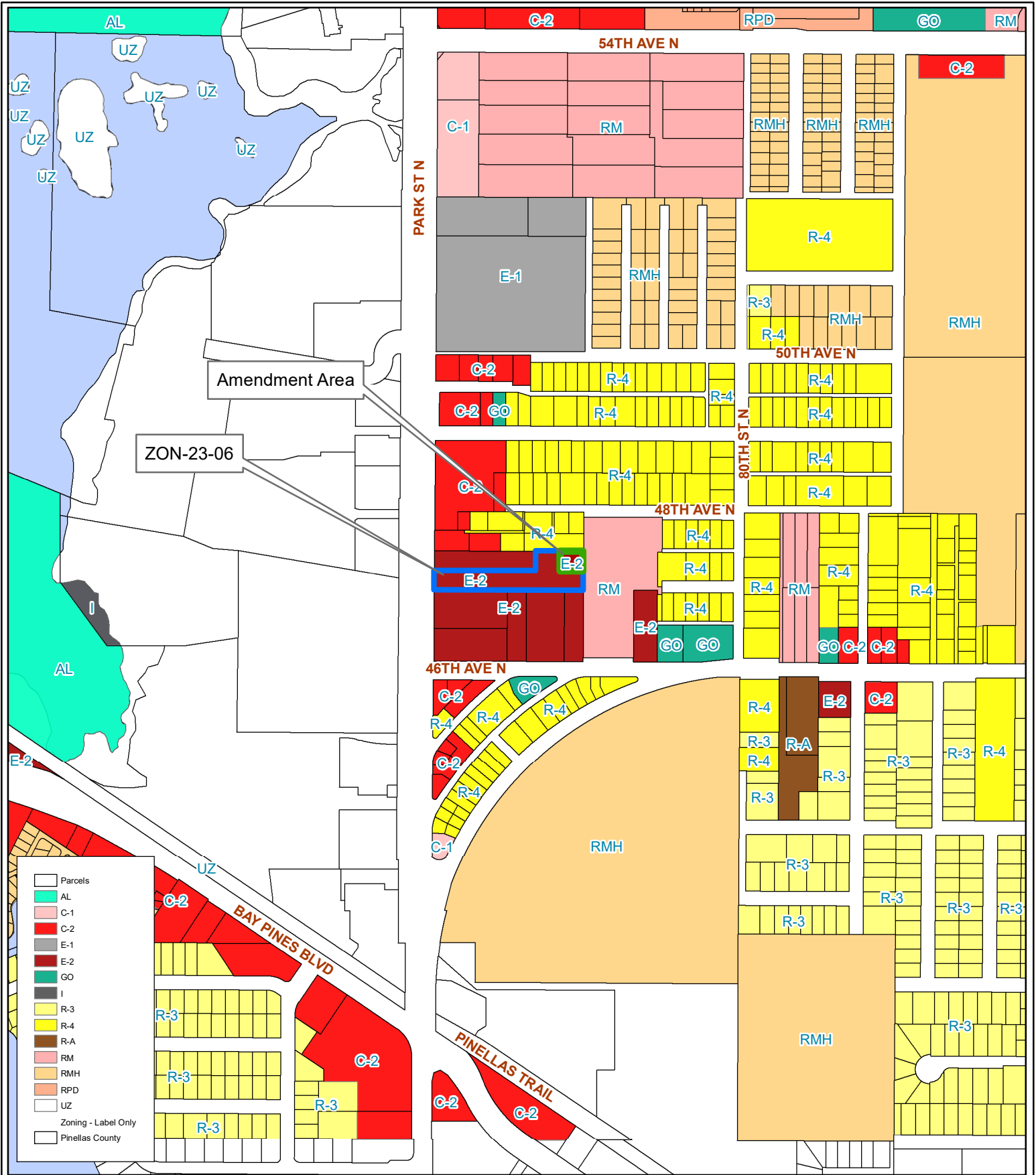
01311500001303200

Prepared by: Housing & Community Development Department



Date: 7/7/2023

1 inch = 0.1 miles



- Parcels
- AL
- C-1
- C-2
- E-1
- E-2
- GO
- I
- R-3
- R-4
- R-A
- RM
- RMH
- RPD
- UZ
- Zoning - Label Only
- Pinellas County

ZON-23-06
Proposed Zoning Map

Zoning
From: R-4, One, Two & Three Family Residential
To: E-2, Employment-2



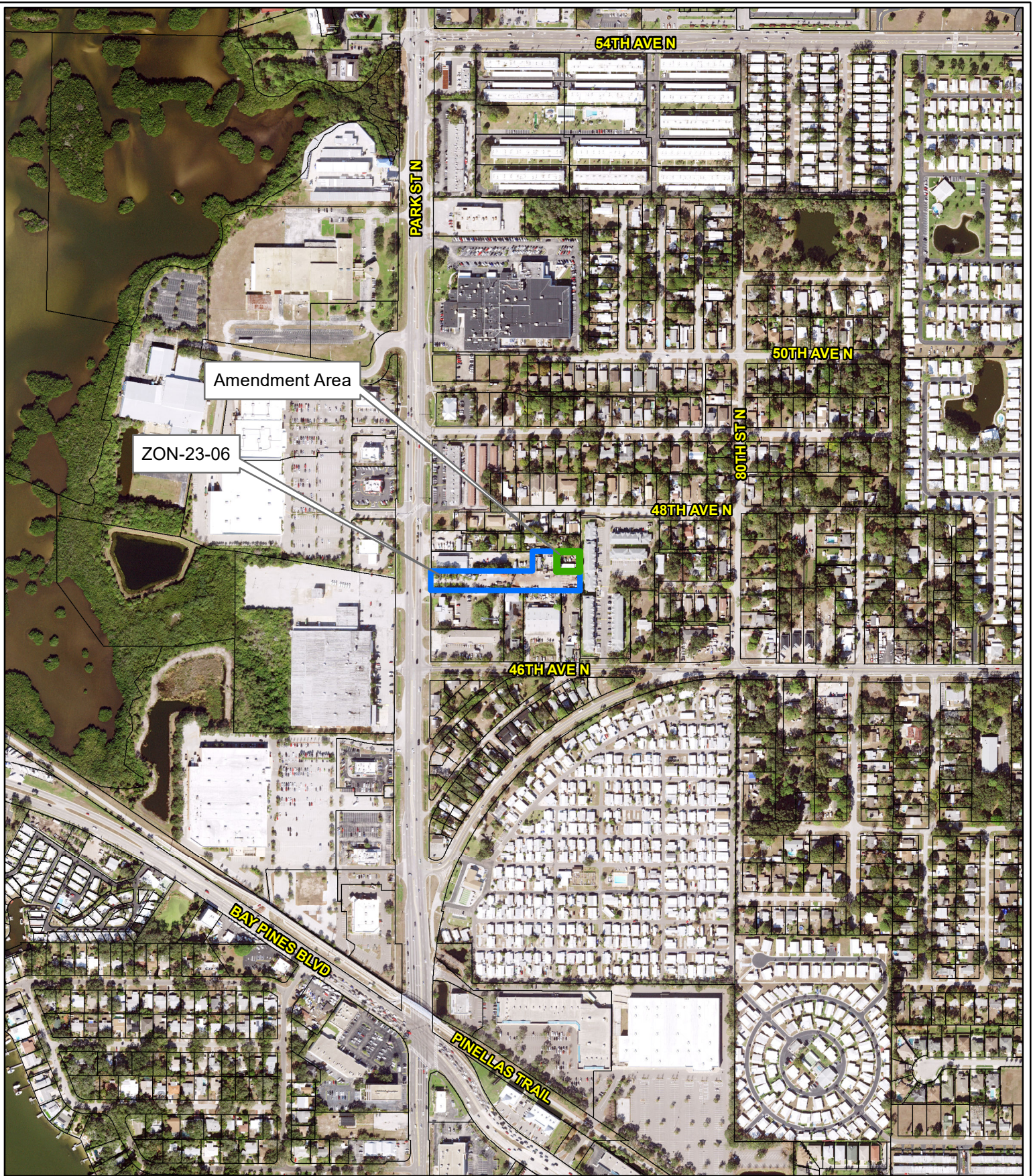
013115000001303200

Prepared by: Housing & Community Development Department



Date: 7/7/2023

1 inch = 0.1 miles



ZON-23-06

Aerial Map

From: R-4, One, Two & Three Family Residential

Zoning

To: E-2, Employment-2



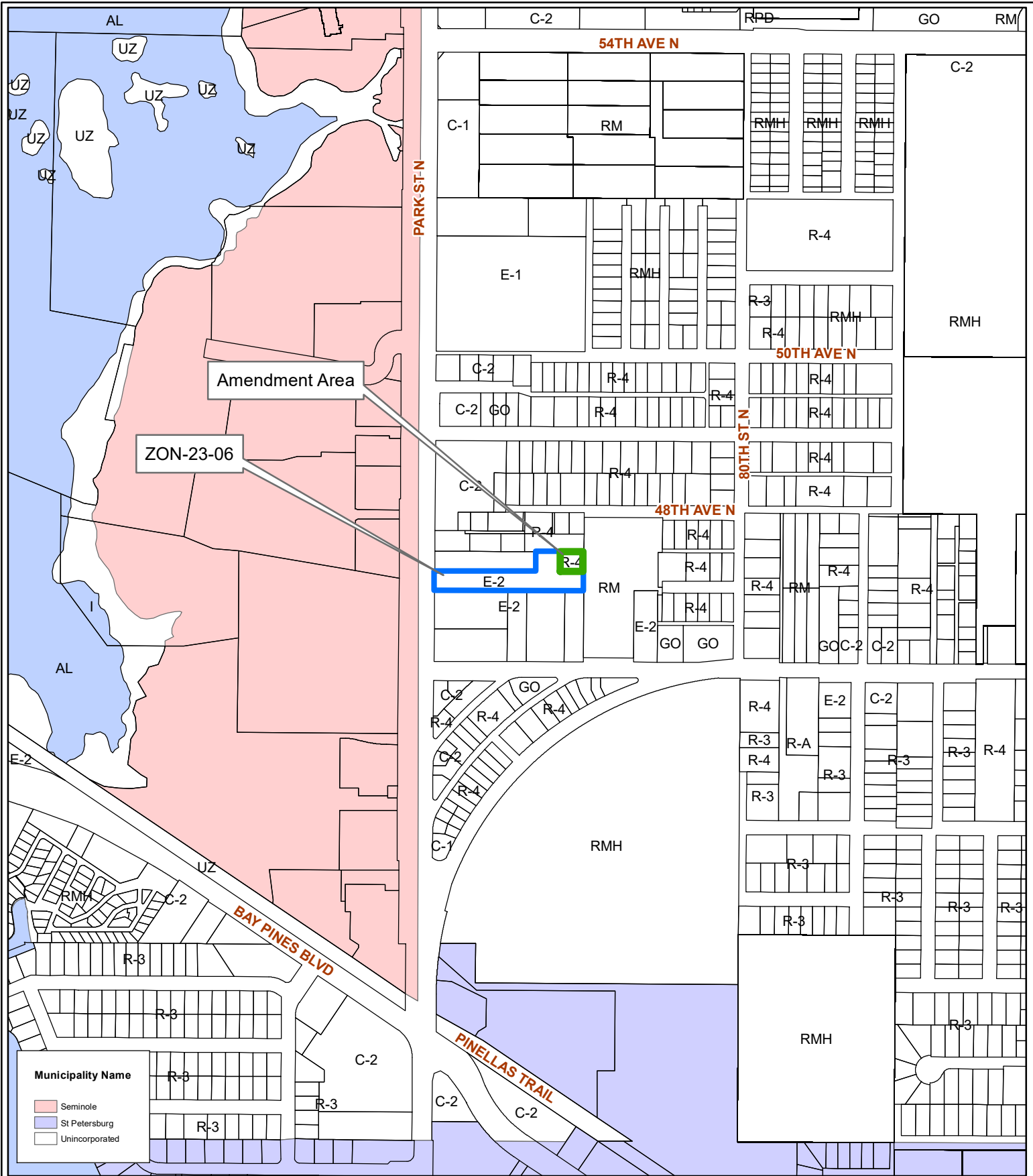
01311500001303200

Prepared by: Housing & Community Development Department



Date: 7/7/2023

1 inch = 0.1 miles



ZON-23-06
Municipal Map

Zoning
From: R-4, One, Two & Three Family Residential
To: E-2, Employment-2



01311500001303200

Prepared by: Housing & Community Development Department



Date: 7/7/2023

1 inch = 0.1 miles