

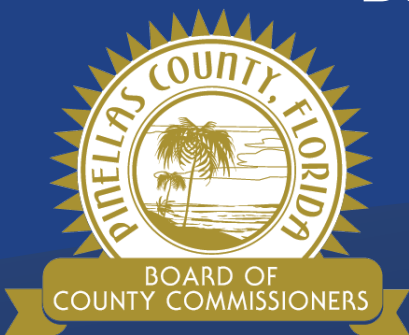
Substantial Damage Assessments & Permitting Update



Building & Development Review Services

Kevin McAndrew

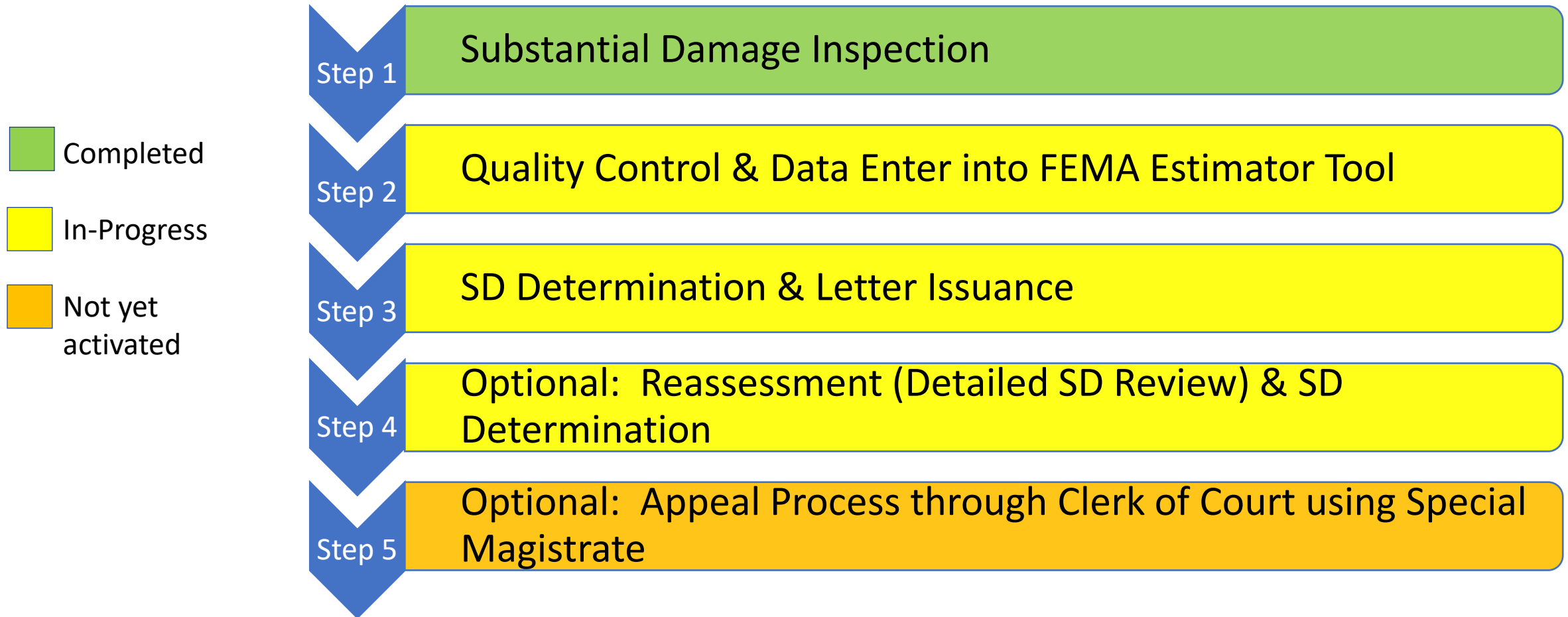
Director



Our Vision: To Be the Standard for Public Service in America

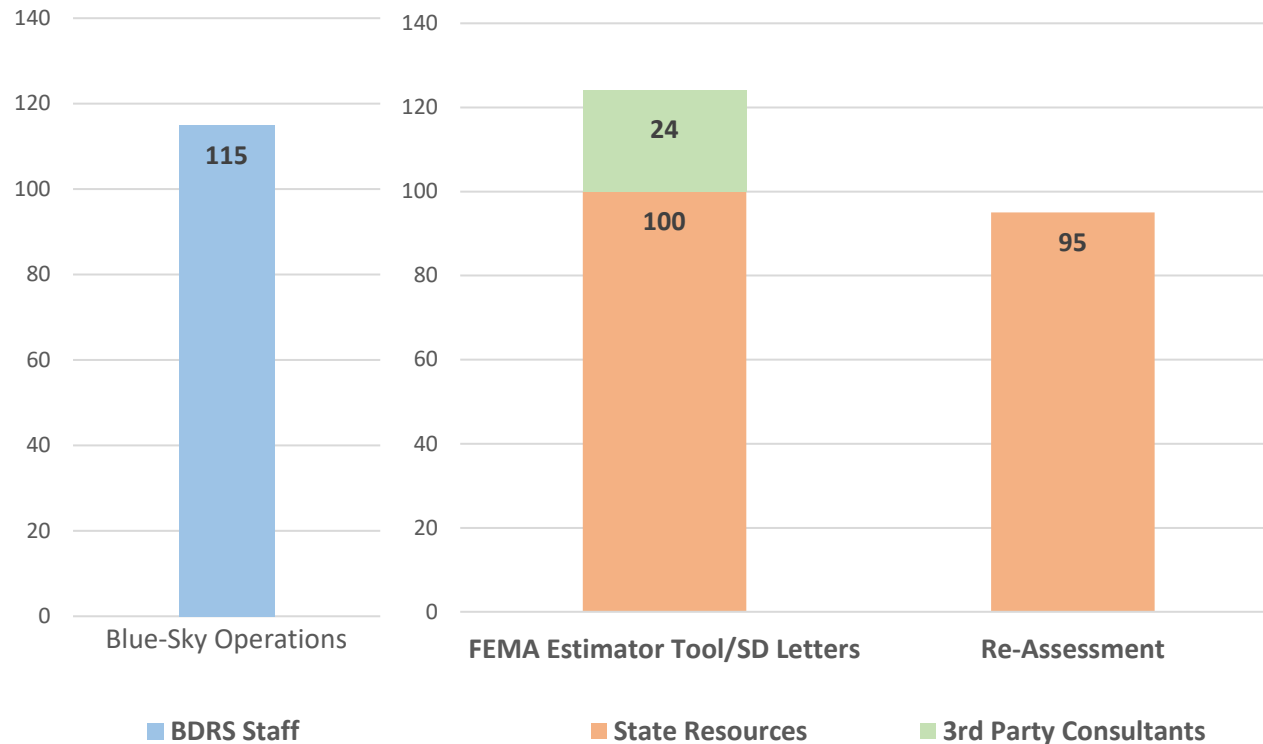


Substantial Damage Process



Staffing Resources

- **Augmenting Staff to support the demand**
- **Coordination of State Resources to support partner municipalities**

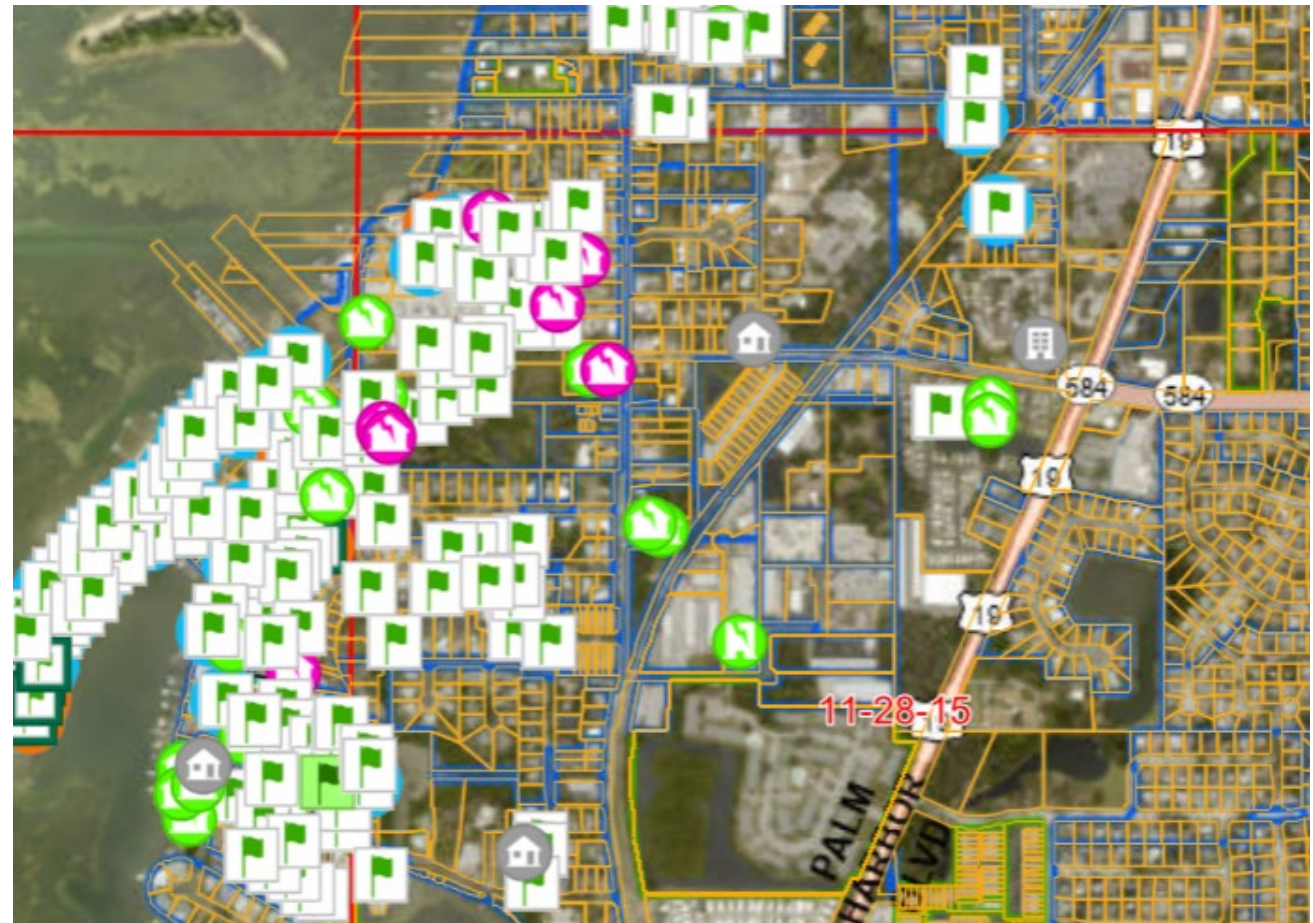


- Belleair Beach
- Belleair Bluffs
- Belleair Shore
- Gulfport
- Indian Rocks Beach
- Indian Shores
- Kenneth City
- Madeira Beach
- North Redington Beach
- Oldsmar
- Redington Beach
- Redington Shores
- Safety Harbor
- St. Pete Beach
- Treasure Island

Substantial Damage Assessments Update

- **1,658 letters mailed** (as of December 12th) Approximately 30% complete
- **366 structures substantially damaged** (homes and non-residential)
- **3,700 +/- letters still to be mailed.**
 - Mailing letters daily for north, mid-county and south county by grid (Section/Township/Range)

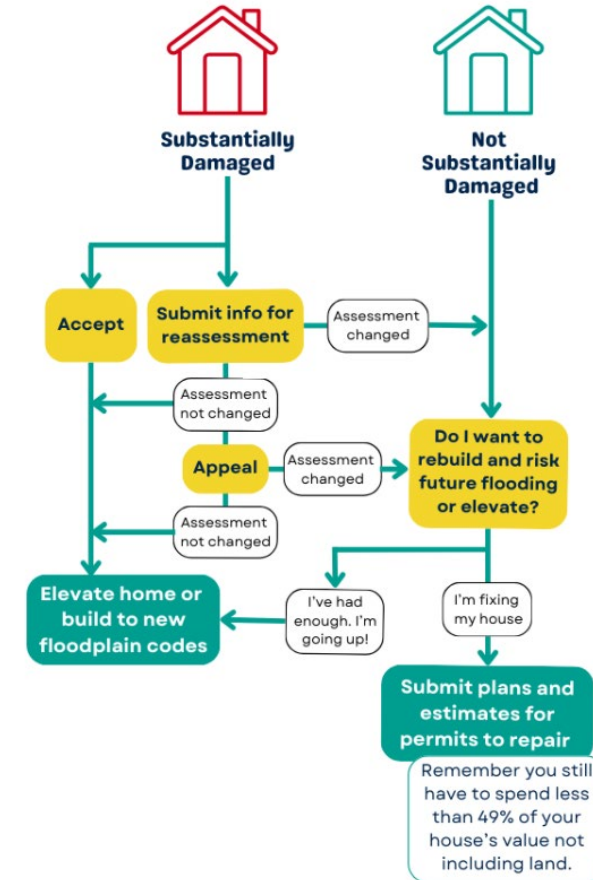
Projected completion by End of Calendar Year



Substantial Damage Determinations

Providing a path forward

- Not Substantially Damaged: Proceed to Permitting
- Substantially Damaged Structures – Accept or Pursue Reassessment
- Appeal Option if assessment not changed



Reassessment Option

Required Forms for Reassessment

If you received a **Substantially Damaged** letter and disagree with the initial assessment, you can request a reassessment. To do so, [please read the steps on this page](#) and complete the following forms.

- [Floodplain Substantial Damage Package – Cost Breakdown](#)
- [Substantial Damage Scope of Work Narrative](#)

[Instructions for submitting a Substantial Damage Reassessment Application in the Pinellas County Access Portal](#)

Detailed Substantial Damage Assessment (SDA)

- **Anticipating a high percentage to pursue**
- **Currently filed: 14**
- **Timing/Staffing Resources**

- **Storm Repair Permits Issued: 1,380**
- **Storm Repair Permits in Review: 144**
- **Blue Sky Permits issued (post Milton): 5,285**

Helene / Milton

Storm-Related Permits Issued

1380

Storm-Related Permits In Review

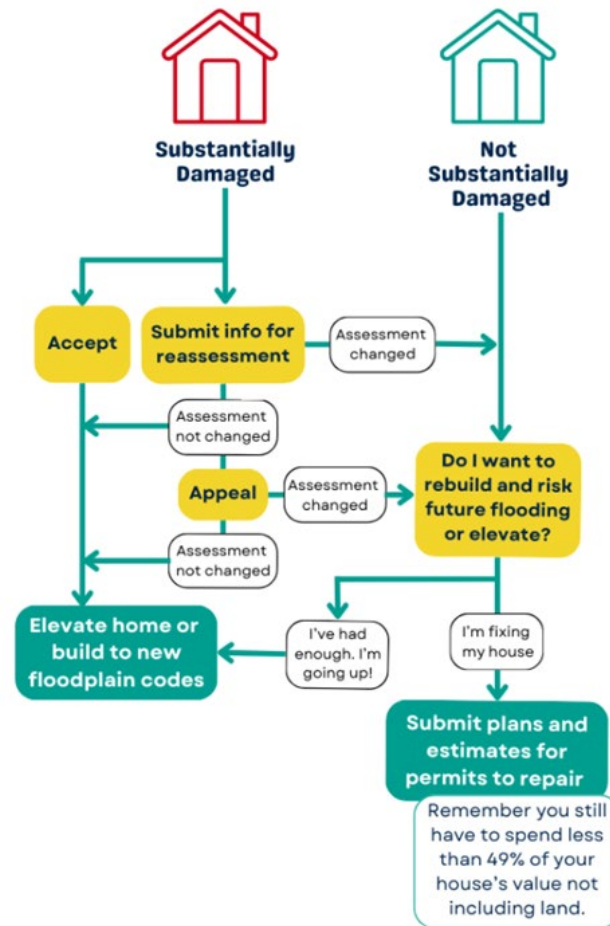
144

Permit Support Hub

- **In-person Permit Support for homeowners and contractors**
- **Support from Permit Intake to Permit Issuance**
- **Over 100 permits issued on the spot**



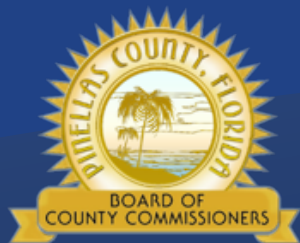
Questions?



Housing & Community Development

Bruce Bussey

Community Development Manager



Our Vision: To Be the Standard for Public Service in America



Hurricane Home Repair Program

- **Grant Funding up to \$30,000**
 - Roofing, Windows, Electrical, HVAC, Mold Remediation, Walls, Flooring
 - Insurance Deductibles
 - Unmet Repair Needs
 - Insurance and FEMA gap



Program Requirements

- **Income Eligibility and Prioritization**
- **Primary Residence**
- **Incorporated and Unincorporated** (This excludes St. Pete, Clearwater, and Largo, as they receive their own direct allocation for their individual programs.)
- **Permitted Work by Licensed Contractors**

Prioritization

- Special Needs
- <50% AMI
- <80% AMI
- <120% AMI

Program Available Beginning Monday 12/23/24

For more information and a link to the application please visit:

[Pinellas.gov/StormRepair](https://pinellas.gov/StormRepair)

Questions?