

**LOCATION MAP**

**CU-16-7-16**

A Conditional Use for the expansion of a utility substation.

35/30/16/03240/000/0300

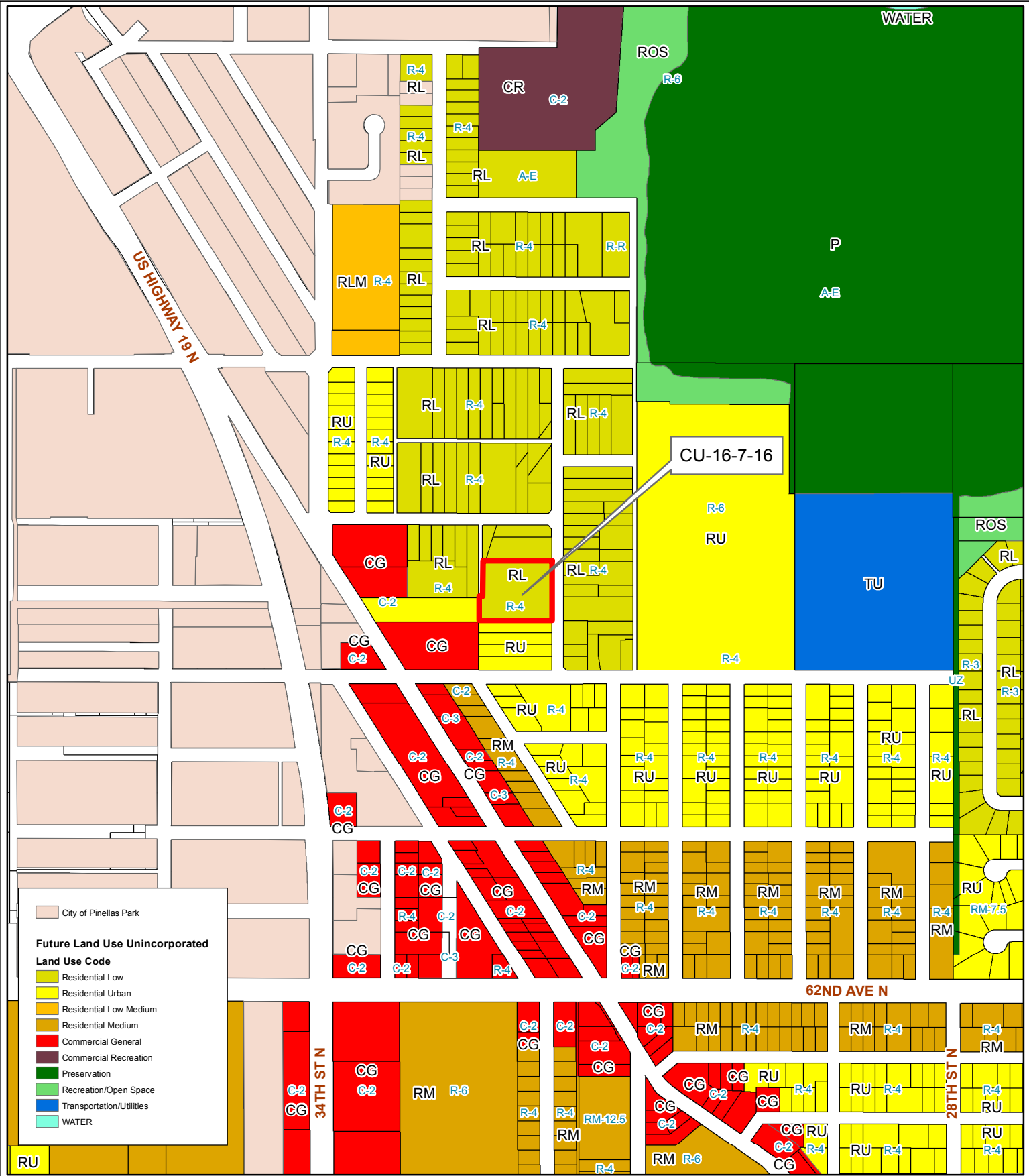
Prepared by: Pinellas County Planning Department



Date: 5/27/2016



1 inch = 4.5 miles



**LAND USE & ZONING**  
**CU-16-7-16**

A Conditional Use for the expansion of a utility substation.

35/30/16/03240/000/0300

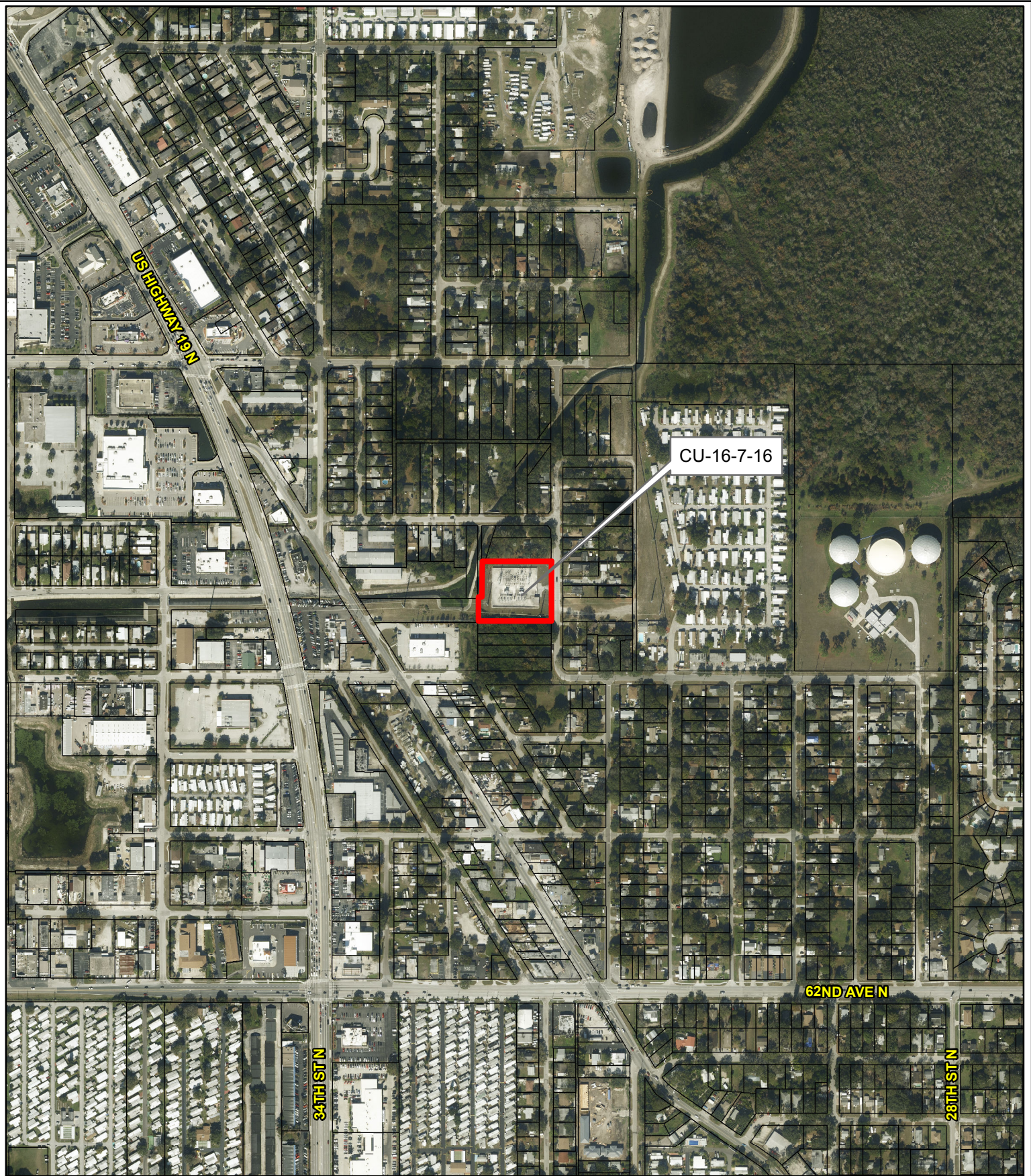
Prepared by: Pinellas County Planning Department



Date: 5/31/2016



1 inch = 0.1 miles



AERIAL

**CU-16-7-16**

A Conditional Use for the expansion of a utility substation.

35/30/16/03240/000/0300

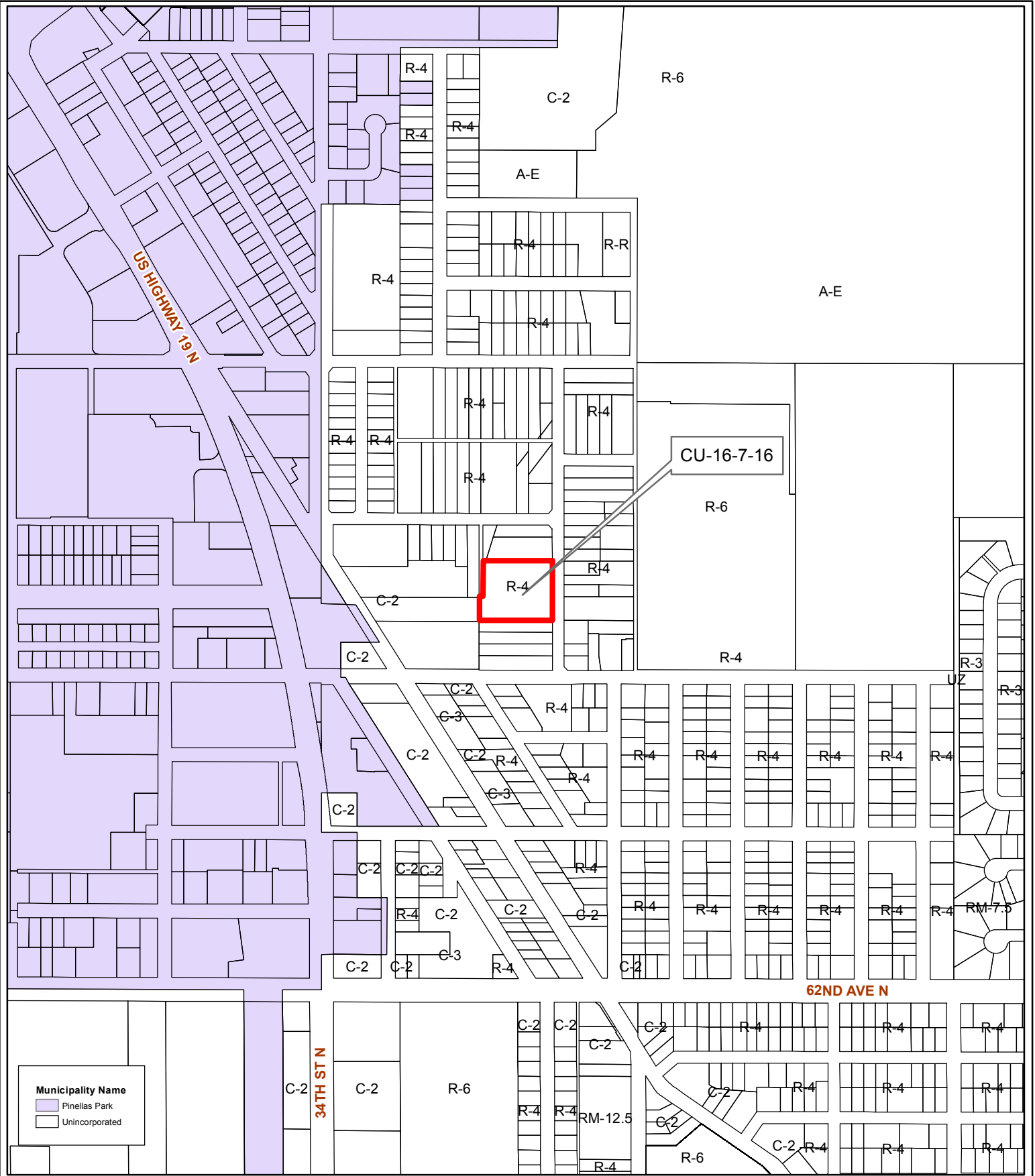
Prepared by: Pinellas County Planning Department



Date: 5/27/2016



1 inch = 0.1 miles



**MUNICIPALITY MAP**  
**CU-16-7-16**

**Conditional Use** A Conditional Use for the expansion of a utility substation



35/30/16/03240/000/0300

Prepared by: Pinellas County Planning Department



Date: 6/7/2016

1 inch = 0.1 miles