

LOCATION MAP



MAP-1

Z/LU-30-11-15

Zoning

From: RPD-0.5-W, Residential Planned Development,
0.5 unit per acre-Wellhead Protection Overlay
To: IL-CO-W, Institutional Limited - Conditional Overlay -
Wellhead Protection Overlay
From: Residential Rural
To: Institutional

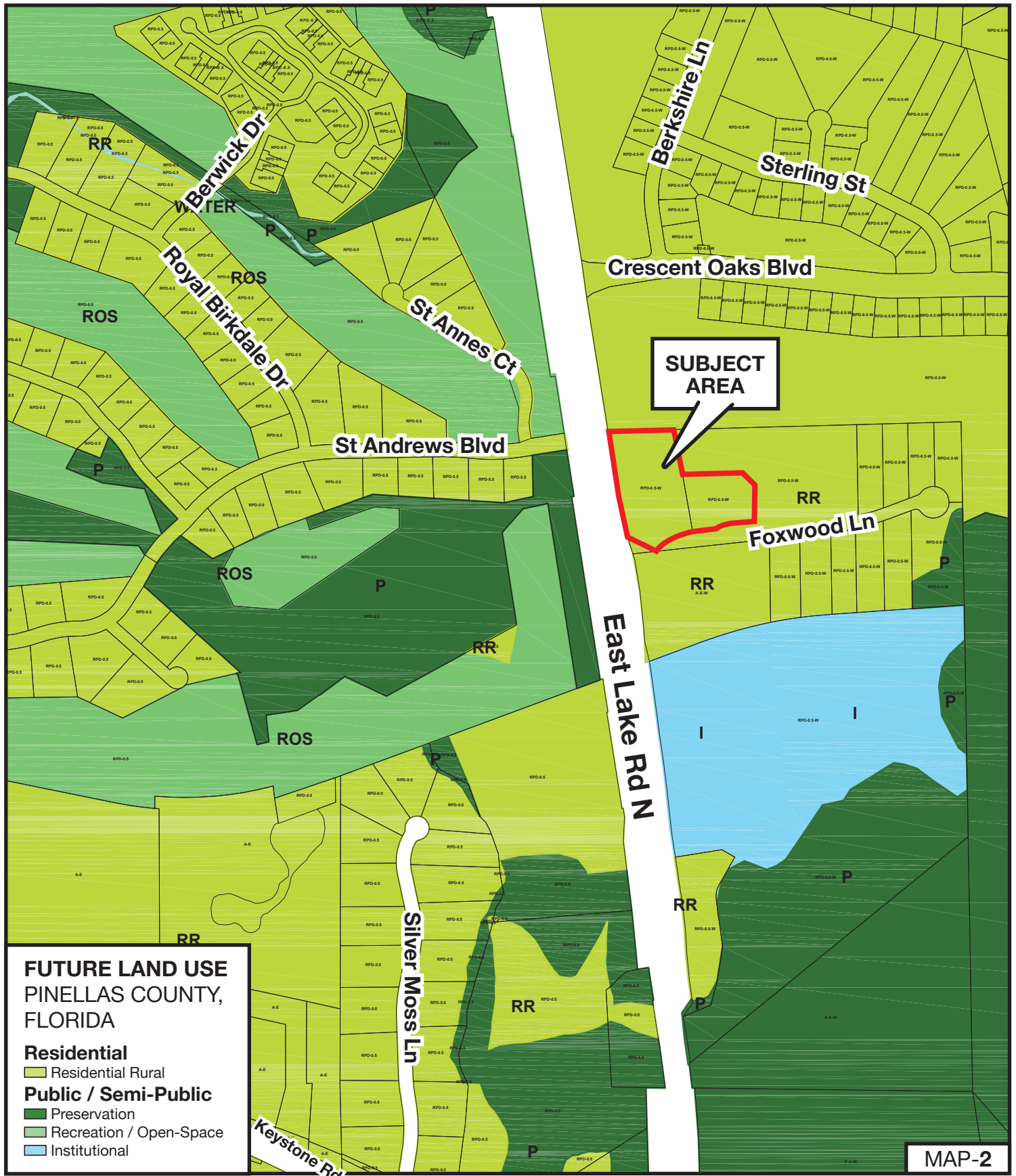
Land Use

Parcel I.D. 10/27/16/29303/000/0010 & 0120

Prepared by: Pinellas County Planning Department September 2015

With a Conditional Overlay restricting the use of the property to an assisted living/memory care facility, limiting the maximum number of beds to 64 and limiting the building to one story at a maximum height of 30 feet.





Z/LU-30-11-15

Zoning

From: RPD-0.5-W, Residential Planned Development, 0.5 unit per acre-Wellhead Protection Overlay
To: IL-CO-W, Institutional Limited - Conditional Overlay - Wellhead Protection Overlay
From: Residential Rural
To: Institutional

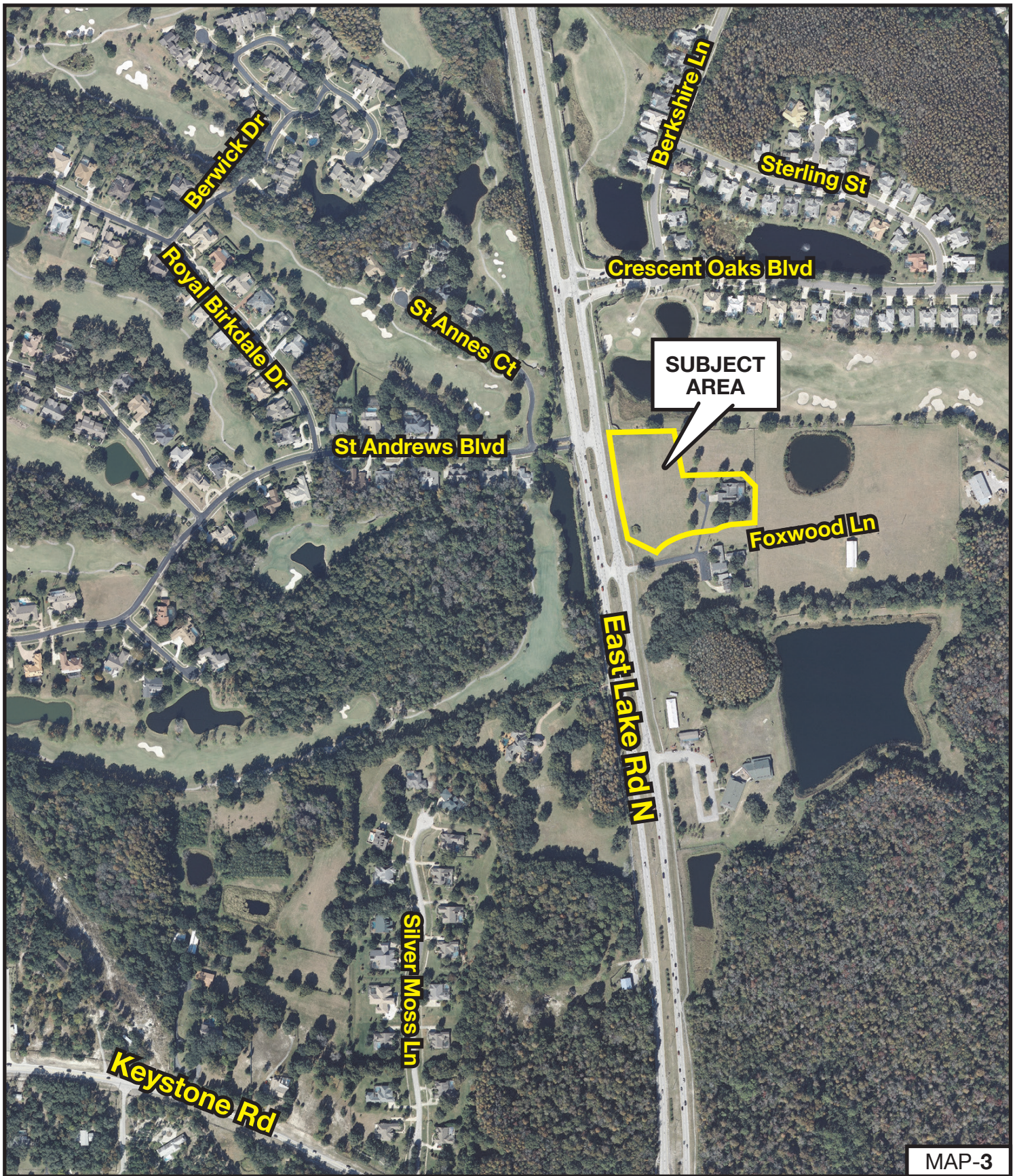
Land Use

Parcel I.D. 10/27/16/29303/000/0010 & 0120

Prepared by: Pinellas County Planning Department September 2015

With a Conditional Overlay restricting the use of the property to an assisted living/memory care facility, limiting the maximum number of beds to 64 and limiting the building to one story at a maximum height of 30 feet.





MAP-3

Z/LU-30-11-15

Zoning

From: RPD-0.5-W, Residential Planned Development, 0.5 unit per acre-Wellhead Protection Overlay
To: IL-CO-W, Institutional Limited - Conditional Overlay - Wellhead Protection Overlay
From: Residential Rural
To: Institutional

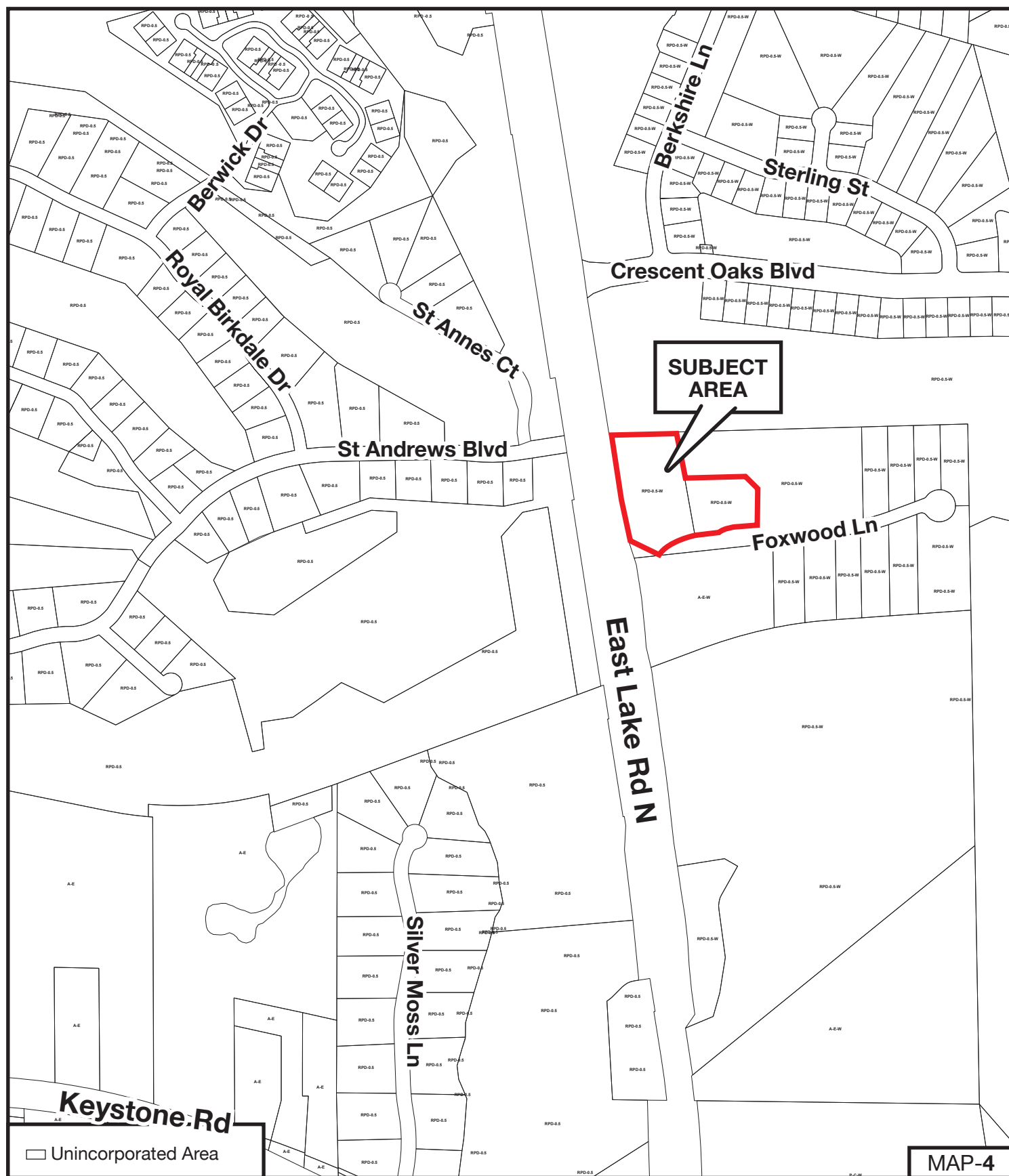
Land Use

Parcel I.D. 10/27/16/29303/000/0010 & 0120

Prepared by: Pinellas County Planning Department September 2015

With a Conditional Overlay restricting the use of the property to an assisted living/memory care facility, limiting the maximum number of beds to 64 and limiting the building to one story at a maximum height of 30 feet.





Z/LU-30-11-15

Zoning

From: RPD-0.5-W, Residential Planned Development,
0.5 unit per acre-Wellhead Protection Overlay
To: IL-CO-W, Institutional Limited - Conditional Overlay -
Wellhead Protection Overlay
From: Residential Rural
To: Institutional

Land Use

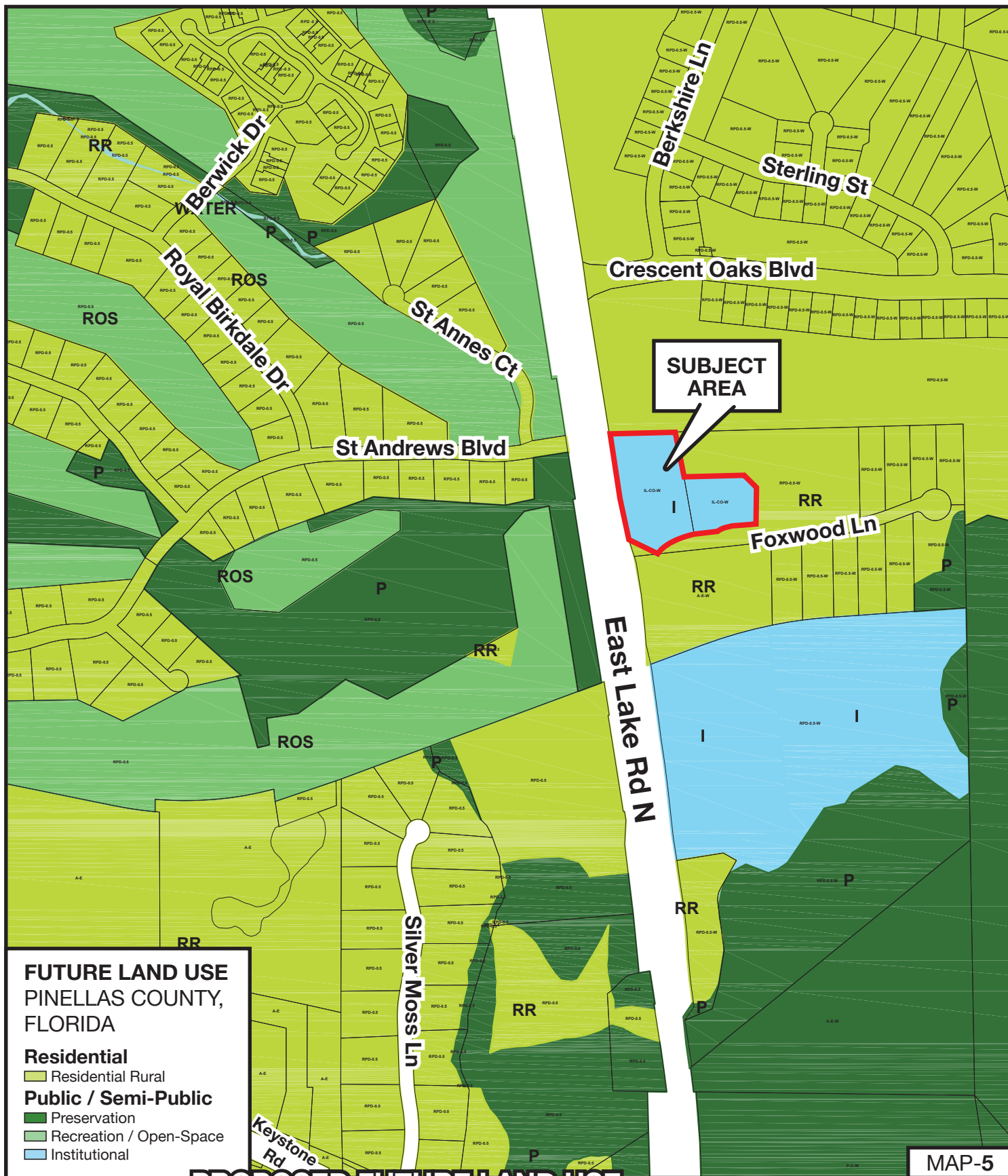
From: Residential Rural
To: Institutional

Parcel I.D. 10/27/16/29303/000/0010 & 0120

Prepared by: Pinellas County Planning Department September 2015

With a Conditional Overlay restricting the use of the property to an assisted living/memory care facility, limiting the maximum number of beds to 64 and limiting the building to one story at a maximum height of 30 feet.





FUTURE LAND USE PINELLAS COUNTY, FLORIDA

Residential

Residential Rural

Public / Semi-Public

Preservation

Recreation / Open-Space

Institutional

PROPOSED FUTURE LAND USE

Z/LU-30-11-15

Zoning

From: RPD-0.5-W, Residential Planned Development, 0.5 unit per acre-Wellhead Protection Overlay
To: IL-CO-W, Institutional Limited - Conditional Overlay - Wellhead Protection Overlay
From: Residential Rural
To: Institutional

Land Use

Parcel I.D. 10/27/16/29303/000/0010 & 0120

Prepared by: Pinellas County Planning Department September 2015

With a Conditional Overlay restricting the use of the property to an assisted living/memory care facility, limiting the maximum number of beds to 64 and limiting the building to one story at a maximum height of 30 feet.



MAP-5