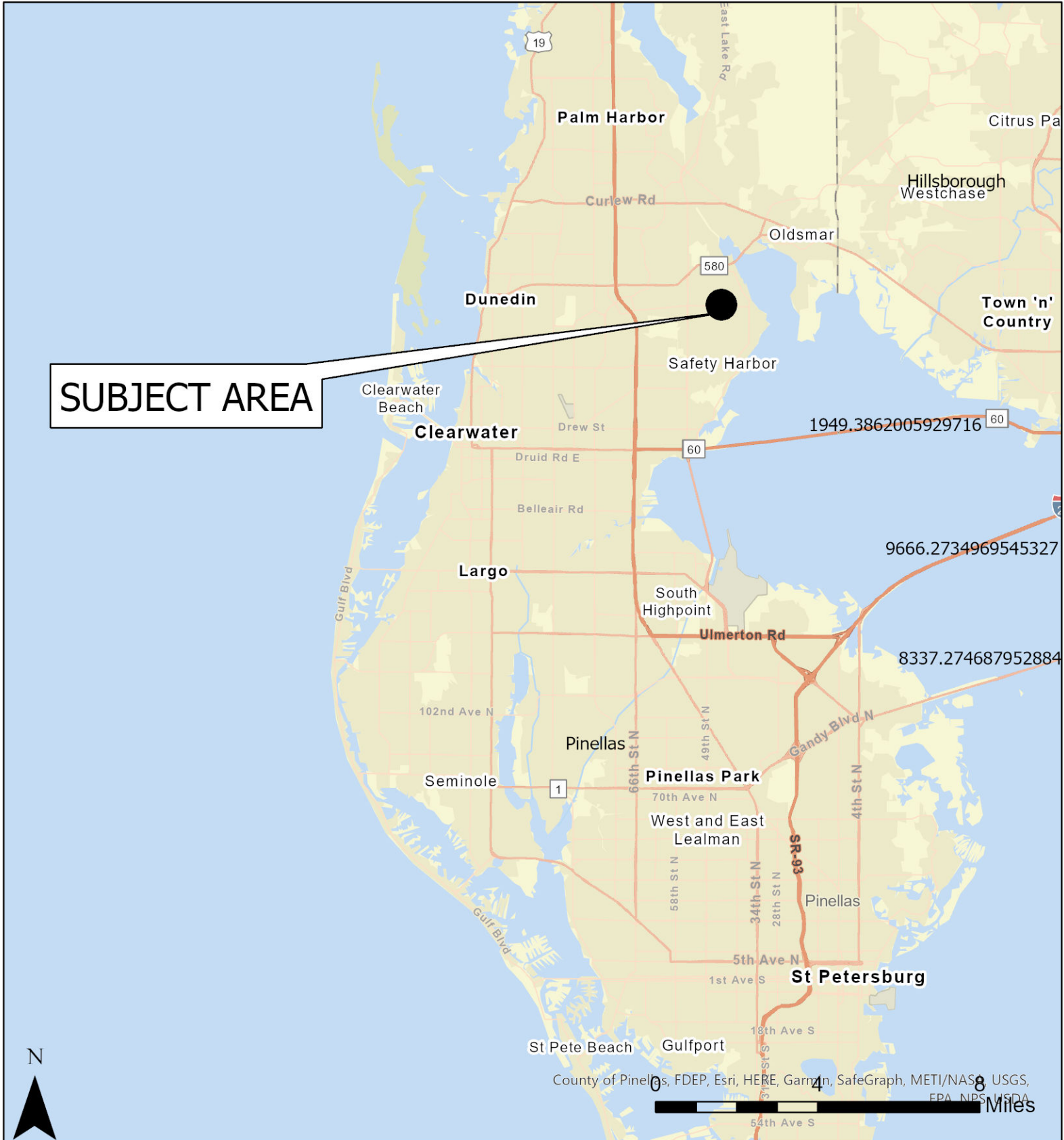


Case CW22-22

Map 1: Location Map

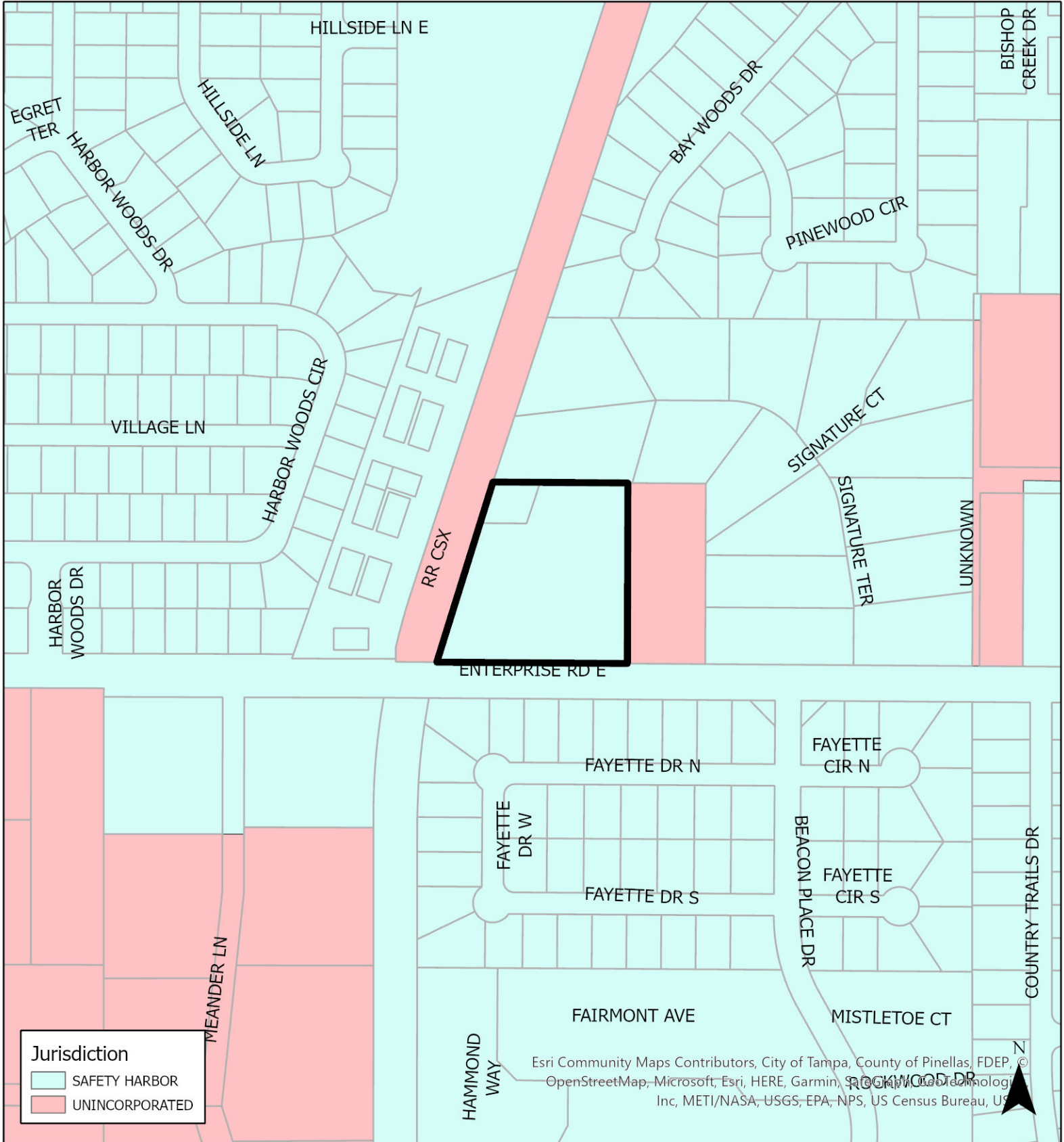


JURISDICTION: Safety Harbor
AREA: 3.6 acres m.o.i.

FROM: Residential Very Low
TO: Residential Low Medium

Case CW22-22

Map 2: Jurisdictional Map



JURISDICTION: Safety Harbor

FROM: Residential Very Low

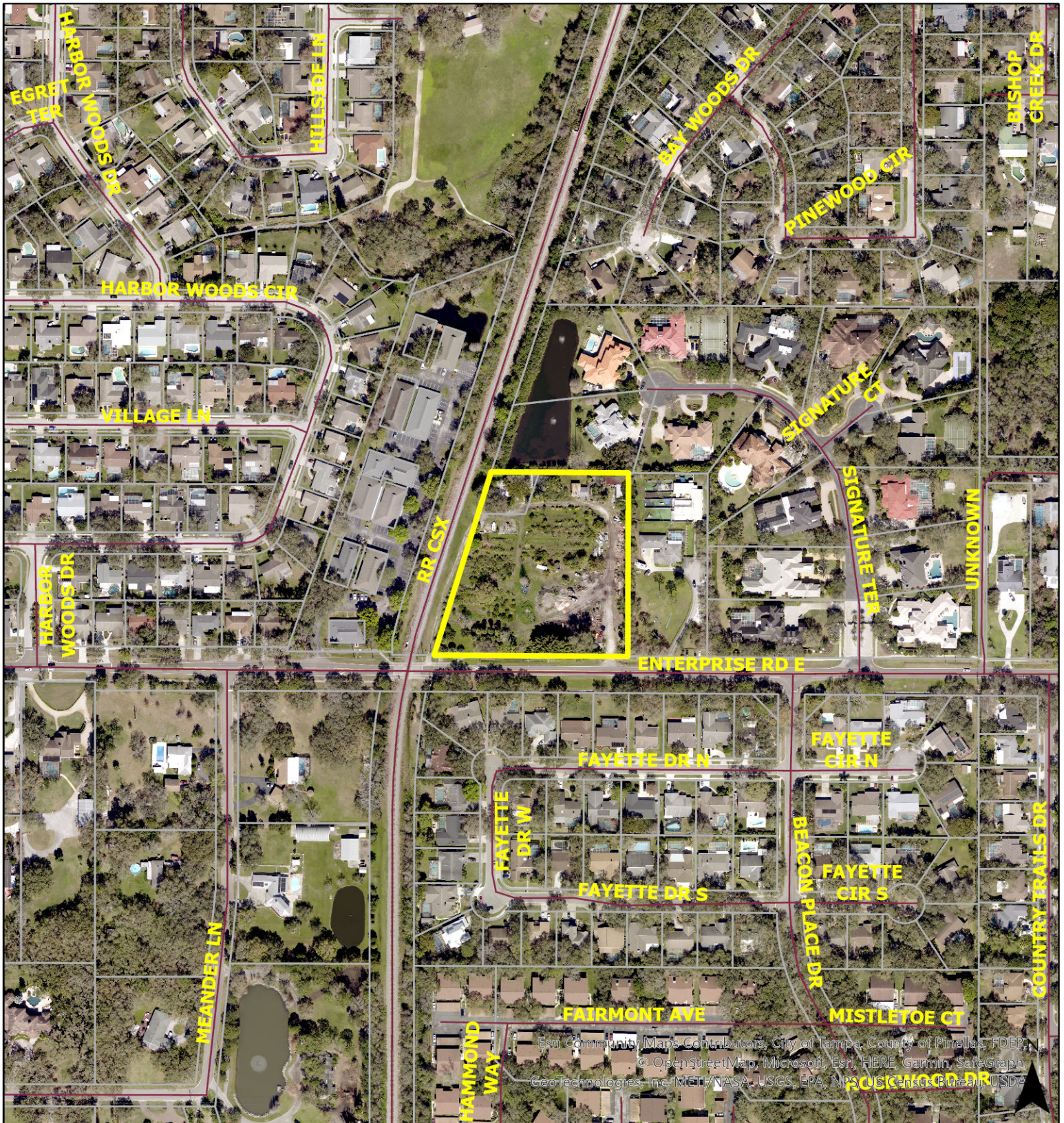


AREA: 3.6 acres

TO: Residential Low Medium

Case CW22-22

Map 3: Aerial Map



JURISDICTION: Safety Harbor

AREA: 3.6 acres

FROM: Residential Very Low

TO: Residential Low Medium

0 100 200 500
Feet

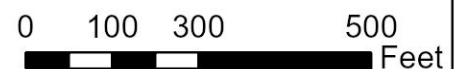




Esri Community Maps Contributors, City of Tampa, County of Pinellas, FDLP,
© OpenStreetMap, Microsoft, Esri, HERE, Garmin, SafeGraph,
GeoTechnologies, Inc, METI/NASA, USGS, EPA, NPS, US Census Bureau, etc.

JURISDICTION: Safety Harbor

FROM: Residential Very Low



AREA: 3.6 acres

TO: Residential Low Medium

Case CW22-22

Map 5: Proposed Countywide Plan Map

