

ITEM	DATE	BY	QC
REV	01-16-23	JT	DHP
SKETCH & DESCRIPTION	06-21-22	JC	DHR
H:\JN\4473\DWG\4473SD ROADS.DWG			

HERITAGE OAKS

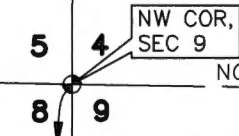
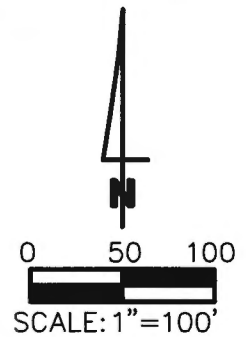


POLARIS ASSOCIATES INC.
 PROFESSIONAL SURVEYING LB 6113
 2165 SUNNYDALE BOULEVARD, SUITE D
 CLEARWATER, FLORIDA 33765
 (727) 461-6113

SECTION 9, TOWNSHIP 30S, RANGE 15E
 PINELLAS COUNTY, FLORIDA
 PROJECT NUMBER 4473-01

LEGEND

- BOC = BACK OF CURB
- COR = CORNER
- OR = OFFICIAL RECORDS BOOK
- PB = PLAT BOOK
- PG = PAGE
- POB = POINT OF BEGINNING
- POC = POINT OF COMMENCEMENT
- R/W = RIGHT-OF-WAY
- SEC = SECTION
- SR = STATE ROAD



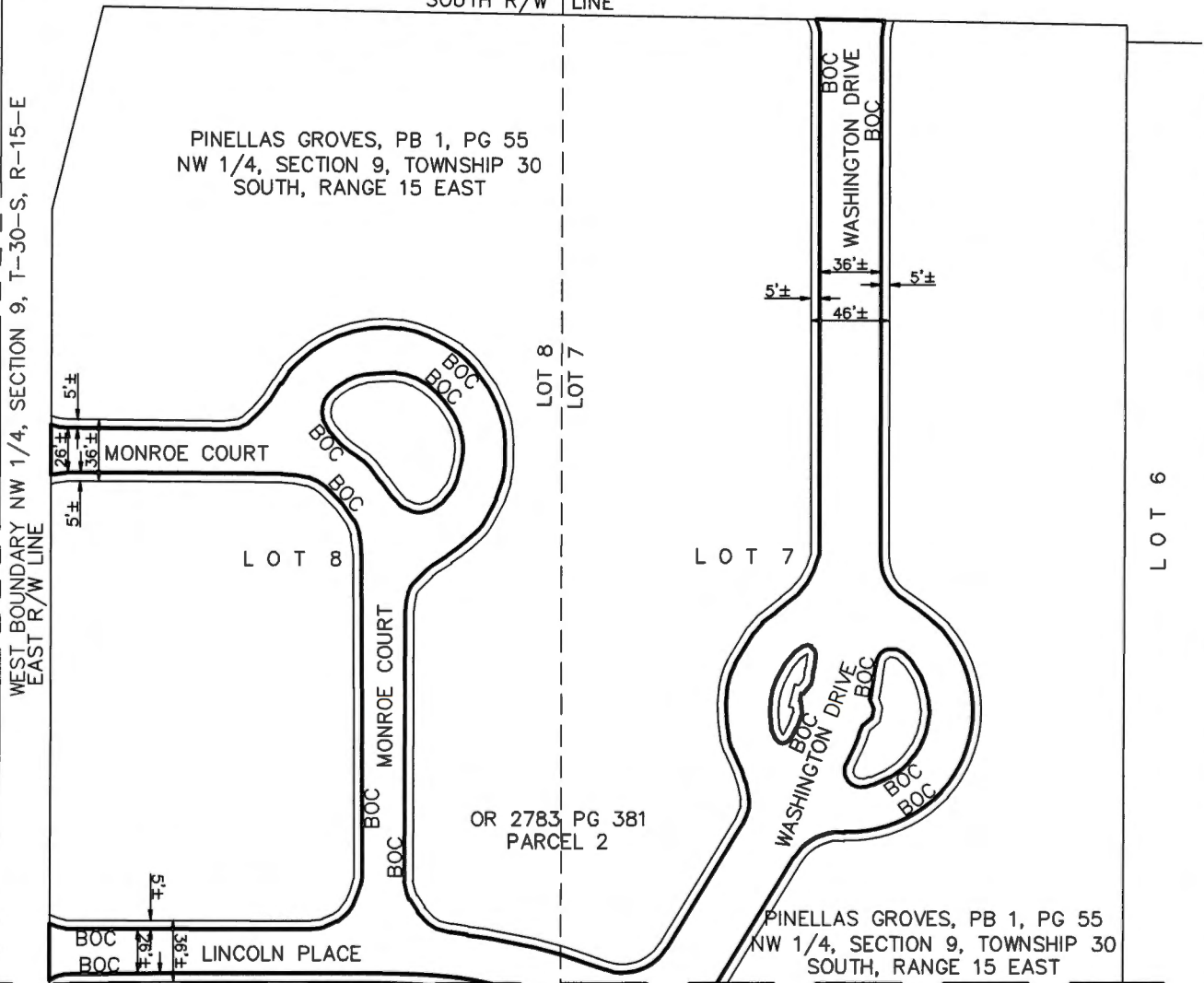
134TH AVENUE N

NORTH BOUNDARY NW 1/4, SECTION 9, T-30-S, R-15-E

SOUTH R/W LINE

PINELLAS GROVES, PB 1, PG 55
 NW 1/4, SECTION 9, TOWNSHIP 30
 SOUTH, RANGE 15 EAST

125TH STREET N
 (A.K.A. JACKSON STREET)
 500'10'52"W
 WEST BOUNDARY NW 1/4, SECTION 9, T-30-S, R-15-E
 EAST R/W LINE



OR 2783, PG 381
 PARCEL 2

PINELLAS GROVES, PB 1, PG 55
 NW 1/4, SECTION 9, TOWNSHIP 30
 SOUTH, RANGE 15 EAST

NOT A SURVEY

MATCH LINE - SHEET 1

SHEET 2 OF 3

ITEM	DATE	BY	QC
REV	01-16-23	JT	DHR
SKETCH & DESCRIPTION	06-21-22	JC	DHR
H: \JN\4473\DWG\4473SD ROADS.DWG			

HERITAGE OAKS



POLARIS ASSOCIATES INC.
 PROFESSIONAL SURVEYING LB 6113
 2165 SUNNYDALE BOULEVARD, SUITE D
 CLEARWATER, FLORIDA 33765
 (727) 461-6113

SECTION 9, TOWNSHIP 30S, RANGE 15E
 PINELLAS COUNTY, FLORIDA
 PROJECT NUMBER 4473-01

DESCRIPTION

ALL THAT PART OF MONROE COURT, WASHINGTON DRIVE, LINCOLN PLACE AND JEFFERSON CIRCLE LYING WITHIN LOTS 7, 8, 9 AND 10, PINELLAS GROVES SUBDIVISION, IN THE NORTHWEST 1/4 OF SECTION 9, TOWNSHIP 30 SOUTH, RANGE 15 EAST AS RECORDED IN PLAT BOOK 1, PAGE 55, OF THE PUBLIC RECORDS OF PINELLAS COUNTY, FLORIDA, AS RECORDED IN OFFICIAL RECORDS BOOK 4719, PAGE 1833 OF THE PUBLIC RECORDS OF PINELLAS COUNTY, FLORIDA.

CONTAINING 3.457 ACRES, MORE OR LESS.

NOTES

1. BEARINGS ARE BASED ON THE WEST BOUNDARY, OF THE NORTHWEST 1/4, SECTION 9, TOWNSHIP 30 SOUTH, RANGE 15 EAST, BEING ASSUMED AS S00°10'52"W.
2. LEGAL DESCRIPTION WAS PREPARED BY POLARIS ASSOCIATES, INC.
3. RE-USE OF THIS SKETCH FOR PURPOSES OTHER THAN WHICH IT WAS INTENDED, WITHOUT WRITTEN VERIFICATION, WILL BE AT THE RE-USERS SOLE RISK AND WITHOUT LIABILITY TO THE SURVEYOR. NOTHING HEREIN SHALL BE CONSTRUED TO GIVE ANY RIGHTS OR BENEFITS TO ANYONE OTHER THAN THOSE CERTIFIED TO.
4. THIS SKETCH IS NOT INTENDED TO SHOW THE LOCATION OR EXISTENCE OF ANY JURISDICTIONAL, HAZARDOUS OR ENVIRONMENTALLY SENSITIVE AREAS.
5. THIS SKETCH WAS PREPARED WITHOUT THE BENEFIT OF AN ABSTRACT OF TITLE AND MAY BE SUBJECT TO EASEMENTS, RESTRICTIONS, RIGHTS-OF-WAY AND OTHER MATTERS OF RECORD.

CERTIFICATION

I HEREBY CERTIFY THAT THE SKETCH REPRESENTED HEREON MEETS THE MINIMUM TECHNICAL STANDARDS SET FORTH BY THE FLORIDA BOARD OF PROFESSIONAL SURVEYORS AND MAPPERS IN CHAPTER 5J-17, FLORIDA ADMINISTRATIVE CODE, PURSUANT TO SECTION 472.027 FLC



ES Digitally signed by
 Dan Rizzuto
 Date: 2023.03.23
 13:58:52 -04'00'

DAN H. RIZZUTO
 PROFESSIONAL LAND SURVEYOR
 LS 5227, STATE OF FLORIDA

NOT A SURVEY

SHEET 3 OF 3

ITEM	DATE	BY	QC	HERITAGE OAKS	 POLARIS ASSOCIATES INC. PROFESSIONAL SURVEYING LB 6113 2165 SUNNYDALE BOULEVARD, SUITE D CLEARWATER, FLORIDA 33765 (727) 461-6113
REV	01-16-23	JT	DHR		
SKETCH & DESCRIPTION	06-21-22	JC	DHR		
H:\JN\4473\DWG\4473SD ROADS.DWG					