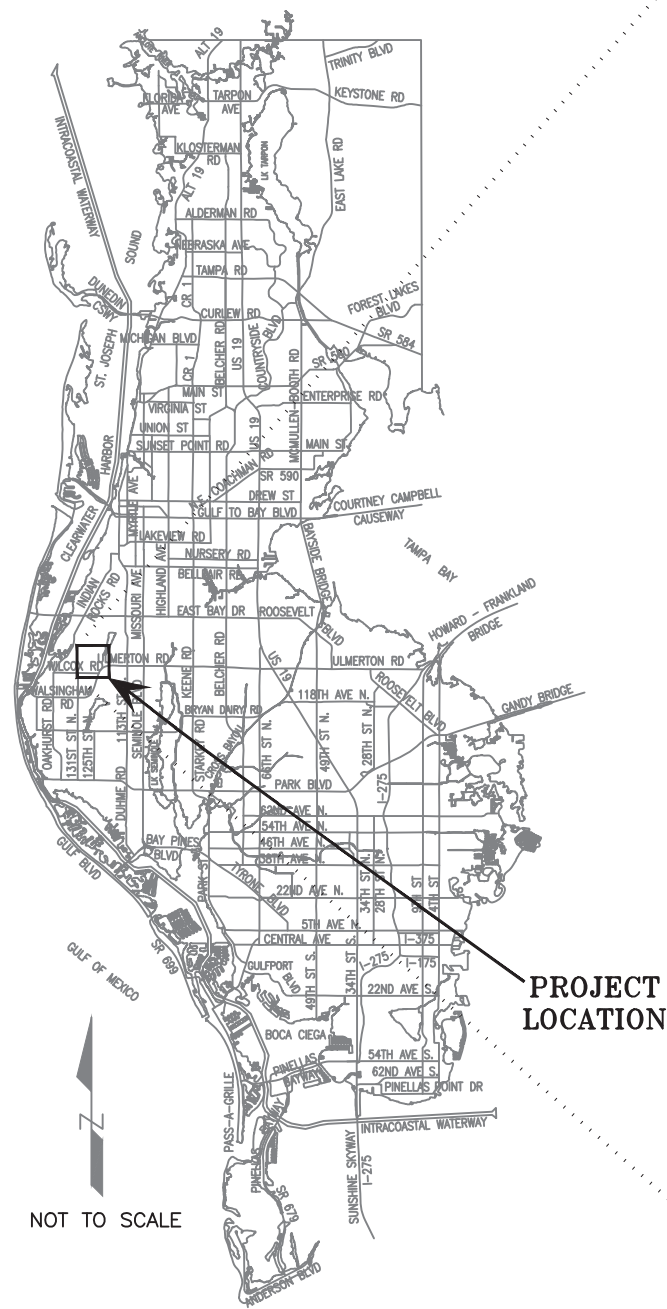


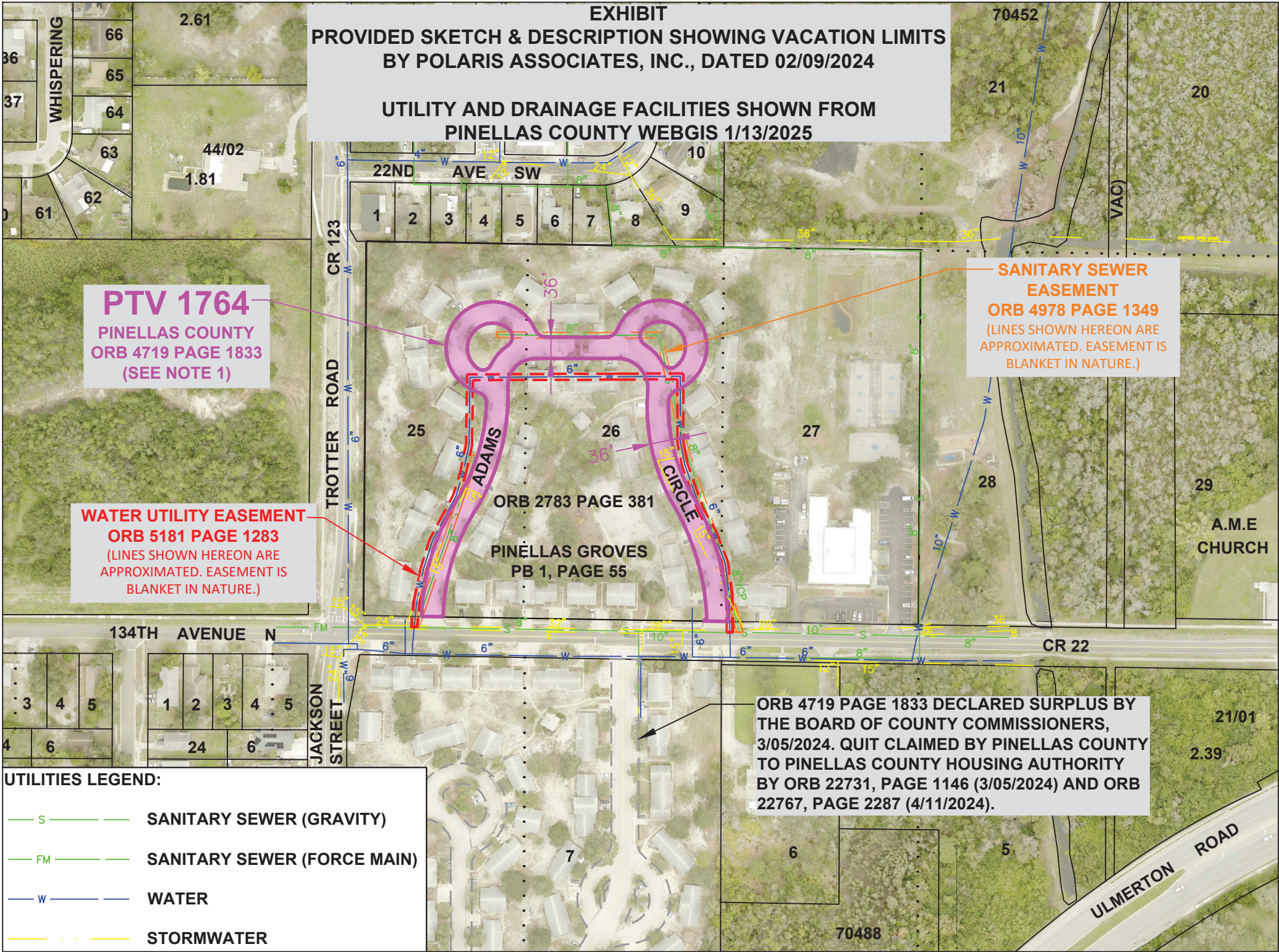
S:\Divisions\Survey\Survey\VACATION\_SF\0501\Case\_1764\DWG\00501\_01764\_Final\_Exhibit.dwg, Feb 13, 2025 - 12:59pm

PINELLAS COUNTY MAP



NOTE 1: ORB 4719 PAGE 1833 CONTAINS ADDITIONAL LANDS BEYOND THE LIMITS SHOWN HEREON. THOSE ADDITIONAL LANDS WERE DECLARED SURPLUS BY THE BOARD OF COUNTY COMMISSIONERS, 3/05/2024. AND WERE QUIT CLAIMED BY PINELLAS COUNTY TO PINELLAS COUNTY HOUSING AUTHORITY BY ORB 22731, PAGE 1146 (3/05/2024) AND ORB 22767, PAGE 2287 (4/11/2024).

SECTION(S) 04, TOWNSHIP 30 SOUTH, RANGE 15 EAST



UTILITIES LEGEND:	
	SANITARY SEWER (GRAVITY)
	SANITARY SEWER (FORCE MAIN)
	WATER
	STORMWATER

SCALE IN FEET 1"= 200'

SURVEY SECTION	BY	DATE
SURVEYED	.	.
TECHNICIAN	AZ	02/25
CHECKED	.	.
SURVEY BOOK NO(S): .		

PINELLAS COUNTY, FLORIDA PUBLIC WORKS
SURVEY AND MAPPING DIVISION 22211 U.S. HWY, 19 NORTH CLEARWATER, FLORIDA 33765-2328 PHONE (727) 464-8904



PTV 1764 ACCELA: PTV-24-00008 PINELLAS COUNTY HOUSING AUTHORITY HERITAGE OAKS - RAINBOW VILLAGE
--

EXHIBIT NOT A SURVEY	DATE: 02/13/2025
PID: 001851B	PHOTOGRAPHY DATE: 02/24
00501_01764_Final_Exhibit.dwg	SURVEY FILE NO.: 00501_01764
	SHEET: 01 of 01